

Available

Walmart
Realty

CBRE

Freestanding Retail

Junior Box Opportunity | 41,117 Sq. Ft.

7000 Iron Bridge Road | Richmond, VA 23234 | Store #3892



Property Overview

- + 41,117 Sq. Ft. on 5.67 Acres
- + Former Walmart Neighborhood Market built in 2015
- + Zoned C-3
- + Fueling station pad available for lease with anchor or separately
- + The ceiling height in the front part of the building is 15'11" and the ceiling height towards the rear of the building is 13'
- + Chesterfield is ranked #1 in population growth in the state of Virginia

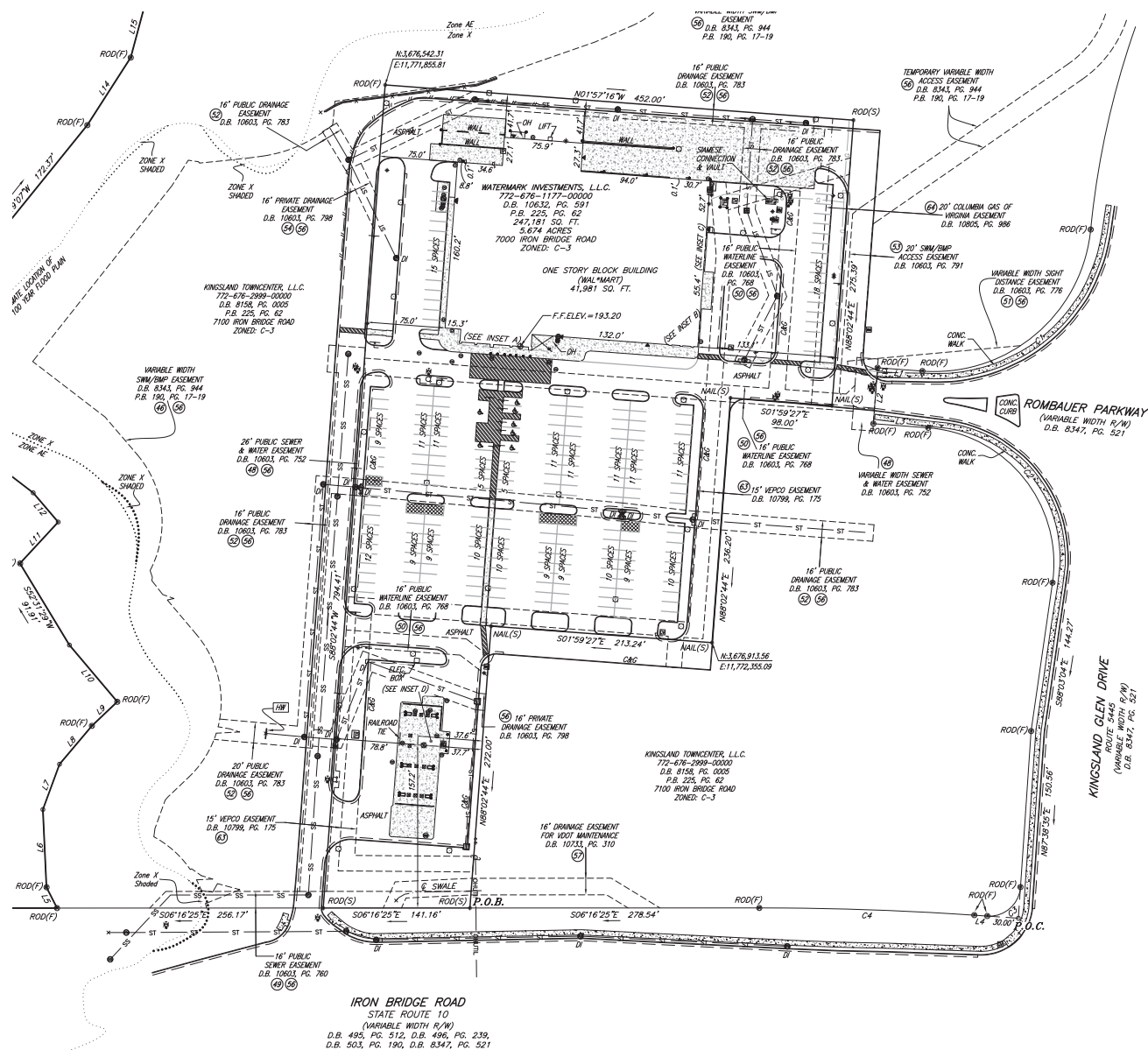
Freestanding Retail | 41,111 Sq. Ft.
7000 Iron Bridge Road | Richmond, VA 23234 | Store #3892

Available

Property Photos



Site Plan



Area Overview

About 20 minutes south of Downtown Richmond, the subject property is located in Chesterfield County. The area has strong population growth, attracting many Millennial and Gen Z workforce members. The Chesterfield County Airport is just south of the site which offers charter and private flight services.



Businesses (5 mi)
2,828



Employees (5 mi)
41,380



Major Employers

- U.S. Department of Defense
- Chesterfield County School District
- Amazon

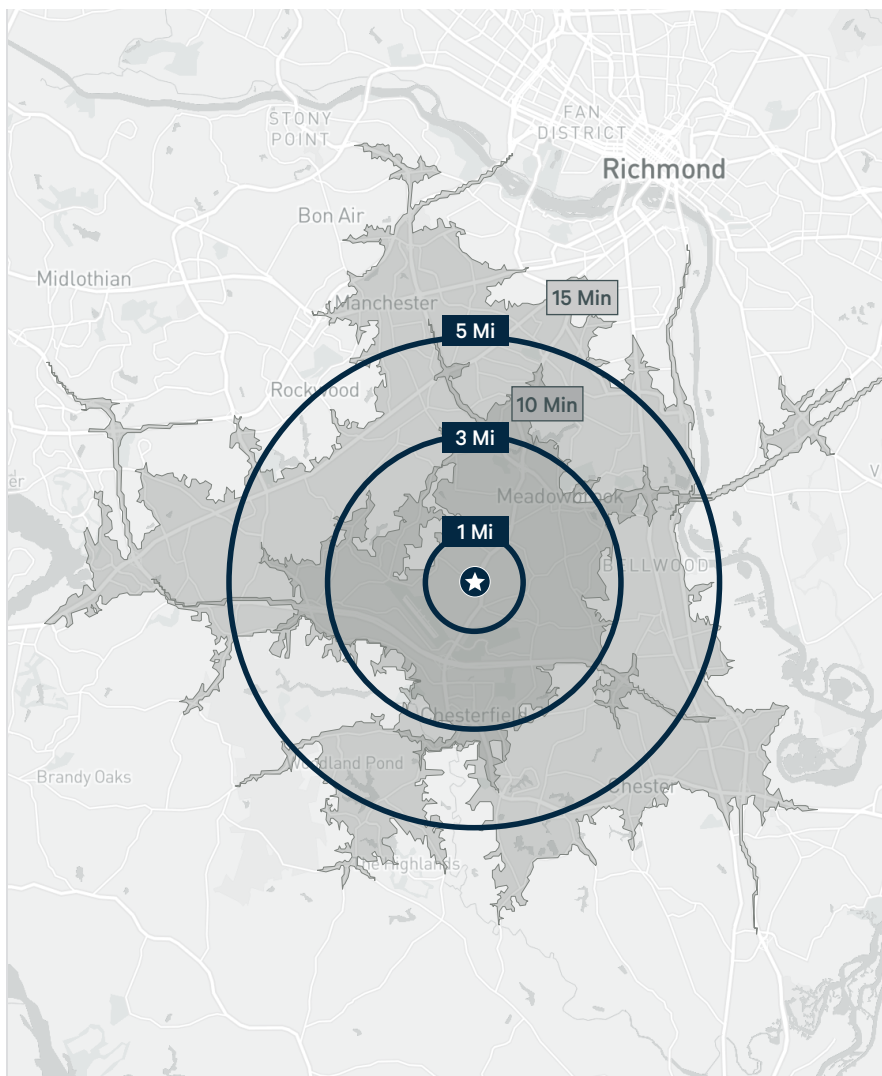


Hotels (5 mi)
16 / 695 Rooms



Area Traffic Generators

- Meadowdale Plaza
- Irongate Shopping Center
- Wawa



2025 Estimates	Total Population	Daytime Population	Total Households	Median HH Income	Median Age
1 Mile	6,623	4,266	2,413	\$94,685	39.2
3 Miles	53,776	51,697	19,152	\$88,113	38.3
5 Miles	133,464	115,290	49,819	\$80,405	38.4
5 Minutes	11,340	7,790	4,115	\$105,484	39.1
10 Minutes	86,401	66,954	31,869	\$86,727	37.7
15 Minutes	222,969	216,183	86,983	\$84,072	38.4

Freestanding Retail | 41,111 Sq. Ft.
7000 Iron Bridge Road | Richmond, VA 23234 | Store #3892

Available

Trade Area



Contact Us

Pam Strieffler
Vice President
+1 804 201 2026
pam.strieffler@cbre.com

Ian Webster
Senior Associate
+1 804 201 2014
ian.webster@cbre.com

CBRE, Inc. | Richmond
1802 Bayberry Court, Suite 201
Richmond, VA 23226
+1 804 401 4000
Licensed Real Estate Broker

© 2025 CBRE, Inc. All rights reserved. This information has been obtained from sources believed reliable but has not been verified for accuracy or completeness. CBRE, Inc. makes no guarantee, representation or warranty and accepts no responsibility or liability as to the accuracy, completeness, or reliability of the information contained herein. You should conduct a careful, independent investigation of the property and verify all information. Any reliance on this information is solely at your own risk. CBRE and the CBRE logo are service marks of CBRE, Inc. All other marks displayed on this document are the property of their respective owners, and the use of such marks does not imply any affiliation with or endorsement of CBRE. Photos herein are the property of their respective owners. Use of these images without the express written consent of the owner is prohibited.

www.cbre.com/walmart

Walmart
Realty

CBRE