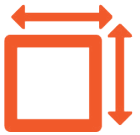
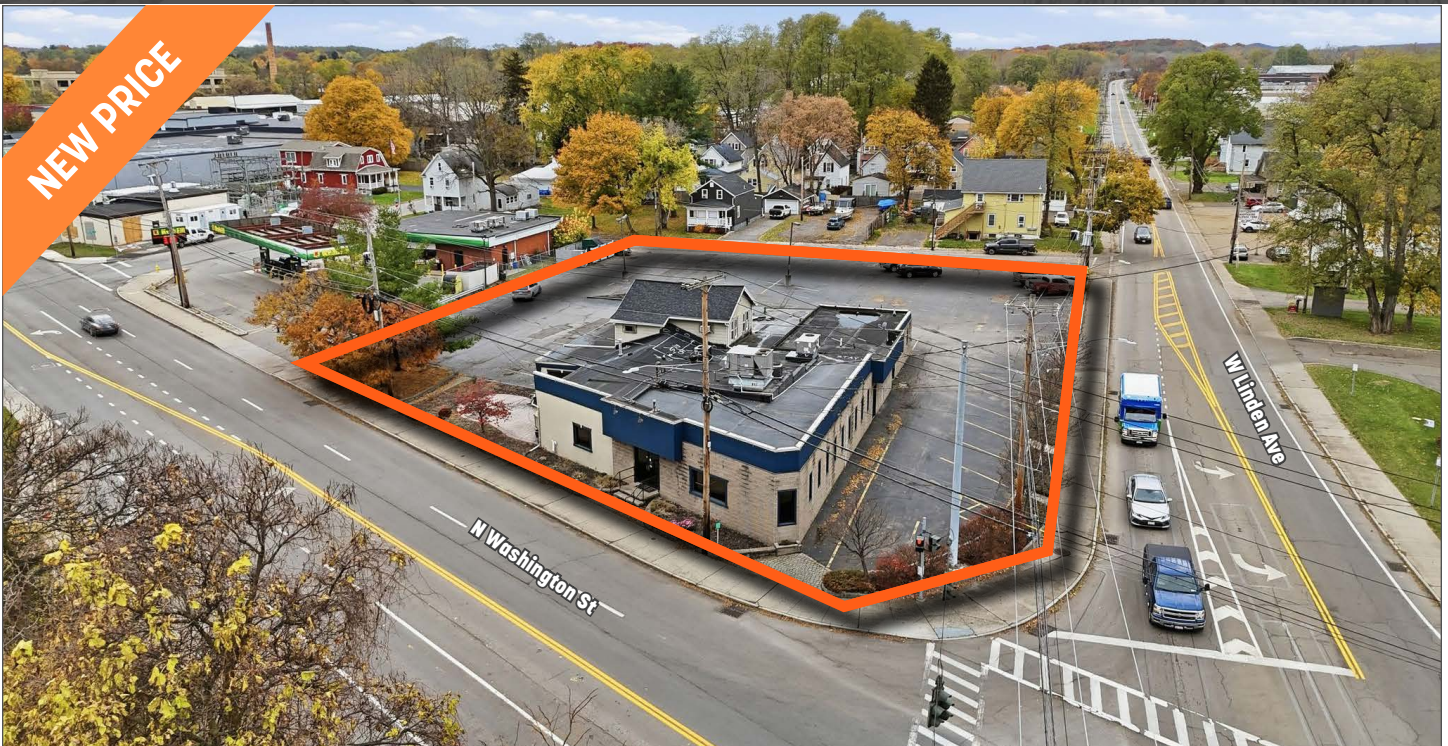


# FOR SALE

311 N WASHINGTON ST, EAST ROCHESTER, NY 14445



**5,797 ±**  
SF AVAILABLE



**18,193**  
VEHICLES PER DAY



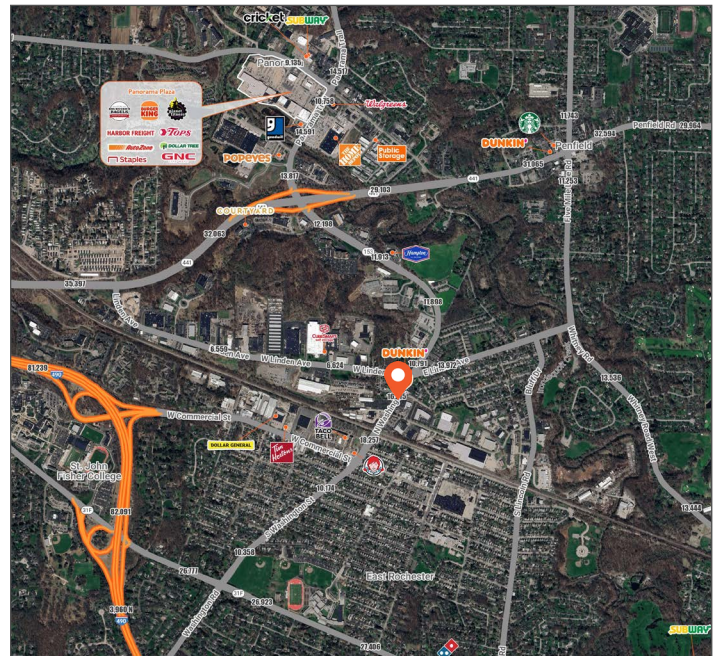
**\$599,000**  
LIST PRICE

## OFFERING SUMMARY

Property Type	Restaurant/Redevelopment
Building Size	5,797± SF
Lot Size:	0.86 ± Acres
Traffic Counts	N Washington St: 18,193/vpd W Linden Ave: 6,932/vpd
Parking	80 Spaces
List Price	\$599,000

## PROPERTY HIGHLIGHTS

- 5,797 ± SF freestanding building on 0.86 acres
- Strong potential for restaurant reuse or commercial redevelopment
- Prime corner location
- One-story building with 64' frontage and direct curb access
- Zoned for flexible commercial uses



DEMOGRAPHICS	1 Mile	3 Miles	5 Miles
Population	8,869	58,152	151,967
Median HH Income	\$73,990	\$98,354	\$105,427
Households	4,097	25,022	66,453
Employees	4,027	25,241	58,853

# FOR SALE

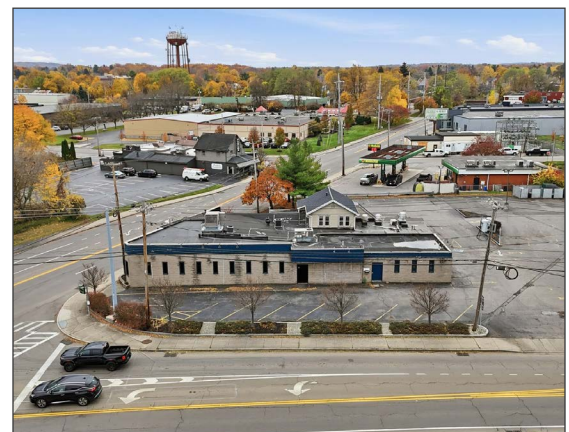
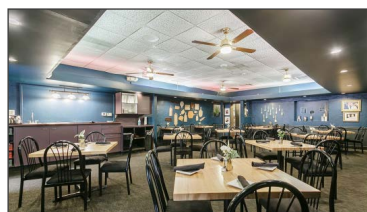
311 N WASHINGTON ST, EAST ROCHESTER, NY 14445

**Caliber**  
Commercial Brokerage



## PROPERTY HIGHLIGHTS

- Affluent trade area: \$98K+ median household income (3-mile radius)
- Minutes from Piano Works Mall, a mixed-use retail and office center with dining, fitness, and specialty shops
- Short drive to Pittsford Plaza, Wegmans, Marshalls, and Trader Joe's which enhance the area's regional retail draw
- Surrounding neighborhoods offer a mix of residential density and steady commercial traffic that support a wide range of retail and service uses



**Richard J. Altier, Partner**

Licensed Associate Real Estate Broker  
M: 585.233.3873 O: 585.454.4500 x 119  
raltier@caliberbrokerage.com

**Caliber Commercial Brokerage LLC**

394 E Henrietta Rd | Rochester, NY 14620  
caliberbrokerage.com  
585.454.4500