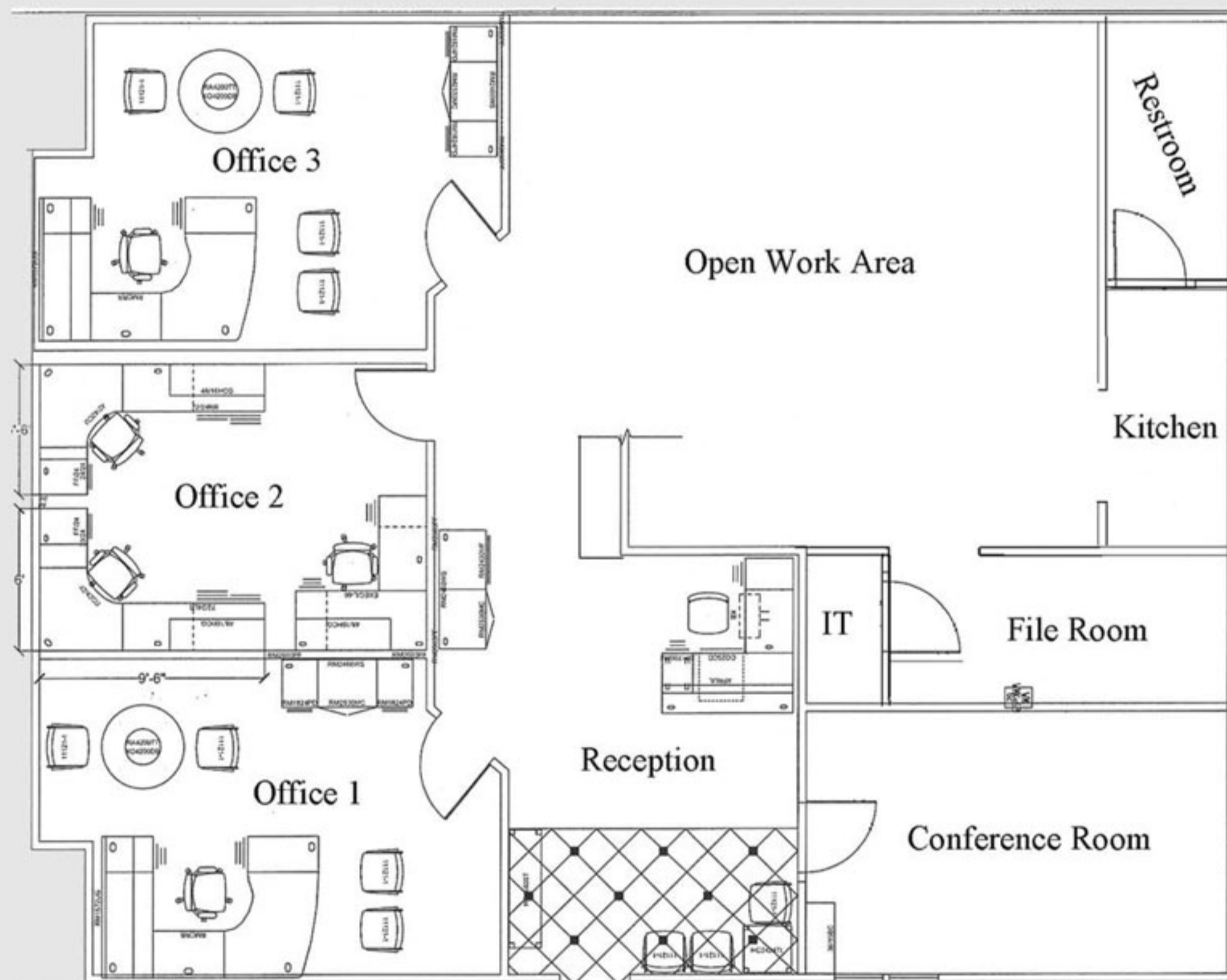




12460 ATLANTIC BLVD
CORAL SPRINGS, 3071

2,200 SQFT

LARGE OFFICE X3
CONFERENCE
RECEPTION/WAITING



WELL LAID OUT, OPEN AND BRIGHT FLOOR PLAN WITH 3 LARGE OFFICES. CONFERENCE ROOM. LARGE OPEN WORK AREA FOR STAFF. SEPARATE FILE ROOM/4TH OFFICE WITH VENTILATED IT. KITCHEN AREA AND RESTROOM. THE UNIT CAN INCLUDE THE CUBICLES IN THE MAIN WORK AREA. FLOOR PLAN ATTACHED.

JASON CHAMELY
954.857.1884
J.CHAMELY@BOXREALESTATE.NET

BOX REAL ESTATE LLC
1500 N UNIVERSITY DRIVE #243
CORAL SPRINGS, FL 33071