

EXECUTIVE SUMMARY



OFFERING SUMMARY

Lease Rate:	\$23.00 SF/yr (NNN)
Building Size:	2,222 SF
Available SF:	2,222 SF
Number of Units:	10
Market:	Oklahoma City

PROPERTY OVERVIEW

Located at the southeast corner of NW 6th Street and Robinson Ave, this property is on the northerly fringe of downtown with easy interstate access and private parking, across the street from the OKC National Memorial & Museum. Walking distance to downtown OKC, Automobile Alley, etc. Over 42 parking spaces.

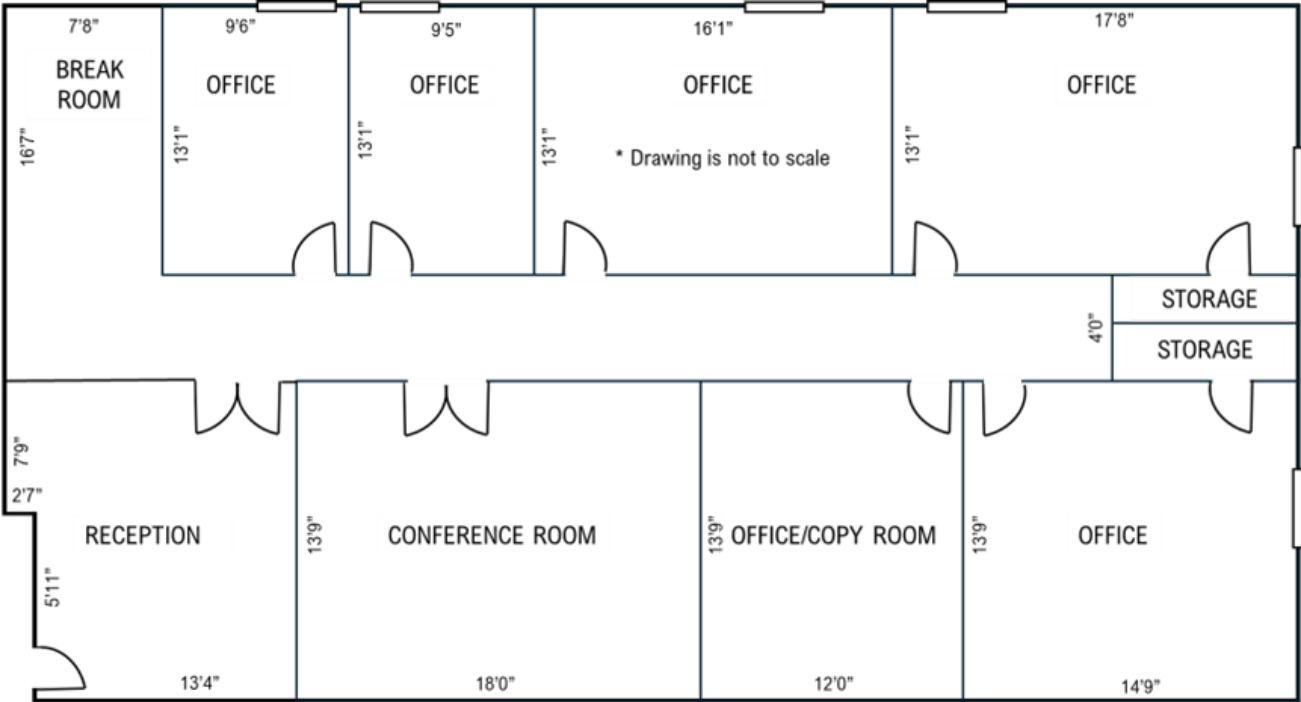
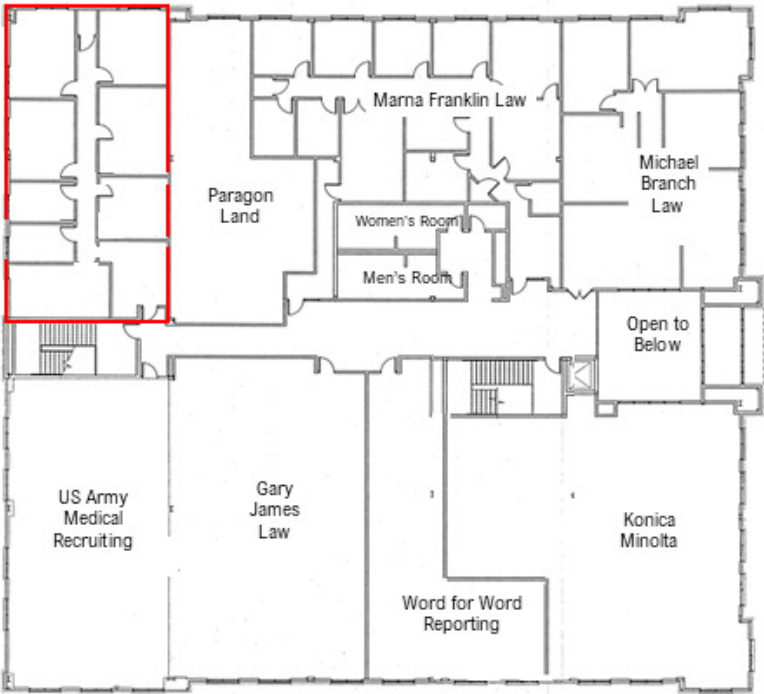
PROPERTY HIGHLIGHTS

- 2nd Floor suite, SE corner of building with windows, kitchenette, reception area, conference room and 5 standard size offices
- 10 ft high ceilings
- 42 private parking spaces for tenants and visitors
- 24/7 Locked building with audio/video security system to permit access
- Close proximity to dining and entertainment options
- Co-tenants include lawyers, court reporting, oil/gas businesses

TROY HUMPHREY

405.219.7500  
troy@creekcre.com

FLOOR PLAN



TROY HUMPHREY  
405.219.7500  
troy@creekcre.com

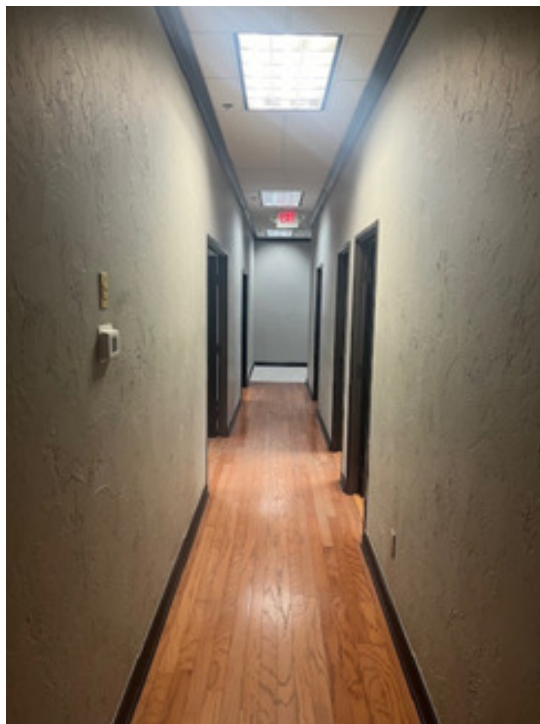
## PHOTOS



TROY HUMPHREY  
405.219.7500  
troy@creekcre.com



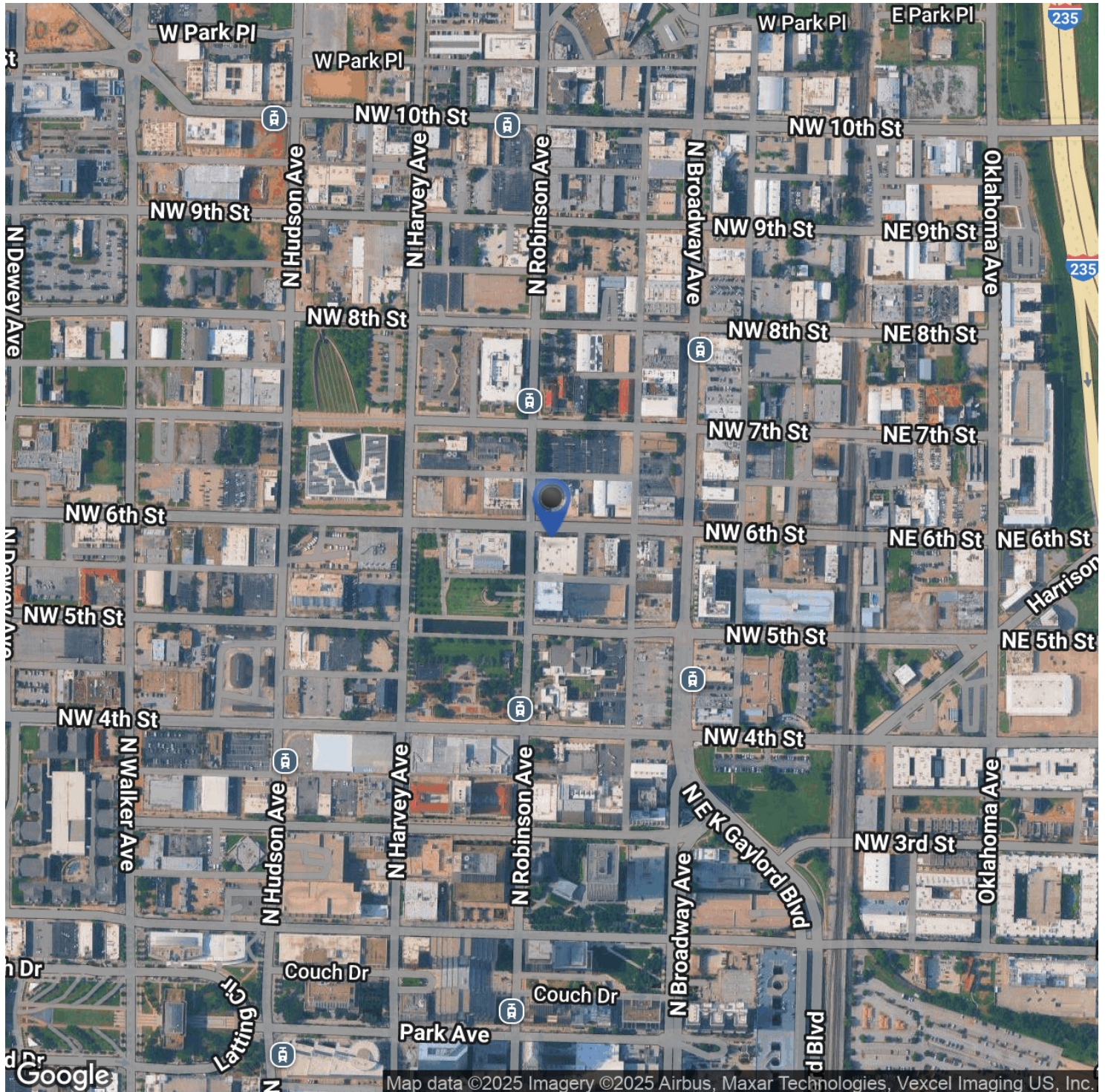
## PHOTOS



TROY HUMPHREY  
405.219.7500  
troy@creekcre.com



## LOCATION MAP



TROY HUMPHREY

405.219.7500  
troy@creekcre.com