

# 1720 E. HUNDRED RD, #102

Chester, Virginia

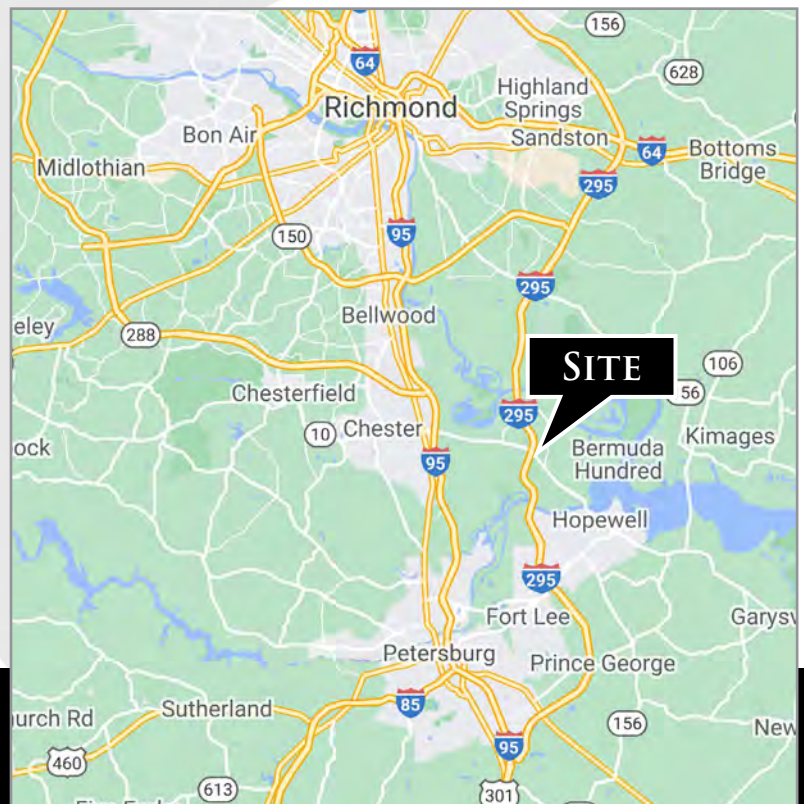
FOR LEASE



## MEADOWVILLE OFFICE/MEDICAL CONDO AVAILABLE FOR LEASE

### PROPERTY HIGHLIGHTS:

- ▶ 2,323 SF fully built out office/medical space
- ▶ Excellent location on Route 10 just off I-295 near River's Bend
- ▶ Close proximity HCA Tri-Cities Hospital and Meadowville Technology Park (Lego Group/Amazon).
- ▶ Comprised of 7 offices/exam rooms, waiting & reception, storage, restrooms, x-ray room/triage (large office).
- ▶ Lease Price: \$20 PSF, \$2.00 CAM, plus utilities



**Nathan S. Jones, IV**  
nathan@domcre.com  
855.530.2300

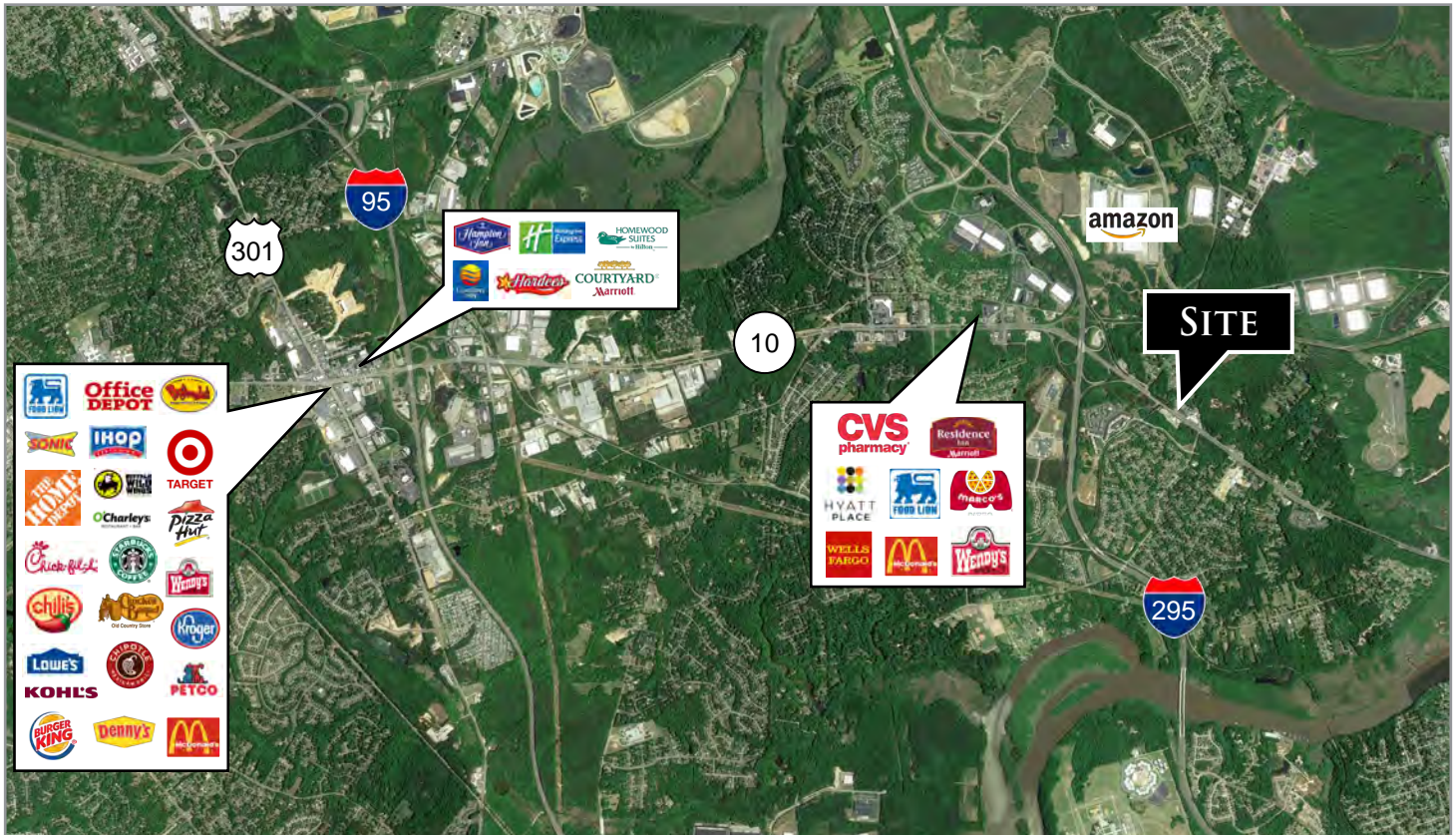
**Kevin Winfree**  
kevin@domcre.com  
855.530.2300

[domcre.com](http://domcre.com)

# 1720 E. HUNDRED RD, #102

FOR LEASE

Chester, Virginia



Nathan S. Jones, IV  
nathan@domcre.com  
855.530.2300

Kevin Winfree  
kevin@domcre.com  
855.530.2300

domcre.com

# 1720 E. HUNDRED RD, #102

Chester, Virginia

FOR LEASE



**Nathan S. Jones, IV**  
nathan@domcre.com  
855.530.2300

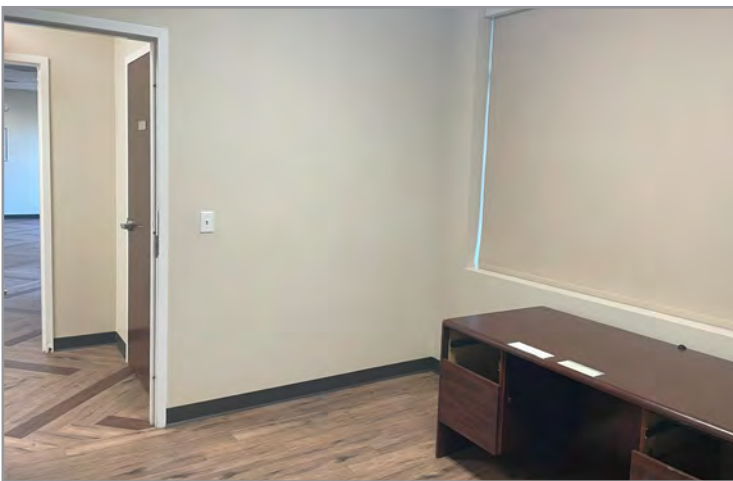
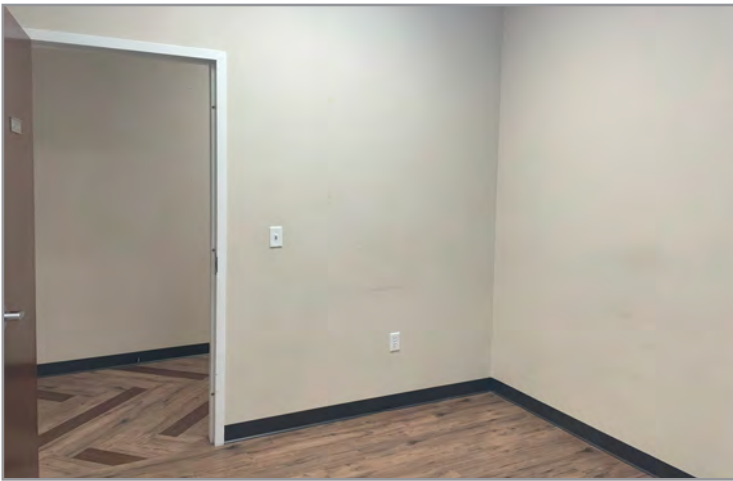
**Kevin Winfree**  
kevin@domcre.com  
855.530.2300

[domcre.com](http://domcre.com)

# 1720 E. HUNDRED RD, #102

Chester, Virginia

FOR LEASE



**Nathan S. Jones, IV**  
nathan@domcre.com  
855.530.2300

**Kevin Winfree**  
kevin@domcre.com  
855.530.2300

[domcre.com](http://domcre.com)

# 1720 E. HUNDRED RD, #102

Chester, Virginia

FOR LEASE



**Nathan S. Jones, IV**  
nathan@domcre.com  
855.530.2300

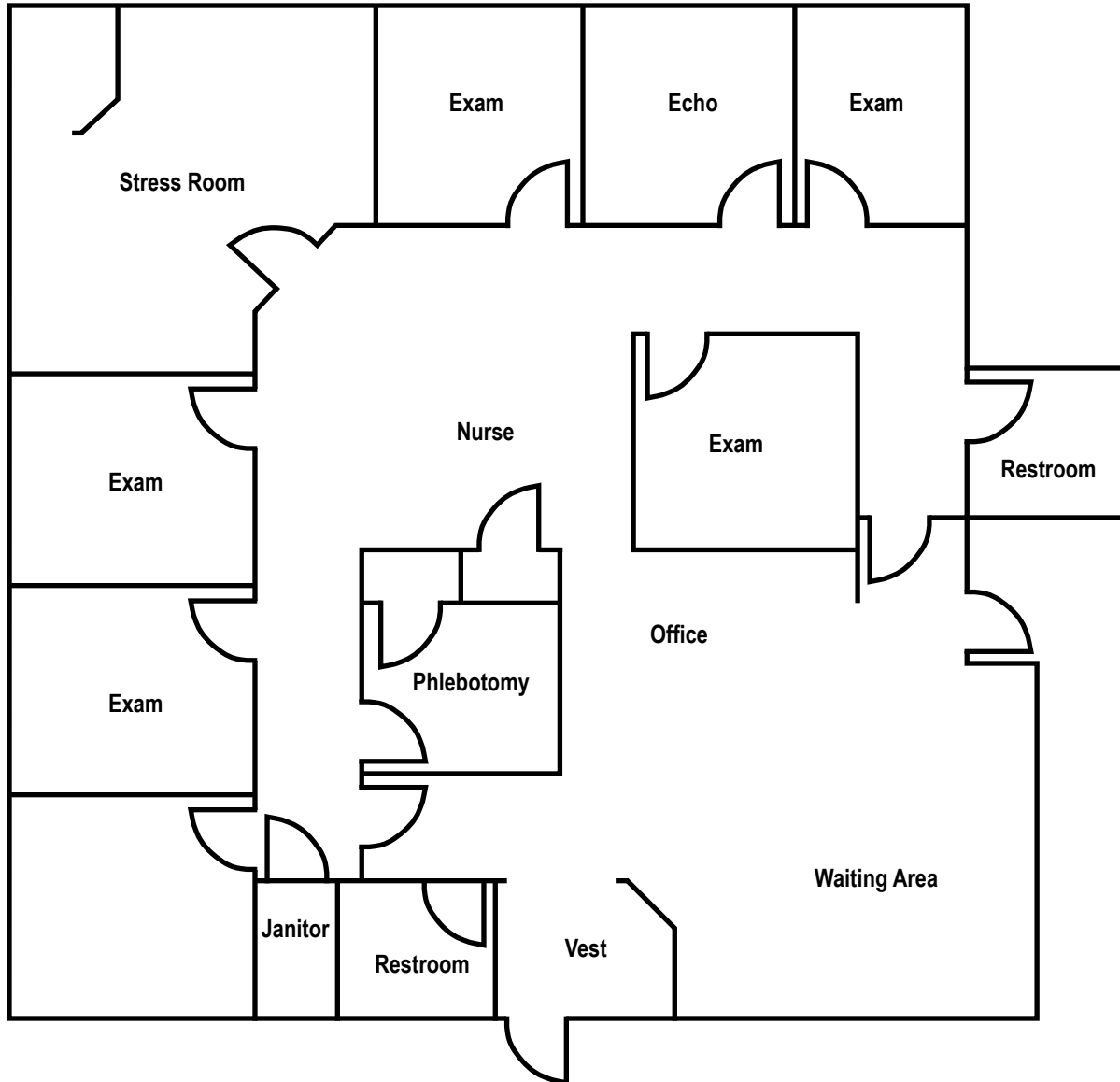
**Kevin Winfree**  
kevin@domcre.com  
855.530.2300

[domcre.com](http://domcre.com)

# 1720 E. HUNDRED RD, #102

Chester, Virginia

FOR LEASE



## SUITE 102



**Nathan S. Jones, IV**  
nathan@domcre.com  
855.530.2300

**Kevin Winfree**  
kevin@domcre.com  
855.530.2300

[domcre.com](http://domcre.com)