

OFFICE FOR LEASE

9800 S LA CIENEGA BOULEVARD, INGLEWOOD



LEASING CONTACTS

GEOFF LUDWIG

Executive Managing Director
+1 310 491 2077
geoff.ludwig@ngkf.com
CA RE Lic. #01232244

ERIC LASTITION

Executive Managing Director
+1 310 491 2047
eric.lastition@ngkf.com
CA RE Lic. #01119647

NEWMARK KNIGHT FRANK

2301 Rosecrance Avenue
Suite 4100
El Segundo, CA 90245
www.ngkf.com

FREEWAY ADJACENT OFFICE SPACE

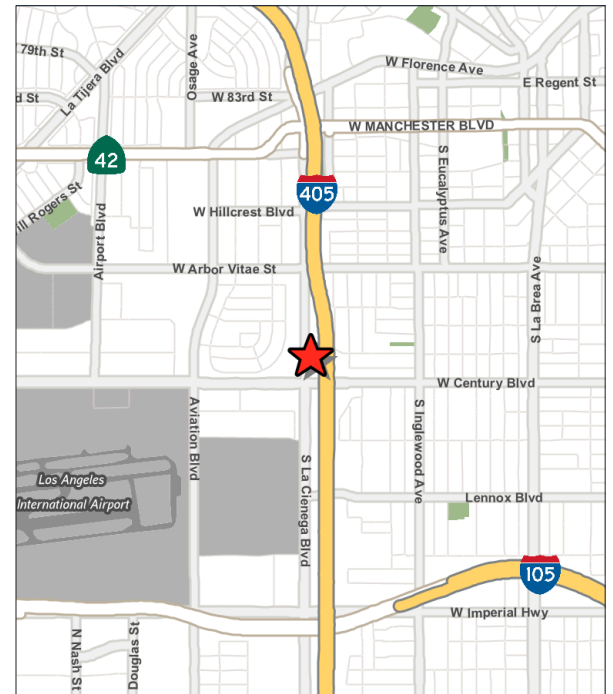
- Outstanding leasing value in a wide variety of efficient suite sizes
- 15-story office building with large blocks of contiguous space available
- 3/1,000 parking in adjacent 8-story structure
- On-site property management and responsive engineering
- 24-hour security desk, 7 days per week
- Common conference facility available for tenant use
- Excellent public transportation options
- Immediate access to the 405/105 freeway interchange
- Convenient shuttle service to Los Angeles International Airport

OFFICE FOR LEASE

9800 S LA CIENEGA BOULEVARD, INGLEWOOD

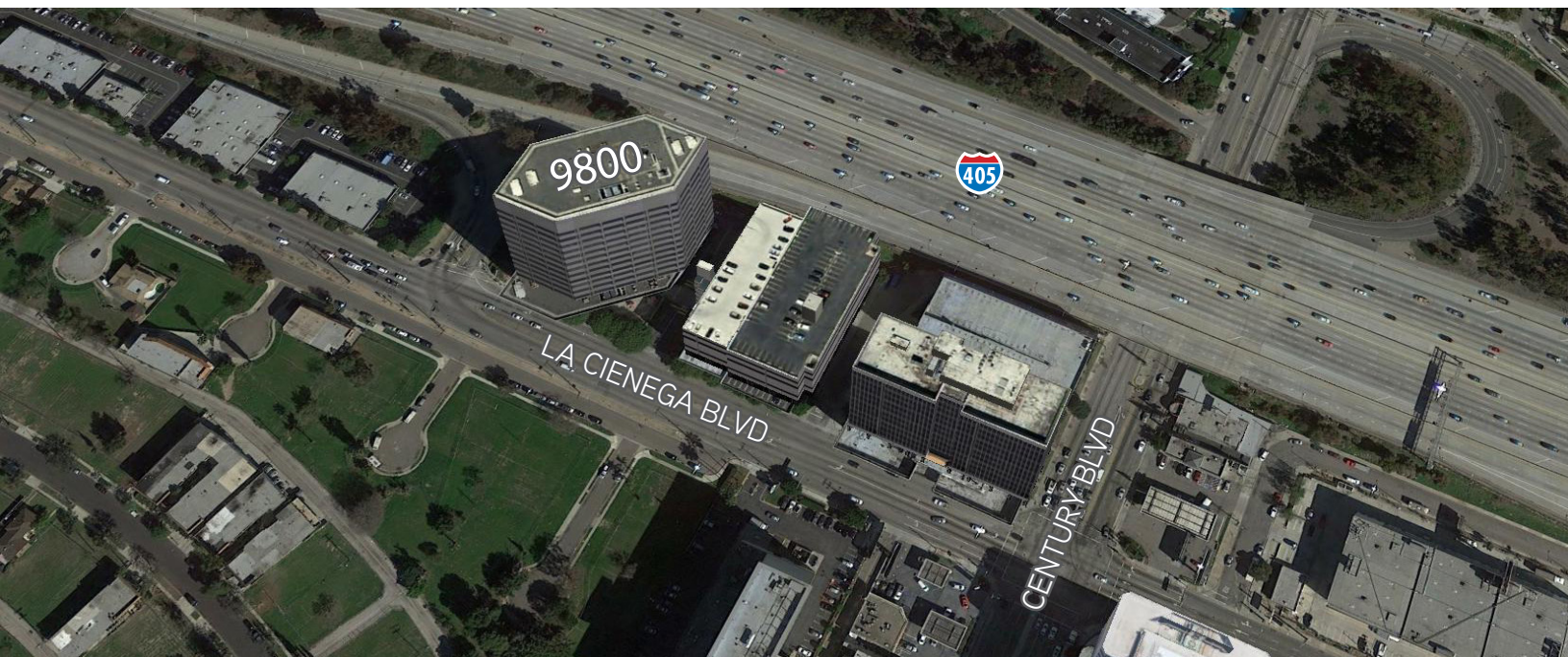
LEASE AVAILABILITY

■ Suite 100	::	6,385 SF	■ Suite 415	::	8,098 SF
■ Suite 107	::	1,793 SF	■ Suite 420	::	2,260 SF
■ Suite 110	::	1,432 SF	■ Contiguous	::	10,358 SF
■ Suite 112	::	4,181 SF	■ Suite 430	::	3,513 SF
■ Contiguous	::	5,613 SF	■ Suite 500	::	27,872 SF
■ Suite 115	::	1,898 SF	■ Suite 600	::	27,822 SF
■ Suite 210	::	8,617 SF	■ Suite 700	::	27,820 SF
■ Suite 300	::	2,678 SF	■ Suite 830	::	9,346 SF
■ Suite 301	::	1,080 SF	■ Suite 904	::	5,102 SF
■ Suite 305-309	::	1,422 SF	■ Suite 907	::	1,456 SF
■ Suite 310	::	1,290 SF	■ Suite 1400	::	27,659 SF
■ Suite 320	::	10,767 SF			
■ Suite 330	::	9,615 SF			
■ Suite 380	::	1,022 SF			
■ Contiguous	::	27,874 SF			



LEASE RATE :: \$2.00-\$2.10 per RSF, Full Service Gross

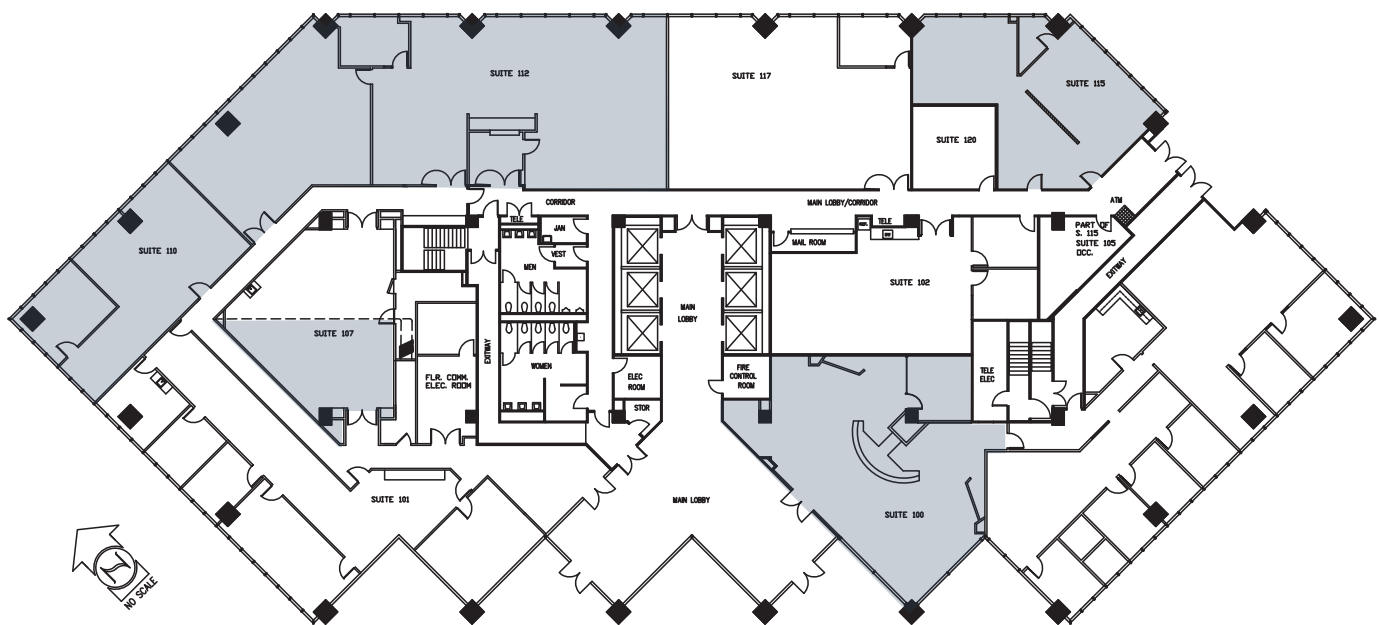
PARKING RATE :: \$90.00 Covered; \$190.00 Covered Tandem; \$170.00 Reserved



OFFICE FOR LEASE

9800 S LA CIENEGA BOULEVARD, INGLEWOOD

LEASE AVAILABILITY



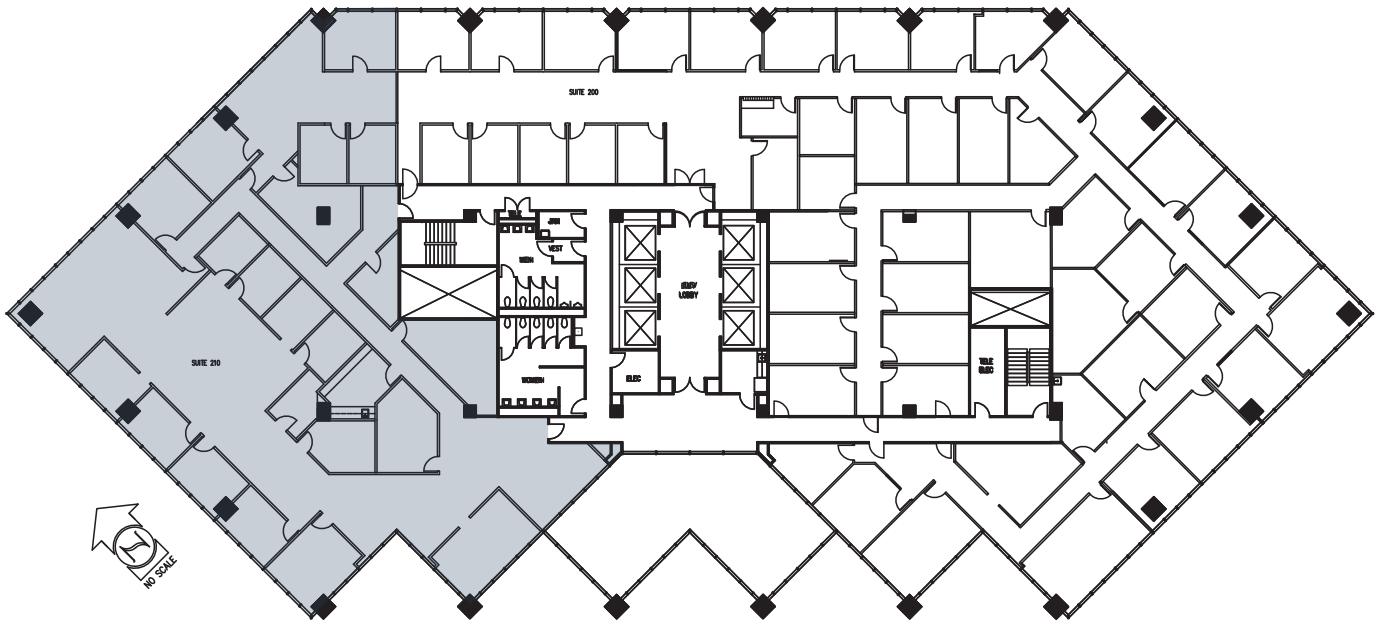
FLOOR 1: 9800 LA CIENEGA

- Suite 100 :: 6,385 SF
- Suite 107 :: 1,793 SF
- *Suite 110* :: *1,432 SF*
- Suite 112 :: 4,181 SF
- *Contiguous* :: *5,613 SF*
- Suite 115 :: 1,898 SF

OFFICE FOR LEASE

9800 S LA CIENEGA BOULEVARD, INGLEWOOD

LEASE AVAILABILITY



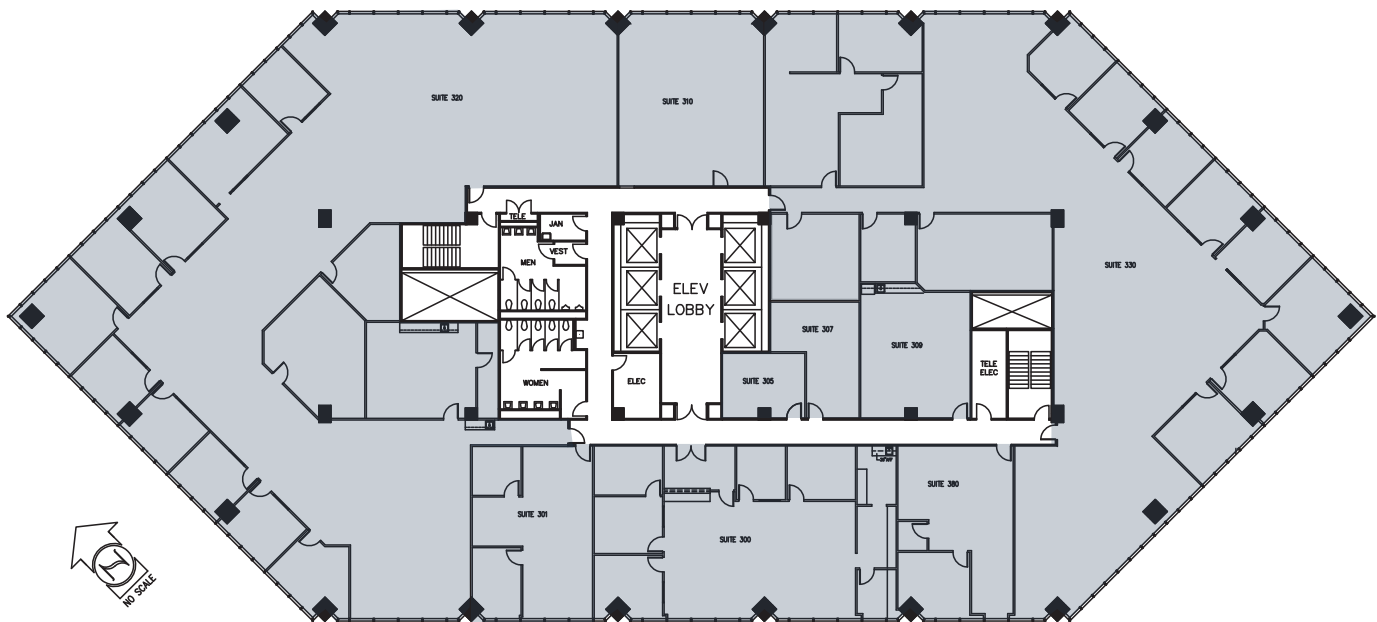
FLOOR 2: 9800 LA CIENEGA

- Suite 210 :: 8,617 SF

OFFICE FOR LEASE

9800 S LA CIENEGA BOULEVARD, INGLEWOOD

LEASE AVAILABILITY



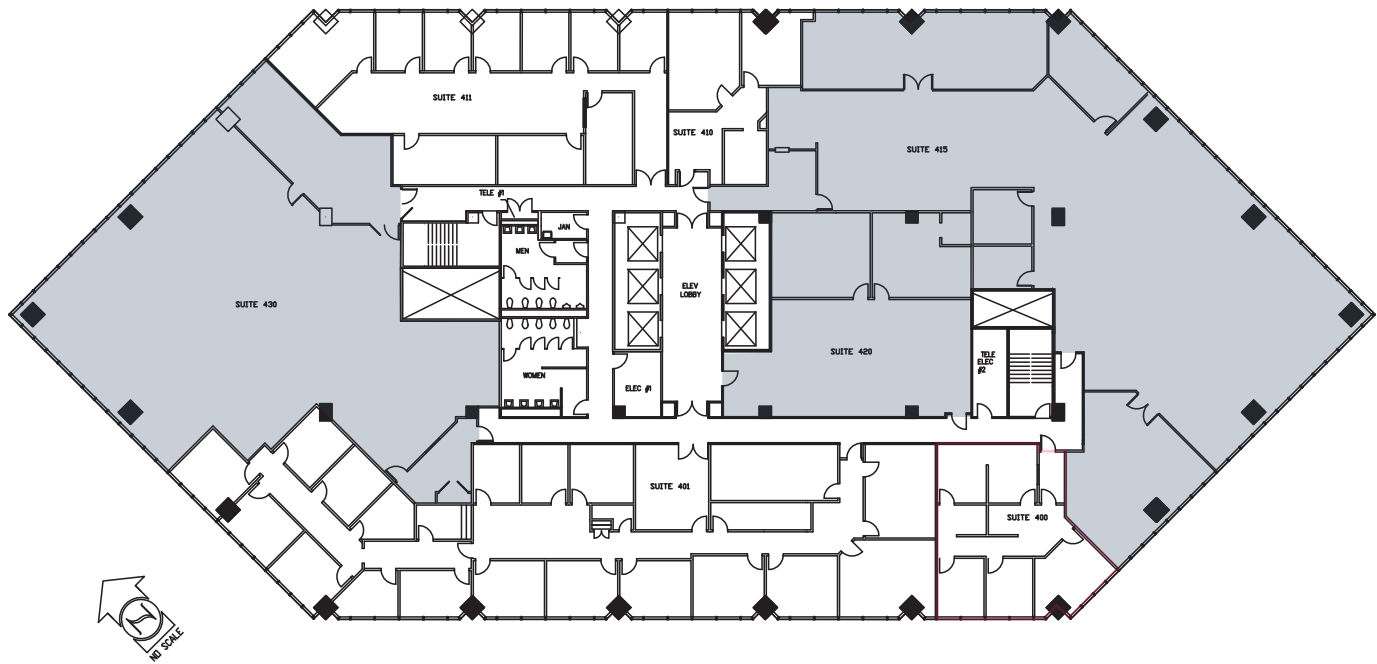
FLOOR 3: 9800 LA CIENEGA

- Suite 300 :: 2,678 SF
 - Suite 301 :: 1,080 SF
 - Suite 305 :: 275 SF
 - Suite 307 :: 413 SF
 - Suite 309 :: 734 SF
 - Suite 310 :: 1,290 SF
 - Suite 320 :: 10,767 SF
 - Suite 330 :: 9,615 SF
 - Suite 380 :: 1,022 SF
- Contiguous* :: 27,874 SF

OFFICE FOR LEASE

9800 S LA CIENEGA BOULEVARD, INGLEWOOD

LEASE AVAILABILITY



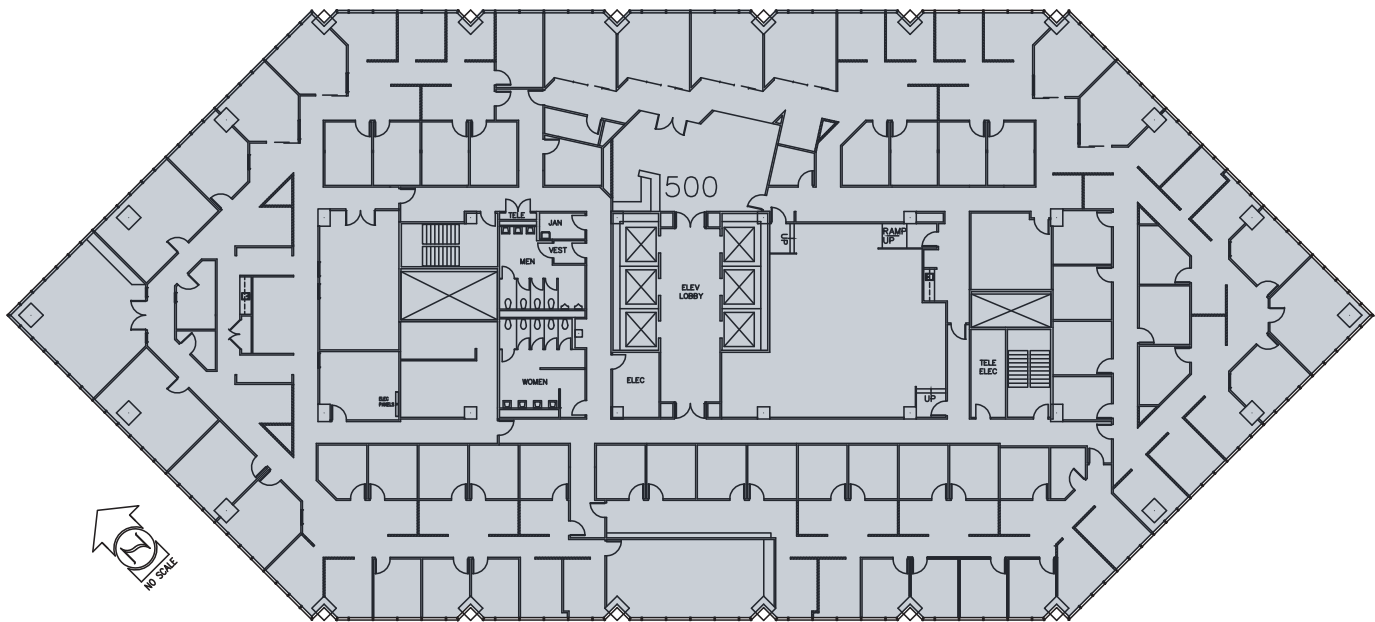
FLOOR 4: 9800 LA CIENEGA

- Suite 415 :: 8,098 SF
- Suite 420 :: 2,260 SF
- Contiguous :: 10,358 SF
- Suite 430 :: 3,513 SF

OFFICE FOR LEASE

9800 S LA CIENEGA BOULEVARD, INGLEWOOD

LEASE AVAILABILITY



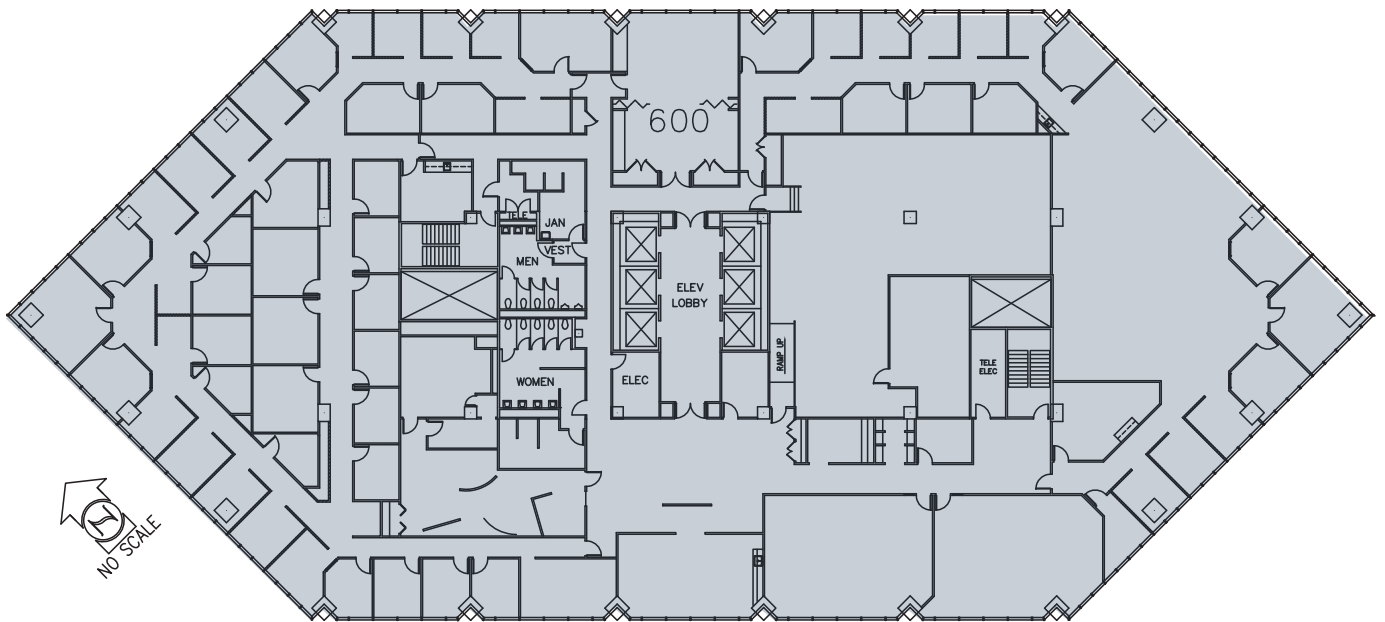
FLOOR 5: 9800 LA CIENEGA

- Suite 500 :: 27,872 SF

OFFICE FOR LEASE

9800 S LA CIENEGA BOULEVARD, INGLEWOOD

LEASE AVAILABILITY



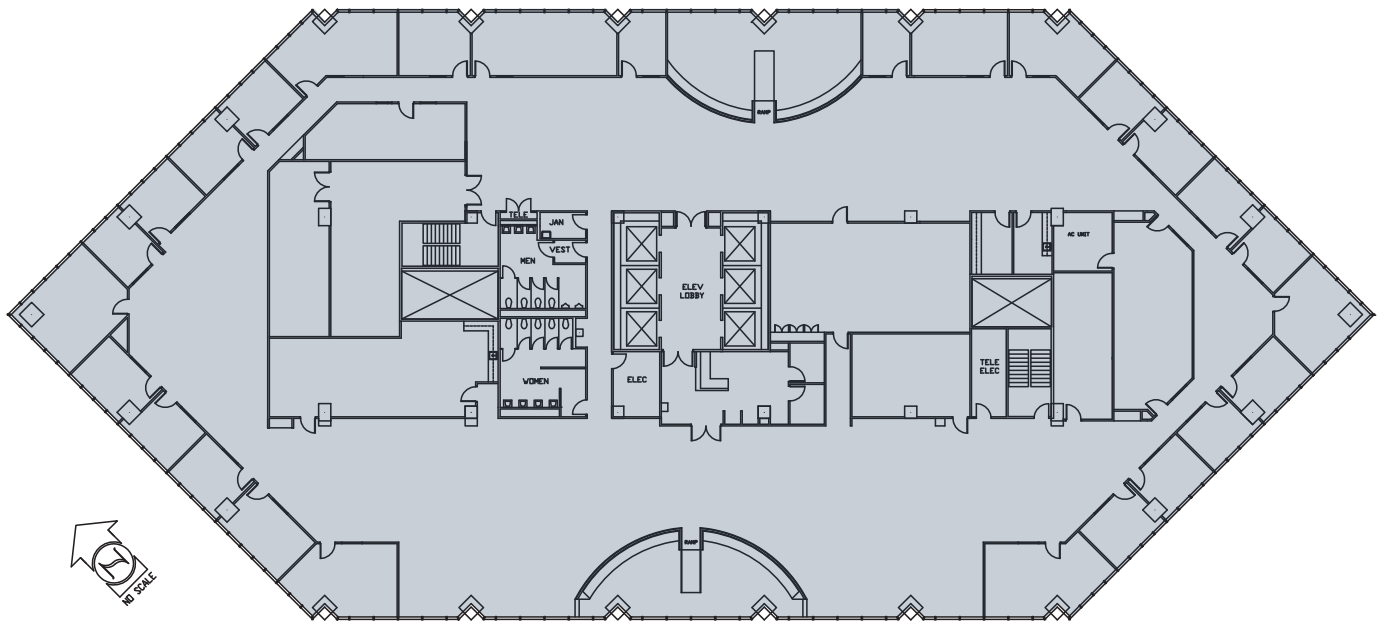
FLOOR 6: 9800 LA CIENEGA

- Suite 600 :: 27,822 SF

OFFICE FOR LEASE

9800 S LA CIENEGA BOULEVARD, INGLEWOOD

LEASE AVAILABILITY



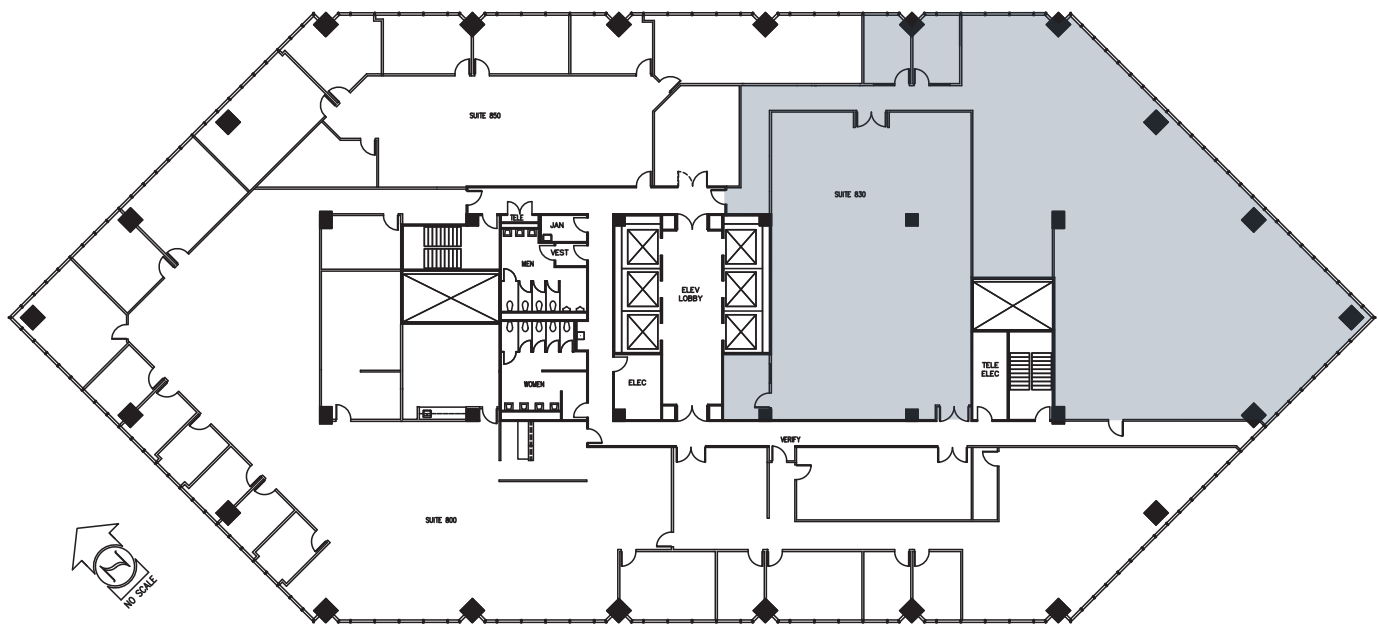
FLOOR 7: 9800 LA CIENEGA

- Suite 700 :: 27,820 SF

OFFICE FOR LEASE

9800 S LA CIENEGA BOULEVARD, INGLEWOOD

LEASE AVAILABILITY



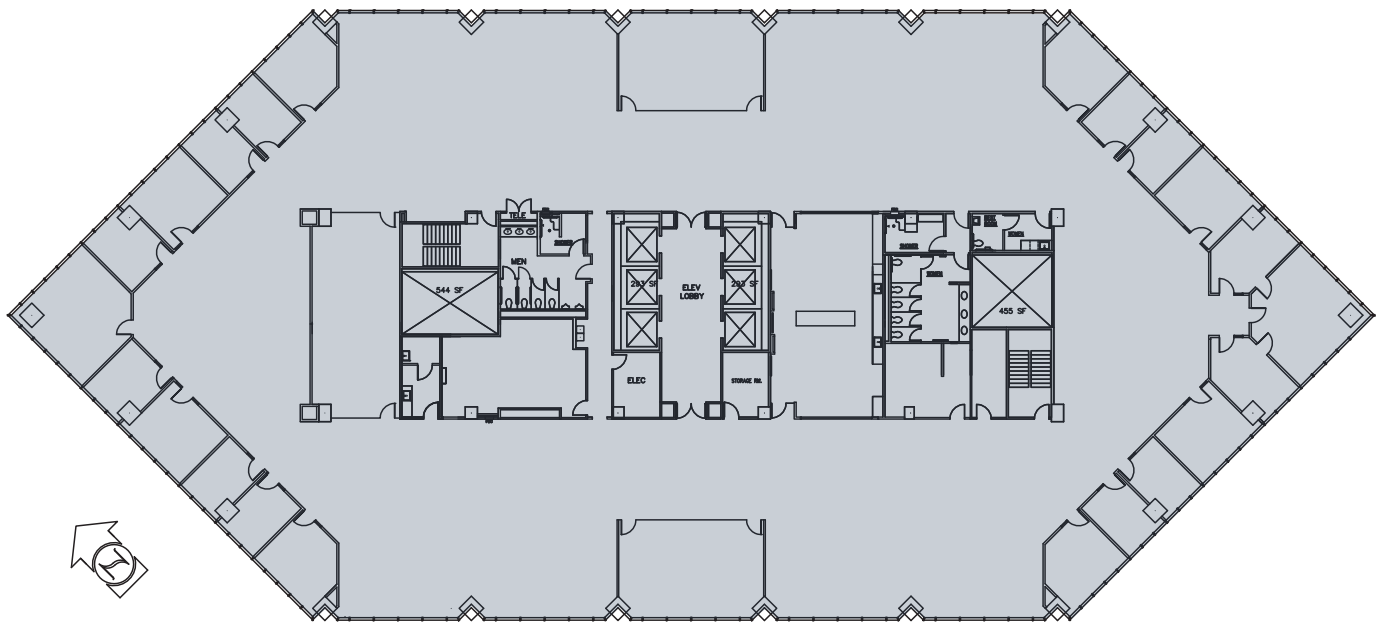
FLOOR 8: 9800 LA CIENEGA

- Suite 830 :: 9,346 SF

OFFICE FOR LEASE

9800 S LA CIENEGA BOULEVARD, INGLEWOOD

LEASE AVAILABILITY



FLOOR 14 – 9800 LA CIENEGA

- Suite 1400 :: 27,659 SF