

FOR SALE

LAND | 9.78 ACRES



**7055 20th St.
Vero Beach, FL**

426,016.8 +/- SQFT (9.78 Acres)



**Scan to access
full survey,
conceptual site
plan, and more!**

- OPPORTUNITY ZONE!
- Motivated Seller
- Residential | Commercial Land
- Frontage to State Road 60
- Zoned: RS-6
- Conceptual site plan included 49-56 +/- Units

Terms Negotiable

Call or text 954-224-8773 for more information!



JOE PELAYO, CCIM, SIOR
BROKER
trec@joepelayo.com
954.224.8773

TREC
Total Real Estate Consultants Inc.
www.trecfl.com

GEORGE PELAYO
BROKER ASSOCIATE
george@trecfl.com
954.482.1330



NOTICE: This information has been obtained from sources believed to be reliable but has not been verified. No warranty or representation, express or implied, is made as to the condition/legal adjustments of the property (or properties) referenced or as to the accuracy or completeness of the information contained, and same is submitted subject to errors, omissions, change of price, retail or other conditions, including but not limited to withdrawal without notice, and to any special listing conditions imposed by the property owner.

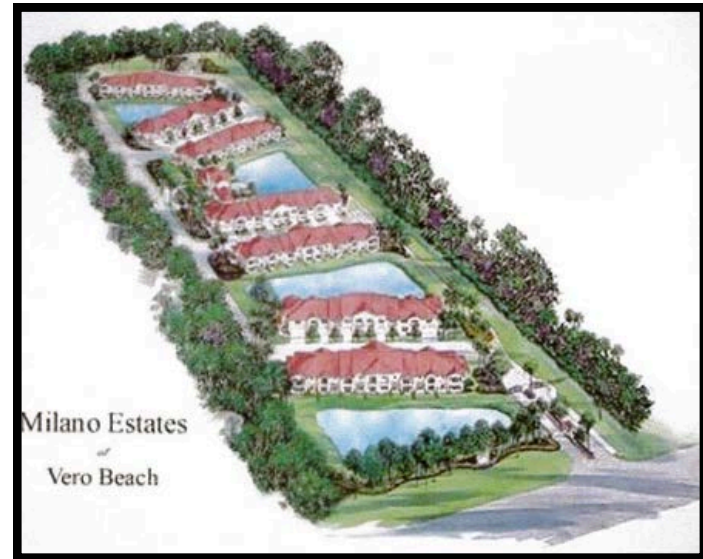
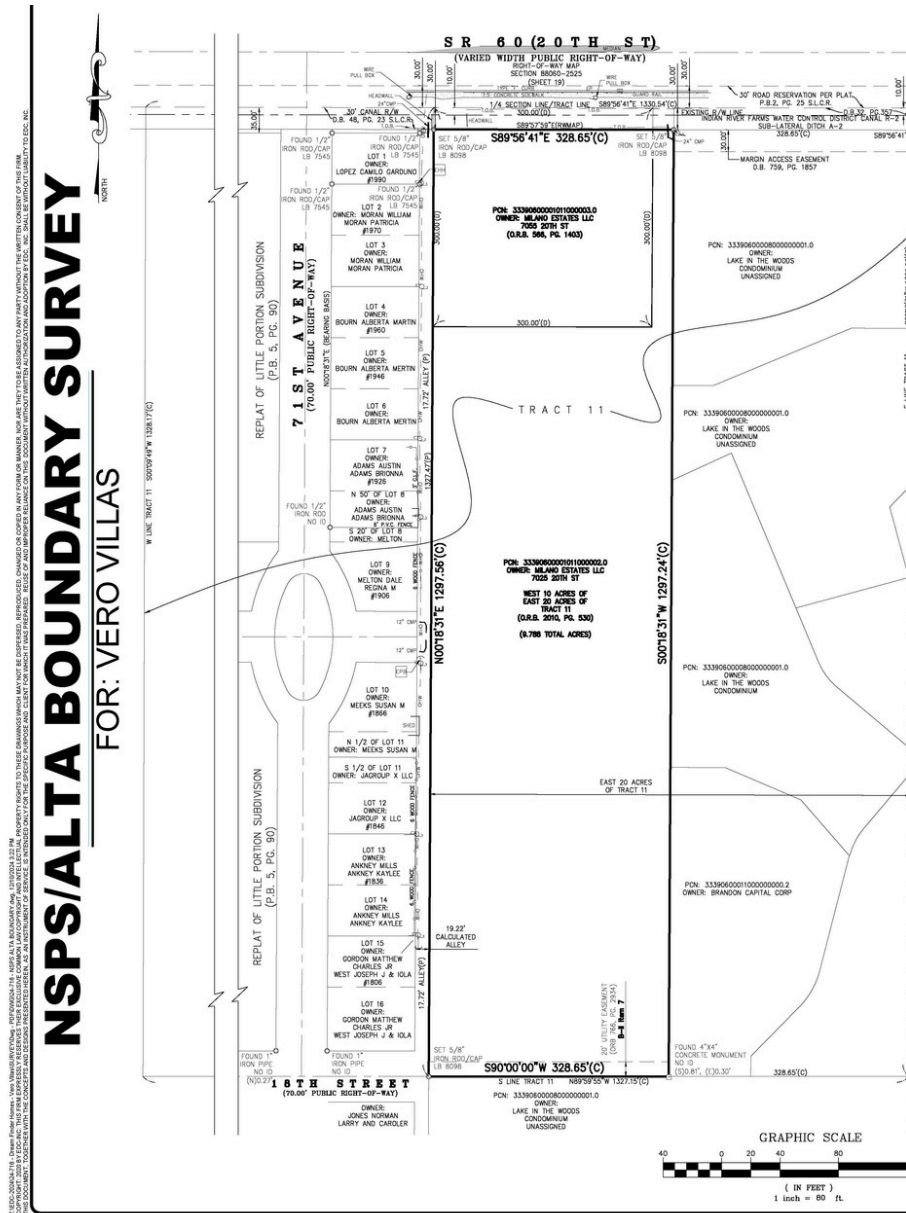
FOR SALE LAND | 9.78 ACRES

7055 20th St.
Vero Beach, FL

426,016.8 +/- SQFT (9.78 Acres)

SURVEY

SITE PLAN



Scan to
access
full survey,
conceptual
site plan,
and more!

Call or text 954-224-8773!



JOE PELAYO, CCIM, SIOR
BROKER
trec@joepelayo.com
954.224.8773

TREC
Total Real Estate Consultants Inc.
www.trecfl.com

GEORGE PELAYO
BROKER ASSOCIATE
george@trecfl.com
954.482.1330



NOTICE: This information has been obtained from sources believed to be reliable but has not been verified. No warranty or representation, express or implied, is made as to the condition/legal adjustments of the property (or properties) referenced or as to the accuracy or completeness of the information contained, and same is submitted subject to errors, omissions, change of price, retail or other conditions, including but not limited to withdrawal without notice, and to any special listing conditions imposed by the property owner.