

LINDEN STATION

307 W ELIZABETH AVENUE, NJ | 1,700 SF RETAIL UNIT AVAILABLE



NEW MIXED-USE DEVELOPEMNT Linden NJ Transit Train Station

1,796 SF

aura coffee

Coming Soon

DOOR & REMODEL
SHOWROOM

Coming Soon

- Prime retail storefronts in densely populated Linden, NJ
- Directly adjacent to NJ Transit train station & abundant parking
- Highly visible storefronts with high ceilings facing Elizabeth Ave
- Located at the base of new residential building with 234 units
- Ideal for restaurant, convenience, medical, retail and fitness

NEIGHBORHOOD TENANTS



NEW MIXED-USE DEVELOPMENT

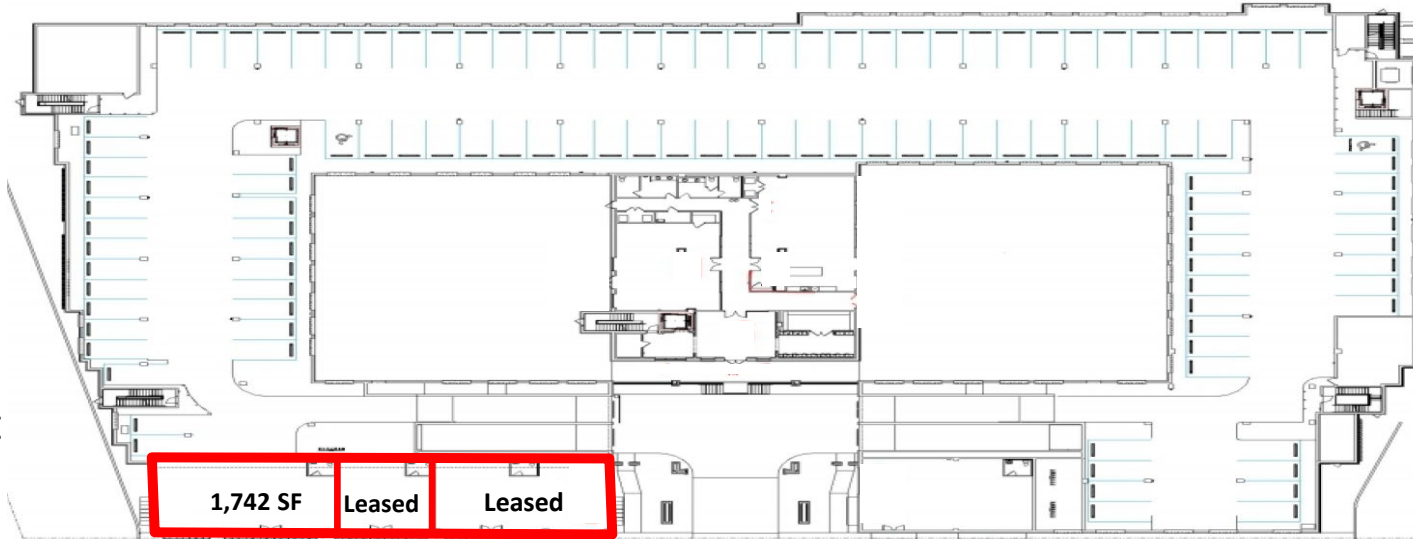
307 W ELIZABETH AVENUE, NJ | 1,700 SF RETAIL UNIT AVAILABLE



Linden NJ
Transit Station



Linden
Station
Parking Lot

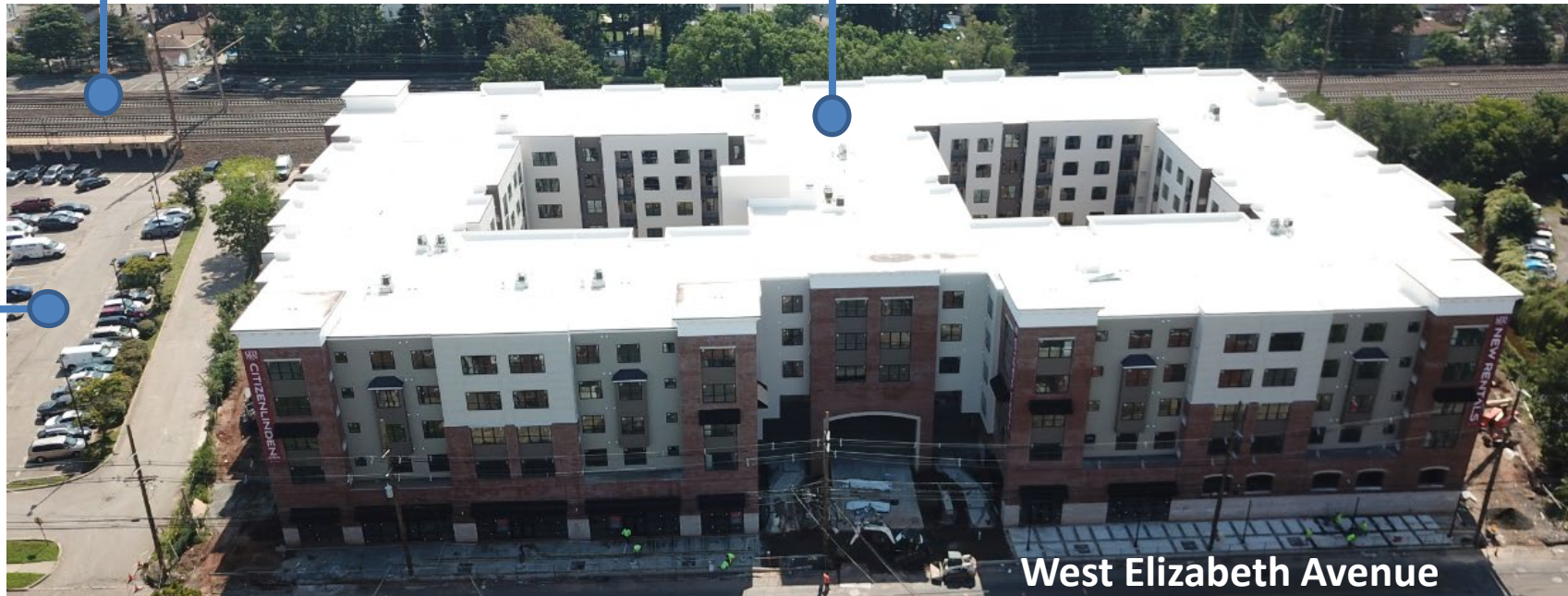


West Elizabeth Avenue



234 Residential Units

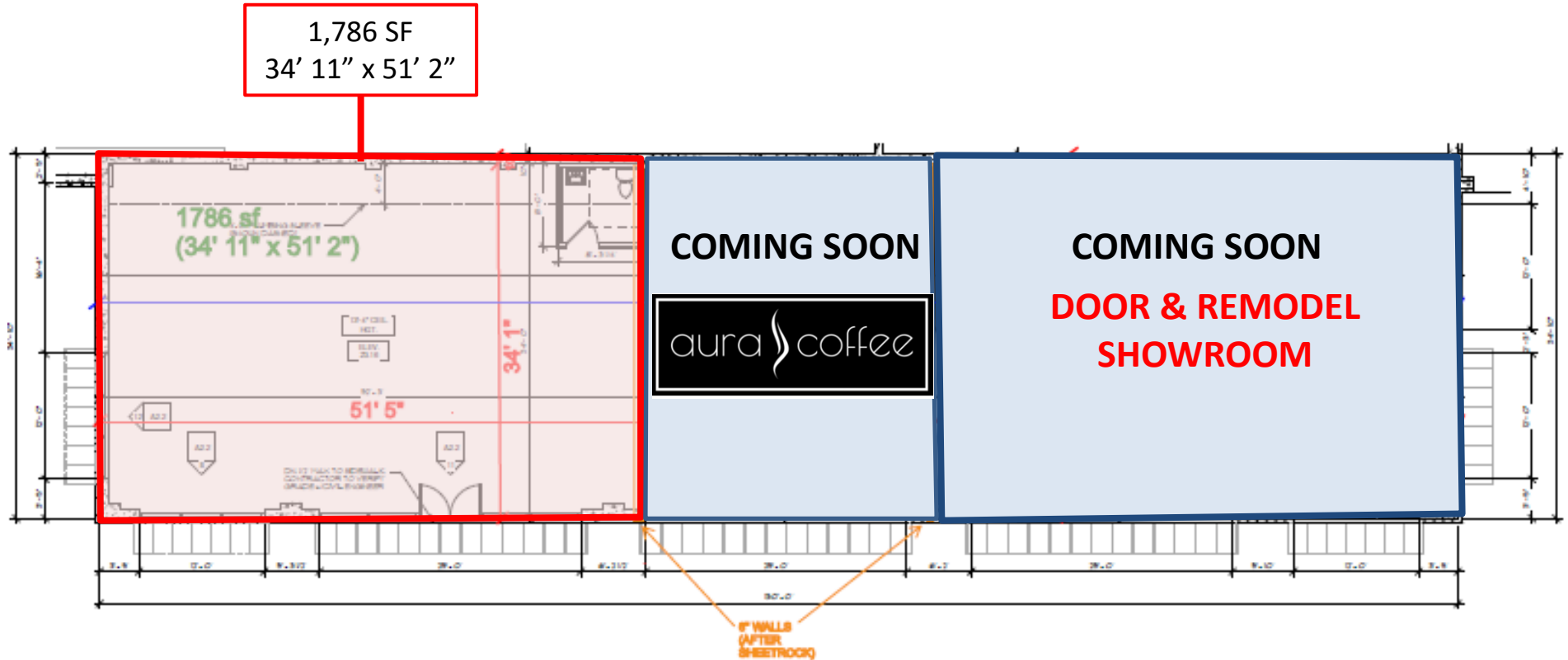
Linden Station
Parking Lot



West Elizabeth Avenue

NEW MIXED-USE DEVELOPMENT

307 W ELIZABETH AVENUE, NJ | 1,700 SF RETAIL UNIT AVAILABLE



LINDEN STATION

307 W ELIZABETH AVENUE, NJ | 1,700 SF RETAIL UNIT AVAILABLE



5 Miles Radius

DEMOGRAPHICS	2021	2026
POPULATION	434,559	438,520
HOUSEHOLDS	152,972	154,373
HOUSEHOLD INCOME	\$102,437	\$103,000



David Townes / Direct: +1 201 508 5268 / Cell: +1 917 993 5515 / david.townes@cushwake.com
Alana Friedman / Direct: +1 201 508 5258 / Cell: +1 201 741 0990 / alana.friedman@cushwake.com

CUSHMAN & WAKEFIELD
One Meadowlands Plaza, Floor 7
East Rutherford, NJ 07073
www.cushmanwakefield.com