



## FOR SUBLEASE

### *OFFICE SPACE*

1 HARTWELL PLACE  
LEXINGTON, MA

- 5,405 RSF
- AVAILABLE IMMEDIATELY
- FURNITURE AVAILABLE
- FLEXIBLE TERM THROUGH MAY 2027
- RENTAL RATE NEGOTIABLE
- BUILDING AMENITIES



FURNISHED, PLUG AND PLAY, CLASS A  
OFFICE SPACE WITH COMMON AREA  
CAFE, FITNESS CENTER, SHOWERS, AND  
CONFERENCE FACILITIES.



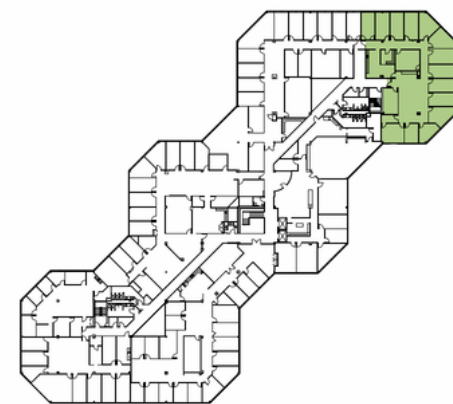
FOR MORE INFORMATION CONTACT:  
AMANDA SNELL, CCIM  
781-718-6453  
ASNELL@THESTEVENSGRP.COM

THE STEVENS GROUP | TEN POST OFFICE SQUARE  
SUITE 800 SOUTH | BOSTON



91 HARTWELL AVE, LEXINGTON, MA 02421  
FIT PLAN

FIT PLAN - OPTION 7	
ROOM TYPE	PROPOSED
6x6 CUBE	6
BENCHING	3
CONFERENCE ROOM	2
OFFICE	13
PANTRY	1
SERVER	1
STORAGE	1
WELLNESS	1



KEY PLAN