

# FOR LEASE

4,500 SF industrial space  
with 3.25 acres of laydown yard

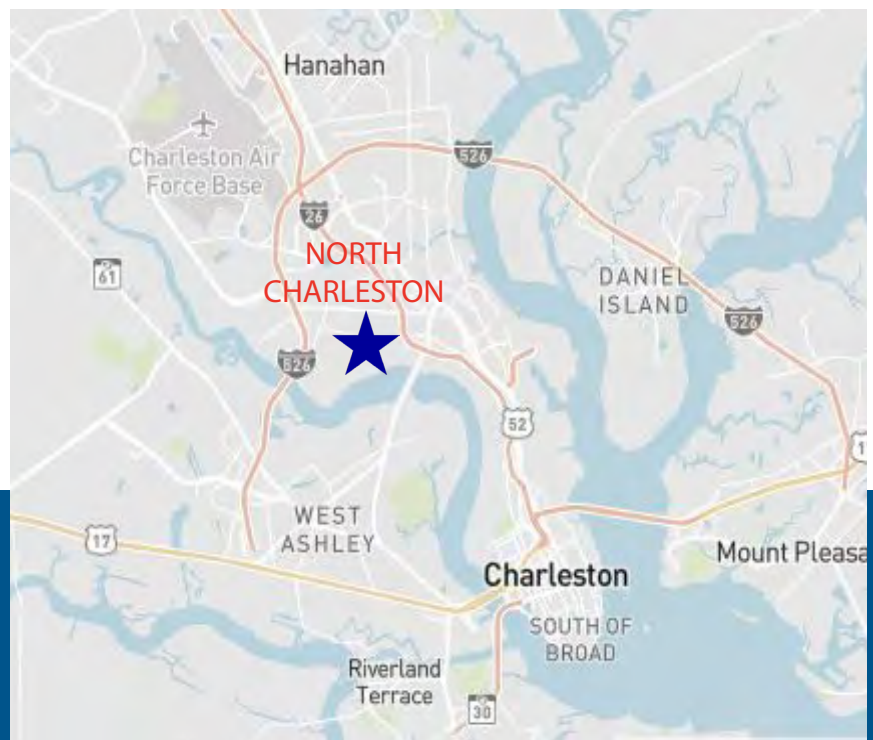


2675 Industrial Avenue  
North Charleston, SC 29405



## AVAILABLE SPACE

- 4,500 SF Building
- 1,500 SF - office
- 3,000 SF - warehouse
- 18' clear height
- (1) 14' x 14' grade level door
- Fenced, lit, and gated yard space
- Paved parking for +/- 20 cars
- M-2 Zoning, Heavy Industrial

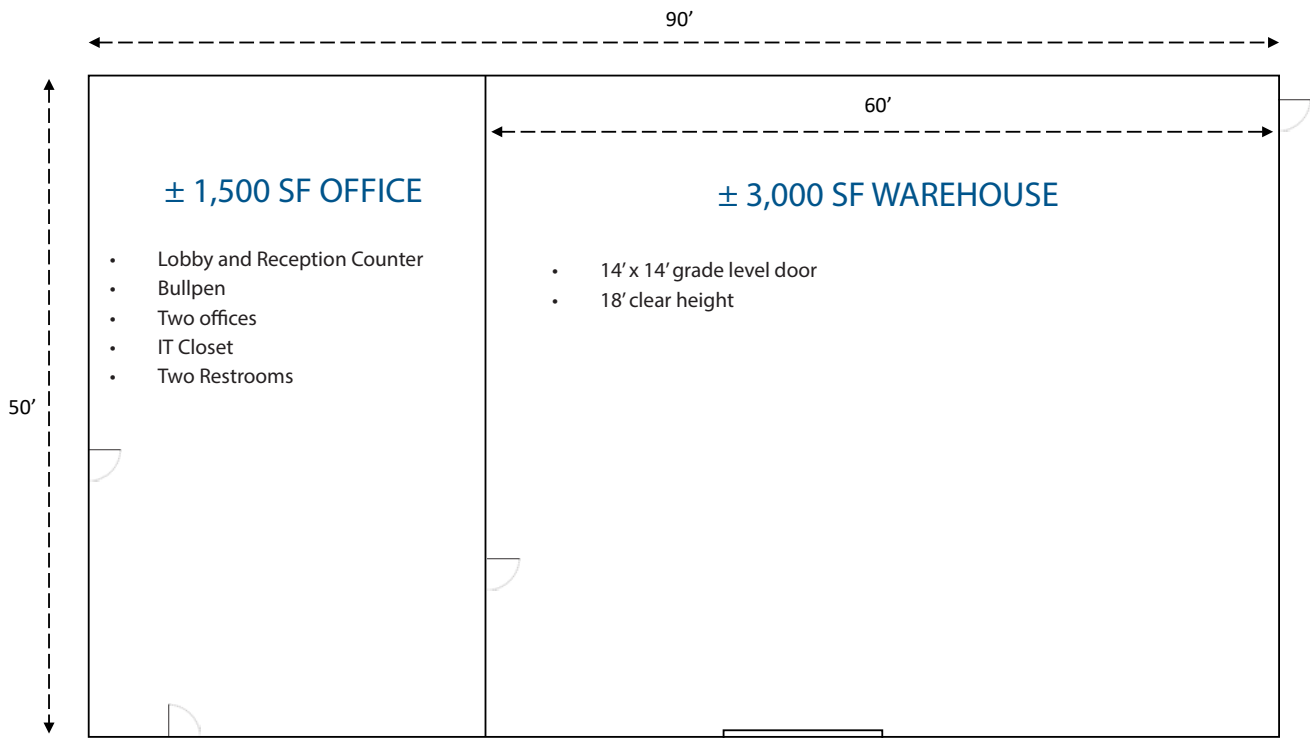


**TYLER SMITH**

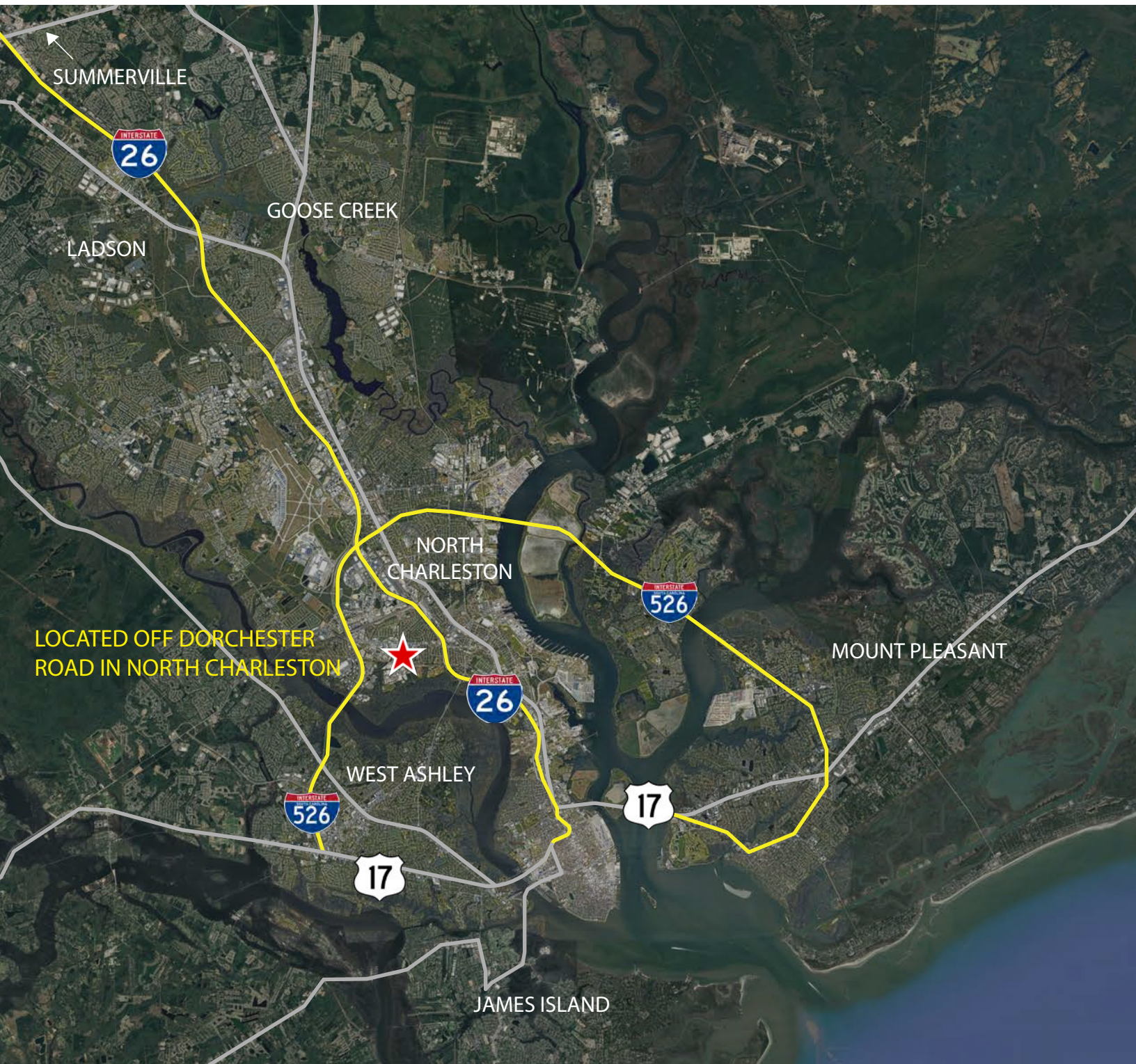
843.805.5118

[tyler.smith@jll.com](mailto:tyler.smith@jll.com)





# PROPERTY MAP



TYLER SMITH  
843.805.5118  
tyler.smith@jll.com

