



THE STEARMAN



PROFESSIONAL OFFICE SPACES FOR LEASE
THE STEARMAN

2425 S STEARMAN DR | CHANDLER, AZ



COMMERCIAL PROPERTIES INC.

Locally Owned. Globally Connected. CORFAC INTERNATIONAL

TEMPE: 2323 W University Drive, Tempe, AZ 85281 | 480.966.2301
SCOTTSDALE: 8767 E Via de Commercio, Suite 101, Scottsdale, AZ 85258 | www.cpi.az.com

Property Summary

Address	2425 S Stearman Dr Chandler, AZ
Property Name	The Stearman
Property Type	Office
Year Built	2018
Lot Size	±186,649 SF
Restrooms	Common Area

Available For Lease

Suite 220	±14,788 SF (Divisible to ±6,000 SF to ±7,000 SF)
-----------	---



For More Information, Please Contact:

Tyson Breinholt
D 480.966.7513
M 602.315.7131
tbreinholt@cpiaz.com

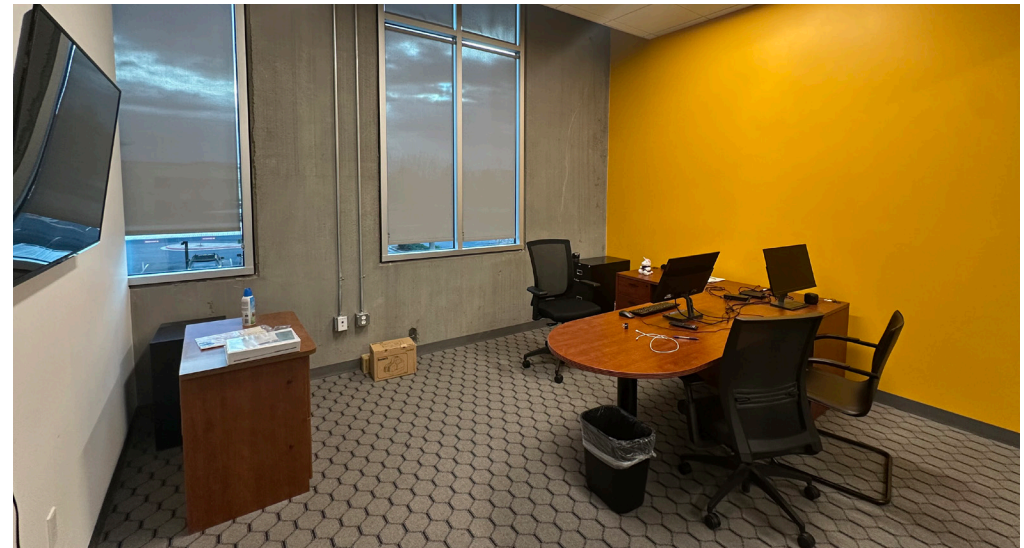
Caleb Allen
D 480.621.3290
M 480.622.4174
callen@cpiaz.com

The information contained herein has been obtained from various sources. We have no reason to doubt its accuracy; however, J & J Commercial Properties, Inc. has not verified such information and makes no guarantee, warranty or representation about such information. The prospective buyer or lessee should independently verify all dimensions, specifications, floor plans, and all information prior to the lease or purchase of the property. All offerings are subject to prior sale, lease, or withdrawal from the market without prior notice.

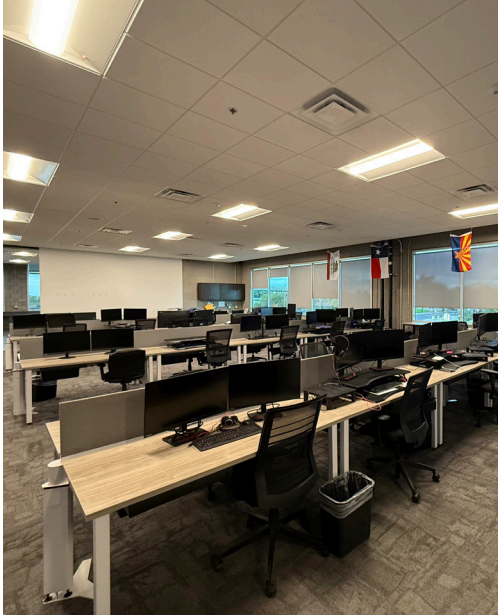
03 09 26

Floor Plan

Suite 220	±14,788 SF (Divisible to ±6,000 to ±7,000 SF)
Reception Area	Yes
Offices	17
Break Rooms	1
Conference Rooms	2
Copy Room	1
Training Room	Yes
Sprinkler	Yes



Suite 220 Photos





THE STEARMAN

The Stearman boasts an innovative, modern design, coupled with attractive aesthetics to provide companies with a Class A experience. The building is one-of-a-kind, with each detail thoughtfully planned to afford emerging generations of office users a unique corporate identity. The Stearman's unique construction style will allow users to be actively involved in the creation of a space that fully meets their needs. 10' finished ceilings and floor-to-ceiling glass gives this project a unique feel which will appeal to users desiring creative, high-tech space. The Stearman's highly desirable location give users unparalleled access to 1.2 million square feet of retail amenities as well as being strategically positioned in proximity to Loop 202.

For More Information, Please Contact:

Tyson Breinholt
D 480.966.7513
M 602.315.7131
tbreinholt@cpi.az.com

Caleb Allen
D 480.621.3290
M 480.622.4174
callen@cpi.az.com

