

VALENCIA TOWN CENTER

WORK WHERE HAPPINESS & OPPORTUNITY THRIVE

24300, 24303, 24305 TOWN CENTER DR & 24200 MAGIC MOUNTAIN PKWY | VALENCIA, CA



WELCOME!

Valencia Town Center is a vibrant mixed-use development in Valencia, California, offering nearly 400,000 SF of office and retail space across four Class A buildings.

The campus features two dedicated parking structures, ample surface parking, and easy access to the adjacent Valencia Town Center shopping mall. It's also adjacent to the 244-room Hyatt Valencia & Santa Clarita Conference Center, the 12-screen Regal Edwards Valencia IMAX theater, and several luxury apartment communities. A charming, walkable main street connects the office campus to the retail corridor and McBean Parkway. Nearby, you'll find popular retailers like Target, Whole Foods, Sprouts, and an upcoming Yard House next door.

PROPERTY HIGHLIGHTS



SHOPPING MALL
REDEVELOPMENT COMING SOON

OFFICE PROPERTIES

- ±34,000 RSF available now
- ±150,000 RSF available in 2026
- ±139,000 RSF available in 2028
- Ideal headquarters opportunity in central Valencia
- Walkable to extensive top-tier retail and dining amenities
- Adjacent to free, secure, and spacious parking garages (4.00/1,000 SF)
- Located within 1.5 miles of I-5 exits at Magic Mountain Parkway and Valencia Blvd
- 24/7 on-site security with quick response times
- On-site property management

PROPERTY SITE PLAN

North Parking Structure
26950 THEATRE DR



VALENCIA
TOWN CENTER

24200 MAGIC MOUNTAIN PKWY



VALENCIA
TOWN CENTER

24305 TOWN CENTER DR



VALENCIA
TOWN CENTER

24303 TOWN CENTER DR



VALENCIA
TOWN CENTER

24300 TOWN CENTER DR

South Parking Structure
26735 CIRCLE DR

AVAILABILITIES



VALENCIA
TOWN CENTER

VTC 1 | 24300 TOWN CENTER DRIVE

Suite 205
±2,710 RSF | Available 2028

Suite 210
±3,542 RSF | Available 2028

Suite 230
±2,227 RSF | Available 2028

Suite 240
±1,022 RSF | Available 2028

Suite 300
±18,609 RSF | Available 2028

Suite 250
±1,389 RSF | Available Now

Located on Northwest
corner of building

Suite 201 (Interior Space)
±609 RSF | Available Now

Suite 100
±3,745 RSF | Available 2028

Approximately 32,000 RSF Available in 2028

AVAILABILITIES

VTC 2 | 24303 TOWN CENTER DRIVE



VALENCIA
TOWN CENTER



Suite 400
±20,010 RSF | Available 4/1/26

Suite 300
±20,010 RSF | Available 4/1/26

Suite 200
±20,011 RSF | Available 4/1/26

Approximately 60,000 RSF
Available in 2026

AVAILABILITIES



VALENCIA
TOWN CENTER

VTC 3 | 24305 TOWN CENTER DRIVE

Suite 600
±22,111 RSF | Available 4/1/26

Suite 500
±22,111 RSF | Available 4/1/26

Suite 400
±22,200 RSF | Available Now

Suite 300
±22,111 RSF | Available 4/1/26

Suite 200
±22,111 RSF | Available 4/1/26

Suite 130-139
±2,173 RSF | Available 4/1/26

Located on the opposite
side of building

Approximately 90,800 RSF
Available in 2026

AVAILABILITIES



VALENCIA
TOWN CENTER

VTC 4 | 24200 MAGIC MOUNTAIN PARKWAY

Suite 300
±25,192 | Available 2028

Suite 400
±25,192 RSF | Available 2028

Suite 500
±25,192 RSF | Available 2028

Suite 100
±2,455 RSF | Available Now

Suite 105
±3,060 RSF | Available 2028

Located on the opposite
side of building

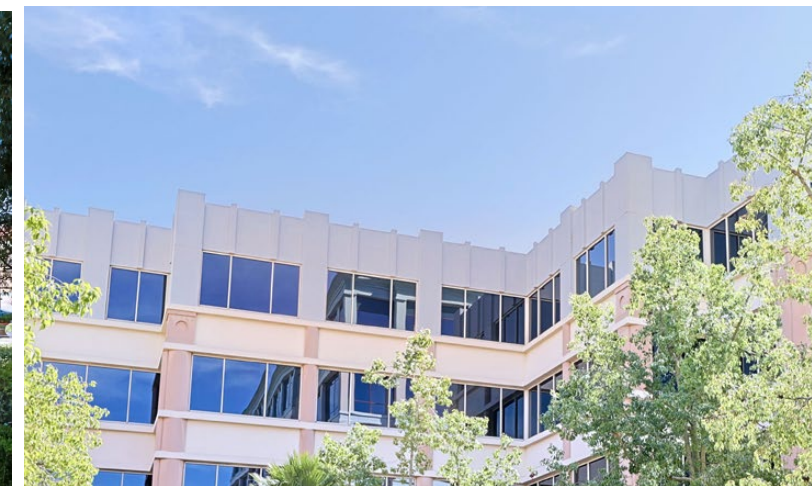
Suite 200
±25,192 RSF | Available 2028

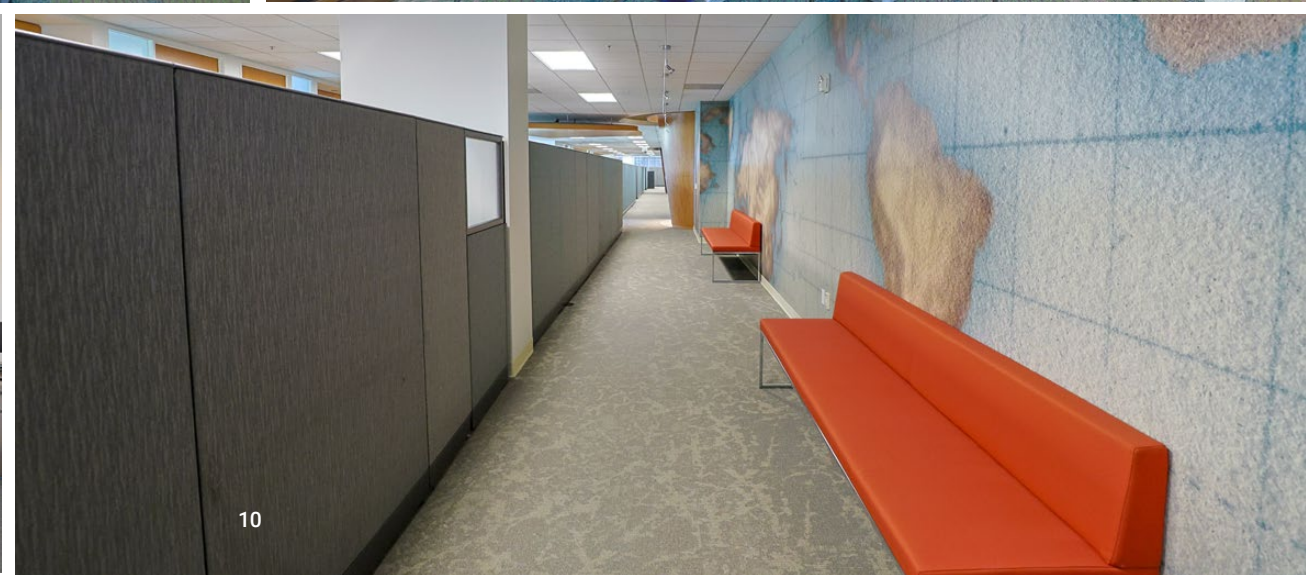
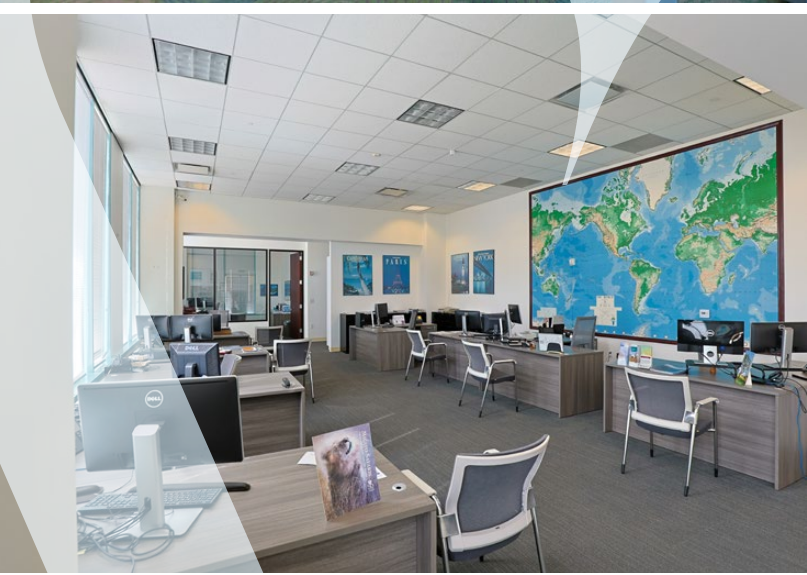
Suite 120
±4,169 RSF | Available Now

Suite 130
±1,446 RSF | 30 Days

Suite 135
±1,753 RSF | 30 Days

Approximately 104,000 RSF Available in 2028

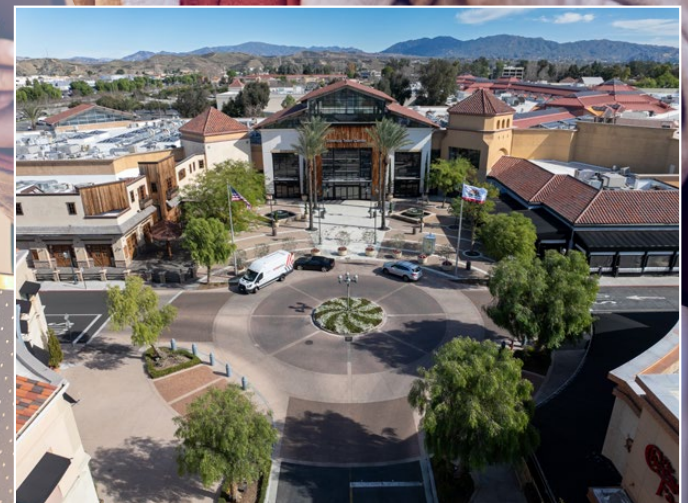




VALENCIA TOWN CENTER MALL REDEVELOPMENT

In 2023, Centennial acquired the Valencia Town Center Mall (formerly Westfield Valencia), marking a new chapter for the 69-acre property. With over 140 shops and restaurants, the center features major anchors including Macy's, JCPenney, H&M, Gold's Gym, and Cinemark Cinema.

Centennial has announced plans to redevelop the mall into a dynamic mixed-use destination, blending retail, dining, entertainment, and office space in a vibrant live-work-play environment.



A WEALTH OF WALKABLE AMENITIES

THE PROMENADE SHOPPING CENTER



RIVER OAKS SHOPPING CENTER



VALENCIA TOWN CENTER SHOPPING MALL



Magic Mountain Parkway

McBean Parkway

Valencia Blvd



VALENCIA CROSSROADS



VALENCIA BY THE NUMBERS

DEMOGRAPHICS



#6 | Santa
Clarita

High Schools Ranked
Among Top in US

by [US News & World Report, 2024.](#)



Data Source: Esri, 2025



#2 | Santa
Clarita

Home & Community
Safety Rank

Source: [WalletHub.](#)

2024 Population

1-Mile Radius	13,400
3-Mile Radius	96,557
5-Mile Radius	191,716

Average Household Income
\$167,237

5-Mile Radius



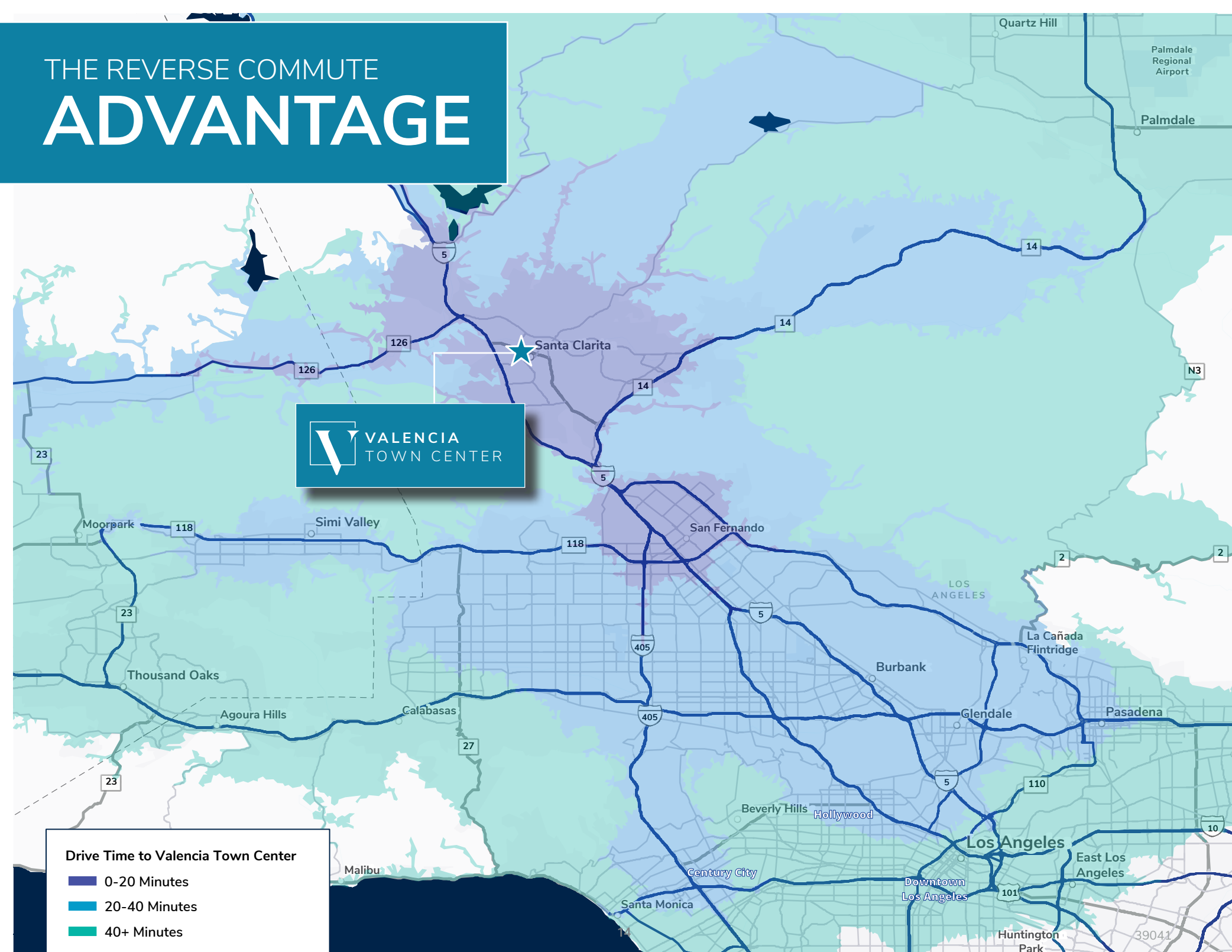
THE REVERSE COMMUTE ADVANTAGE



VALENCIA
TOWN CENTER

Drive Time to Valencia Town Center

- 0-20 Minutes
- 20-40 Minutes
- 40+ Minutes





24300, 24303, 24305 TOWN CENTER DR & 24200 MAGIC MOUNTAIN PKWY | VALENCIA, CA

David Solomon

Sr. Executive Vice President

Lic. 01209699

+1 818.937.4545

david.solomon@colliers.com

Kevin Fenenbock

Sr. Executive Vice President

Lic. 01165115

+1 818.325.4118

kevin.fenenbock@colliers.com

Emma Scott

Associate

Lic. 02211695

+1 310.966.7076

emma.scott@colliers.com

This document/email has been prepared by Colliers for advertising and general information only. Colliers makes no guarantees, representations or warranties of any kind, expressed or implied, regarding the information including, but not limited to, warranties of content, accuracy and reliability. Any interested party should undertake their own inquiries as to the accuracy of the information. Colliers excludes unequivocally all inferred or implied terms, conditions and warranties arising out of this document and excludes all liability for loss and damages arising there from. This publication is the copyrighted property of Colliers and/or its licensor(s). © 2025. All rights reserved. This communication is not intended to cause or induce breach of an existing listing agreement. Colliers International Greater Los Angeles, Inc.

