

# 211

WEST 80TH STREET  
BETWEEN BROADWAY & AMSTERDAM AVENUE  
UPPER WEST SIDE





# 211

## WEST 80TH STREET

BETWEEN BROADWAY & AMSTERDAM AVENUE  
UPPER WEST SIDE

SIZE: 1,262 SF Lower Level

FRONTAGE: 10'

POSSESSION: Immediate

TRANSPORTATION: 1 2

### HIGHLIGHTS:

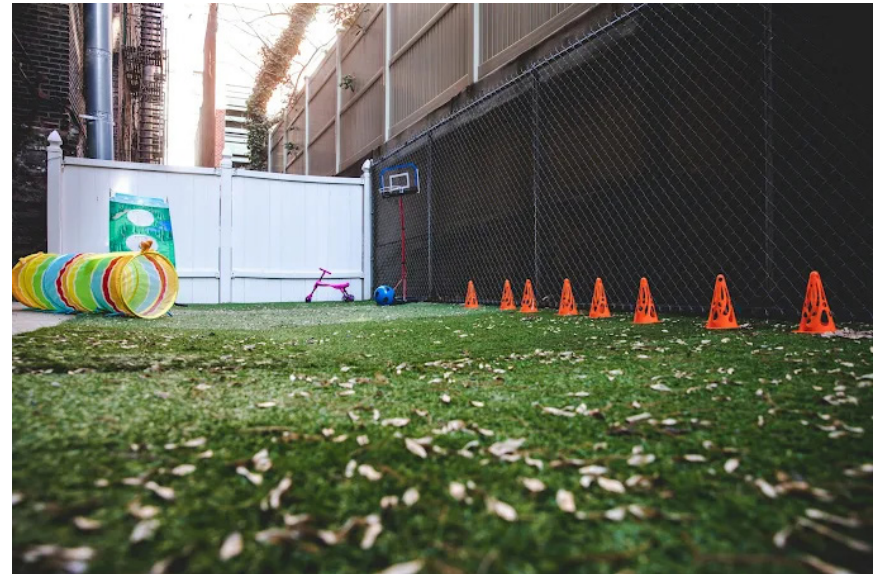
- Former Kids Play
- Backyard included
- High foot traffic area
- Dense residential neighborhood
- Neighboring tenants include:  
*Barnes & Noble, 5 Napkin Burger, Maison Pickle, Mattress Firm, Zabar's, Starbucks, Staples, Bareburger, Verizon, NY Sports Club, Van Leeuwen, Insomnia Cookies, Chase, Bank of America, Staples, Claire's, Tacombi & many more!*



# 211

WEST 80TH STREET

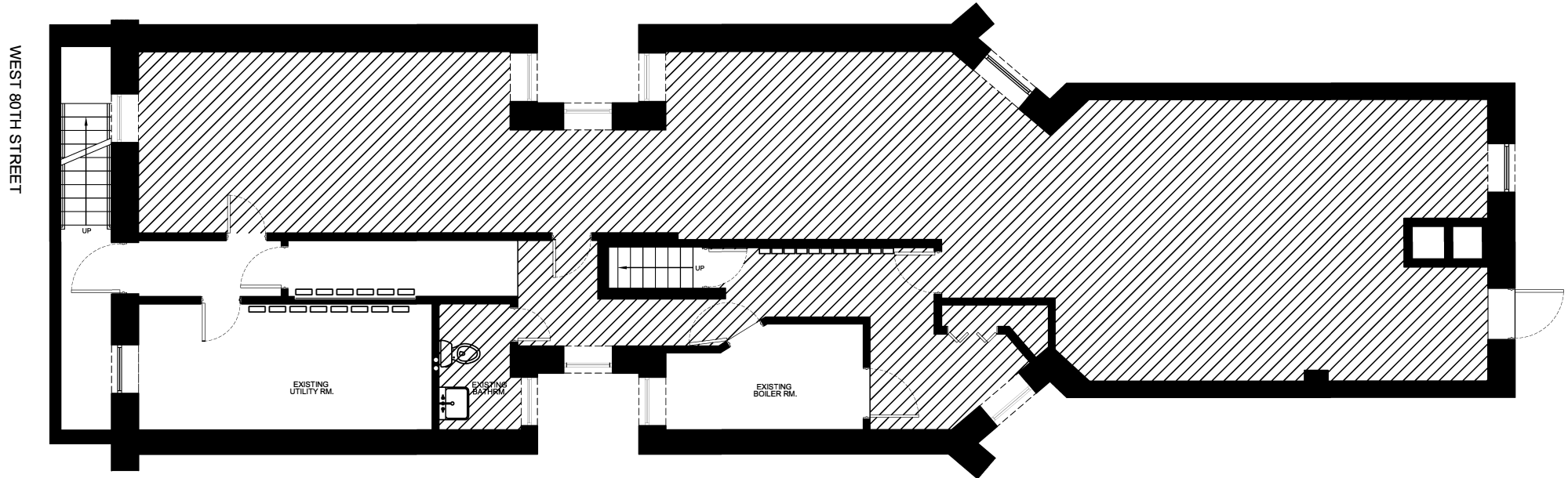
INTERIORS & BACKYARD AREA:



# 211

WEST 80TH STREET

FLOOR PLANS:  
LOWER LEVEL - 1,262 SF



# 211

WEST 80TH STREET  
BETWEEN BROADWAY & AMSTERDAM AVENUE  
UPPER WEST SIDE

FOR MORE INFORMATION,  
PLEASE CONTACT:

**JORDAN RAPHAN**

516.776.4771 | JRaphan@ksrny.com

**JOSH BERKUN**

516.459.9251 | JBerkun@ksrny.com

