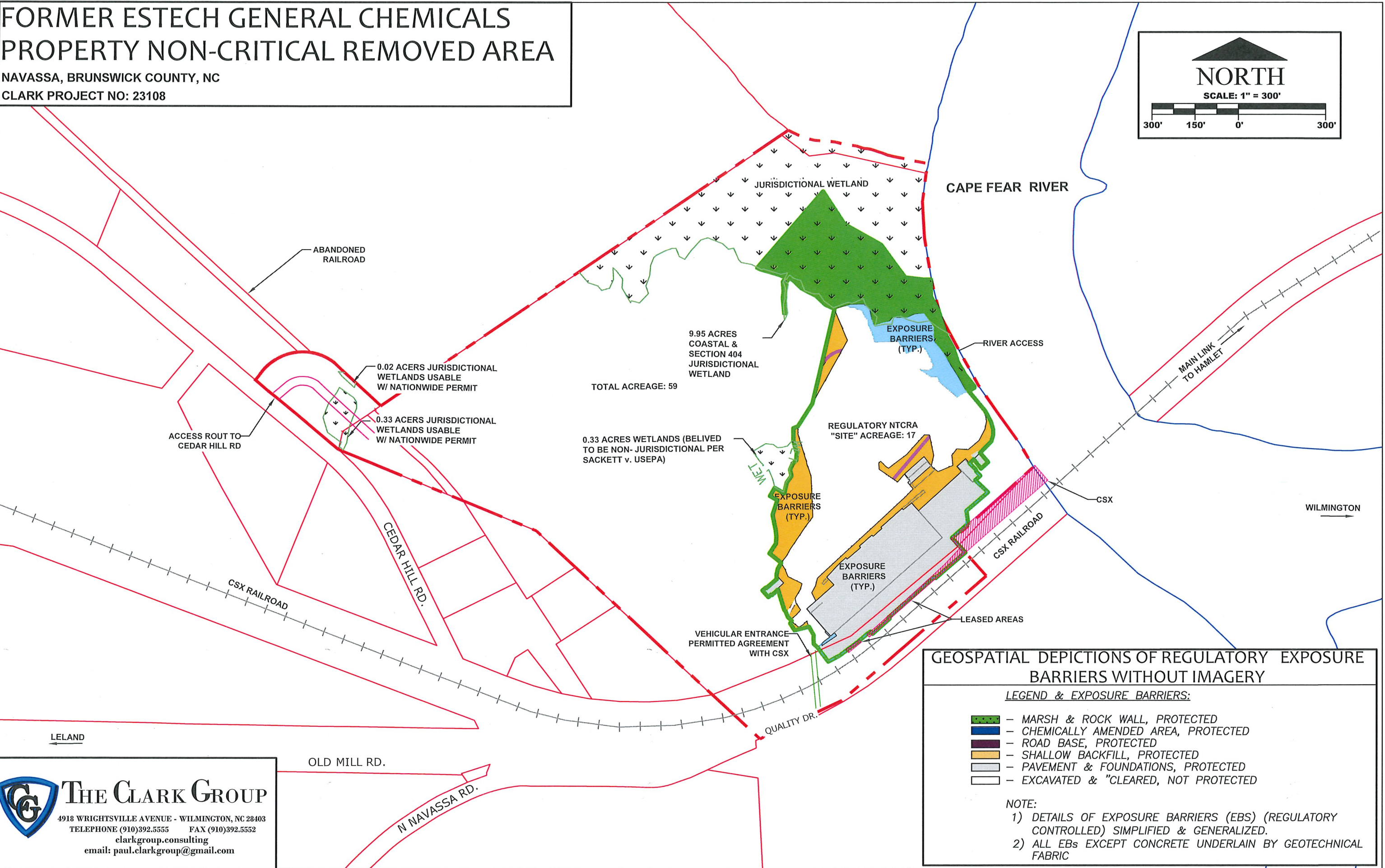


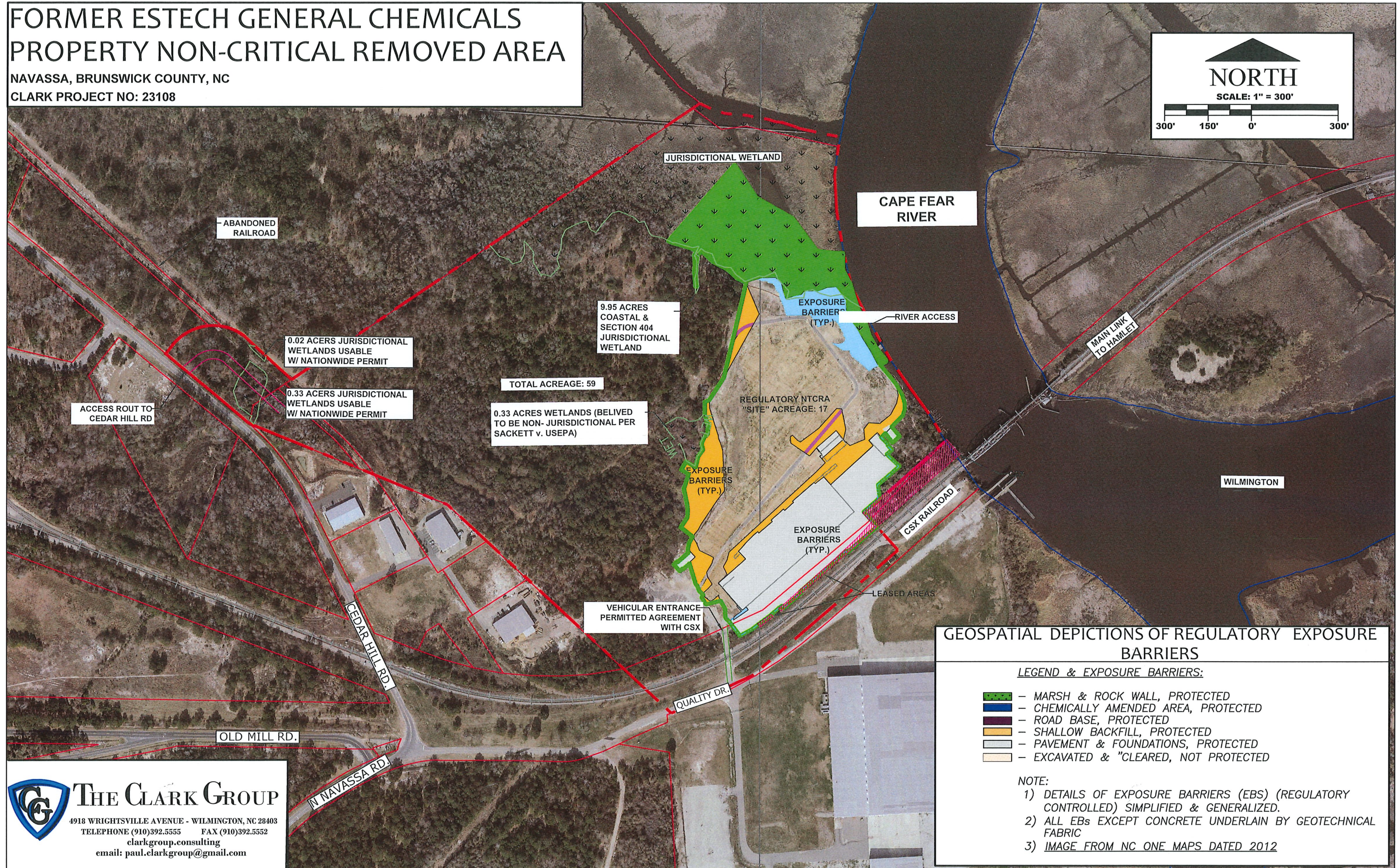
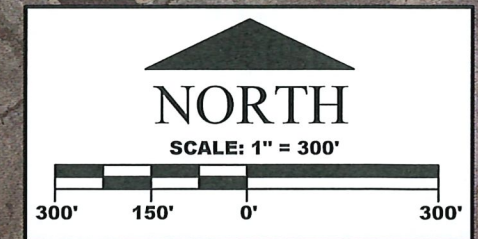
FORMER ESTECH GENERAL CHEMICALS
PROPERTY NON-CRITICAL REMOVED AREA

NAVASSA, BRUNSWICK COUNTY, NC
CLARK PROJECT NO: 23108



FORMER ESTECH GENERAL CHEMICALS PROPERTY NON-CRITICAL REMOVED AREA

NAVASSA, BRUNSWICK COUNTY, NC
CLARK PROJECT NO: 23108



GEOSPATIAL DEPICTIONS OF REGULATORY EXPOSURE BARRIERS

LEGEND & EXPOSURE BARRIERS:

- MARSH & ROCK WALL, PROTECTED
- CHEMICALLY AMENDED AREA, PROTECTED
- ROAD BASE, PROTECTED
- SHALLOW BACKFILL, PROTECTED
- PAVEMENT & FOUNDATIONS, PROTECTED
- EXCAVATED & "CLEARED, NOT PROTECTED

NOTE:

- 1) DETAILS OF EXPOSURE BARRIERS (EBS) (REGULATORY CONTROLLED) SIMPLIFIED & GENERALIZED.
- 2) ALL EBs EXCEPT CONCRETE UNDERLAIN BY GEOTECHNICAL FABRIC
- 3) IMAGE FROM NC ONE MAPS DATED 2012