



LARGEST CULTIVATION / DISTRIBUTION FACILITY IN NYS

1113 Herkimer Rd, Utica, NY 13502

OFFERING MEMORANDUM

TABLE OF CONTENTS

4

PROPERTY SUMMARY

Overview
Investment Highlights
Location Highlights

9

DEMOGRAPHICS

Area Demographics
Projected Growth

EXCLUSIVELY PRESENTED BY:



TODD WENZEL

CEO / Managing Broker

Direct: 315.882.1600
twenzel@wyzeCRE.com



JASON YOUNG

Licensed NYS RE Salesperson

Direct: 315.727.7798
jyoung@wyzeCRE.com



WYZE

351 S Warren St, Suite 217
Syracuse, NY 13202

Office: 315.288.3828

www.wyzeCRE.com





INVESTMENT SUMMARY

1113 Herkimer Road is a well-positioned greenhouse facility in Utica, New York. The property, situated on approx. 64 acres, is located in a designated Opportunity Zone, and is available for Sale or Lease (easily divided). Discover a best-in-class facility that meets all horticultural needs and benefits from Planned Development (PD) and Regulated Cannabis zoning.

The nearly one-million-square-foot facility includes 740,000 square feet of computer climate-controlled greenhouse space, a 108,000 square foot industrial warehouse with 22 loading docks and cold storage, ample employee parking, and office space for planning and logistics. The City of Utica provides water and sewer, and on-site transmission lines provide 20,000 amps of power. In addition to the expansive greenhouse facility, approximately 200,000 square feet of greenhouse infrastructure.



PROPERTY SUMMARY

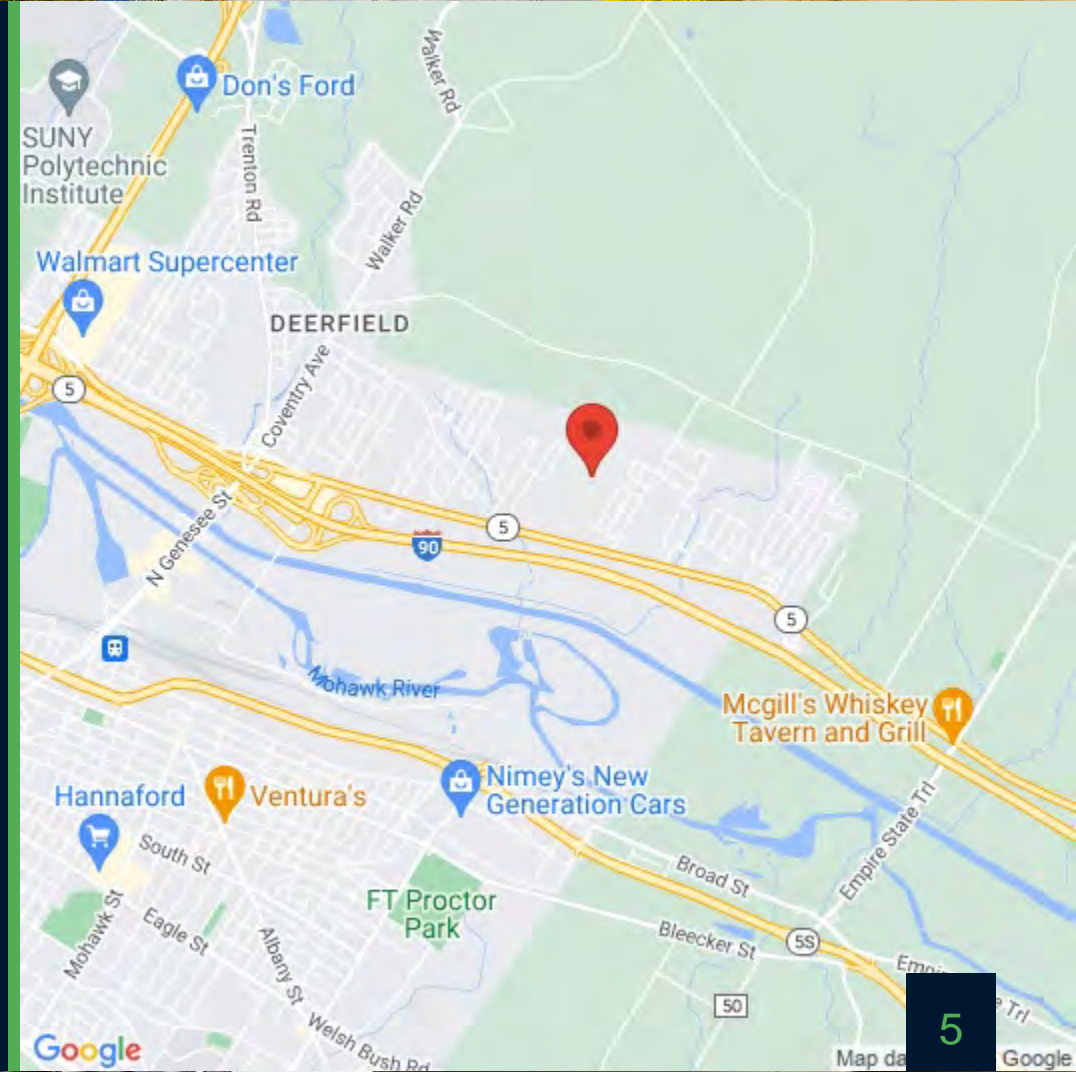
Offering Price	\$25,000,000.00
Lease Price	Upon Request
Building SqFt	108,000 SqFt
Greenhouse	740,000 SqFt
Development Ready	200,000 SqFt
Power	20,000 Amps
Lot Size (acres)	64.00
Water & Sewer	Utica City Provided
Year Built	1950
Zoning Type	Commercial
Parcel ID	301600 307.16-1-18





INVESTMENT HIGHLIGHTS

- Nearly one million SF greenhouse/cultivation facility is available for sale, with an additional 200,000 SF of greenhouse infrastructure ready for development.
- Property features include computer climate-controlled greenhouses, a warehouse with 22 loading docks, cold storage, and office space.
- Situated on approx. 64 acres with Planned Development and Regulated Cannabis zoning in an Opportunity Zone with water and sewer provided by the city.
- Ideally located in Upstate New York's Mohawk Valley with convenient access to I-90 for distribution throughout NYS.
- 55 miles to Syracuse, 95 miles to Albany, and just 200 miles to NYC.







**1113 Herkimer Rd,
Utica, NY 13502**

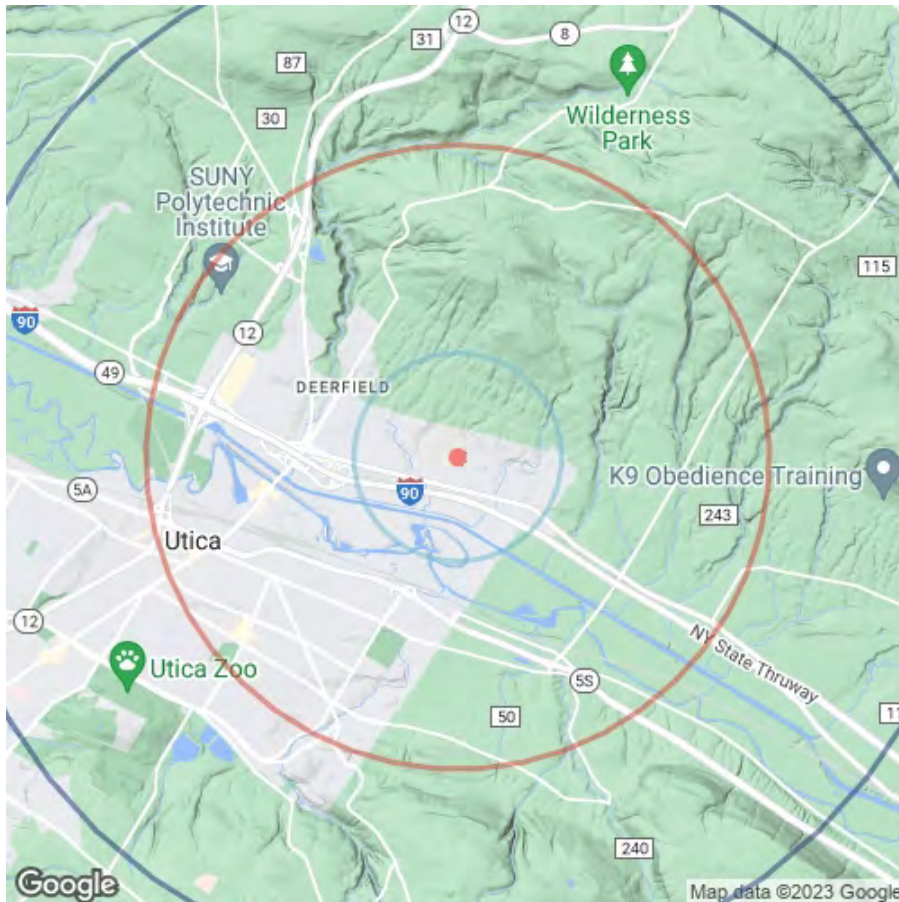


32	Corridor 2.
	42' x 132' = 5,544 SFT
	
	
	
	
	
	
	
	
	
	
	
	
	
	
	
	
	
	
	
	
	
	
	
	
	
	
	
	



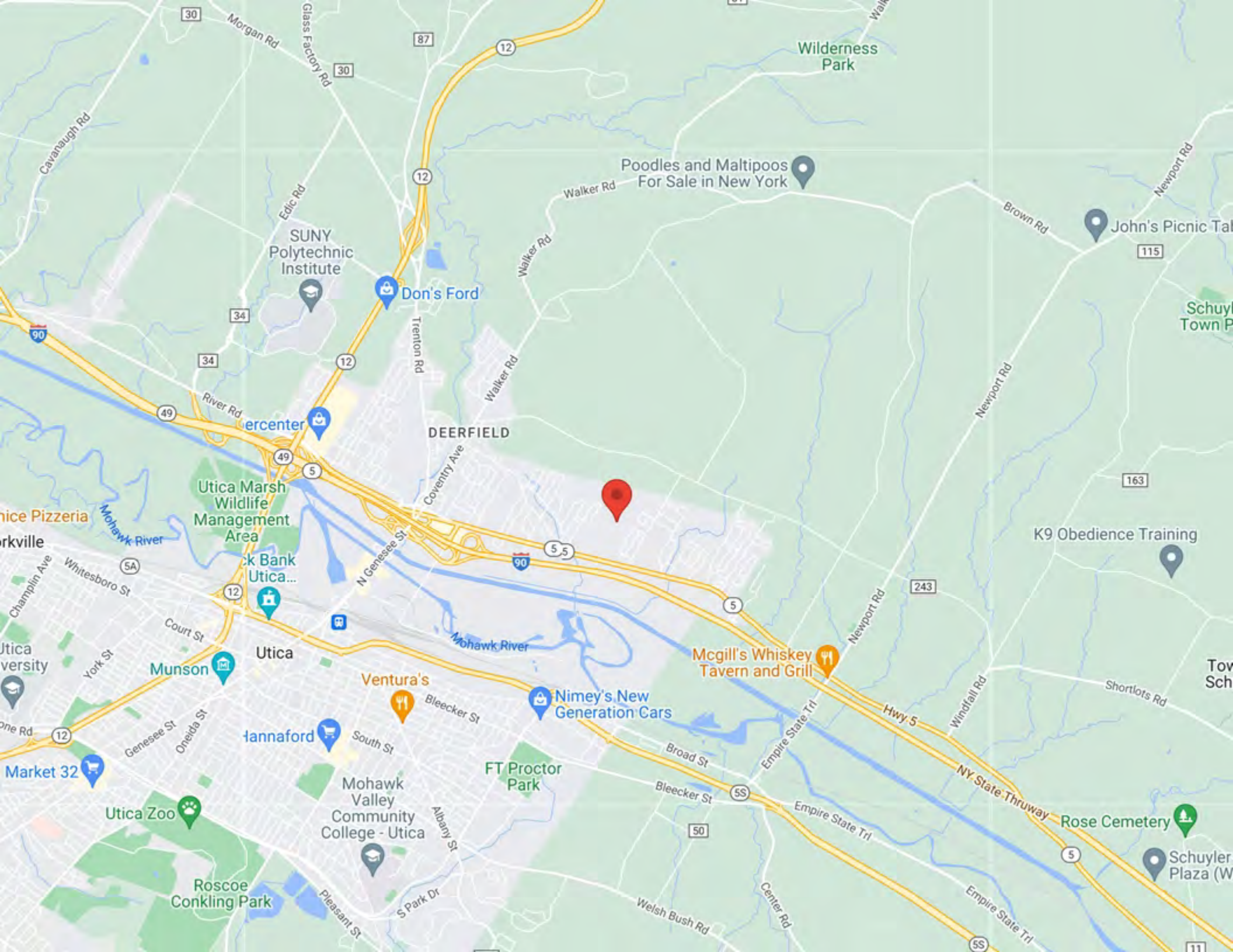
DEMOGRAPHICS

POPULATION	1 MILE	3 MILE	5 MILE
2000 Population	4,486	31,478	72,425
2010 Population	4,534	32,604	74,515
2023 Population	4,259	33,754	76,669
2028 Population	4,145	33,415	75,864
2023-2028 Growth Rate	-0.54 %	-0.2 %	-0.21 %
2023 Daytime Population	2,772	40,079	83,529



2023 HOUSEHOLD INCOME	1 MILE	3 MILE	5 MILE
less than \$15000	119	2,210	4,856
\$15000-24999	153	1,705	3,339
\$25000-34999	83	1,307	2,954
\$35000-49999	348	2,187	4,580
\$50000-74999	303	2,403	5,004
\$75000-99999	263	1,536	3,421
\$100000-149999	383	1,787	3,747
\$150000-199999	98	530	1,227
\$200000 or greater	57	285	1,016
Median HH Income	\$ 64,413	\$ 46,182	\$ 47,201
Average HH Income	\$ 83,455	\$ 65,066	\$ 69,690

HOUSEHOLDS	1 MILE	3 MILE	5 MILE
2000 Total Households	1,777	13,056	28,959
2010 Total Households	1,888	13,336	29,317
2023 Total Households	1,808	13,957	30,163
2028 Total Households	1,789	13,993	30,196
2023 Average Household Size	2.31	2.31	2.4
2023 Owner Occupied Housing	1,305	7,557	16,455
2028 Owner Occupied Housing	1,305	7,652	16,646
2023 Renter Occupied Housing	503	6,400	13,708
2028 Renter Occupied Housing	485	6,341	13,550
2023 Vacant Housing	88	1,363	3,747
2023 Total Housing	1,896	15,320	33,910



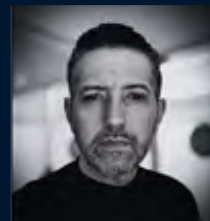
CONFIDENTIALITY STATEMENT

The information contained in the following offering memorandum is proprietary and strictly confidential. It is intended to be reviewed only by the party receiving it from WYZE and it should not be made available to any other person or entity without the written consent of WYZE.

By taking possession of and reviewing the information contained herein the recipient agrees to hold and treat all such information in the strictest confidence. The recipient further agrees that recipient will not photocopy or duplicate any part of the offering memorandum. If you have no interest in the subject property, please promptly return this offering memorandum to WYZE. This offering memorandum has been prepared to provide summary, unverified financial and physical information to prospective purchasers, and to establish only a preliminary level of interest in the subject property. The information contained herein is not a substitute for a thorough due diligence investigation. WYZE has not made any investigation, and makes no warranty or representation with respect to the income or expenses for the subject property, the future projected financial performance of the property, the size and square footage of the property and improvements, the presence of absence of contaminating substances, PCBs or asbestos, the compliance with local, state and federal regulations, the physical condition of the improvements thereon, or financial condition or business prospects of any tenant, or any tenant's plans or intentions to continue its occupancy of the subject property. The information contained in this offering memorandum has been obtained from sources we believe reliable; however, WYZE has not verified, and will not verify, any of the information contained herein, nor has WYZE conducted any investigation regarding these matters and makes no warranty or representation whatsoever regarding the accuracy or completeness of the information provided. All potential buyers must take appropriate measures to verify all of the information set forth herein. Prospective buyers shall be responsible for their costs and expenses of investigating the subject property.

PROPERTY SHOWINGS ARE BY APPOINTMENT ONLY.
PLEASE CONTACT THE WYZE ADVISOR FOR MORE DETAILS.

EXCLUSIVELY PRESENTED BY:

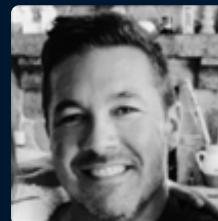


TODD WENZEL

CEO / Managing Broker

Direct: 315.882.1600

twenzel@wyzeCRE.com



JASON YOUNG

Licensed NYS RE Salesperson

Direct: 315.727.7798

jyoung@wyzeCRE.com



WYZE

351 S Warren St, Suite 217
Syracuse, NY 13202

Office: 315.288.3828

www.wyzeCRE.com