



Exceptional Second Generation Medical Office or Office Space For Lease

**1098 FOSTER CITY BLVD
FOSTER CITY, CA**

Area

±1,000-11,892 SF Available

Available Suites:

- Suite B-202: ±1,448 SF
1 Private Office/Conference Room, Breakroom with Sink, & Storage
 - Suite 205: ±1,700 SF
 - Suite 208: ±1,000 SF
- Can be combined for ±2,700 SF
- Suite A-303: ±1,900 SF
Great Natural Light! Reception, 4 Private Offices, Conference Room, Storage, Kitchenette, and Open Office Area
 - Suite A-304, A-305: ±5,844 SF
Multi-Purpose Medical Space including 13 Office/Exam Rooms with 5 Sinks

Property Highlights

Grand Private Outside Patio for Dining and Entertainment
(All Suites except B-202/A-303)

On-Site Management

On-Site Amenities include 99 Ranch Market, Numerous Restaurants, UPS, Salon, and Dry Cleaners

Numerous Related Medical/Dental Tenants including Optometry, Urgent Care, Dentists, Acupuncture and Chiropractic

Plentiful free parking

Close proximity to Hillsdale Blvd and Highway 92

For information, please contact:

Roger Oser

Senior Managing Director

t 650-358-5262

roger.oser@nmrk.com

CA RE License # 00826289

Owned & Managed by



NEWMARK

The distributor of this communication is performing acts for which a real estate license is required. The information contained herein has been obtained from sources deemed reliable but has not been verified and no guarantee, warranty or representation, either express or implied, is made with respect to such information. Terms of sale or lease and availability are subject to change or withdrawal without notice. nmrk.com

Site Plan



For information, please contact:

Roger Oser

Senior Managing Director

t 650-358-5262

roger.oser@nmrk.com

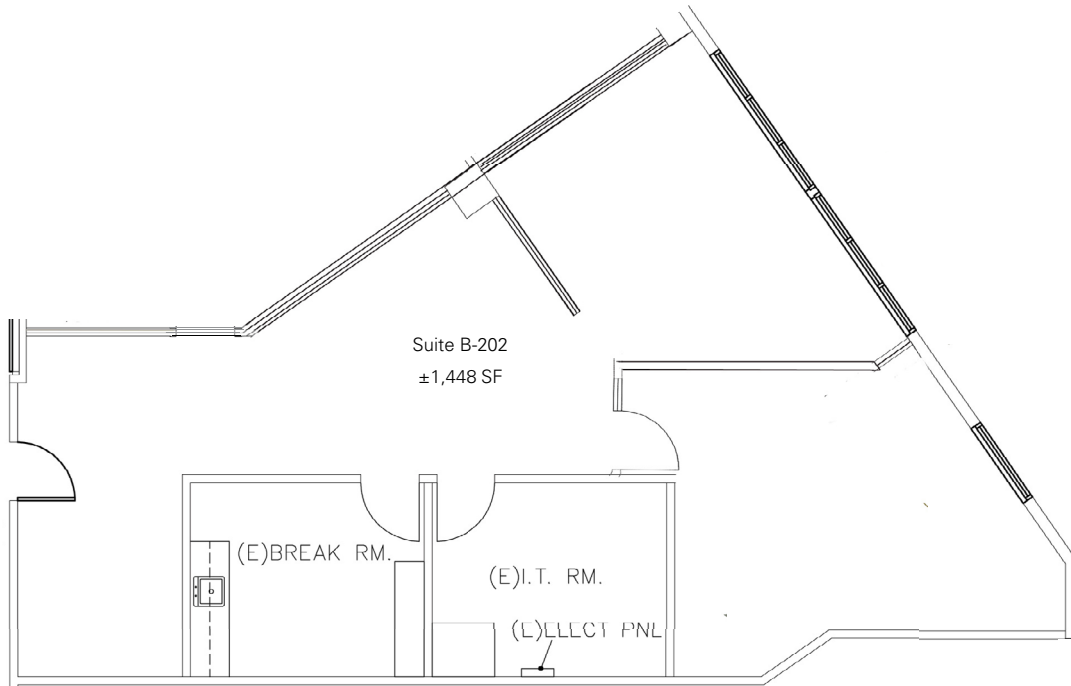
CA RE License # 00826289

nmrk.com



The distributor of this communication is performing acts for which a real estate license is required. The information contained herein has been obtained from sources deemed reliable but has not been verified and no guarantee, warranty or representation, either express or implied, is made with respect to such information. Terms of sale or lease and availability are subject to change or withdrawal without notice.

Floor Plan: Suite B-202



For information, please contact:

Roger Oser

Senior Managing Director

t 650-358-5262

roger.oser@nrmk.com

CA RE License # 00826289

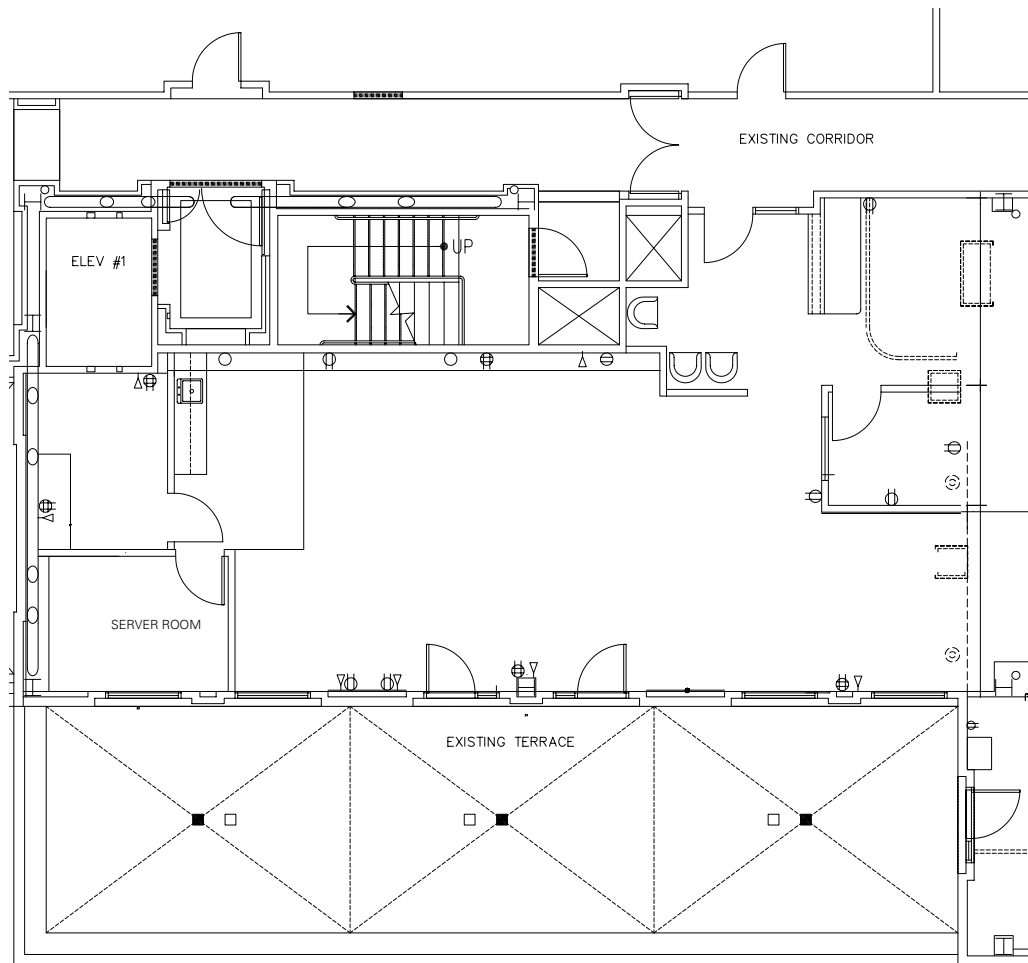
nrmk.com

NEWMARK

The distributor of this communication is performing acts for which a real estate license is required. The information contained herein has been obtained from sources deemed reliable but has not been verified and no guarantee, warranty or representation, either express or implied, is made with respect to such information. Terms of sale or lease and availability are subject to change or withdrawal without notice.

Floor Plan - Suite 205

Reception Area, Storage, Large Open Office Area, Kitchenette, Server Room
Access to Extensive Outside Patio Area



For information, please contact:

Roger Oser

Senior Managing Director

t 650-358-5262

roger.oser@nmrk.com

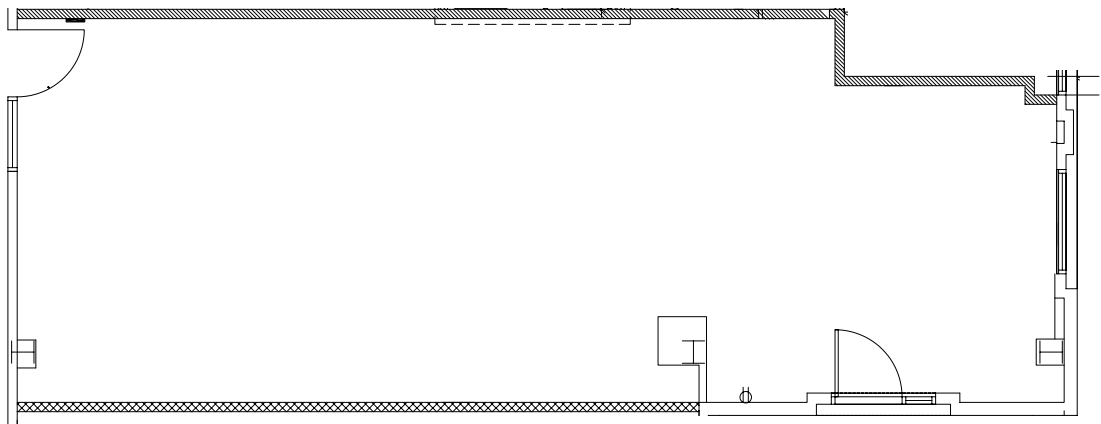
CA RE License # 00826289

nmrk.com

NEWMARK

The distributor of this communication is performing acts for which a real estate license is required. The information contained herein has been obtained from sources deemed reliable but has not been verified and no guarantee, warranty or representation, either express or implied, is made with respect to such information. Terms of sale or lease and availability are subject to change or withdrawal without notice.

Floor Plan - Suite 208



For information, please contact:

Roger Oser

Senior Managing Director

t 650-358-5262

roger.oser@nmrk.com

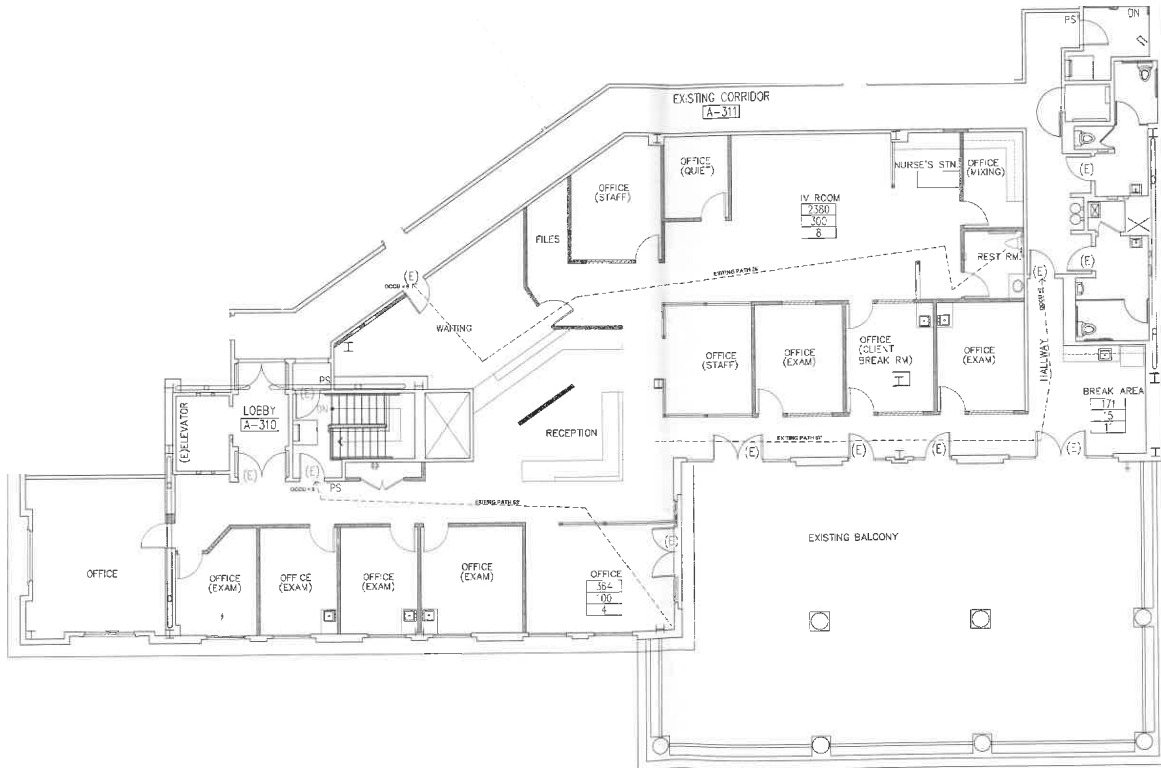
CA RE License # 00826289

nmrk.com

NEWMARK

The distributor of this communication is performing acts for which a real estate license is required. The information contained herein has been obtained from sources deemed reliable but has not been verified and no guarantee, warranty or representation, either express or implied, is made with respect to such information. Terms of sale or lease and availability are subject to change or withdrawal without notice. 16-0854

Floor Plan - Suite A-304, A-305



For information, please contact:

Roger Oser

Senior Managing Director

t 650-358-5262

roger.oser@nrmk.com

CA RE License # 00826289

nrmk.com



The distributor of this communication is performing acts for which a real estate license is required. The information contained herein has been obtained from sources deemed reliable but has not been verified and no guarantee, warranty or representation, either express or implied, is made with respect to such information. Terms of sale or lease and availability are subject to change or withdrawal without notice. 16-0854

1098 FOSTER CITY BLVD



For information, please contact:

Roger Oser

Senior Managing Director

t 650-358-5262

roger.oser@nmrk.com

CA RE License # 00826289

nmrk.com

NEWMARK

The distributor of this communication is performing acts for which a real estate license is required. The information contained herein has been obtained from sources deemed reliable but has not been verified and no guarantee, warranty or representation, either express or implied, is made with respect to such information. Terms of sale or lease and availability are subject to change or withdrawal without notice. 16-0854