

South Tampa Site

4130 W Gandy Blvd,
Tampa, FL 33611

PAD READY



**Alliant
Partners**
DEVELOPMENT

Property Overview

CONTACT FOR PRICING

Property Address: 4130 W Gandy Blvd, Tampa, FL 33611

Total Property Size: 6.3 acres

Zoned: Commercial

Property Type: Retail, Retail Drive-Thrus, or Medical



Pad Ready.

Interior Roads Completed.

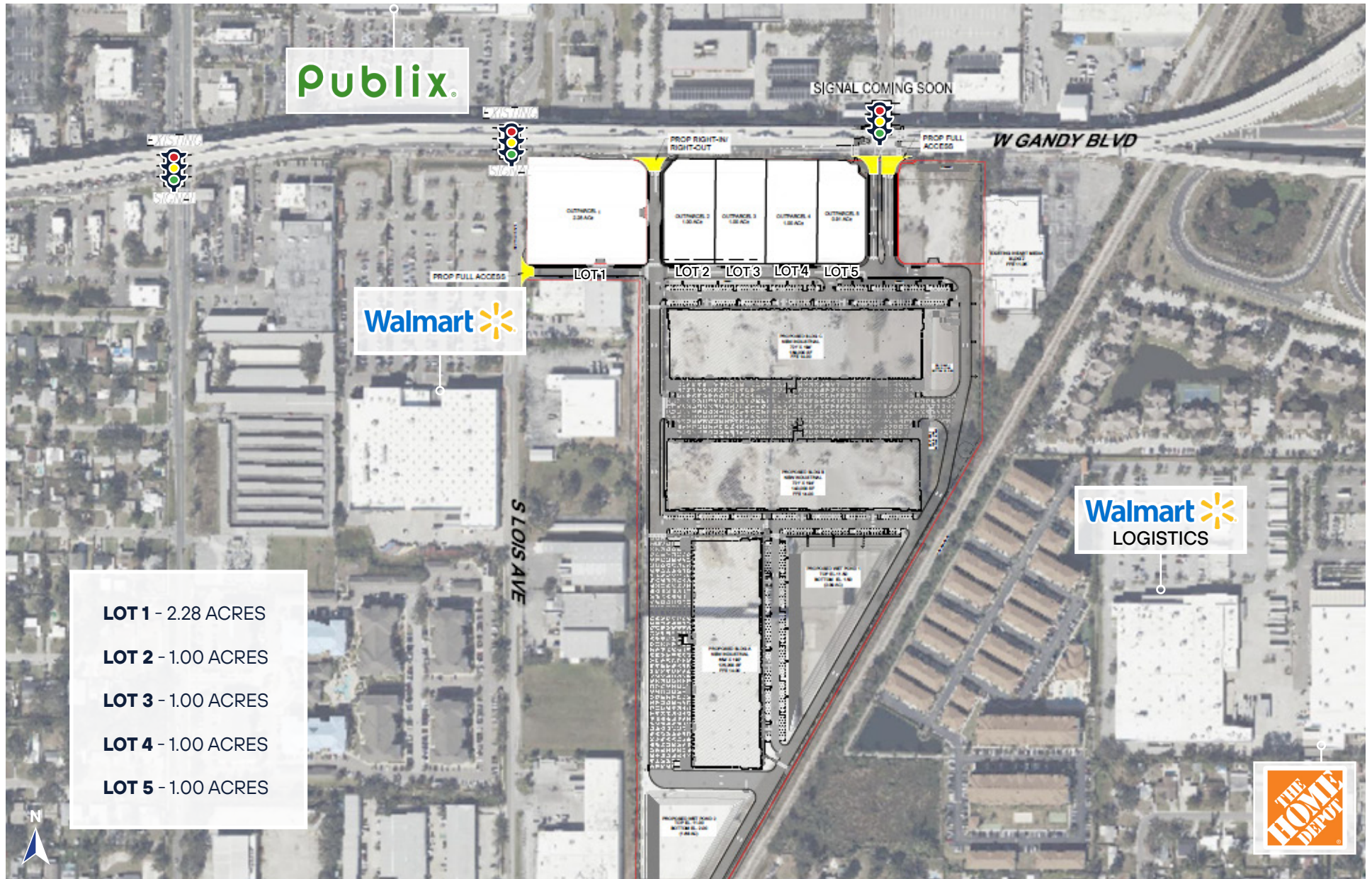
Rough Graded.

Off-Site Stormwater.

Utilities Stubbed.

Two Traffic Signals.

Site Plan



Aerial Map



Local Demographics

4130 W Gandy Blvd, Tampa, FL 33611

	1 Mile	3 Miles	5 Miles
Total Population:	18,252	80,681	141,919
Total Households:	9,163	36,020	63,101
Average Household Income:	\$113,801	\$159,038	\$155,064



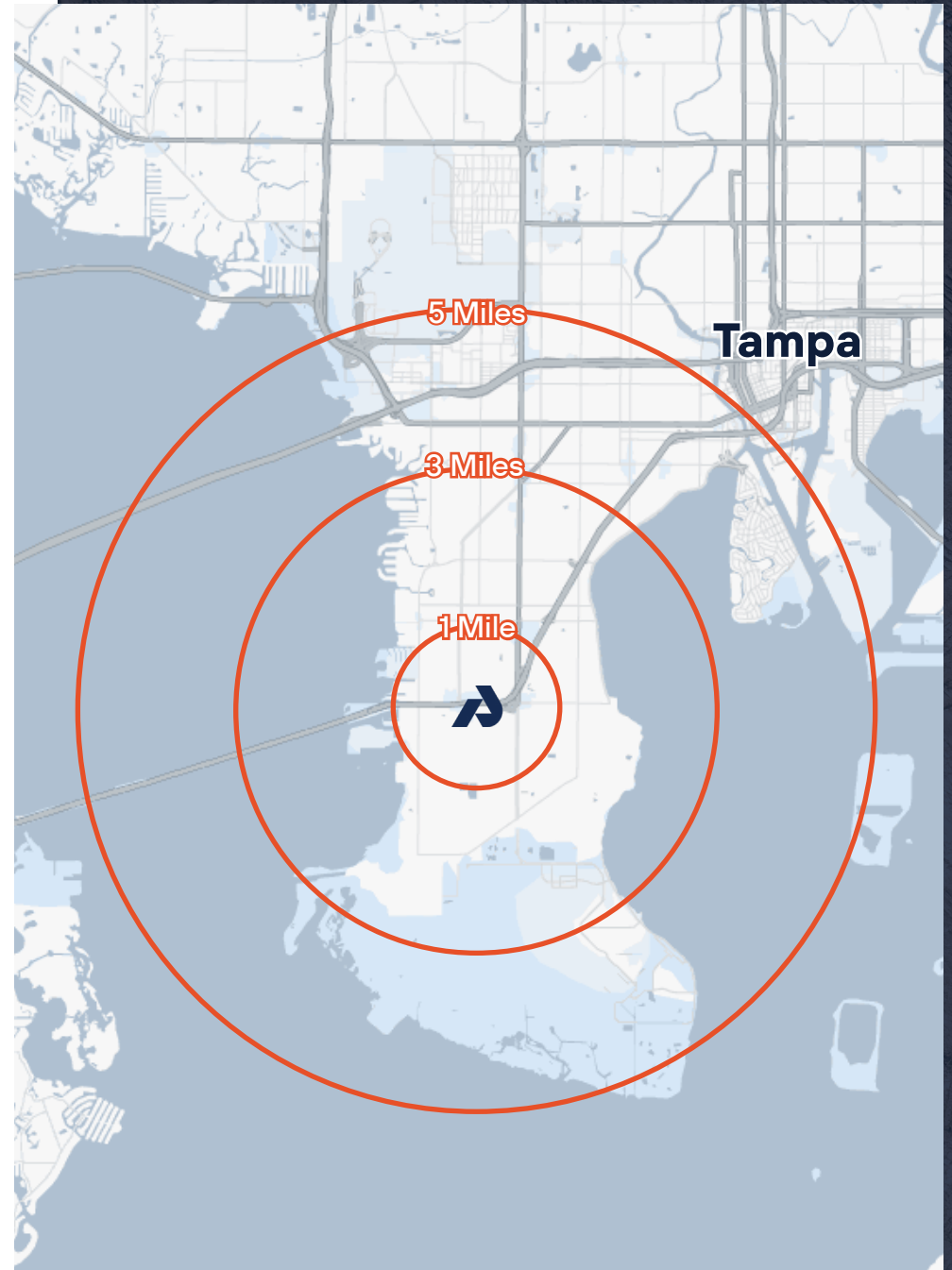
141K+

TOTAL POPULATION
(5 MILES)



\$159K+

AVERAGE HOUSEHOLD
INCOME (3 MILES)



Westshore Marina District Growth



Located just east of Westshore Marina District, one of Tampa Bay's most dynamic waterfront residential and mixed-use transformations, 4130 W Gandy Blvd sits in the heart of a corridor undergoing meaningful change.

The 52-acre Westshore Marina District is an elite bay front community featuring luxury condominiums, townhomes and marina access and retail amenities, this area now blends retail capability with waterfront lifestyle.



Spencer Muratides

Partner

spencer@apdevelopment.com

813-342-3602



**Alliant
Partners**
DEVELOPMENT