

WGC

COMPASS  
COMMERCIAL

2201 Watson Street

COMPASS



2201 Watson Street, Fort Worth, Texas

## 2201 WATSON STREET FORT WORTH, TEXAS

Size +/- 4.86 acres

Frontage Watson Street  
Approximately 200' of frontage

Zoning A-10/PD

Flood Plain None

Price Contact Broker

Excellent residential land play in storied Meadowbrook neighborhood of Fort Worth. This residential land currently zoned PD A-5

offers excellent opportunities for residential development and subdivision or for an estate lot. Utilities are to the site. Call the broker for additional details.





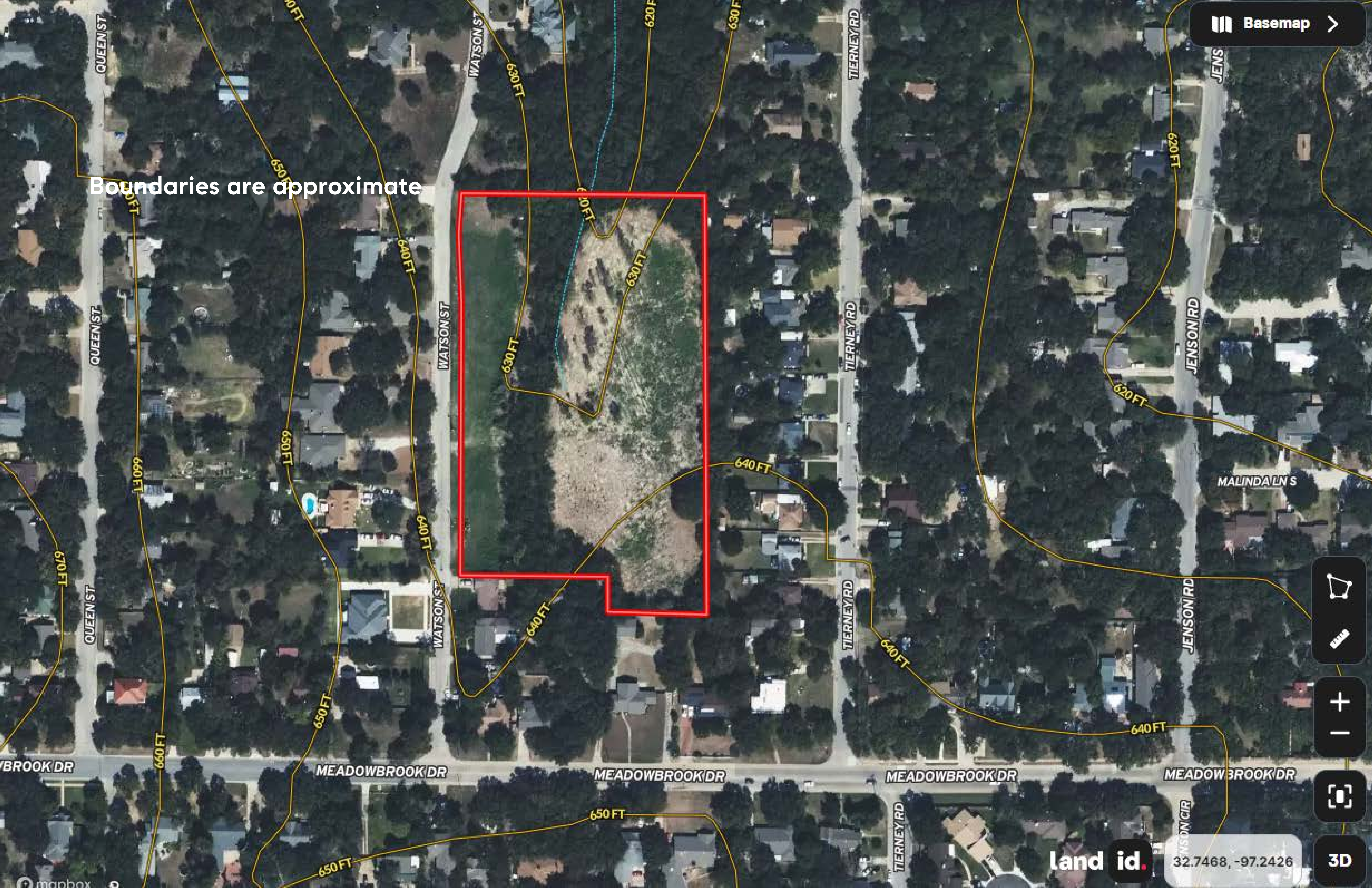
WVG  
WALSH  
WEGMAN  
GIORDANO  
Team

COMPASS  
COMMERCIAL





Boundaries are approximate

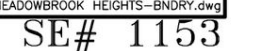


Map navigation controls including a compass, a scale bar, a zoom in (+) and zoom out (-) button, a full screen button, and a 3D view button.







[illegible]









817.312.9586

[Eric.Walsh@compass.com](mailto:Eric.Walsh@compass.com)

Compass is a licensed real estate broker. All material is intended for informational purposes only and is compiled from sources deemed reliable but is subject to errors, omissions, changes in price, condition, sale, or withdrawal without notice. No statement is made as to the accuracy of any description or measurements (including square footage). This is not intended to solicit property already listed. No financial or legal advice provided. Equal Housing Opportunity. Photos may be virtually staged or digitally enhanced and may not reflect actual property conditions.