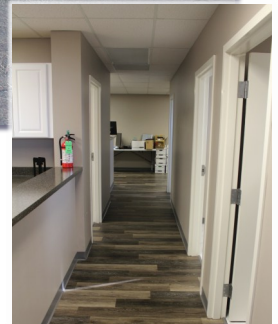
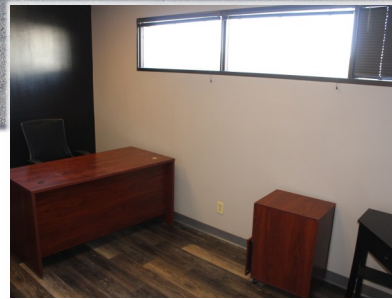
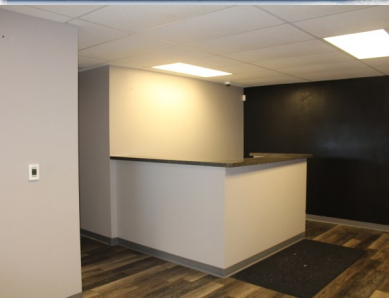


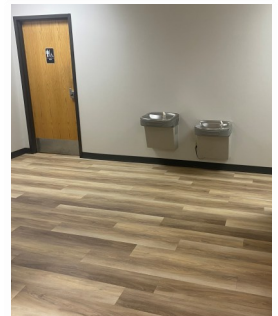
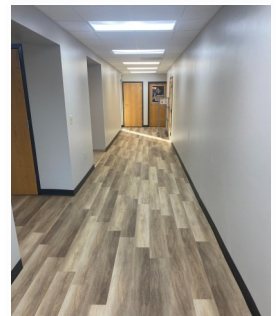
For Lease

Office Building

3701 N. St. Peters Parkway
St. Peters, MO 63376



- 17,130 SF Multi-Tenant Building on 1.77 ac lot
- Monument Signage 7 Building Signage with High-visibility from MO-94
- Two Private Dedicated Parking Lots for Tenants
- Curb cuts on Glen Park Dr. & N. St. Peters Pkwy.
- Zoned Improved Commercial (C-3)
- Updated Landscaping, Sealed & Striped Parking Lot, & Interior Finishes
- Lease:
 - ◆ Suite C1-1,195 SF Available for Lease, \$20.00 PSF, FS
 - ◆ Space includes two (2) plumbed exam rooms



Danny Wapelhorst

Vice President

Phone: (636) 970-0330

dannyw@cissellmueller.com

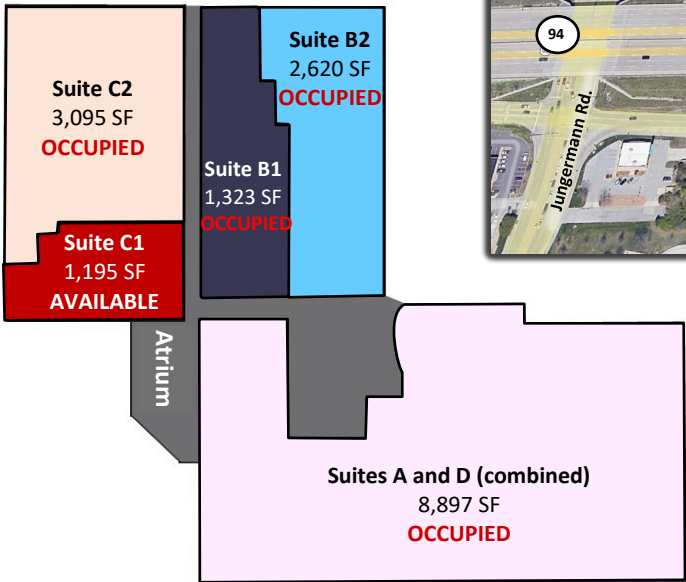


CISSELL MUELLER
COMPANY, L.L.C.

For Lease

Office Building

3701 N. St. Peters Parkway
St. Peters, MO 63376



Current Floorplan

Danny Wapelhorst
Vice President
Phone: (636) 970-0330
dannyw@cissellmueller.com

