

OFFICE SPACE AT REVITALIZED HISTORIC CAMPUS

# LINCOLN MILL | FOR LEASE



## LOCATION



1300 Meridian Street  
Huntsville, AL 35801



CALL FOR PRICING



Scan or click  
the QR code  
for availability

## PROPERTY HIGHLIGHTS:

- Prime location less than 1 mile from Downtown Huntsville square with easy access to I-565
- Located within a HUB Zone.
- State-of-the-art on-site fitness center with restrooms and showers
- On-site food and beverage options, including a coffee shop
- Spacious North and South lobbies with additional seating, perfect for casual meetings and collaboration
- Abundant surface parking for tenants and visitors



**CRUNKLETON**  
COMMERCIAL REAL ESTATE GROUP

## FOR MORE INFORMATION:

**Walker Purvis**

256-384-7606

Walker@crunkletonassociates.com

**Eric St. John, CCIM**

256-384-7603

Eric@crunkletonassociates.com

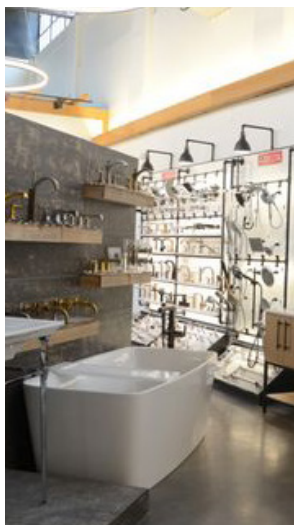
# BUILDING AMENITIES



Several suites feature stunning views of Monte Sano Mountain, Downtown Huntsville, and the state-of-the-art outdoor campus courtyard—an ideal setting for both work and relaxation.



## ONSITE RETAIL TENANTS



GLS Kitchen & Bath  
Showroom



Turbo Coffee



MedLoft Spa



SALT'S Smokehouse



High Point  
Climbing Gym

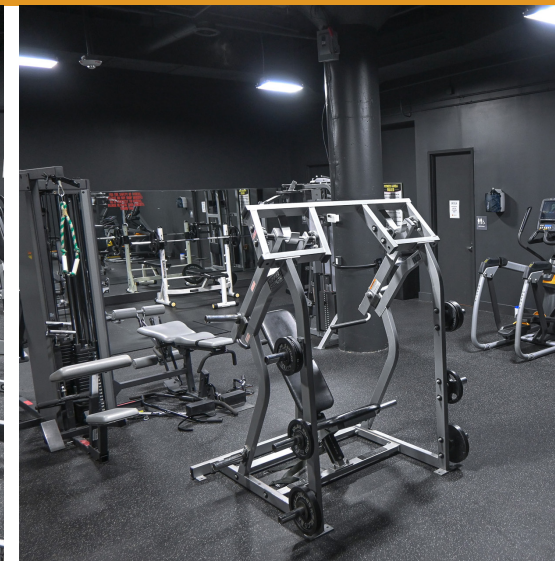
# INTERIORS



Lincoln Mill lobbies showcase tenant digital directories and upscale finishes, with strategically placed wayfinding signage throughout the property. Elevator and stair access are available on all floors.



Endless possibilities, as demonstrated by current Lincoln Mill tenants who have maximized their suite's potential.



Tenants enjoy exclusive access to a state-of-the-art fitness center, complete with restrooms and showers

# AREA MAP

