

INDU STRY

RESTAURANT/VENUE/RETAIL
±4,163 RSF + PATIO

1717 SILVER LAKE BLVD

FOR LEASE



INDUSTRYPARTNERS.COM
310 395 5151
CA BRE No. 01900833

ARAM POGOSIAN
ap@industrypartners.com
CA BRE No. 01816276

MAGUIRE PARSONS
mp@industrypartners.com
CA BRE No. 02047123

CHRIS NORHADIAN
cn@industrypartners.com
CA BRE No. 02022942

FOR LEASE

RESTAURANT/VENUE/RETAIL

1717 SILVER LAKE BLVD LOS ANGELES CA 90026

DETAILS

AVAILABLE SF

±4,163 RSF
+ Patio

LAND SF

7,665 SF

RATE

Upon Request

TERM

5-10 years

OCCUPANCY

Immediate

PARKING

15 Spaces On-Site

Restaurant/Venue/Retail space in rare Silver Lake location

FEATURES

Prime Silver Lake location; in a vibrant, walkable area near top restaurants and retail.

Versatile layout; suits retail, hospitality, or entertainment.

Rare on-site parking; 15 spaces, a major advantage in the area.

High visibility; 28,000 cars pass daily.

Historic music venue; hosted Beck, Foo Fighters, and more since 1995.

Prime branding opportunity on Silver Lake Blvd.

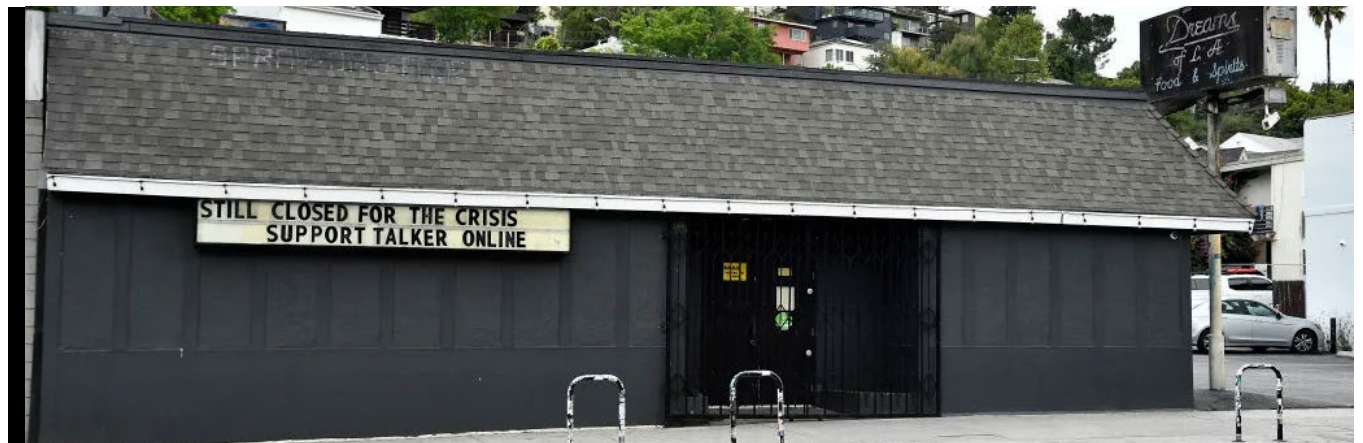
Dual access from Silver Lake Blvd and Silver Lake Dr.



No warranty or representation is made to the accuracy of the foregoing information. Terms of sale or lease are subject to change or withdrawal without notice.
©2025 INDUSTRY PARTNERS, INC.

Spaceland & Satellite Club

Formerly Spaceland & Satellite Club — a mainstay of the Silver Lake music scene for 25 years that has hosted major acts like Lady Gaga, Beck, The Killers, Arctiv Monkeys, the White Stripes and the Foo Fighters.



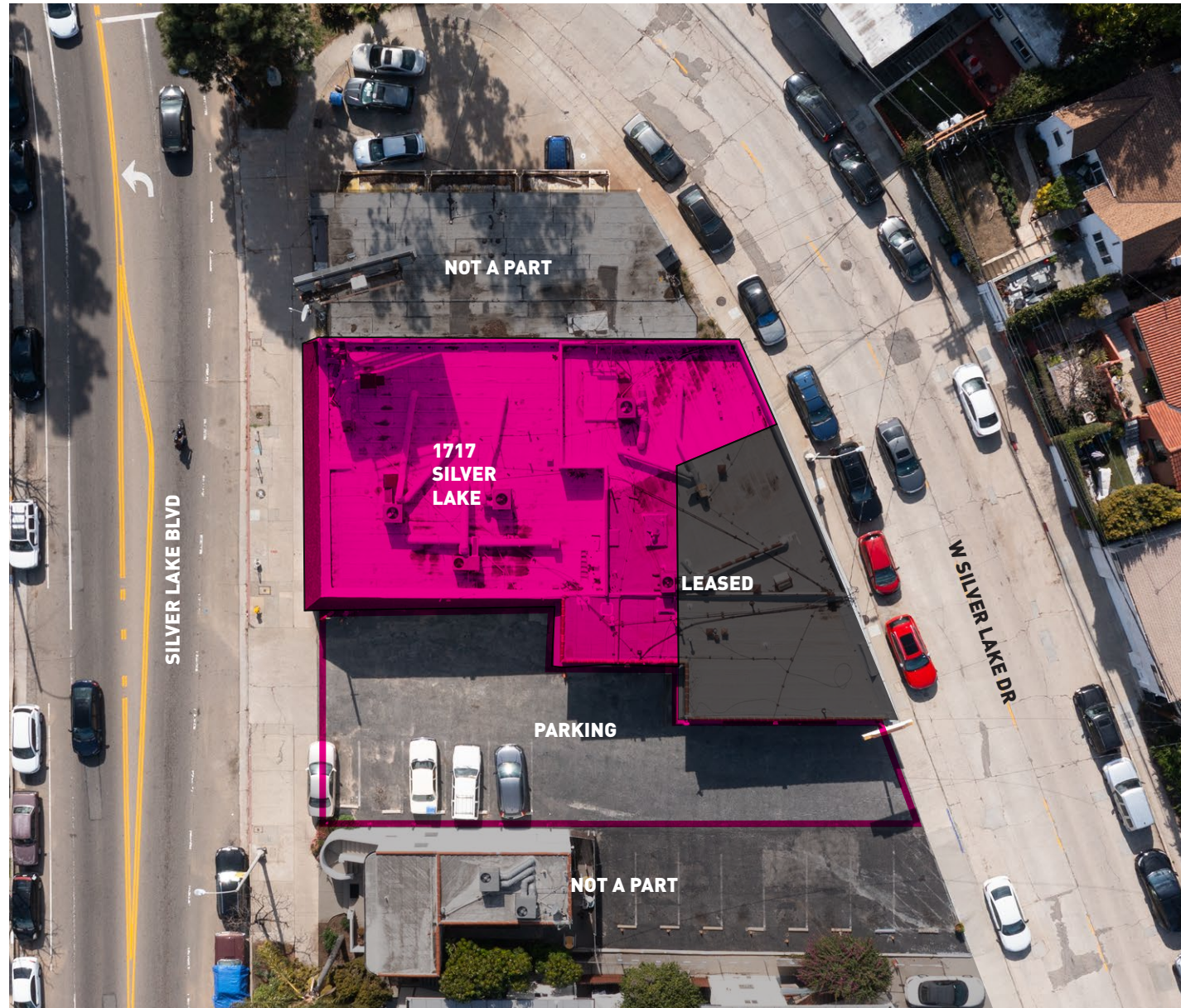
FOR LEASE

RESTAURANT/VENUE/RETAIL

1717 SILVER LAKE BLVD LOS ANGELES CA 90026

AERIAL

SITE PLAN
±4,163 RSF
+ Patio



NOT TO SCALE.
Floor plan for information purposes only.
Layout and furnishings may vary

FOR LEASE

RESTAURANT/VENUE/RETAIL

1717 SILVER LAKE BLVD LOS ANGELES CA 90026

AERIAL



About the neighborhood

Silver Lake is one of LA's most dynamic neighborhoods, known for its creative energy, walkable streets, and mix of indie boutiques, top-tier restaurants, and iconic music venues. A hub for artists, entrepreneurs, and trendsetters, it blends historic charm with a cutting-edge cultural scene.

One of Los Angeles' trendiest neighborhoods, spotlighted by Condé Nast Traveler, Vogue, Architectural Digest, Goop, and more.

WALKSCORE

81/100 'WALKER'S PARADISE'

8-MIN DRIVE TO 101 FWY

6-MIN DRIVE TO 110 FWY

10-MIN DRIVE TO DOWNTOWN LA

No warranty or representation is made to the accuracy of the foregoing information. Terms of sale or lease are subject to change or withdrawal without notice.

©2025 INDUSTRY PARTNERS, INC.

