



Keegan & Coppin
COMPANY, INC.

FOR LEASE

1450 AIRPORT BLVD.
SUITE 180
SANTA ROSA, CA

AIRPORT AREA OFFICE SPACE



Go beyond broker.

REPRESENTED BY:

SHAWN JOHNSON, MANAGING PARTNER/SIOR
LIC # 00835502 (707) 528-1400, EXT 238
SJOHNSON@KEEGANCOPPIN.COM



Keegan & Coppin
COMPANY, INC.



1450 AIRPORT BOULEVARD
SUITE 180
SANTA ROSA, CA

AIRPORT AREA OFFICE SPACE FOR LEASE

PROPERTY SUMMARY

FEATURES

Suite 180

- 8 Private Offices
- 2 Conference Rooms
- Kitchen
- Storage, IT Room, Lab and Workshop Space
- 2 Private Restrooms

SUITE SIZE

Suite 180: 4,462+/- sq ft.

LEASE RATE

\$1.55 GROSS
+ UTILITIES & INSIDE JANITORIAL

LEASE TERM

- 3-5 year lease term preferred
- Available July 1, 2025

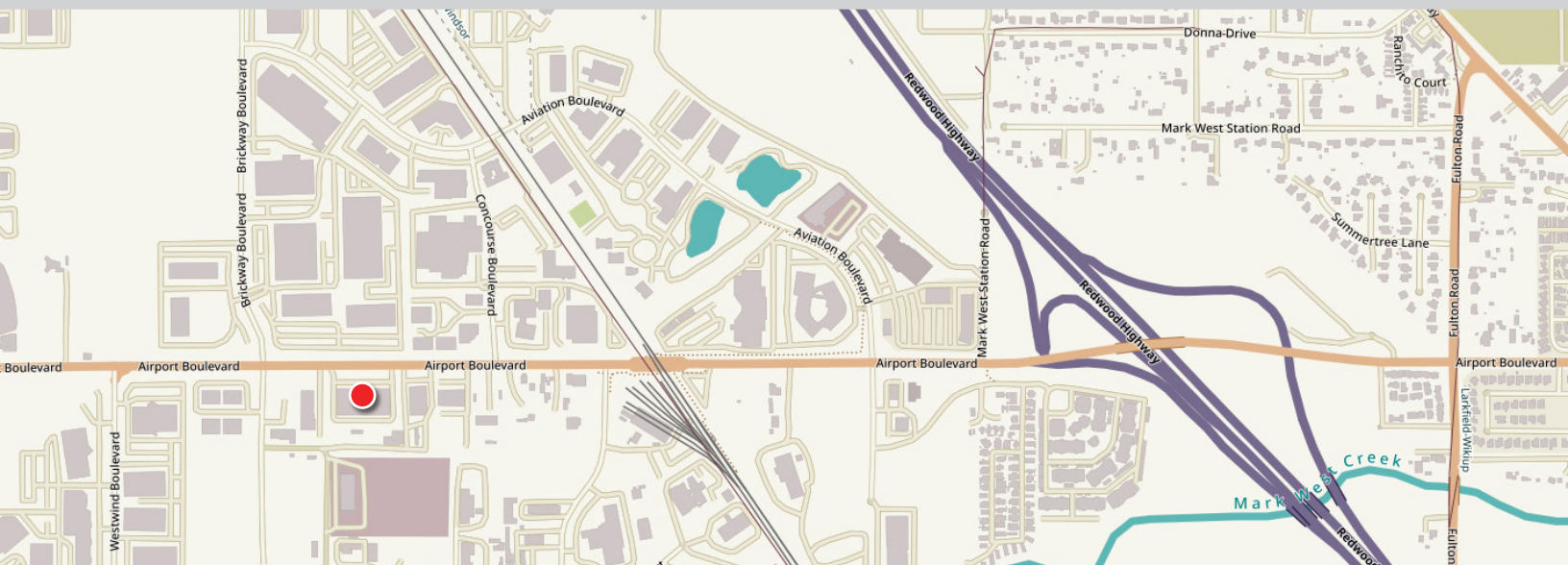
DESCRIPTION OF PREMISES

This modern two-story building provides a professional and spacious atmosphere with high quality design, improvements, and natural light. Plenty of parking is available. The suite has private restroom(s), with multiple private offices, file storage rooms, conference room, open space, direct access to the parking lot and fire sprinkler system. Signage is also available.

LOCATION OVERVIEW

This property is located in the Prestigious Charles Schulz Sonoma County Regional Airport area of Santa Rosa comprised of attractive, high quality, buildings with extensive landscaping and glass lines. Near Windsor Golf Course and the Airport Health & Fitness Club.

Excellent for professional office uses. With ample on-site parking, Zoning is MP Industrial Park. Leases are Modified Full Service excluding interior janitorial and utilities.



REPRESENTED BY: **SHAWN JOHNSON, MANAGING PARTNER/SIOR**
KEEGAN & COPPIN CO., INC.
LIC # 00835502 (707) 528-1400 EXT. 238
SJOHNSON@KEEGANCOPPIN.COM

The above information, while not guaranteed, has been secured from sources we believe to be reliable. Submitted subject to error, change or withdrawal.
An interested party should verify the status of the property and the information herein.



Keegan & Coppin
COMPANY, INC.

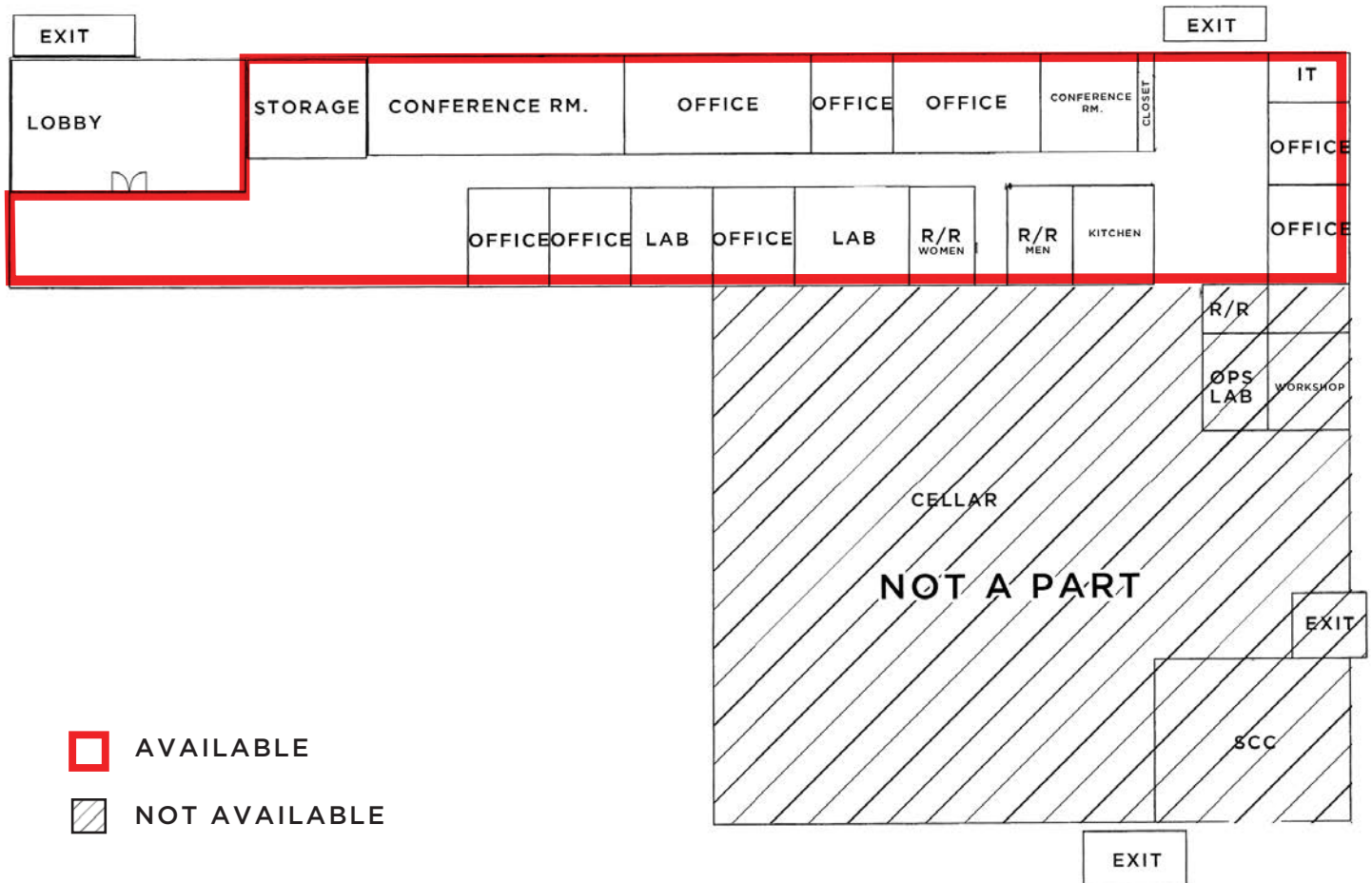


1450 AIRPORT BOULEVARD
SUITE 180
SANTA ROSA, CA

**AIRPORT AREA OFFICE
SPACE FOR LEASE**

FLOOR PLAN

SUITE 180
4,462+/- SQ. FT.



REPRESENTED BY: **SHAWN JOHNSON, MANAGING PARTNER/SIOR**
KEEGAN & COPPIN CO., INC.
LIC # 00835502 (707) 528-1400 EXT. 238
SJOHNSON@KEEGANCOPPIN.COM

The above information, while not guaranteed, has been secured from sources we believe to be reliable. Submitted subject to error, change or withdrawal.
An interested party should verify the status of the property and the information herein.



Keegan & Coppin
COMPANY, INC.



1450 AIRPORT BOULEVARD
SUITE 180
SANTA ROSA, CA

**AIRPORT AREA OFFICE
SPACE FOR LEASE**

PROPERTY PHOTOS SUITE 180



REPRESENTED BY: **SHAWN JOHNSON, MANAGING PARTNER/SIOR**
KEEGAN & COPPIN CO., INC.
LIC # 00835502 (707) 528-1400 EXT. 238
SJOHNSON@KEEGANCOPPIN.COM

The above information, while not guaranteed, has been secured from sources we believe to be reliable. Submitted subject to error, change or withdrawal.
An interested party should verify the status of the property and the information herein.



Keegan & Coppin
COMPANY, INC.



1450 AIRPORT BOULEVARD
SUITE 180
SANTA ROSA, CA

**AIRPORT AREA OFFICE
SPACE FOR LEASE**

PROPERTY PHOTOS SUITE 180



REPRESENTED BY: **SHAWN JOHNSON, MANAGING PARTNER/SIOR**
KEEGAN & COPPIN CO., INC.
LIC # 00835502 (707) 528-1400 EXT. 238
SJOHNSON@KEEGANCOPPIN.COM

The above information, while not guaranteed, has been secured from sources we believe to be reliable. Submitted subject to error, change or withdrawal.
An interested party should verify the status of the property and the information herein.



Keegan & Coppin
COMPANY, INC.



1450 AIRPORT BOULEVARD
SUITE 180
SANTA ROSA, CA

**AIRPORT AREA OFFICE
SPACE FOR LEASE**

AERIAL MAP



Keegan & Coppin Co., Inc.
1355 N Dutton Ave.
Santa Rosa, CA 95401
www.keegancoppin.com
(707) 528-1400

PRESENTED BY:

SHAWN JOHNSON
MANAGING PARTNER/SIOR
LIC # 00835502 (707) 528-1400, EXT 238
SJOHNSON@KEEGANCOPPIN.COM

The above information, while not guaranteed, has been secured from sources we believe to be reliable. Submitted subject to error, change or withdrawal. An interested party should verify the status of the property and the information herein.