



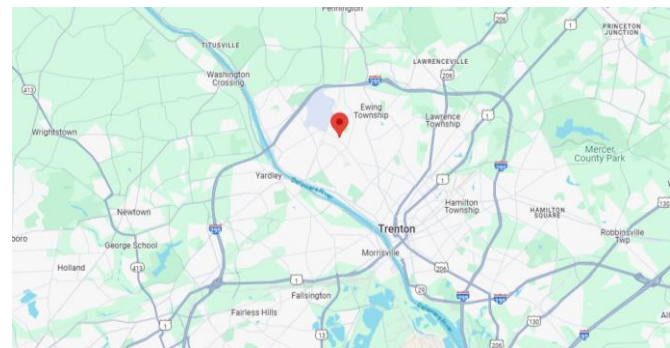
20 Scotch Road

Ewing, NJ

Available for Lease:

- 27,000 SF Office/Medical Space
- Ewing Corporate Center is a 30,000 SF 3-Story Building ideal for Medical Use due to its proximity to Capital Health Medical Center
- Elevator Access
- Parking: 110 Spaces
- Located on Scotch Road near Parkway Avenue
- Close to I-95, I-295, Routes 1, I-195, 33 & 130
- 1.5 M from Trenton-Mercer County Airport

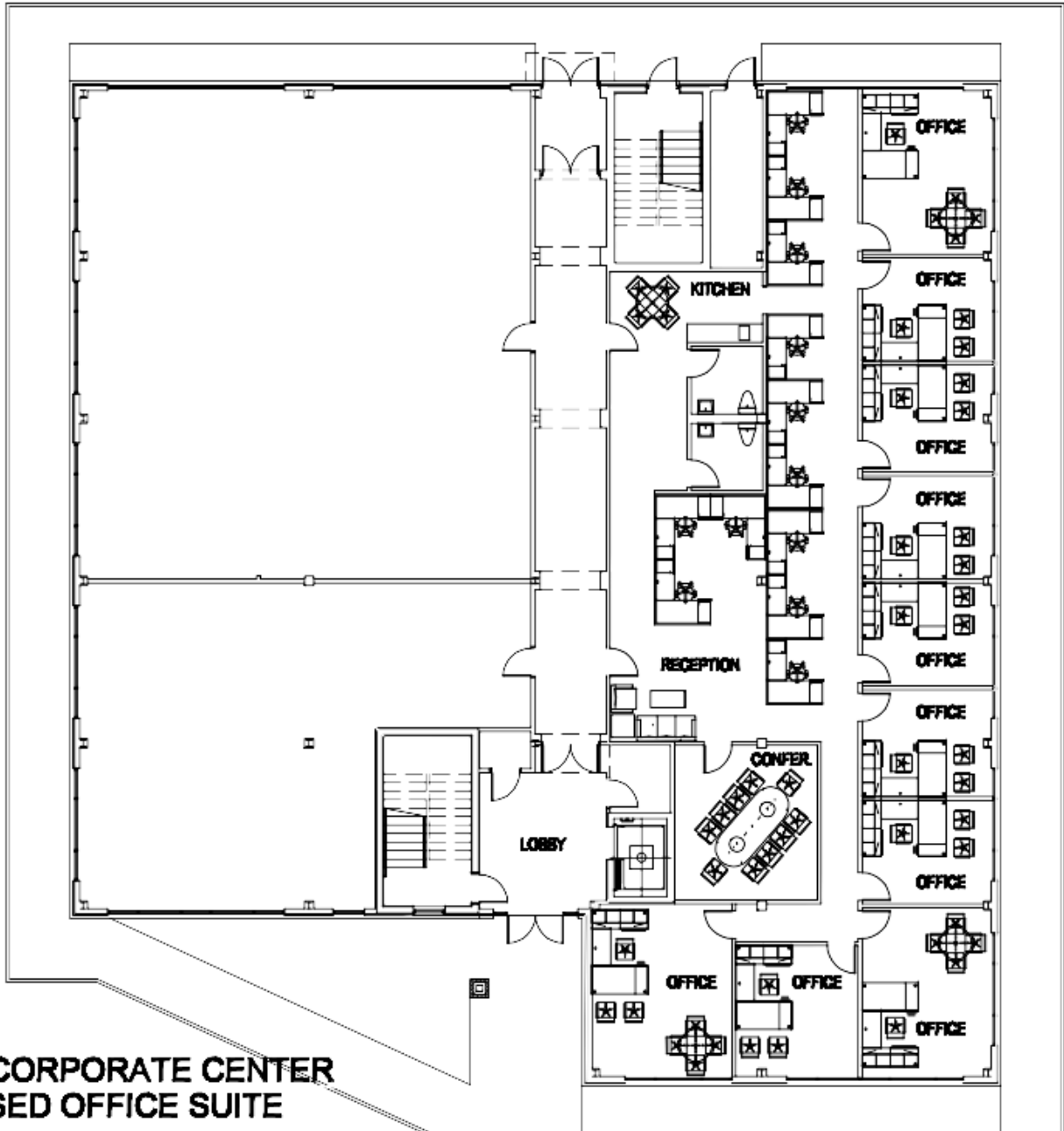
Lease Rate: \$16.50/SF
plus all Operating Expenses (Est. at \$6.35/SF)



For more information:
Gerard Fennelly

For Lease
27,000 SF
Office / Medical Space

20 Scotch Road
Ewing, NJ

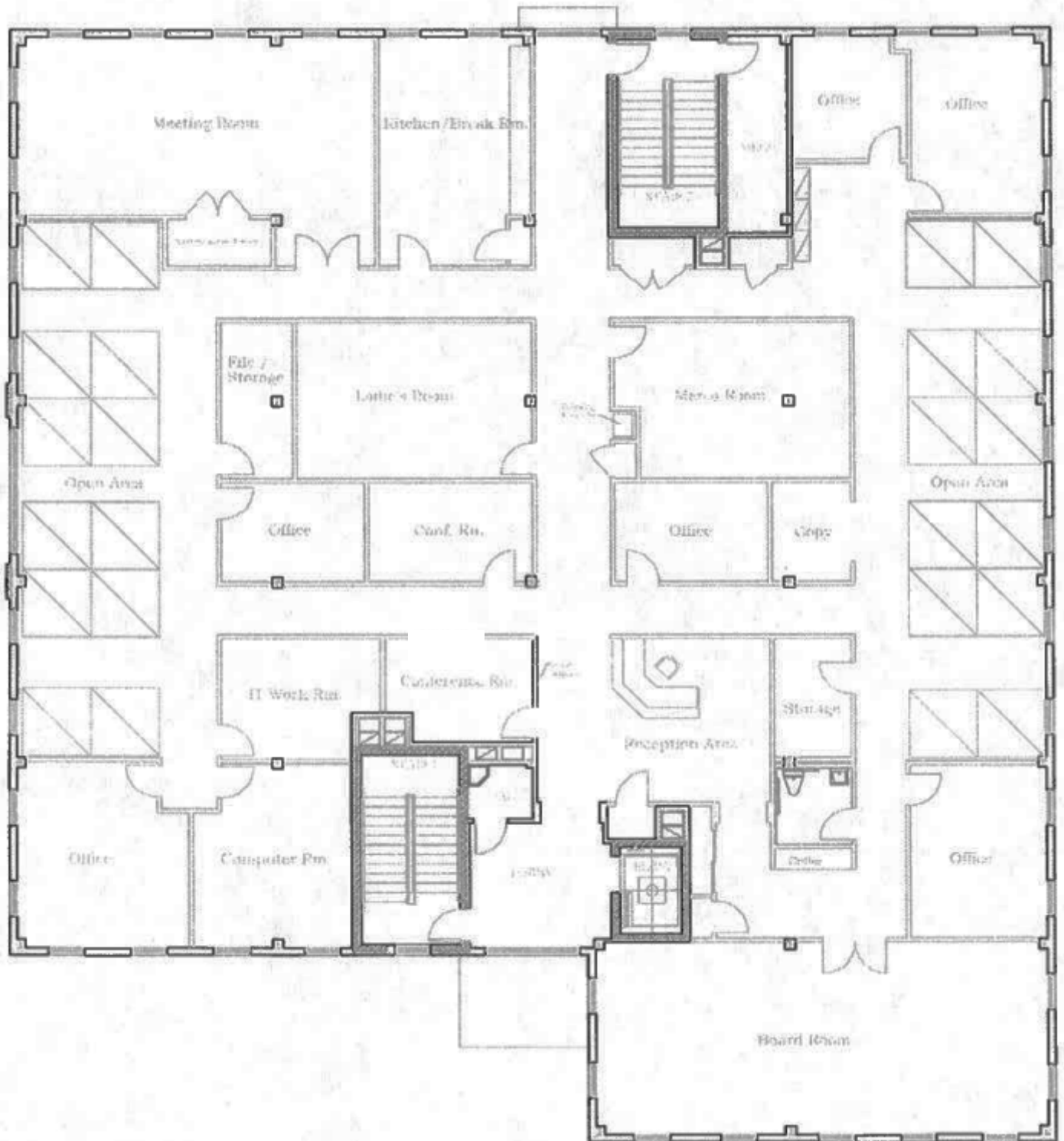


**EWING CORPORATE CENTER
PROPOSED OFFICE SUITE**

1st Floor

For Lease
27,000 SF
Office / Medical Space

20 Scotch Road
Ewing, NJ



2nd Floor

For Lease
27,000 SF
Office / Medical Space

20 Scotch Road
Ewing, NJ



3rd Floor