

14551 E. NINE MILE ROAD
EASTPOINTE, MICHIGAN

INDUSTRIAL FOR SALE
13,138 Square Feet Available



**SIGNATURE
ASSOCIATES**
KNOW SIGNATURE | KNOW RESULTS

EXCELLENT MANUFACTURING BUILDING



PROPERTY FEATURES

- 13,138 square feet available
- 2,000 square feet office
- 21' clear height
- (3) 10' x 14', 10' x 12' grade level doors
- (9) cranes: (2) 15-ton, (1) 5-ton, (1) 3-ton, (1) 2-ton, (4) JIB
- 25HP compressor with air lines throughout
- Sale Price: \$695,000 (\$52.90/sq. ft.)



For more information, please contact:

JOE STACK
(248) 359 0615
jstack@signatureassociates.com

CHRIS MONSOUR
(248) 948 0107
cmonsour@signatureassociates.com

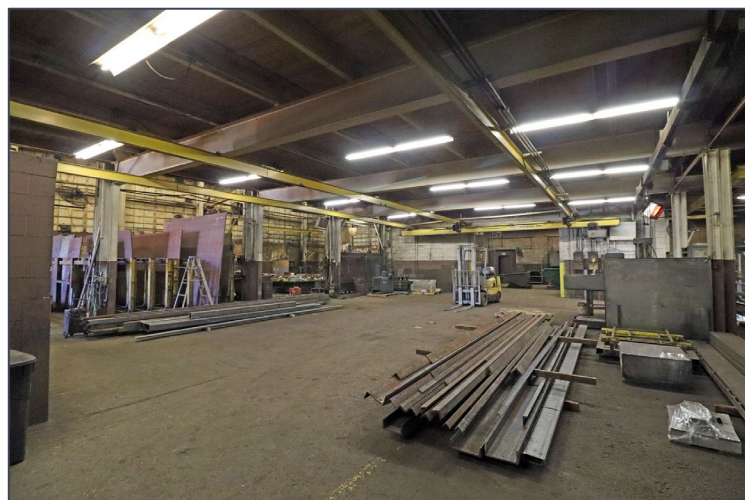
SIGNATURE ASSOCIATES
One Towne Square, Suite 1200
Southfield, MI 48076
www.signatureassociates.com

14551 E. Nine Mile Road – Eastpointe, Michigan

Industrial For Sale

13,138
Square Feet
AVAILABLE

Interior Photos



For more information, please contact:

JOE STACK
(248) 359 0615
jstack@signatureassociates.com

CHRIS MONSOUR
(248) 948 0107
cmonsour@signatureassociates.com

SIGNATURE ASSOCIATES
One Towne Square, Suite 1200
Southfield, MI 48076
www.signatureassociates.com

Information is subject to verification and no liability for errors or omissions is assumed. Price is subject to change and listing withdrawal.

14551 E. Nine Mile Road – Eastpointe, Michigan

Industrial For Sale

13,138
Square Feet
AVAILABLE

Additional Photos



For more information, please contact:

JOE STACK
(248) 359 0615
jstack@signatureassociates.com

CHRIS MONSOUR
(248) 948 0107
cmonsour@signatureassociates.com

SIGNATURE ASSOCIATES
One Towne Square, Suite 1200
Southfield, MI 48076
www.signatureassociates.com

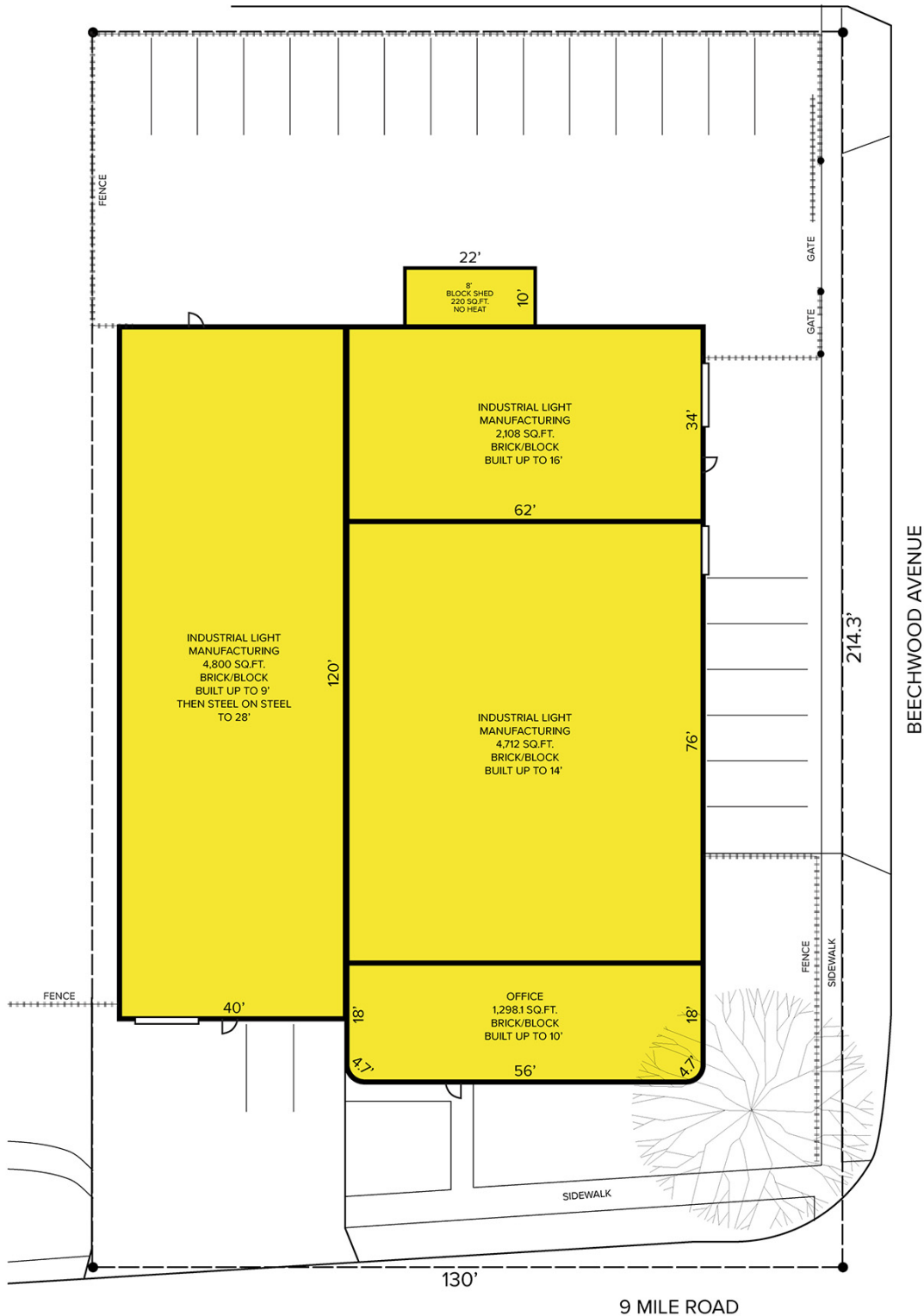
Information is subject to verification and no liability for errors or omissions is assumed. Price is subject to change and listing withdrawal.

14551 E. Nine Mile Road – Eastpointe, Michigan

Industrial For Sale

13,138
Square Feet
AVAILABLE

Site Plan



For more information, please contact:

JOE STACK
(248) 359 0615
jstack@signatureassociates.com

CHRIS MONSOUR
(248) 948 0107
cmonsour@signatureassociates.com

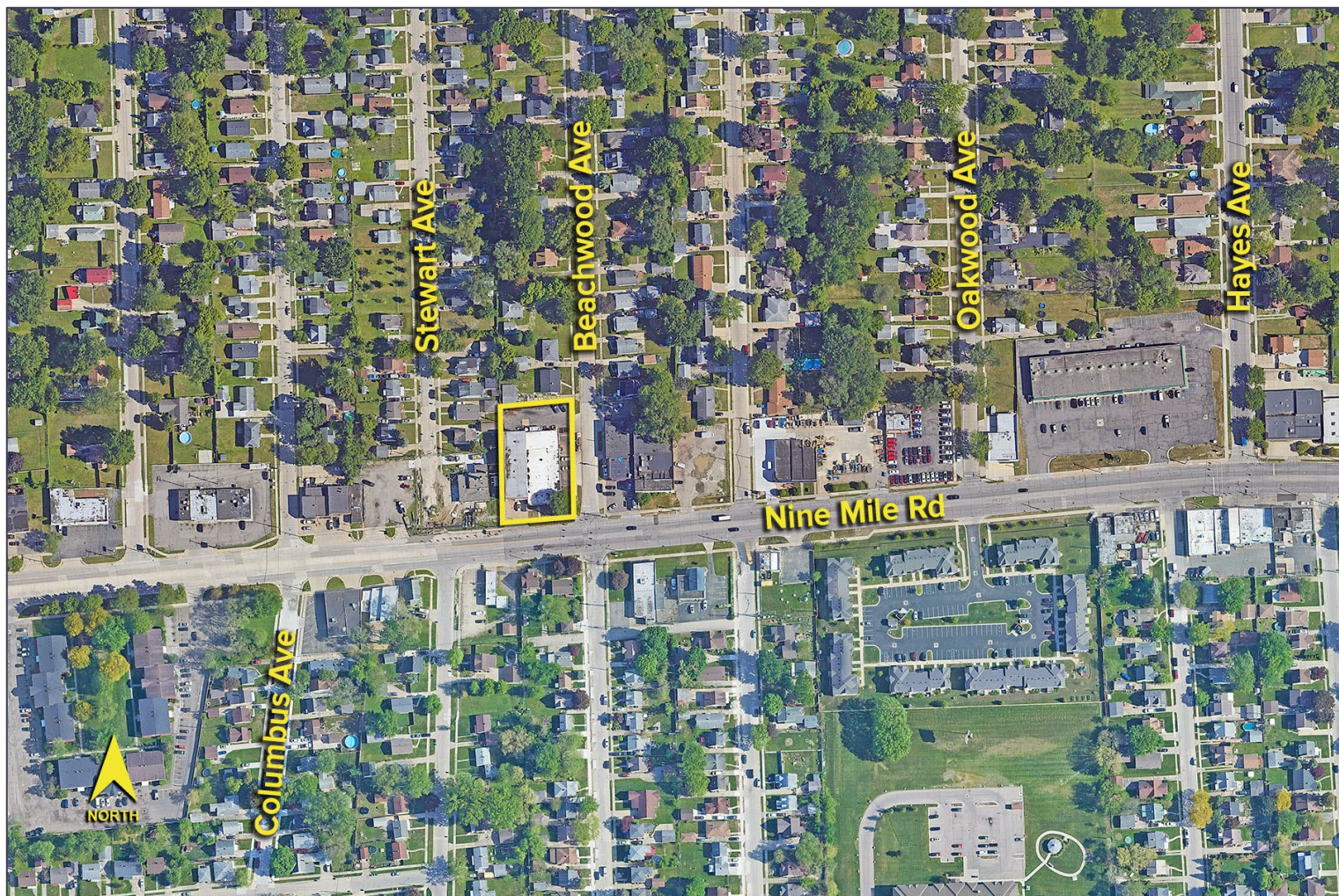
SIGNATURE ASSOCIATES
One Towne Square, Suite 1200
Southfield, MI 48076
www.signatureassociates.com

14551 E. Nine Mile Road – Eastpointe, Michigan

Industrial For Sale

13,138
Square Feet
AVAILABLE

Aerial



For more information, please contact:

JOE STACK
(248) 359 0615
jstack@signatureassociates.com

CHRIS MONSOUR
(248) 948 0107
cmonsour@signatureassociates.com

SIGNATURE ASSOCIATES
One Towne Square, Suite 1200
Southfield, MI 48076
www.signatureassociates.com

Information is subject to verification and no liability for errors or omissions is assumed. Price is subject to change and listing withdrawal.