

ATLANTIC BLVD ST. JOHNS BLUFF

LEASE

3.8 AC IL Outdoor. Storage Facility

1712 OGILVIE PARK LN
Jacksonville, FL 32246

PRESENTED BY:

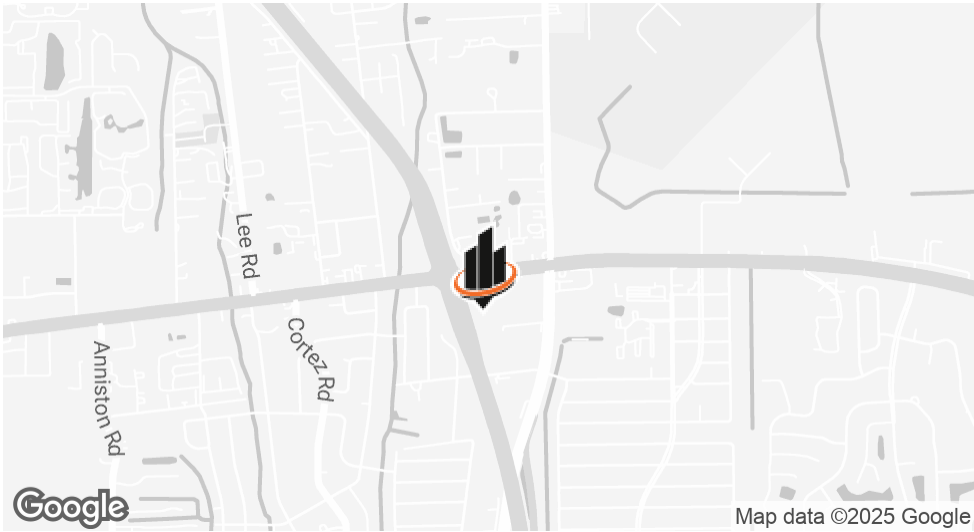
ROBERT LAWRENCE
O: 904.281.1990
rlawrence@svn.com
FL #SL621544

ANTHONY MIGLIORE
O: 904.421.8523
anthony.migliore@svn.com

COLIN NICHOLSON III, CCIM
O: 904.281.1990
cnicholson@svn.com



PROPERTY SUMMARY



OFFERING SUMMARY

LEASE RATE:	\$20,000.00 per month (MG)
LOT SIZE:	168,258 SF
BUILDING SIZE:	12,000 SF
ZONING	IL (LIGHT INDUSTRIAL)
TRAFFIC I-295	85,500 PER DAY
TRAFFIC ATLANTIC BLVD	65,000 PER DAY

PROPERTY DESCRIPTION

Strategically positioned with direct I-295 access (AADT 85,500), this 3.87-acre light industrial (IL) property offers unmatched visibility and convenience in a high-demand location. Ideal for storage, logistics, or distribution operations, the site features dual gated entries from Atlantic Blvd (AADT 65,000) and Teresa St, ensuring easy ingress/egress.

Property Highlights:

- Premium Highway Exposure - Prime northbound I-295 frontage with high-impact signage potential
- Enhanced Security - Double-gated access, including a remote-controlled sliding gate with keypad entry
- On-Site Infrastructure - +/-12,000 SF operational facility with office space, dispatch station, storage, and repair bay

ROBERT LAWRENCE
O: 904.281.1990
rlawrence@svn.com
FL #SL621544

ANTHONY MIGLIORE
O: 904.421.8523
anthony.migliore@svn.com

COLIN NICHOLSON III, CCIM
O: 904.281.1990
cnicholson@svn.com

ADDITIONAL PHOTOS



ROBERT LAWRENCE

O: 904.281.1990

rlawrence@svn.com

FL #SL621544

ANTHONY MIGLIORE

O: 904.421.8523

anthony.migliore@svn.com

COLIN NICHOLSON III, CCIM

O: 904.281.1990

cnicholson@svn.com

ADDITIONAL PHOTOS



ROBERT LAWRENCE

O: 904.281.1990
rlawrence@svn.com
FL #SL621544

ANTHONY MIGLIORE

O: 904.421.8523
anthony.migliore@svn.com

COLIN NICHOLSON III, CCIM

O: 904.281.1990
cnicholson@svn.com

ADDITIONAL PHOTOS



ROBERT LAWRENCE
O: 904.281.1990
rlawrence@svn.com
FL #SL621544

ANTHONY MIGLIORE
O: 904.421.8523
anthony.migliore@svn.com

COLIN NICHOLSON III, CCIM
O: 904.281.1990
cnicholson@svn.com

1712 OGILVIE PARK LN | Jacksonville, FL 32246

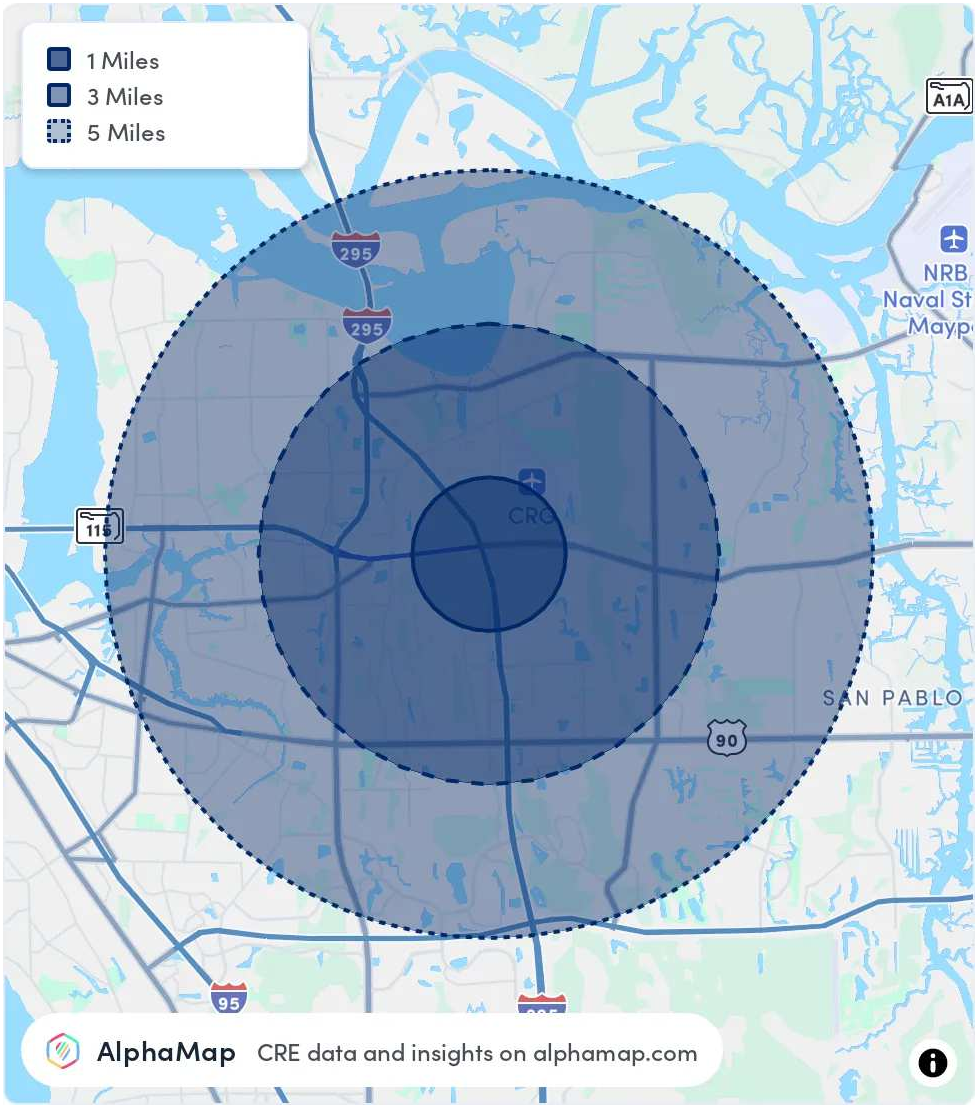
SVN | FIRST COAST COMMERCIAL REAL ESTATE SPECIALISTS

AREA ANALYTICS

POPULATION	1 MILE	3 MILES	5 MILES
TOTAL POPULATION	10,400	83,161	222,240
AVERAGE AGE	39	38	39
AVERAGE AGE (MALE)	37	37	38
AVERAGE AGE (FEMALE)	40	39	40

HOUSEHOLD & INCOME	1 MILE	3 MILES	5 MILES
TOTAL HOUSEHOLDS	3,909	32,173	88,381
PERSONS PER HH	2.7	2.6	2.5
AVERAGE HH INCOME	\$72,321	\$82,518	\$93,954
AVERAGE HOUSE VALUE	\$235,948	\$278,302	\$322,830
PER CAPITA INCOME	\$26,785	\$31,737	\$37,581

Map and demographics data derived from AlphaMap

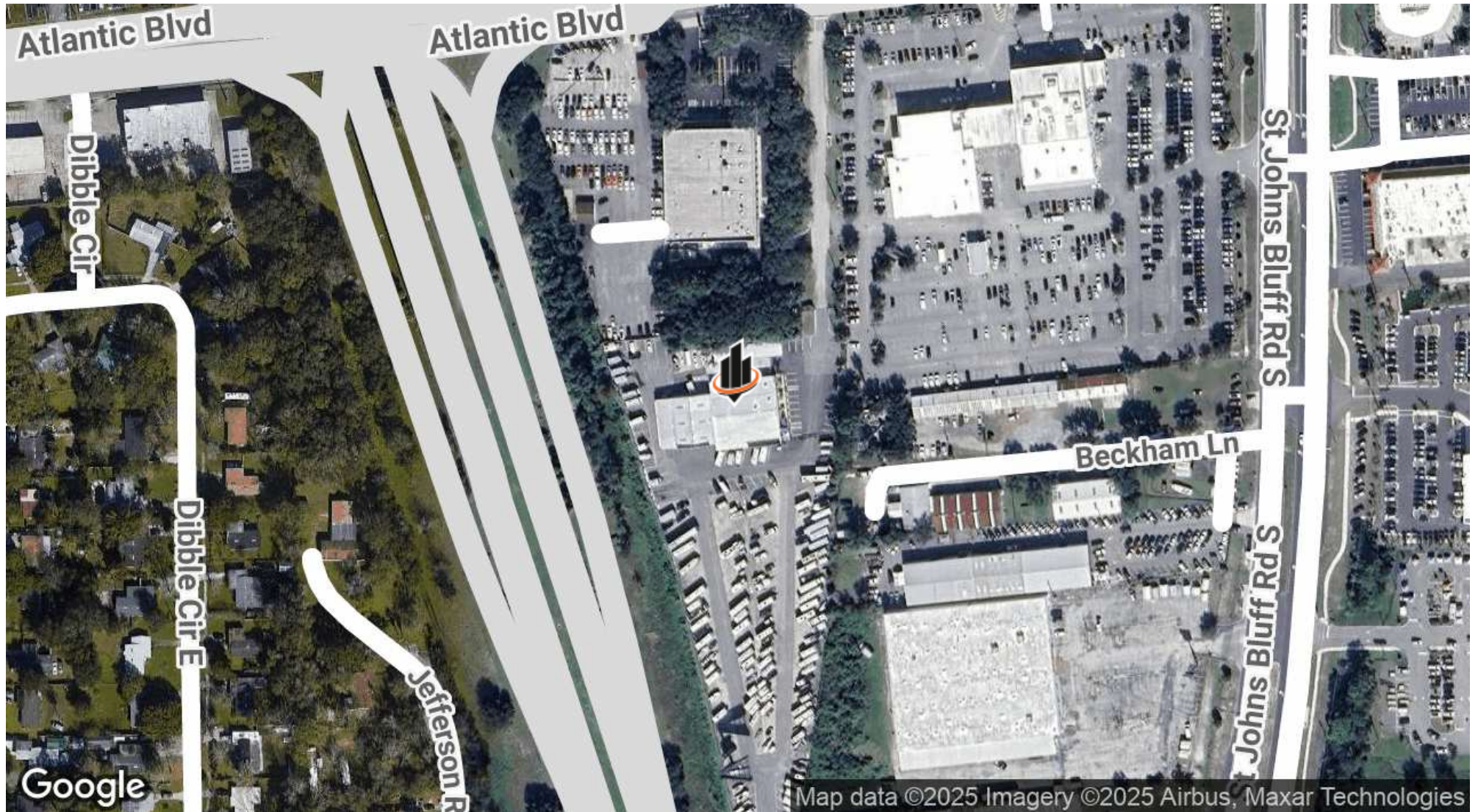


ROBERT LAWRENCE
O: 904.281.1990
rlawrence@svn.com
FL #SL621544

ANTHONY MIGLIORE
O: 904.421.8523
anthony.migliore@svn.com

COLIN NICHOLSON III, CCIM
O: 904.281.1990
cnicholson@svn.com

LOCATION MAP



ROBERT LAWRENCE
O: 904.281.1990
rlawrence@svn.com
FL #SL621544

ANTHONY MIGLIORE
O: 904.421.8523
anthony.migliore@svn.com

COLIN NICHOLSON III, CCIM
O: 904.281.1990
cnicholson@svn.com

JACKSONVILLE, FL



HIGHLIGHTS:

- Twenty-two miles of beaches, 1,100 miles of shoreline
- Largest urban park system in the country with 80,000 acres
- 40 golf courses
- Historical landmarks
- Culture and entertainment
- 270 average days of sunshine per year
- One of only 17 U.S. strategic ports on-call to move military cargo

AREA INFORMATION

One of Florida's most historic cities, first founded by European settlers back 1562. Jacksonville is rich with old Florida history, Civil War history, Civil Rights history, and Southern Rock history. Jacksonville's Downtown is one of the oldest in the state and packed with architectural gems from the early 1900's. Museums dedicated to the African American story, museums featuring the history of our beaches and a museum dedicated to the history of the biggest and most historic park, the Timucuan Ecological and Historic Preserve.

The final 35 miles of the St. Johns River runs through Jacksonville, the largest city by area in the United States, with a population of over one million. Much of the economic base of Jacksonville depends on the river: Northeast Florida's strong military presence operates on the river and 18,000,000 tons of goods are shipped in an out of Jacksonville annually.

The military presence also has a significant economic impact on the region that provides stability and diversity within the local community. Area military installations such as Naval Air Station Jacksonville, Naval Station Mayport, Kings Bay Naval Base, Camp Blanding Joint Training Center, Naval Aviation Depot Jacksonville and Marine Corps Blount Island Command provide employment to more than 50,000 active duty, reserve and civilian men and women.

There's little doubt the St. Johns River is the trade engine that drives Jacksonville. While its economic impact may be hard to quantify, the peripheral industries the river supports and affects are abundant.

ROBERT LAWRENCE

O: 904.281.1990

rlawrence@svn.com

FL #SL621544

ANTHONY MIGLIORE

O: 904.421.8523

anthony.migliore@svn.com

COLIN NICHOLSON III, CCIM

O: 904.281.1990

cnicholson@svn.com