

**OFFICE
FOR LEASE**

12,900 SF
Full Building

HIGHLY
CREATIVE

Click to view
360 Panoramic
Footage


TRANSWESTERN
REAL ESTATE
SERVICES

420 BRYANT STREET

420 Bryant Street, San Francisco, CA - Rincon/South Beach Submarket



Building Amenities:

- 2 Floors plus Open Mezzanine
- Primarily Creative Open Plan
- Full Building Opportunity
- 9 Conference Rooms
- Hardwood Floors
- Exposed Timber Ceilings
- Board Form Concrete
- Skylights
- Fantastic SOMA Location
- Steps From South Park
- Available 8/1/2022
- Asking Rate Mid \$60's IG

Leasing Information:

Brian McCarthy
415.489.1753
brian.mccarthy@transwestern.com

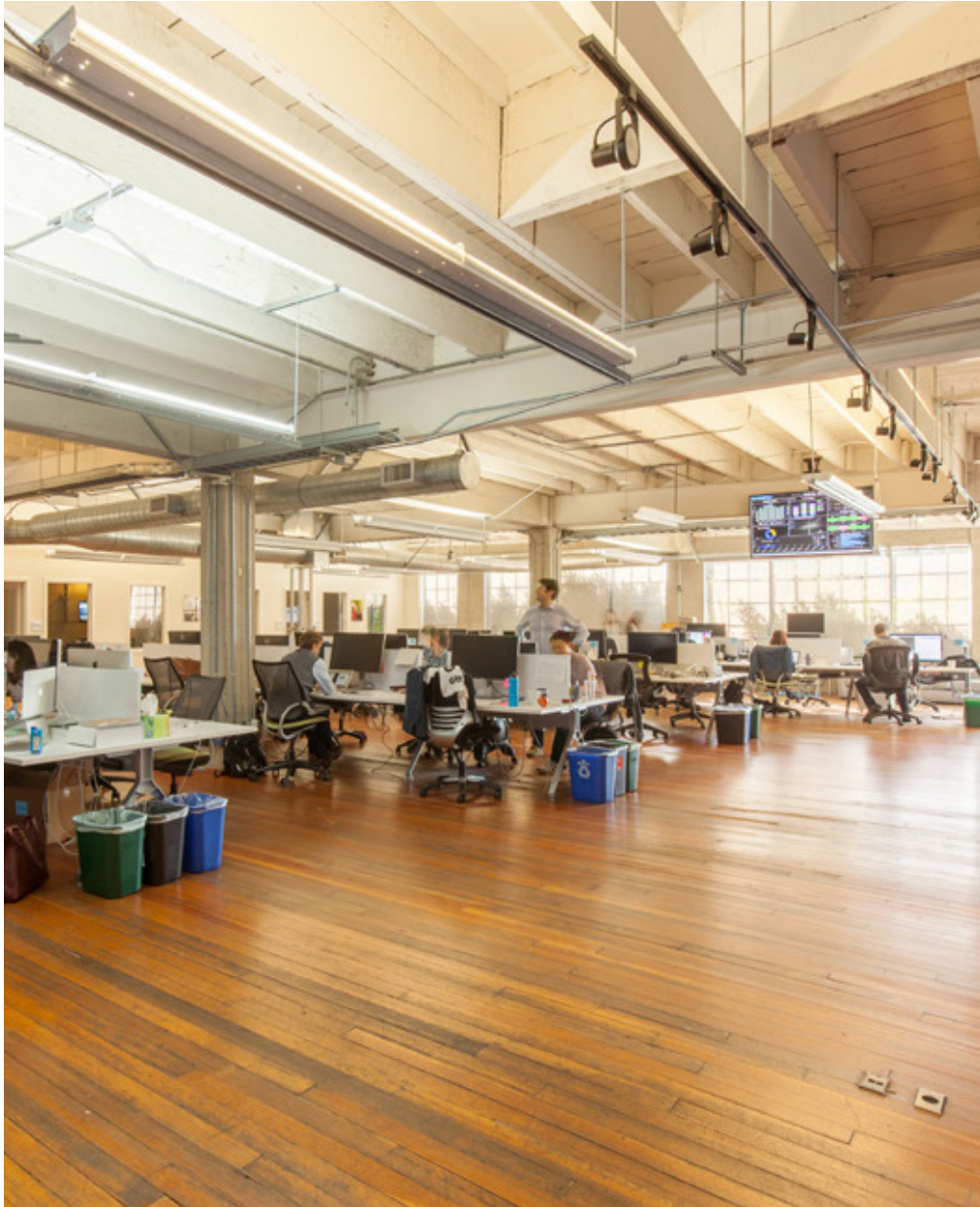
Maddie Meyersieck
415.489.1757
maddie.meyersieck@transwestern.com

Mike McCarthy
415.489.1756
mike.mccarthy@transwestern.com

The information provided herein was obtained from sources believed reliable; however, Transwestern makes no guarantees, warranties or representations as to the completeness of accuracy thereof. The presentation of this property is submitted subject to errors, omissions, change of price or conditions, prior to sale or lease, or withdrawal without notice.
Copyright © 2021 Transwestern.

420 BRYANT STREET

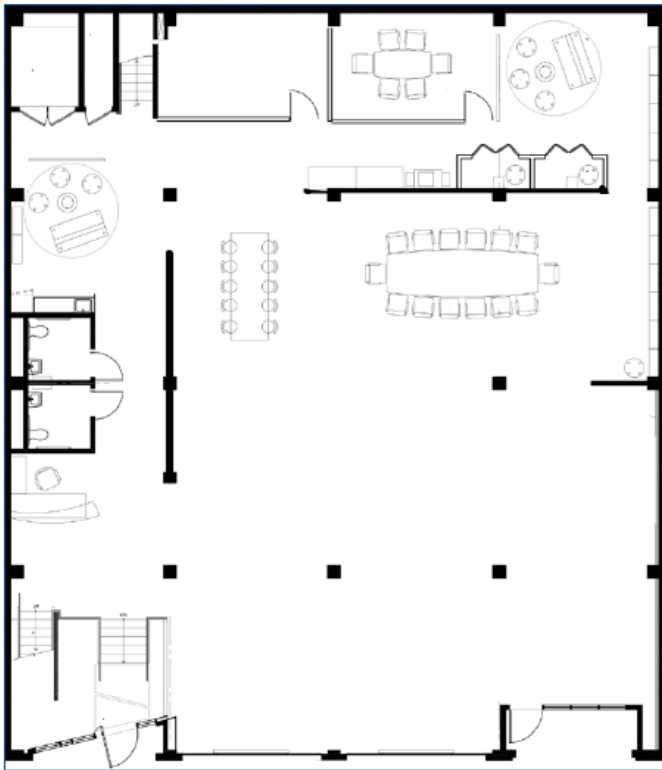
420 Bryant Street, San Francisco, CA - Rincon/South Beach Submarket



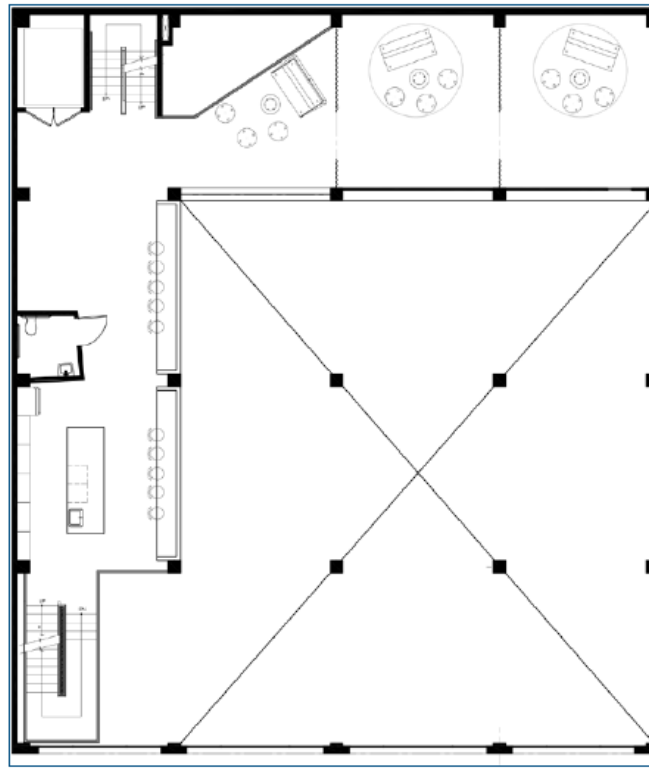
420 BRYANT STREET

420 Bryant Street, San Francisco, CA - Rincon/South Beach Submarket

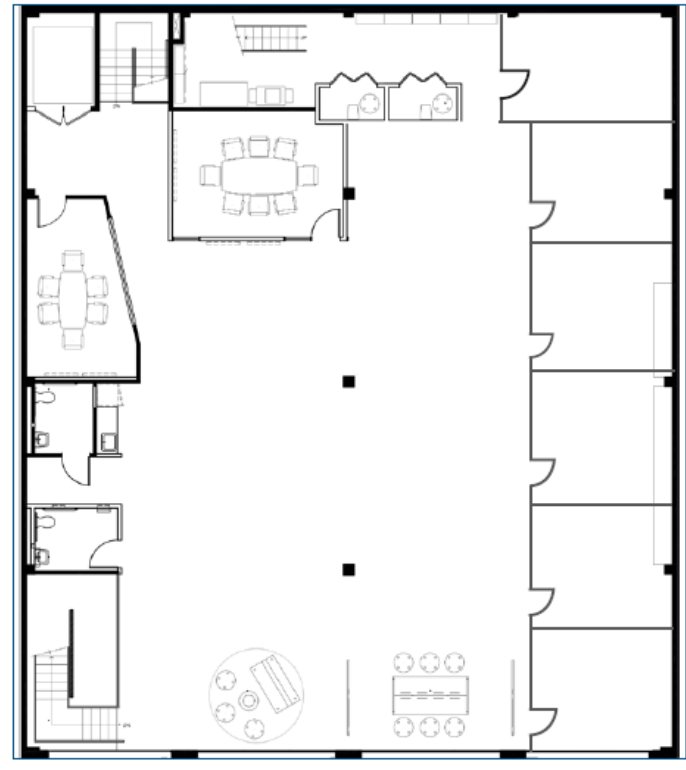
FIRST FLOOR



SECOND FLOOR



THIRD FLOOR



Leasing Information:

Brian McCarthy

415.489.1753

brian.mccarthy@transwestern.com

Maddie Meyersieck

415.489.1757

maddie.meyersieck@transwestern.com

Mike McCarthy

415.489.1756

mike.mccarthy@transwestern.com

The information provided herein was obtained from sources believed reliable; however, Transwestern makes no guarantees, warranties or representations as to the completeness of accuracy thereof. The presentation of this property is submitted subject to errors, omissions, change of price or conditions, prior to sale or lease, or withdrawal without notice.
Copyright © 2021 Transwestern.