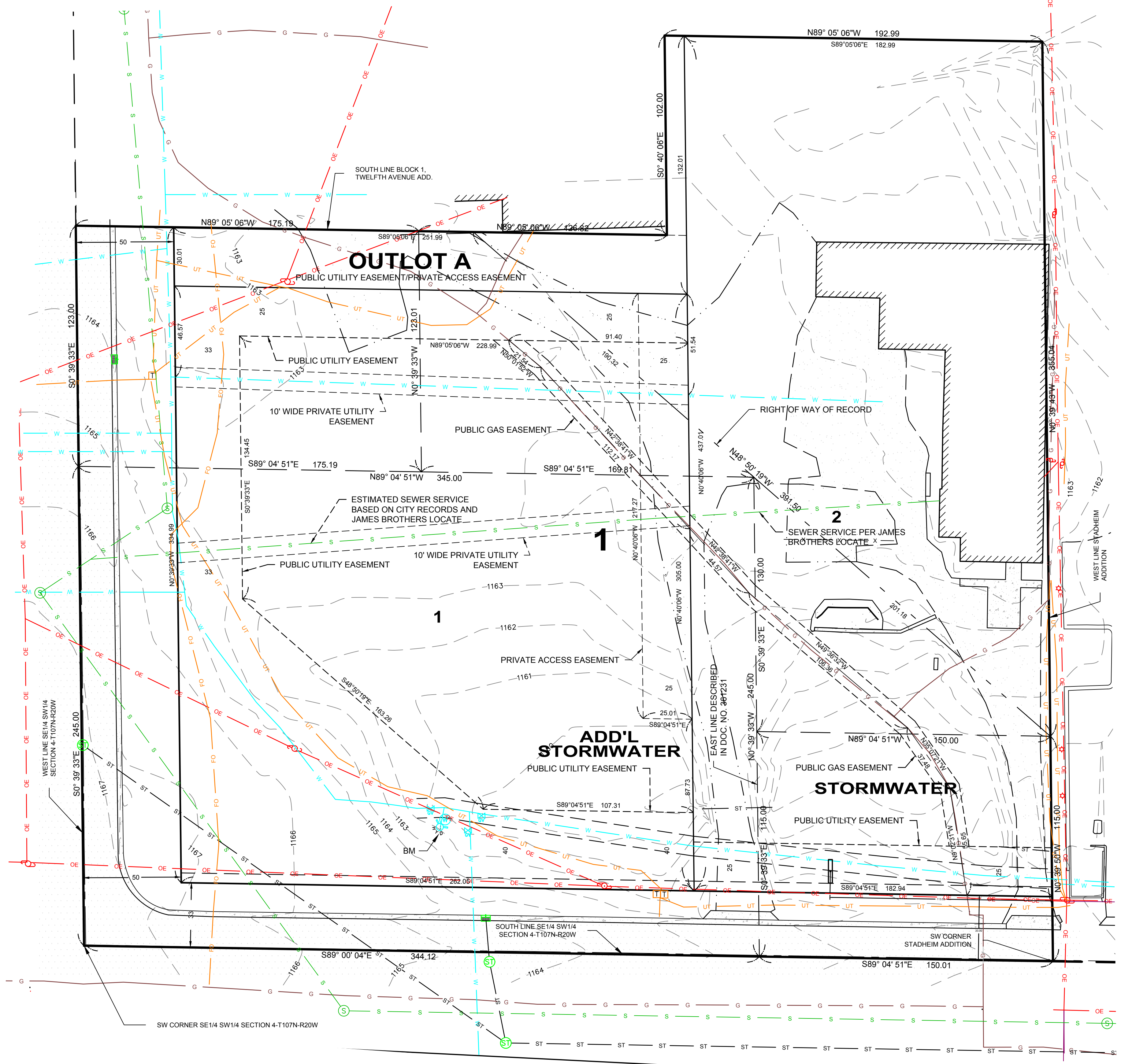
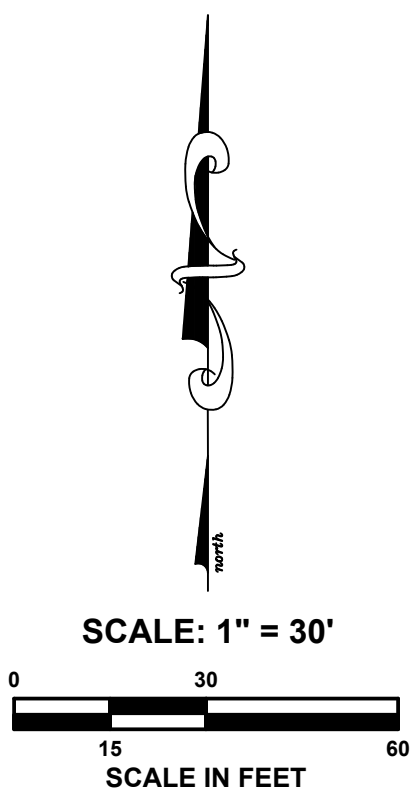


PRELIMINARY PLAT - SEMCO ADDITION

PART OF THE SE1/4 SW1/4 OF SECTION 4-T107N-R20W OWATONNA STEELE COUNTY, MINNESOTA



- LEGEND**
- = 5/8" X 16" Iron stake monument (capped RLS 52646)-Placed
 - = Iron stake monument-Found
 - W = Water Main
 - S = Sanitary Sewer
 - ST = Storm Sewer
 - G = Gas Main
 - UT = Underground Telephone
 - OT = Overhead Telephone
 - FO = Fiber-Optics
 - UE = Underground Electric
 - OE = Overhead Electric
 - X = Fence
 - ⊙ = Bollards
 - ⊙ = Electric Meter
 - ⊙ = Telephone Pedestal
 - ⊙ = Light Pole
 - ⊙ = Power Pole
 - ⊙ = Gate Valve
 - ⊙ = Catch Basin & Catch Basin Numbers
 - ⊙ = Manholes & Manhole Numbers
 - 1272 = Elevation Contour Line
 - 1271.23 = Spot Elevation
 - ▭ = Concrete Surface
 - ▭ = Bituminous Surface
 - ▭ = Gravel Surface

AERIAL PHOTOGRAPHY
NOT TO SCALE (Photo from Google Maps)



AREA
4.63 ACRES±

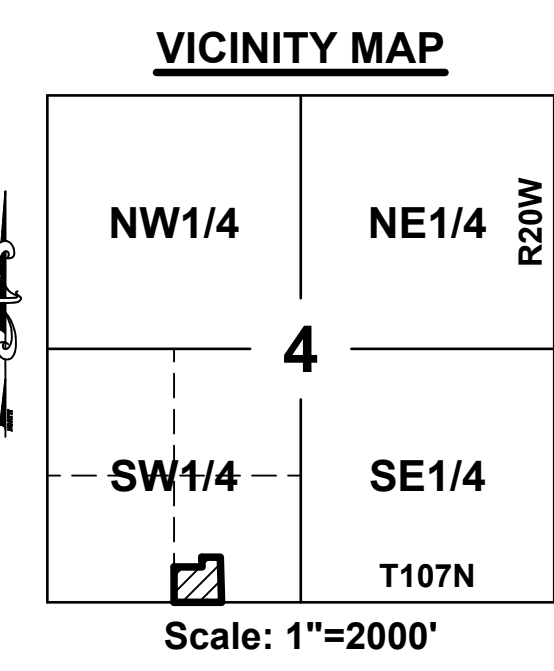
STREET ADDRESS
1180 FRONTAGE ROAD EAST
OWATONNA, MN 55060

BENCHMARK 1
Top hydrant nut located on the southwest portion of site
Elevation = 1165.51

BASIS OF BEARING SYSTEM
All bearings are based upon the MnDot Steele County Coordinate system Nad 83 (07) Harn Adjustment Grid

I hereby certify that this survey, plan, or report was prepared by me or under my direct supervision and that I am a duly Licensed Land Surveyor under the laws of the State of Minnesota.

Scott A. Tuchtenhagen, L.S. No. 52646 Date: _____



COPYRIGHT
by JONES, HAUGH & SMITH INC.

This drawing and format are protected by Copyright and all rights are reserved. The use of this drawing and format is strictly prohibited without the written consent and permission of Jones, Haugh & Smith Inc.

No responsibility is accepted for the locations of utilities shown hereon. Verification of actual locations should be requested prior to the commencement of construction or the taking of any other action relying on the actual locations.

Locations of all utilities shown are approximate.

GOPHER STATE ONE-CALL: 1-800-252-1166

PRELIMINARY PLAT SEMCO ADDITION				
PART OF THE SW1/4 SE1/4 SECTION 4-T107N-R20W				
FOR: JIM SCHIFFLER				
Drawn: SAT	 JONES HAUGH SMITH Engineers + Surveyors	Job No. 16-1116	Datum: -	
Checked: SJT		515 South Washington Ave. Albert Lea, MN 56007 507-373-4876	Survey: BPH	Book: -
Date: 08/09/2016		415 West North Street Owatonna, MN 55060 507-451-4598	Page: -	
Revised:				