



## 1535 Benning Dr

Columbus, Georgia 31903

### Property Highlights

- +/- 5,704 SF building
- Private offices and open desk areas
- Secure bank vault, cash drop safe, & ATM alcove
- +/- 652 SF drive-thru building

### Property Overview

Formerly a functioning bank, this +/- 5,704 SF building offers a layout ideal for financial institutions or other professional services. The interior features a teller counter area, secure bank vault, cash drop safe, and ATM alcove. Additional amenities include two restrooms, a break room, multiple private offices, open desk areas, and a +/- 652 SF drive-thru building. This property is available for sale for \$850,000 or for lease for \$15/SF/year with a NNN lease.

### Offering Summary

<b>Sale Price:</b>	\$850,000
<b>Lease Rate:</b>	\$15.00 SF/yr (NNN)
<b>Building Size:</b>	+/- 5,704 SF
<b>Lot Size:</b>	+/- 1.89 Acres

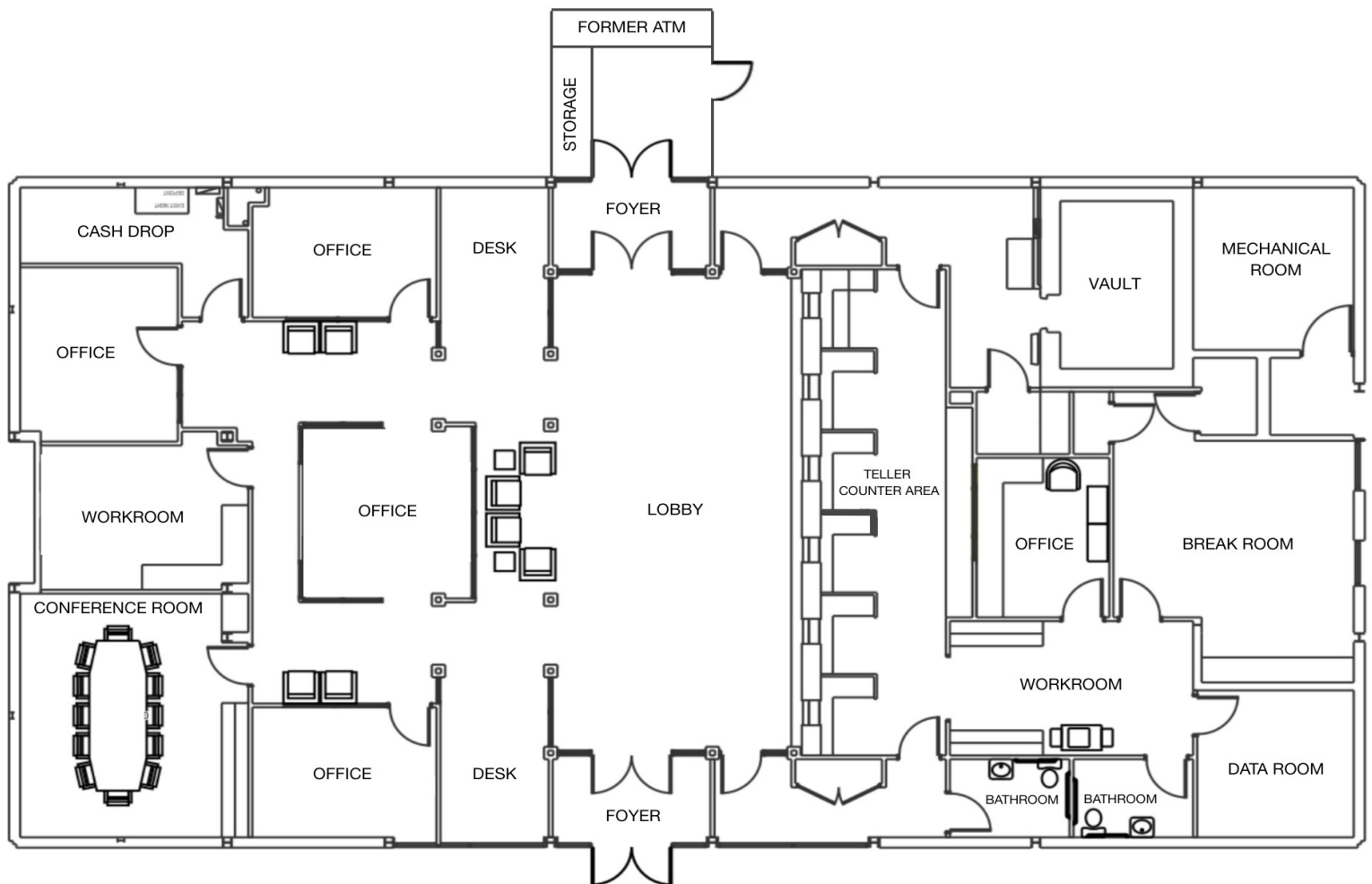
### For More Information

**Jack Hayes, SIOR, CCIM**

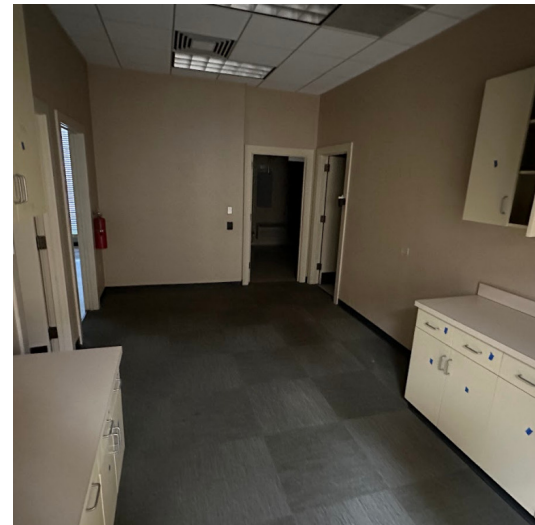
O: 706 660 5418 x1002  
jhayes@g2cre.com | GA #336627

**Roy Hightower**

O: 706 415 2081  
rhightower@g2cre.com | GA #450194









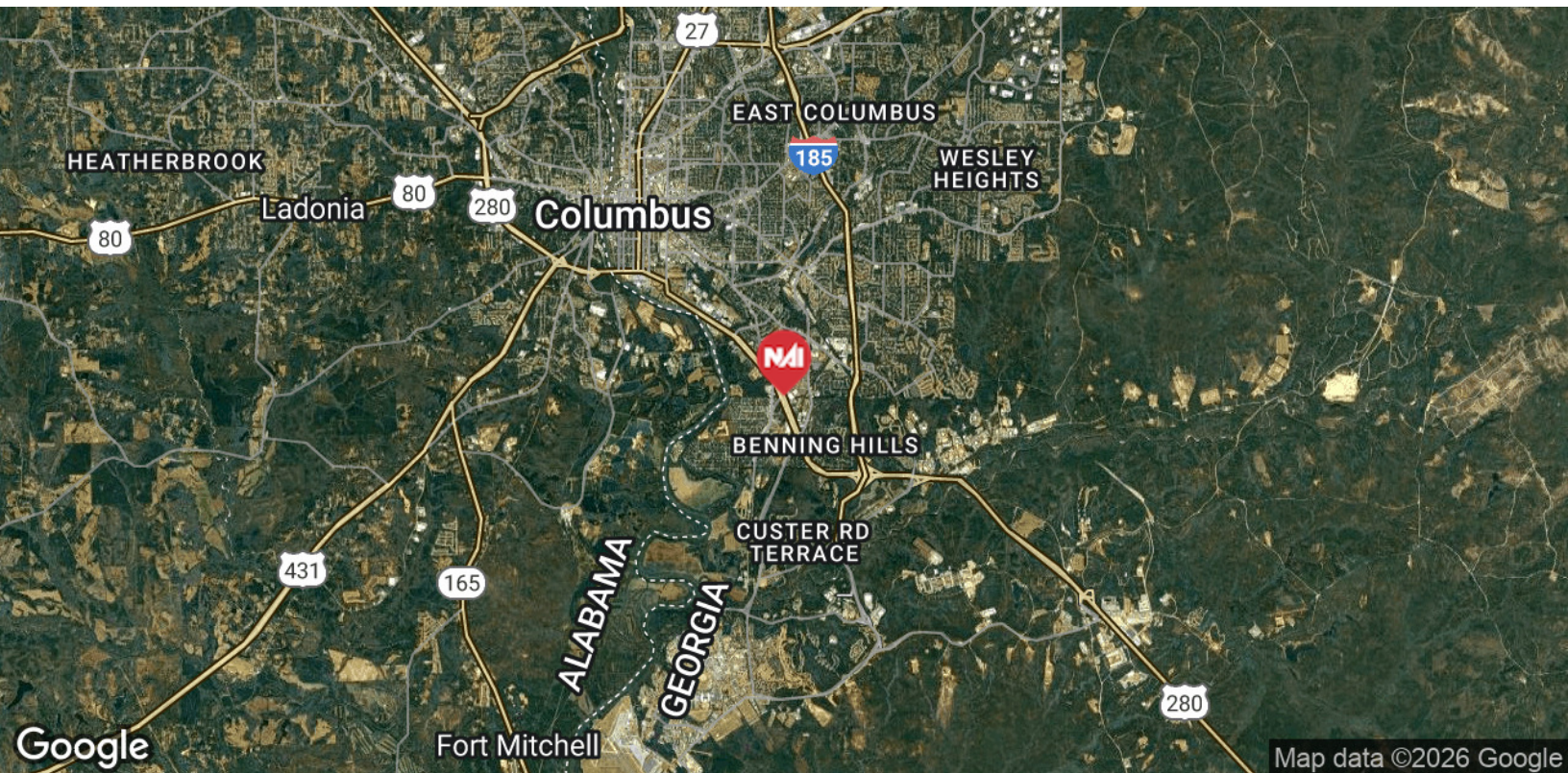
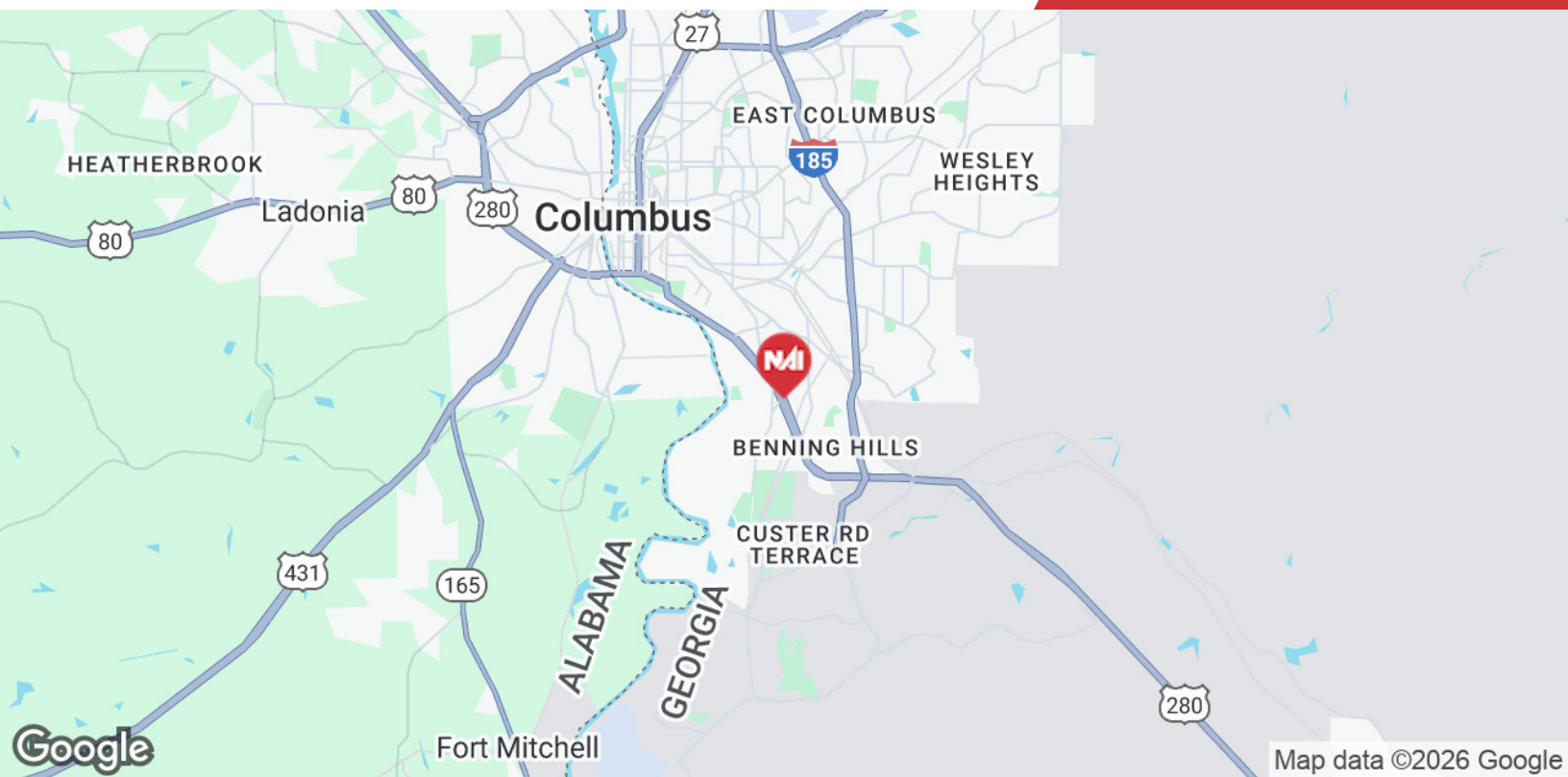


Map data ©2026 Google Imagery ©2026 Airbus, Maxar Technologies, U.S. Geological Survey

We obtained the information above from sources we believe to be reliable. However, we have not verified its accuracy and make no guarantee, warranty or representation about it. It is submitted subject to the possibility of errors, omissions, change of price, rental or other conditions, prior sale, lease or financing, or withdrawal without notice. We include projections, opinions, assumptions or estimates for example only, and they may not represent current or future performance of the property. You and your tax and legal advisors should conduct your own investigation of the property and transaction.

Post Office Box 4529  
Columbus, GA 31904  
706 660 5418 tel  
**G2cre.com**

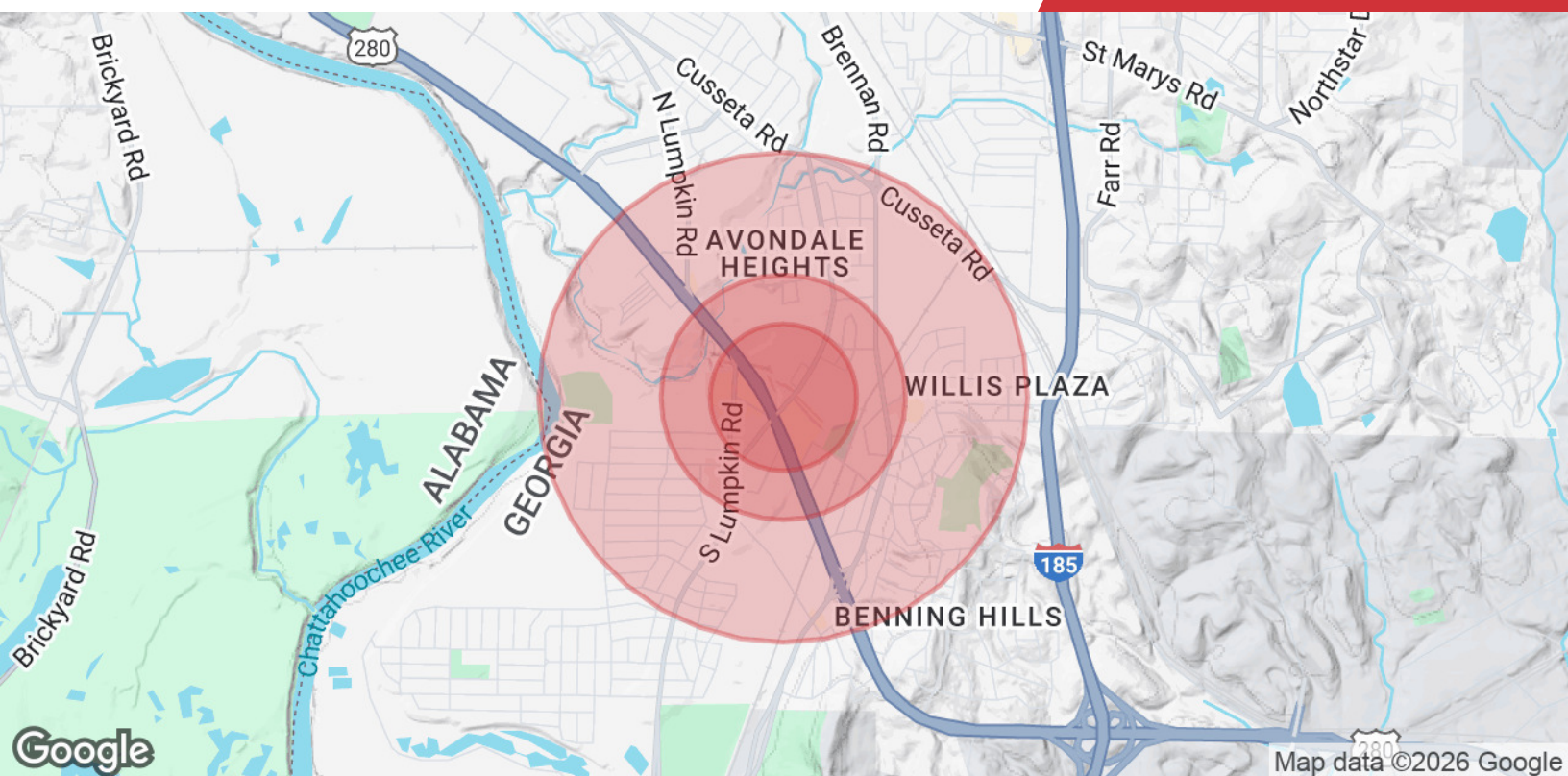




We obtained the information above from sources we believe to be reliable. However, we have not verified its accuracy and make no guarantee, warranty or representation about it. It is submitted subject to the possibility of errors, omissions, change of price, rental or other conditions, prior sale, lease or financing, or withdrawal without notice. We include projections, opinions, assumptions or estimates for example only, and they may not represent current or future performance of the property. You and your tax and legal advisors should conduct your own investigation of the property and transaction.

Post Office Box 4529  
Columbus, GA 31904  
706 660 5418 tel  
**G2cre.com**





### Population

	0.3 Miles	0.5 Miles	1 Mile
<b>Total Population</b>	581	1,690	8,568
<b>Average Age</b>	36	38	38
<b>Average Age (Male)</b>	33	35	36
<b>Average Age (Female)</b>	39	40	40

### Households & Income

	0.3 Miles	0.5 Miles	1 Mile
<b>Total Households</b>	272	781	3,650
<b># of Persons per HH</b>	2.1	2.2	2.3
<b>Average HH Income</b>	\$34,164	\$35,803	\$38,738
<b>Average House Value</b>	\$46,753	\$58,746	\$172,196

Demographics data derived from AlphaMap

## Agent Owner Disclosure Notice

Broker's designated agent is a licensed real estate professional in the State of Georgia, and holds an ownership interest in the property being advertised.