

**1435 Huntington Ave #C**  
South San Francisco, CA 94080



**JANICE LEE**  
Top 1% Realtor  
415.832.9151  
JaniceFLee@gmail.com  
www.JaniceLeeHomes.com  
CalRE#01720205



**VICTORIA LAM**  
Broker Associate  
415.455.8878  
VictoriaHomeSmart@gmail.com  
VictoriaLamHomes.com  
CALRE#01326466

The property information herein is derived from various sources that may include, but not be limited to, county records and the Multiple Listing Service, and it may include approximations. Although the information is believed to be accurate, it is not warranted and you should not rely upon it without personal verification. Not intended as a solicitation if your property is already listed by another broker. Affiliated real estate agents are independent contractor sales associates, not employees. ©2024 Coldwell Banker® Realty. All Rights Reserved. Coldwell Banker and the Coldwell Banker logos are trademarks of Coldwell Banker Real Estate LLC. The Coldwell Banker® System is comprised of company owned offices which are owned by a subsidiary of Anywhere Advisors LLC and franchised offices which are independently owned and operated. The Coldwell Banker System fully supports the principles of the Fair Housing Act and the Equal Opportunity Act.





**ASKING PRICE:  
\$1,100,000**

- 14' roll up door + 1 man door
- Main floor 1560 square Feet
- Upper Loft Floor 1160 square feet
- Total 2720 sqft
- Projected \$5500 / month rent
- 16.6 GRM
- HOA \$472.80

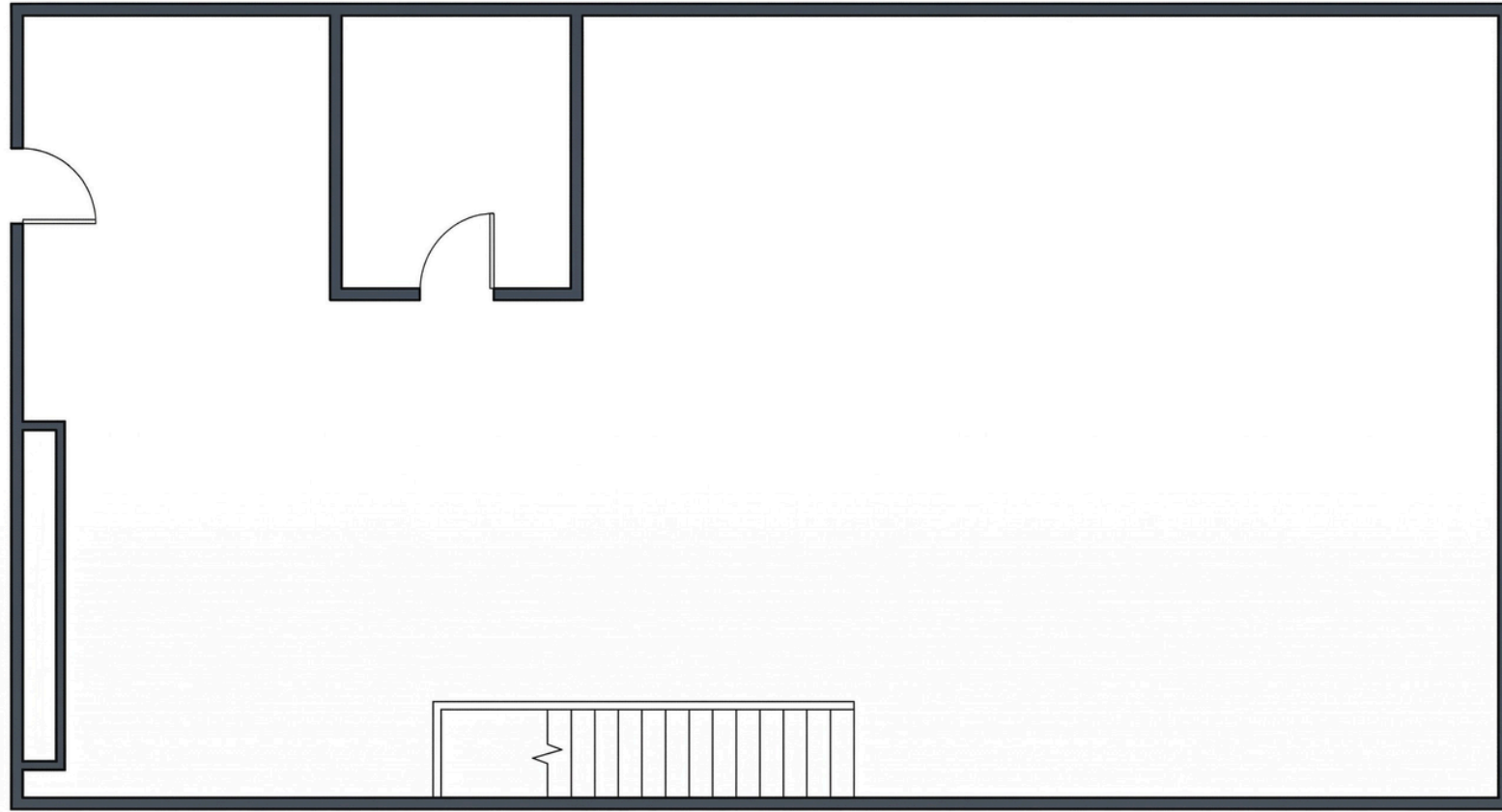
**DESIGNED FOR BUSINESS, POSITIONED FOR GROWTH.**

**PRIME FLEXIBLE SOUTH SAN FRANCISCO INDUSTRIAL WAREHOUSE WITH VERSATILE SHOWROOM AND SPACE.**

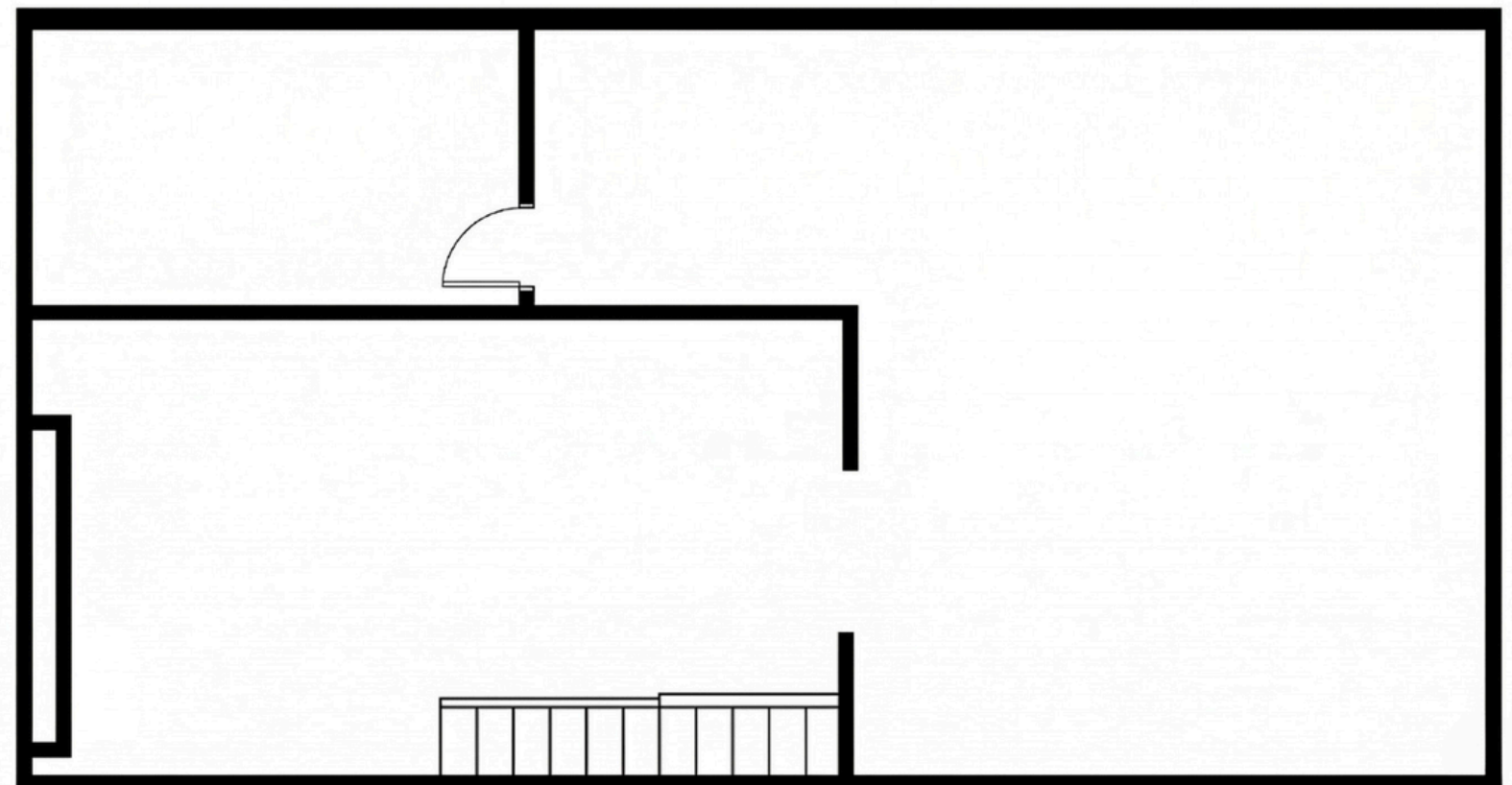
**EXCELLENT ACCESS TO 101, 280 & 380.**



Position your business for success at 1435 Huntington Ave, South San Francisco, a versatile kitchen and bath design showroom warehouse ideally located in the heart of the Northern Peninsula's industrial corridor. Perfect for an owner-user or investor, this property offers flexible industrial space with excellent accessibility and functionality. The ground floor features approximately 1,560 sq. ft., ideal for showroom, workspace, or light industrial use, while the upper level adds 1,160 sq. ft., providing additional space suitable for offices, design studios, or storage. This loft area creates flexible workspace options to meet a variety of business needs. Designed for operational efficiency, the property includes a grade level roll up door for convenient loading and deliveries, along with a separate pedestrian entrance for clients and employees. The location offers outstanding connectivity with quick access to Highways 101, 280, and 380, making transportation and logistics seamless throughout the Bay Area. Two reserved parking spaces are included, with additional unreserved parking available within the complex for staff and visitors. A rare opportunity to own a functional and well located industrial property in South San Francisco's thriving commercial hub.



FIRST FLOOR  
1560 Square Feet



SECOND FLOOR  
1160 Square Feet