

15762 CLAIRE COURT
MACOMB TWP., MICHIGAN

INDUSTRIAL FOR SALE
23,785 Square Feet Available



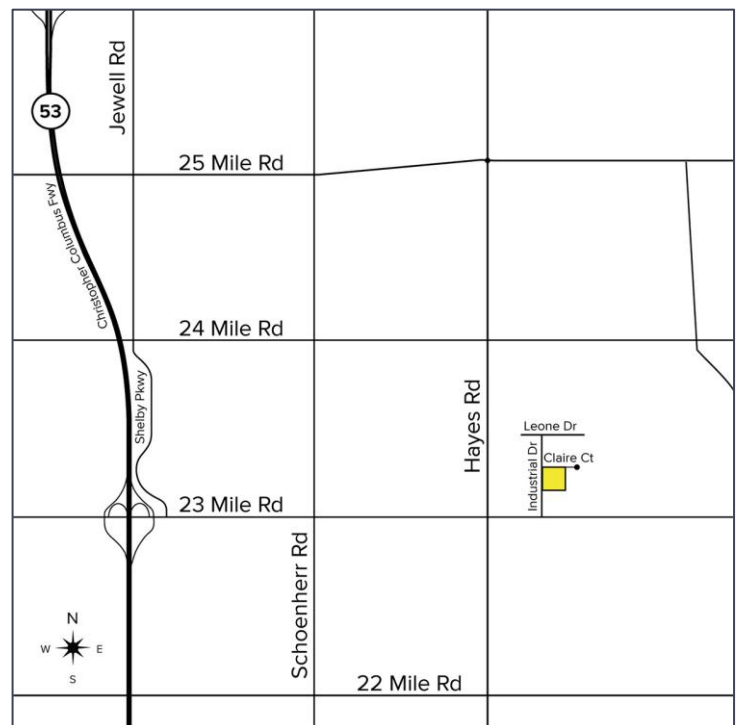
**SIGNATURE
ASSOCIATES**
KNOW SIGNATURE | KNOW RESULTS

VERY CLEAN INDUSTRIAL BUILDING



PROPERTY FEATURES

- 23,785 square feet available
- 2,385 square feet office
- 19' clear height
- (2) 14' x 12' grade level doors
- 2000 amps, 240 volts, buss duct power
- Rails for 1 & 2-ton cranes
- Located in the highly sought 23 Mile Road corridor
- Drive around capability
- 100% air-conditioned
- Contact Brokers for occupancy timing
- Sale Price: \$2,495,000 (\$104.90/sq. ft.)



For more information, please contact:

BEN WILKIEMEYER

(248) 359 0624

bwilkiemeyer@signatureassociates.com

PAUL SAAD

(248) 359 0652

psaad@signatureassociates.com

SIGNATURE ASSOCIATES

One Towne Square, Suite 1200

Southfield, MI 48076

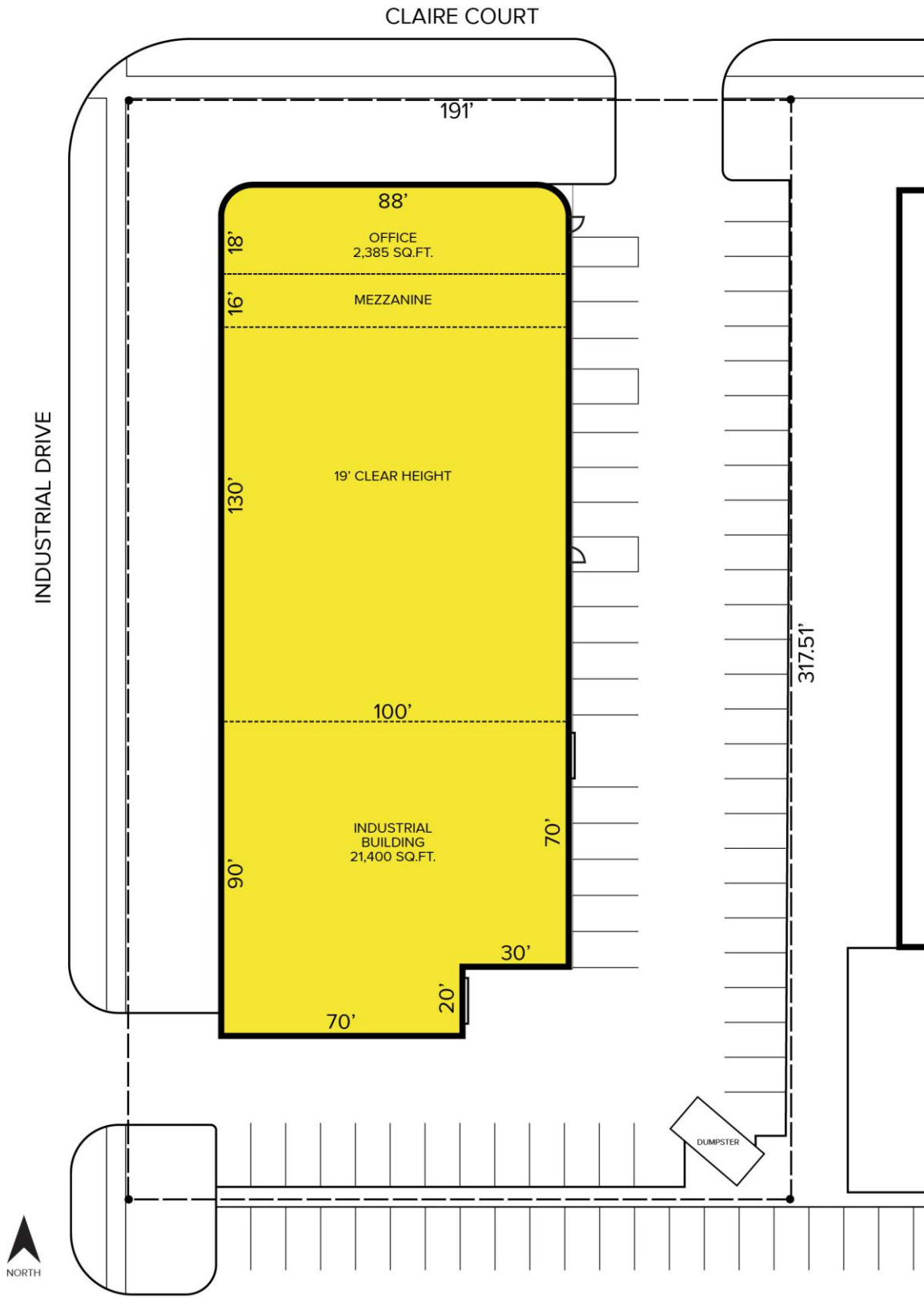
www.signatureassociates.com

15762 Claire Court – Macomb Twp., Michigan

Industrial For Sale

23,785
Square Feet
AVAILABLE

Site Plan



For more information, please contact:

BEN WILKEMEYER

(248) 359 0624

bwilkiemeyer@signatureassociates.com

PAUL SAAD

(248) 359 0652

psaad@signatureassociates.com

SIGNATURE ASSOCIATES

One Towne Square, Suite 1200

Southfield, MI 48076

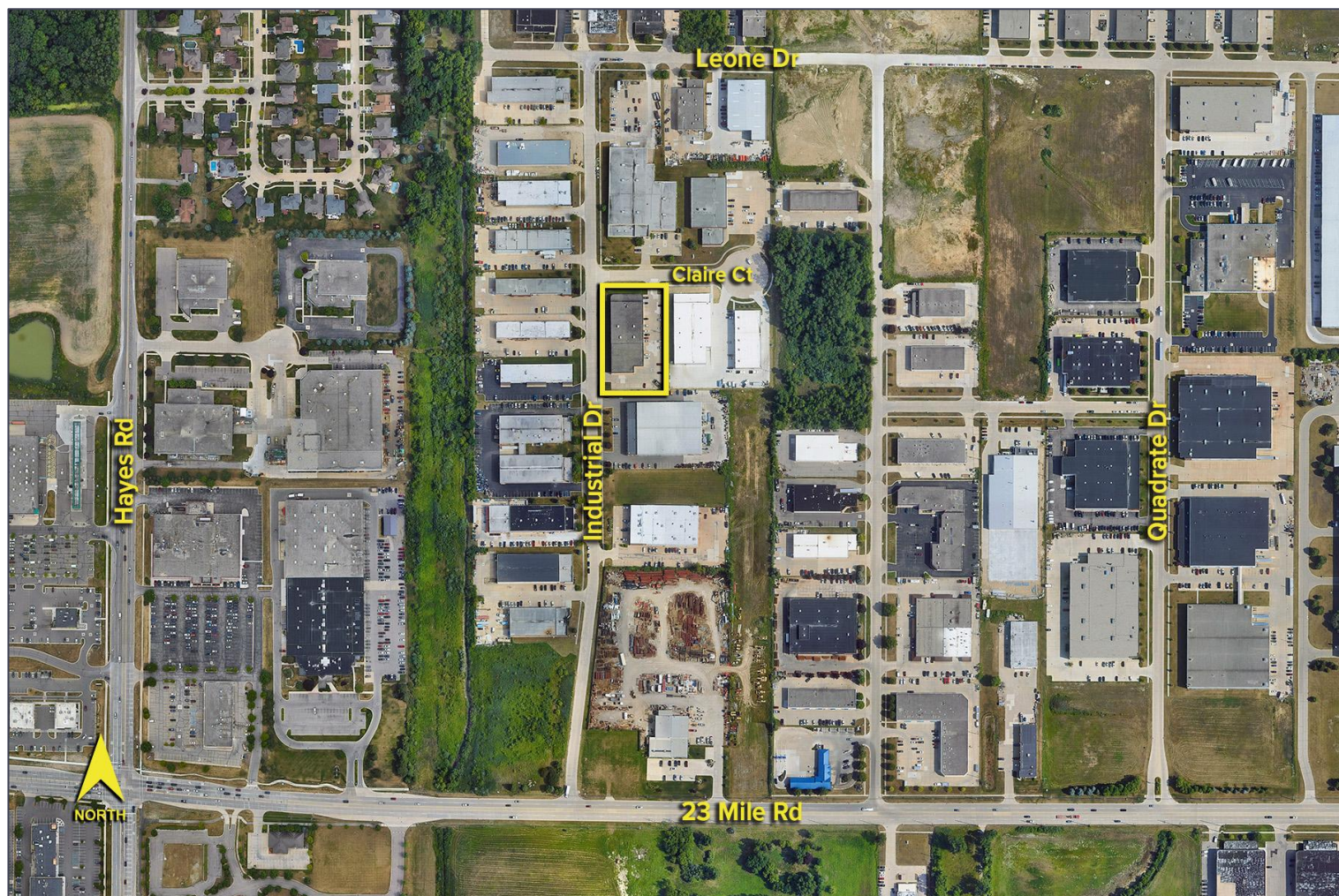
www.signatureassociates.com

15762 Claire Court – Macomb Twp., Michigan

Industrial For Sale

23,785
Square Feet
AVAILABLE

Aerial



For more information, please contact:

BEN WILKIEMEYER

(248) 359 0624

bwilkiemeyer@signatureassociates.com

PAUL SAAD

(248) 359 0652

psaad@signatureassociates.com

SIGNATURE ASSOCIATES

One Towne Square, Suite 1200

Southfield, MI 48076

www.signatureassociates.com

Information is subject to verification and no liability for errors or omissions is assumed. Price is subject to change and listing withdrawal.