



# Willow Lawn Office Building Redevelopment Opportunity

EXCLUSIVE LISTING

# NOW AVAILABLE



## 1650 WILLOW LAWN DRIVE

RICHMOND, VA 23230



**NOW AVAILABLE**

### PROPERTY HIGHLIGHTS

- ✓ PREVIOUSLY A BANK FOR 10+ YEARS
- ✓ DRIVE THRU SPACE
- ✓ 17,749 SQUARE FEET
- ✓ 1.156 ACRES

TOM ROSMAN | 804.539.3017  
tom.rosman@onesouthcommercial.com

LORY MARKHAM | 804.248.2561  
lory.markham@onesouthcommercial.com

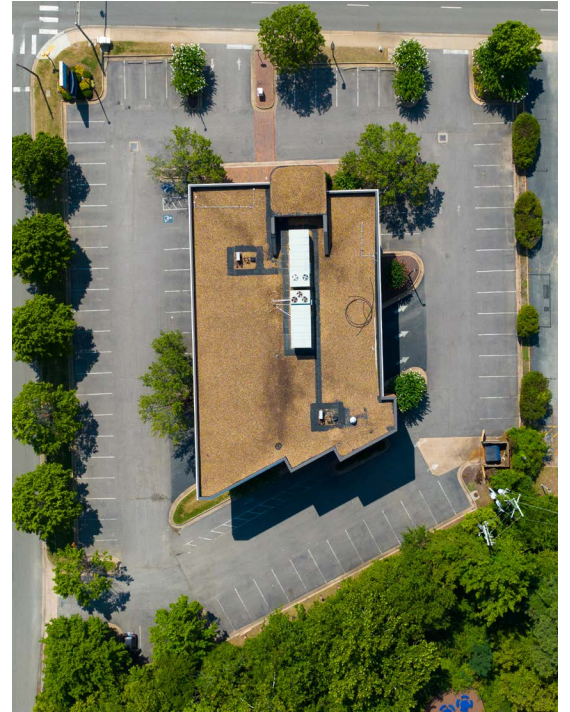


**One South Commercial is pleased to present, for both SALE or LEASE, the exclusive listing of 1650 Willow Lawn Drive. The property sits in one of Richmond's hottest commercial neighborhoods. The Willow Lawn shopping center is going through a huge resurgence attracting national branches & local favorites. The crowds are large and consistent.**

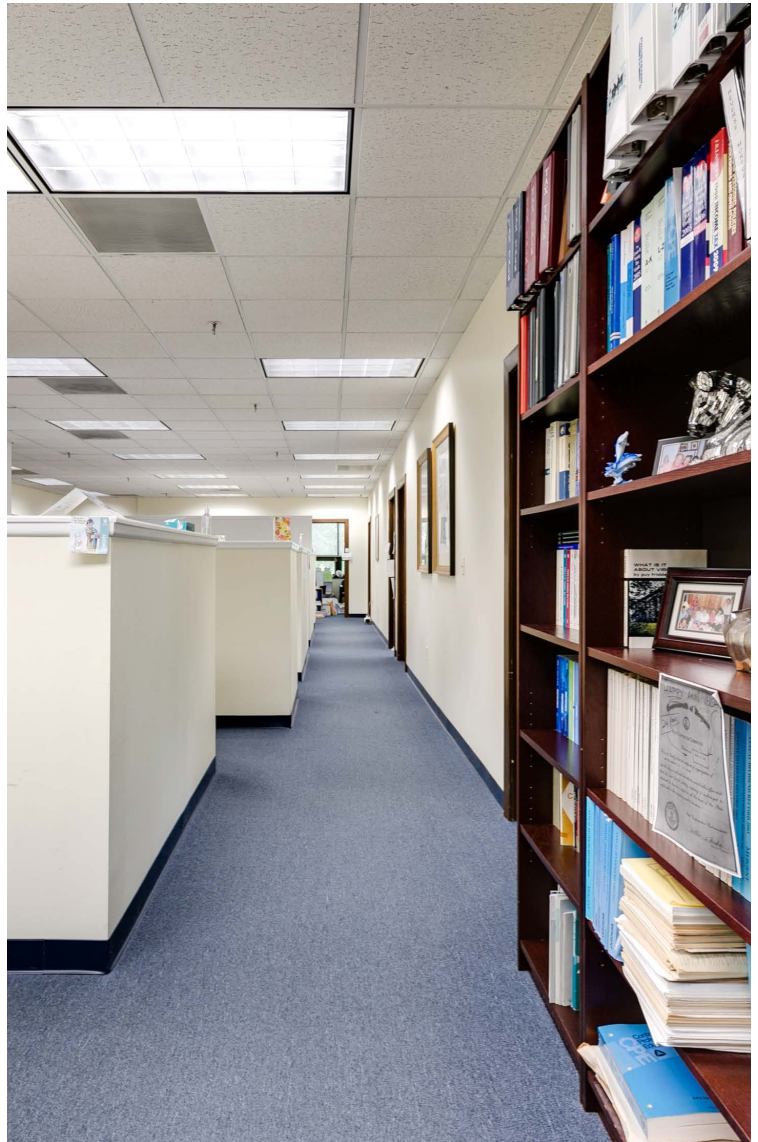
The building consists of 2 floors of office and a ground floor which, previously housed a local bank, Village Bank. The bank space offers a drive thru and an ATM set up.

Made up of a beautiful brick exterior, the building sits on a corner and has great street presence. The bank space is 3,085 sq ft and the office space makes up 13,951 sq ft. The covered mall provides an additional 713 sq ft alongside the 60 parking spots for the building.

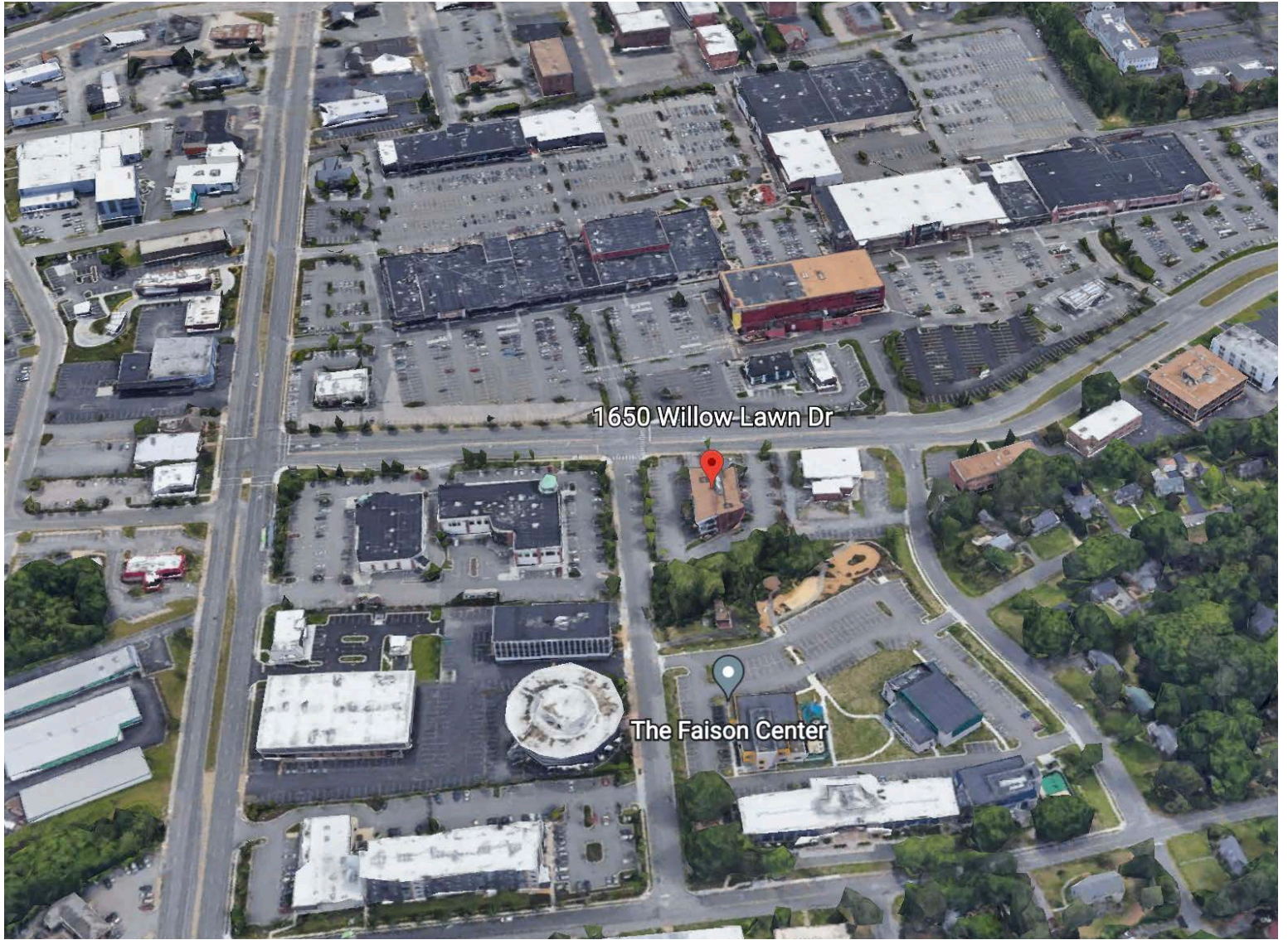
1650 Willow Lawn Drive is a perfect building for an owner occupant or a great opportunity to redevelop the property into a multi-family or condo development.



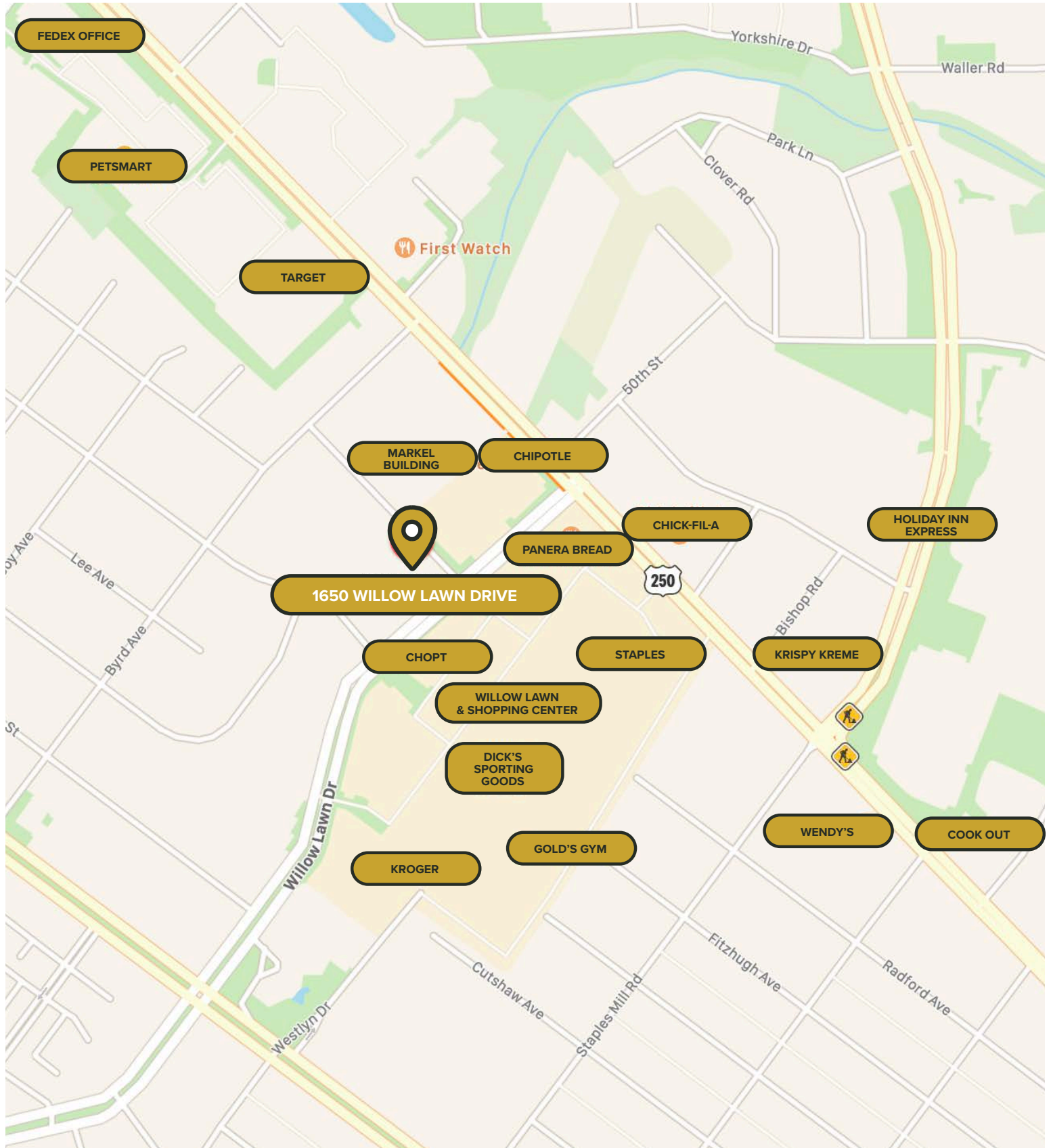








LOCATION





**ONE SOUTH COMMERCIAL** is a CoStar PowerBroker in the Richmond, VA investment sales market. Our reputation among those with local knowledge as the premier investment sales shop in the City of Richmond is built on a wide network of relationships with principals all over the world who trust us and our ability to effectively analyze the economics of any deal and represent them honestly.

## MEET YOUR AGENTS



**TOM ROSMAN | 804.539.3017**  
tom.rosman@onesouthcommercial.com



**LORY MARKHAM | 804.248.2561**  
lory.markham@onesouthcommercial.com

