

FOR SALE- Off Market

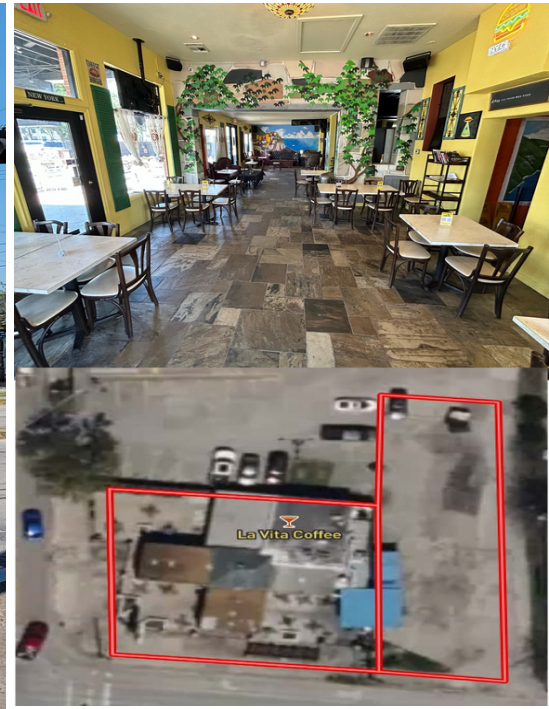
Houston Heights - Hard Corner



1416 Waseca St., Ste 200, Houston, Texas, 77055

3730 Washington Ave
Houston, Texas 77007

\$3,200,000



13,581 sq ft lot (2 lots)

2260 Sq Ft Building

Location! Location! Location!

REALLY...

Conveniently located in the vibrant West End neighborhood of The Heights, this 2,260-square-foot building property sits prominently at the high-traffic intersection of Yale Blvd and Washington Ave. Positioned on a coveted hard corner lot with multiple access points, it offers superb visibility in one of Houston's most sought-after areas.

This prime real estate is perfectly positioned equidistant from Memorial Park and Houston's Central Business District. Just a short distance from the newer developed H-E-B and only 0.5 miles from I-10, the property is surrounded by upscale mixed-use and multi-family developments, making it a standout in this highly desirable neighborhood.

Equipment and Furniture Included

Includes all owned equipment and furniture. Open to considering the sale of the businesses.

This property spans two adjacent parcels, offering an excellent location suitable for a wide range of uses including as it's currently being used now, as a restaurant, or start all over with ground up development.

FOR MORE INFORMATION CALL SUSIE- 417-554-1119

marlowecommercialgroup
Commercial | Leasing | Residential

Susie Griswold
COMMERCIAL REALTOR®

417-554-1119
susie@susiegriswold.com

Marlowe Commercial Group does not guarantee the accuracy of square footage, lot size, or other information concerning the condition or features of the property provided by the seller or obtained from public records or other sources and the buyer is advised to independently verify the accuracy of that information through personal inspection with appropriate licensed professionals.