

555-557 MAIN STREET ORANGE, NEW JERSEY 10,400 SF | DIVISIBLE | FOR LEASE

KYLE GOWOREK
kgoworek@jefferyrealty.com
C: 201.978.1770
O: 908.668.9600

SHANE WIERKS
swierks@jefferyrealty.com
C: 908.581.7781
O: 908.668.9600



555-557 MAIN STREET ORANGE, NEW JERSEY

SITE INFORMATION



SIZE
10,400 SF

FRONTAGE
60 FT 10 IN on Main Street

RENT
Call for Quote

NNN
\$5.65 PSF

GLA
140,000 SF

TRAFFIC COUNTS
Main Street - 8,338 VPD

- NOTES**
- Divisions from 4,400-6000 SF
 - On-site Private Parking Lot with 21 Spaces
 - Billboard Signage Available
 - Pylon Signage Available at Shops on Main

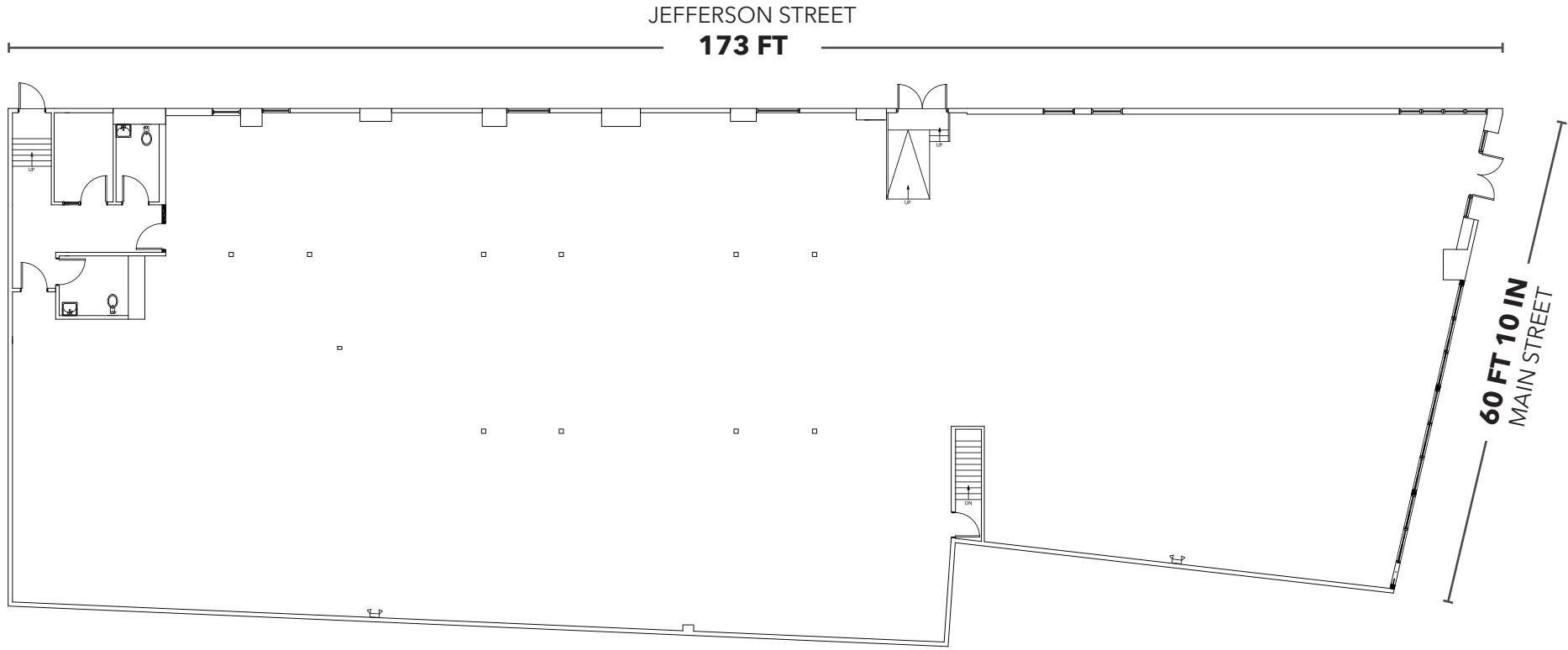
555-557 MAIN STREET ORANGE, NEW JERSEY

BUILDING PHOTOS



555-557 MAIN STREET ORANGE, NEW JERSEY

FLOOR PLAN



555-557 MAIN STREET ORANGE, NEW JERSEY



For more information, please contact our exclusive brokers:

KYLE GOWOREK

kgoworek@jefferyrealty.com

C: 201.978.1770

O: 908.668.9600

SHANE WIERKS

swierks@jefferyrealty.com

C: 908.581.7781

O: 908.668.9600



52 Millburn Ave. • Springfield, NJ 07081 • T: 908.668.9600 • F: 908.662.5225 • www.JefferyRealty.com

All information is from sources deemed reliable and is submitted subject to errors, omissions, change of price, terms, prior sales and withdrawals.

