

# 2522 S Wilmington

Raleigh, NC 27603

OFFICE-RETAIL-FLEX FOR LEASE



# PROPERTY SUMMARY

**Address** 2522 S Wilmington

**Availabilities** Ste 110 - 1,491 SF

**Lease Rate** \$22.00 PSF NNN

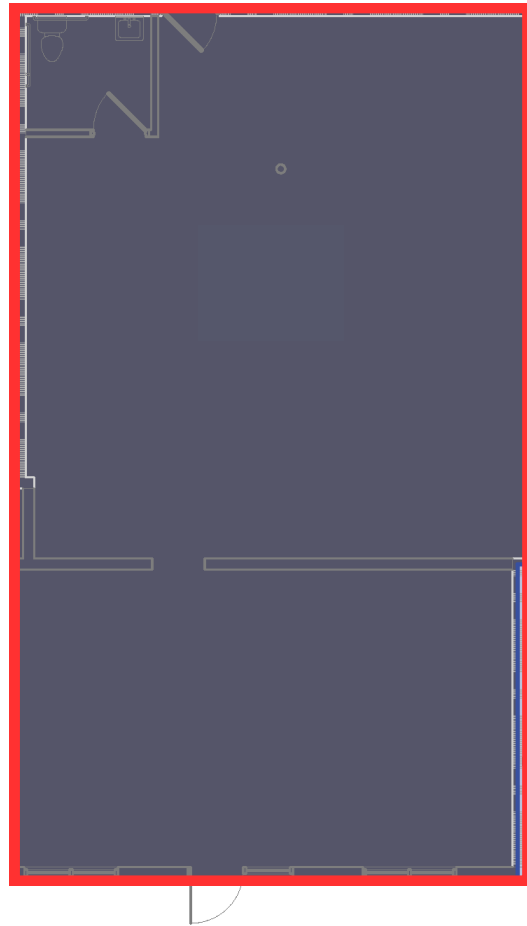
**TICAM** Est. \$6.00 PSF

Fully renovated, modern space positioned minutes from the emerging Downtown South district and the NC State Farmers Market. Offering from 1,292 - 2,783 SF with a flexible layout that works for office, showroom/retail, or light flex uses—plus easy, on-site surface parking for staff and customers.

## HIGHLIGHTS

- Flexible plan suitable for office, retail/showroom, studio, or service uses
- Highly accessible S Wilmington St location near Downtown South & Farmers Market
- Quick connectivity to I-40/I-440 and Downtown Raleigh
- Convenient on-site parking with direct, ground-level entry

# Floor Plan



Suite 110: 1,491 SF

DOWNTOWN  
RALEIGH

DIX PARK

NC STATE  
FARMERS  
MARKET

Martin Luther King Jr. Blvd.

**SITE**



S Wilmington St.

# CONTACT

Trent Ragland, Broker

(C) 919.815.8414

tragland@atlasstark.com

Tyler Christensen, Broker

(C) 828.999.9459

tchristensen@atlasstark.com



Atlas Stark Holdings LLC |

2020 Progress Ct, Suite 130A, Raleigh, NC

