

FOR SUBLEASE

37,544 - 100,355 SF AVAILABLE

 SAN FRANCISCO BAY OAKLAND
INTERNATIONAL AIRPORT

1410 HARBOR BAY PARKWAY

1601 HARBOR PARKWAY

1751 HARBOR PARKWAY

N LOOP RD

1410, 1601 & 1751 HARBOR BAY PARKWAY

ALAMEDA | CA 94502

CBRE

HIGHLIGHTS

1410 HARBOR BAY PARKWAY
100,355 Sq. ft.



236
Parking Spaces



28'
Clear Height



3,000 AMPS,
277/480 Volt Power
(Expandable)



Build To Suit
Interiors



Dock & Grade-Level
Loading



Truck Courts &
Optimal Circulation



Industrial & Last
Mile Uses



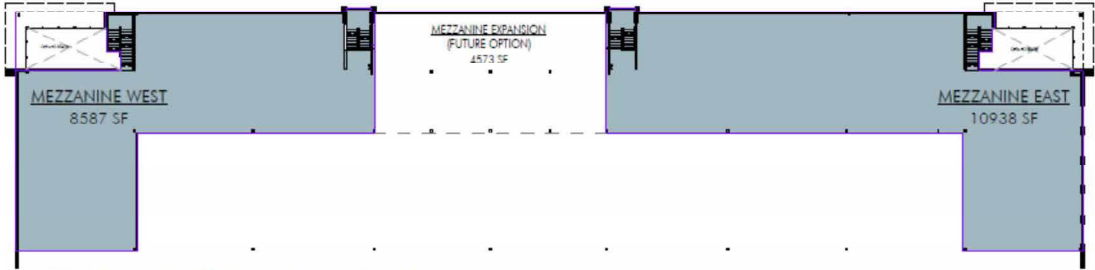
Prominent Entry
Features & Extensive
Window Line



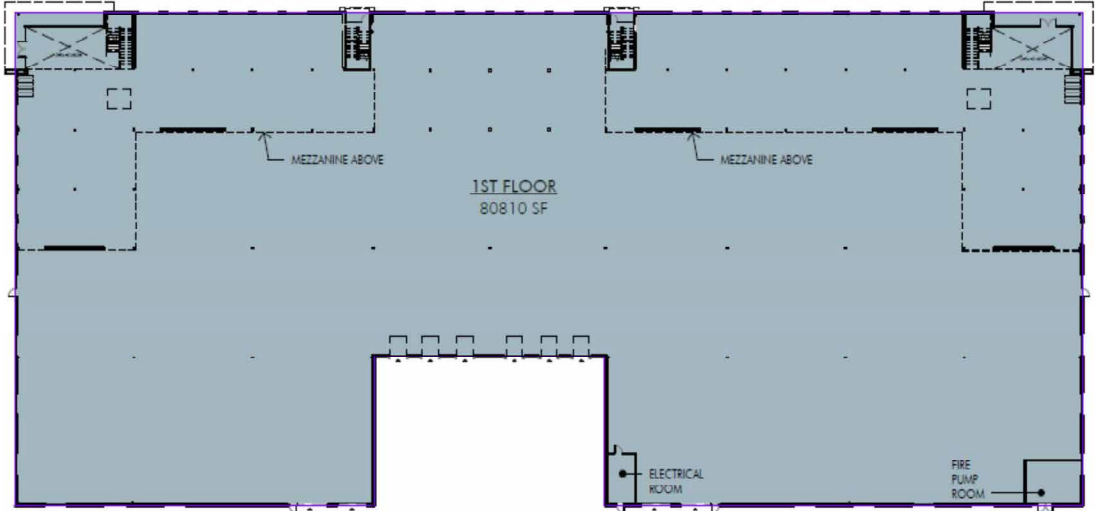
Suitable For Advanced
Manufacturing,
Biotech, Food Production

FLOOR PLAN

1410 HARBOR BAY PARKWAY
100,355 Sq. ft.

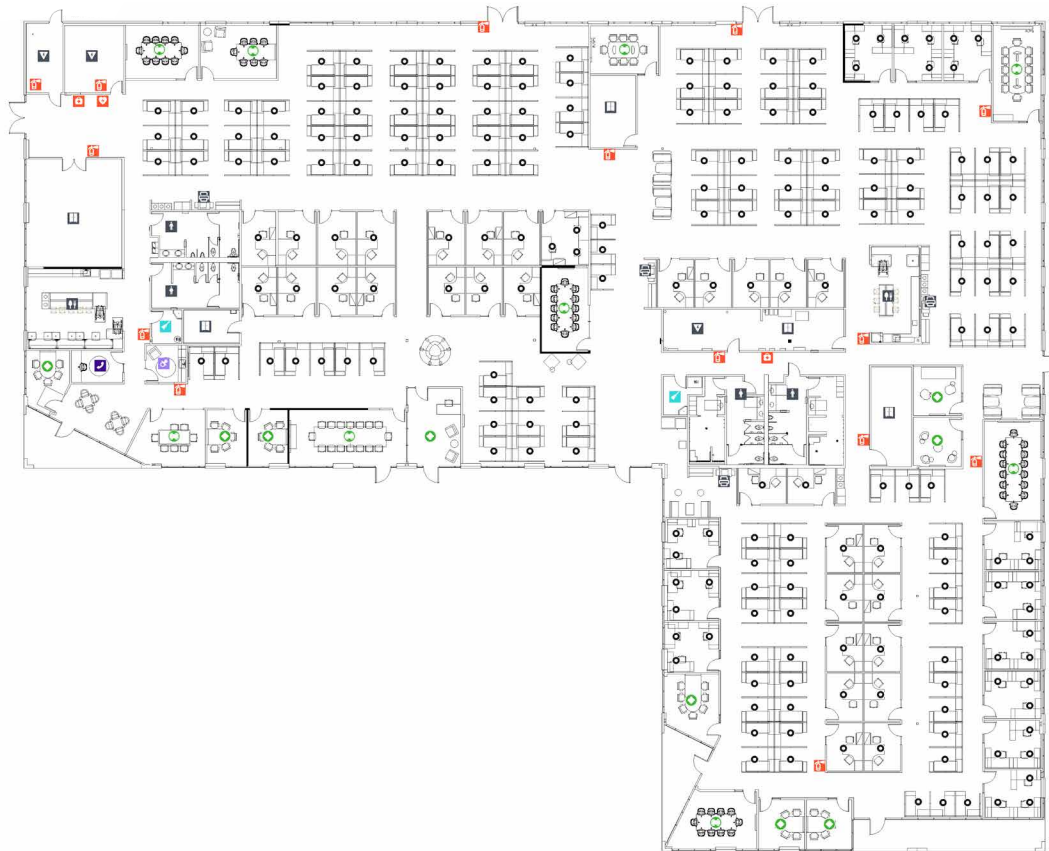


MEZZANINE GROSS AREA PLAN



FLOOR PLAN

1601 HARBOR BAY PARKWAY
37,544 Sq. ft.



KEY FEATURES

142 Work Stations

6 Bench Desks

2 General Space

6 Huddle Rooms

1 Lobby

2 Large-Sized Meeting Rooms

7 Medium- Sized Meeting Rooms

31 Private Offices

39 Shared Offices

142 Workstations



FLOOR PLAN

1751 HARBOR BAY PARKWAY
74,170 Sq. ft.

KEY FEATURES

FIRST FLOOR

- 28 Bench Desks
- 8 General Spaces
- 1 Lobby
- 15 Meeting Rooms
- 17 Private Offices
- 15 Shared Offices
- 75 Work Stations

SECOND FLOOR

- 4 Meeting Rooms
- 11 Private Offices
- 37 Shared Offices
- 12 Work Stations

FIRST FLOOR



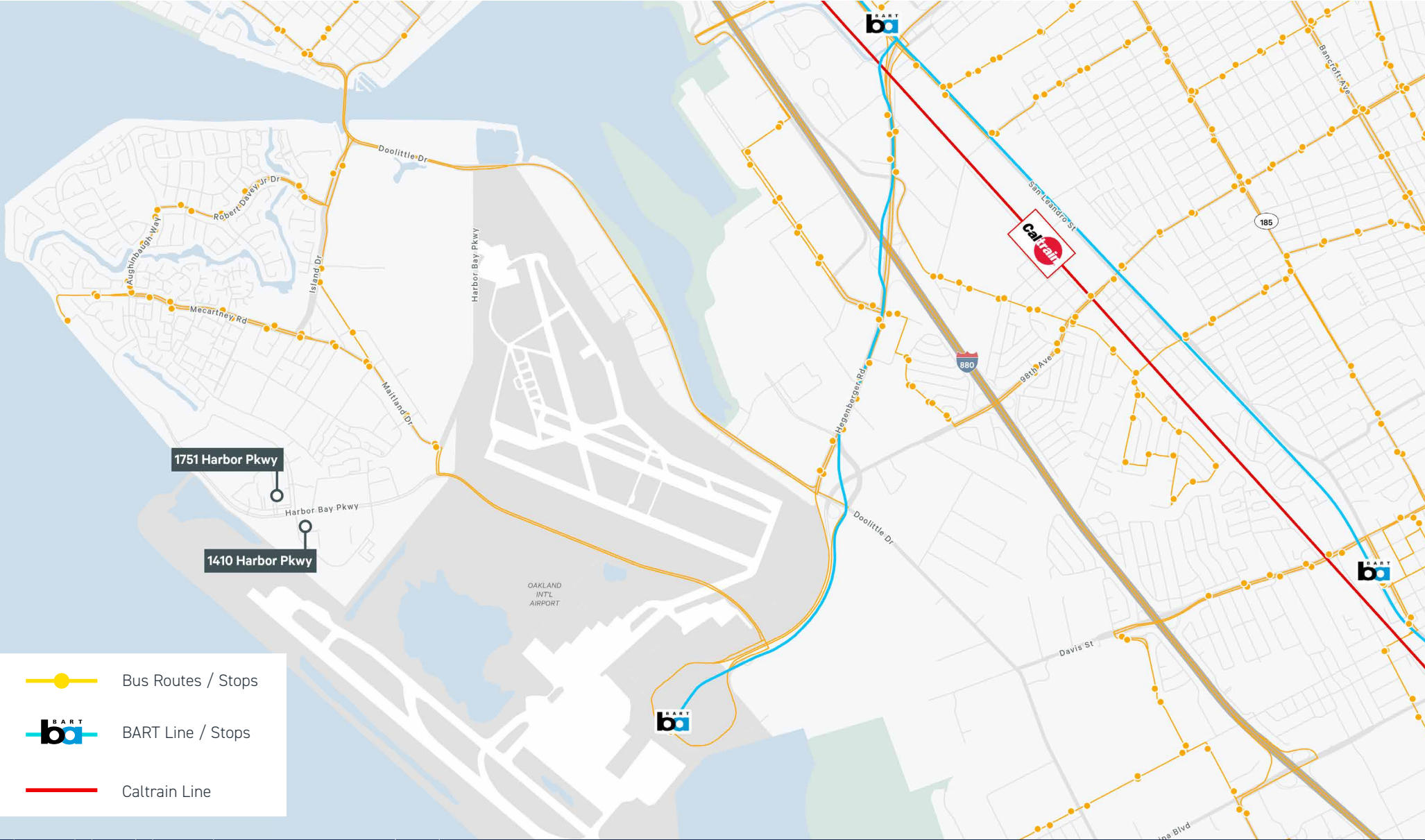
SECOND FLOOR



AMENITY MAP



TRANSPORTATION MAP

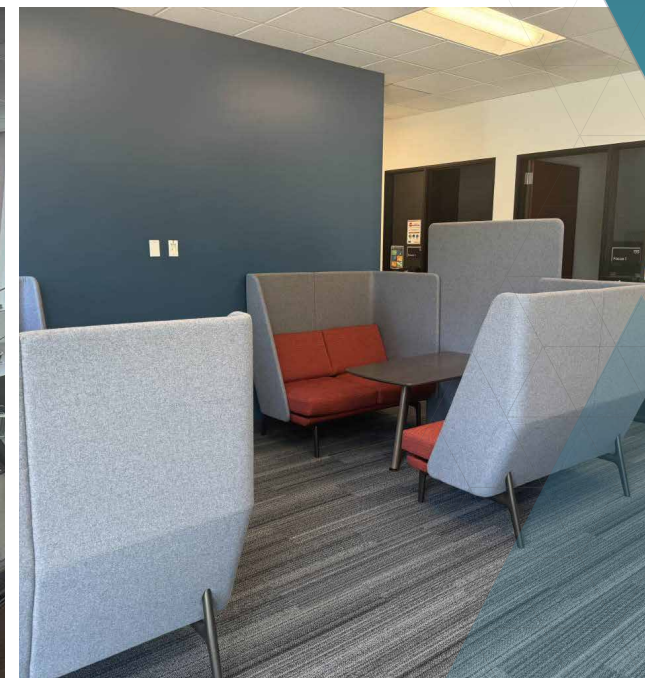
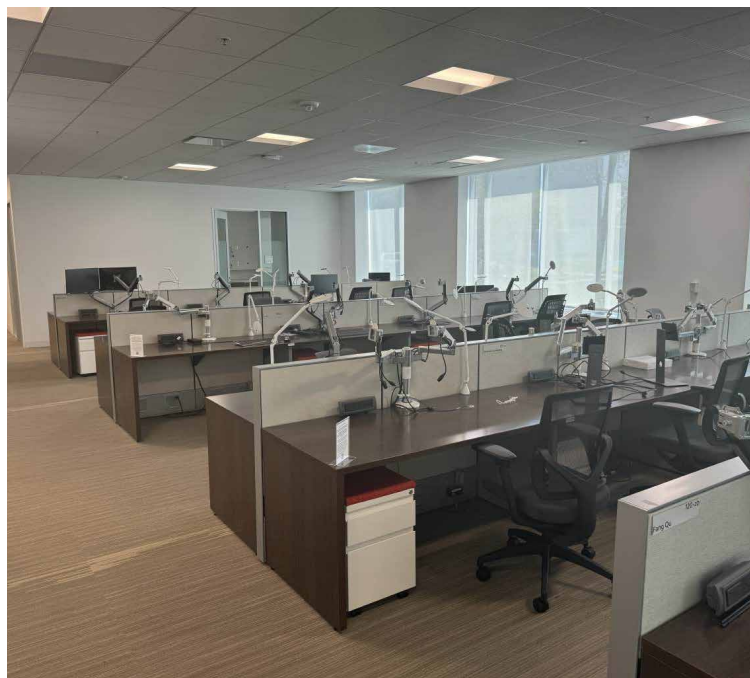
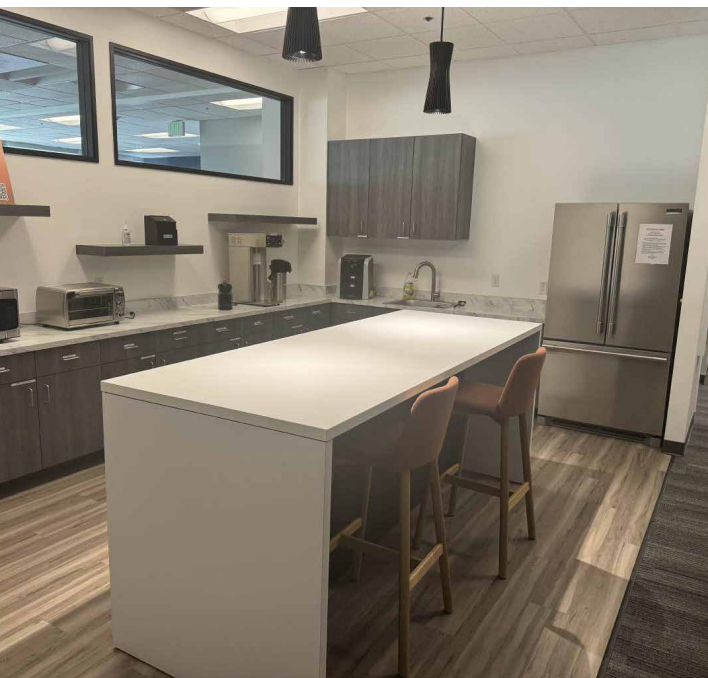


CORPORATE NEIGHBOR'S MAP



- Corporate Neighbors**
- 1 Abbot Diabetes Care
 - 2 Convergent Laser Technologies
 - 3 iQ Biosciences
 - 4 LeukoLab - Alameda
 - 5 US Flight Standards District Office
 - 6 Bespoke Wellness
 - 7 Family Stations
 - 8 US Food & Drug Administration
 - 9 Element Youth Group
 - 10 Penumbra
 - 11 Acts2 Network
 - 12 Alameda County Environmental Health
 - 13 Prometric Test Center
 - 14 California Live Scan Center
 - 15 REAL System
 - 16 ABB Optical Group
 - 17 Saarman Construction
 - 18 Unique Elevator Interiors
 - 20 Pacific Rim Produce
 - 21 Rondo Energy
 - 22 Semifreddi's World Headquarters
 - 23 Donsuemor Madeleines
 - 24 Santa Clara Systems
 - 25 Magnetic Insight
 - 26 Why Cook? Catering
 - 27 Peets Coffee Roasting Plant
 - 28 Ettore Products Company
 - 29 Kiva
 - 30 Hampton Inn & Suites
 - 31 Home2 Suites
 - 32 CCL - Imprint Energy
 - 33 Frito Lay Distribution Center

INTERIOR



1410, 1601 & 1751 HARBOR BAY PARKWAY

ALAMEDA | CA 94502



CONTACTS

Gregg Domanico

Vice Chairman

+1 415 215 5218

gregg.domanico@cbre.com

Lic. 00996779

Sai Domanico

Senior Vice President

+1 650 577 2943

sai.domanico@cbre.com

Lic. 02044845

Robert Smith

Associate

+1 650 296 7003

Robbie.Smith@cbre.com

Lic. 02212230

CBRE

© 2024 CBRE, Inc. All rights reserved. This information has been obtained from sources believed reliable but has not been verified for accuracy or completeness. CBRE, Inc. makes no guarantee, representation or warranty and accepts no responsibility or liability as to the accuracy, completeness, or reliability of the information contained herein. You should conduct a careful, independent investigation of the property and verify all information. Any reliance on this information is solely at your own risk. CBRE and the CBRE logo are service marks of CBRE, Inc. All other marks displayed on this document are the property of their respective owners, and the use of such marks does not imply any affiliation with or endorsement of CBRE. Photos herein are the property of their respective owners. Use of these images without the express written consent of the owner is prohibited.