

# Belt Boulevard Industrial Land

Presented By:  
Haas Realty Group

3624 Belt Blvd, Richmond, VA 23234



# Belt Boulevard Industrial Land

3624 Belt Blvd, Richmond, VA 23234

## Property Details

12.77 Acres flat, partially cleared, contiguous to CSX railroad, currently 8.577Ac M1 light manufacturing/industrial and 4.19Ac R4 1 and 2 Family Residential Land designated for light and heavy manufacturing, woodworking shops, repair shops, and wholesale service and storage facilities. Offices, hotels, and most retail uses are also allowed. Churches and other places of worship are permitted as-of-right, while certain community facilities, like hospitals, require special use permits. See the Richmond 300 Plan. <https://www.rva.gov/planning-development-review/master-plan> for future land use designations and Richmond Zoning for current allowed uses: [https://library.municode.com/va/richmond/codes/code\\_of\\_ordinances?nodeId=CH30ZO](https://library.municode.com/va/richmond/codes/code_of_ordinances?nodeId=CH30ZO) and

**Price: Upon Request**

View the full listing here: <https://www.loopnet.com/Listing/3624-Belt-Blvd-Richmond-VA/31511134/>

Price:	Upon Request
Property Type:	Land
Property Subtype:	Commercial
Proposed Use:	Industrial
Sale Type:	Investment
Total Lot Size:	12.77 AC
No. Lots:	1
Zoning Description:	8.58Ac M1, 4.19Ac R4
APN / Parcel ID:	C009-0692-006

# Belt Boulevard Industrial Land

3624 Belt Blvd, Richmond, VA 23234

## Location



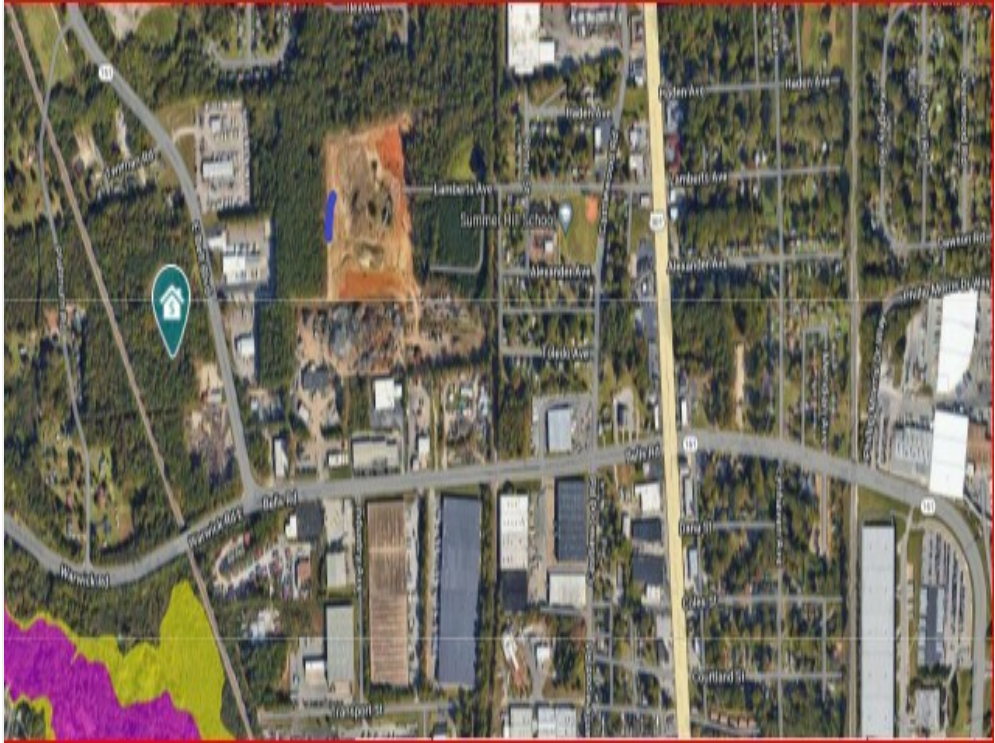
# Belt Boulevard Industrial Land

3624 Belt Blvd, Richmond, VA 23234

## Property Photos



Plat Map



Aerial

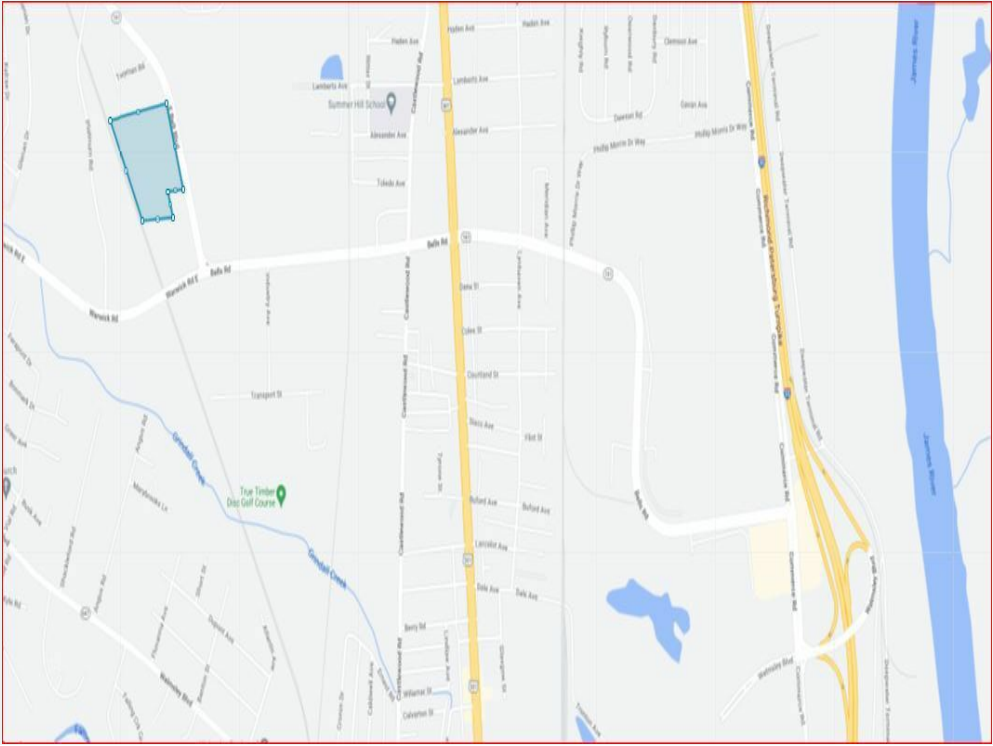
# Belt Boulevard Industrial Land

3624 Belt Blvd, Richmond, VA 23234

## Property Photos



Aerial



Aerial

# Belt Boulevard Industrial Land

3624 Belt Blvd, Richmond, VA 23234



**Susan Haas**

[susan@haasrealtygroup.com](mailto:susan@haasrealtygroup.com)

(804) 349-5788

**Haas Realty Group**

10431 Patterson Ave

Richmond, VA 23238