

## PREMIER OFFICE AT LEGACY TOWER

*1 Bausch and Lomb Place, Rochester, NY 14604*



### ADAM BORRELL

*Senior Leasing Executive*

(585) 615-3593

[aborrell@buckprop.com](mailto:aborrell@buckprop.com)

### SQUARE FOOTAGE

8,200 SF

### ABOUT THE SPACE

This modern office space features a mostly open floor plan, several private offices, and plenty of natural light. The class A office building is known for its dramatic design, granite façade and 11,000 square foot glass-enclosed Wintergarden. Extensive amenities include a grab-and-go café, 4,500 square foot fitness center, and multiple training/meeting rooms.

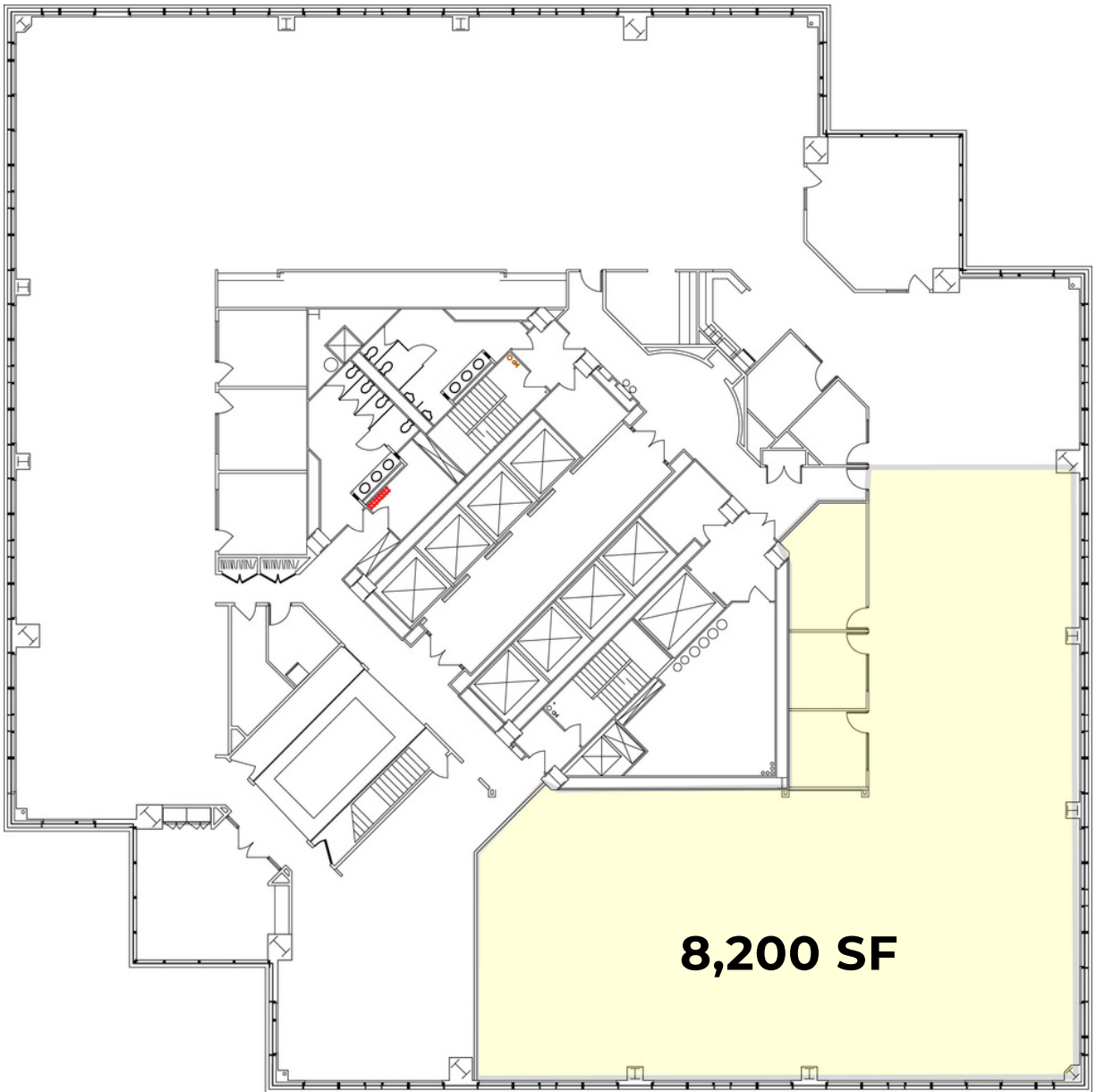


BUCKINGHAM PROPERTIES

(585) 295-9500 | [www.buckprop.com](http://www.buckprop.com) | 259 Alexander Street, Rochester, NY

# PREMIER OFFICE AT LEGACY TOWER

*1 Bausch and Lomb Place, Rochester, NY 14604*



BUCKINGHAM PROPERTIES

(585) 295-9500 | [www.buckprop.com](http://www.buckprop.com) | 259 Alexander Street, Rochester, NY