



Accelerating success.



# For Sale/Lease

**206 4th Avenue W.**  
Twin Falls, Idaho

**Tami Walker**  
+1 208 420 4601  
tami.walker@colliers.com

**Paul Kenny**  
+1 208 720 3125  
paul@kenny-bogue.com



*Manufacturing Zone*

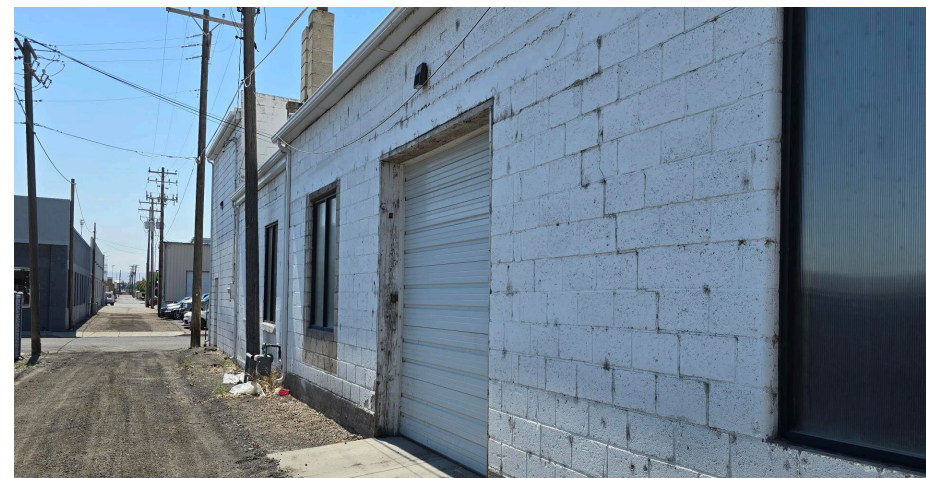


# Property Overview

Property Type	Industrial
Total Building Size	11,082 SF
Construction Type	Cinder block
Year Built	1941
Total AC	0.287 Acres
Zoning	M-2
Grade Level Drive-In Doors	Five 10 ft doors
Sale Price	\$943,000.00
Lease Rate	\$0.55 PSF
Property Access	Contact Agent

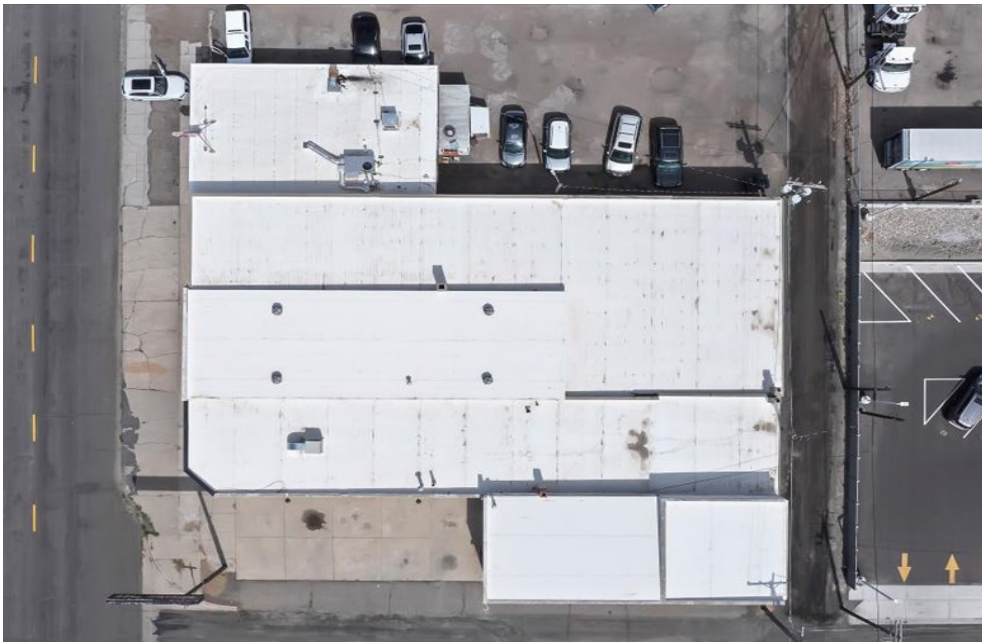
## Key Highlights

- Close proximity to US 30
- Manufacturing zone
- Easy access in and out of building
- Surrounded by other manufacturing and distribution service companies
- Downtown location





# Photo Gallery





# Location



205 Shoshone Street N, Suite 201  
Twin Falls, Idaho 83301  
+ 208 910 2006  
[colliers.com/idaho](http://colliers.com/idaho)

This document has been prepared by Colliers for advertising and general information only. Colliers makes no guarantees, representations or warranties of any kind, expressed or implied, regarding the information including, but not limited to, warranties of content, accuracy and reliability. Any interested party should undertake their own inquiries as to the accuracy of the information. Colliers excludes unequivocally all inferred or implied terms, conditions and warranties arising out of this document and excludes all liability for loss and damages arising there from. This publication is the copyrighted property of Colliers and/or its licensors(s). © 2025. All rights reserved. This communication is not intended to cause or induce breach of an existing listing agreement. Colliers Paragon, LLC.