



**PRICE REDUCTION - \$995,000**



# 1635 Burlington Jacksonville Road Springfield Township, NJ | Burlington County

29.44 ACRES OF LAND WITH POTENTIAL FOR DEVELOPMENT



## Contact Information:

 Julie Kronfeld, SIOR  
856-802-6516  
 [julie.kronfeld@naimertz.com](mailto:julie.kronfeld@naimertz.com)

 Rebecca Ting, SIOR  
856-234-9600 x 206  
 [rebecca.ting@naimertz.com](mailto:rebecca.ting@naimertz.com)

NO WARRANTY OR REPRESENTATION, EXPRESS OR IMPLIED, IS MADE AS TO THE ACCURACY OF THE INFORMATION CONTAINED HEREIN, AND THE SAME IS SUBMITTED SUBJECT TO ERRORS, OMISSIONS, CHANGE OF PRICE, RENTAL OR OTHER CONDITIONS, PRIOR SALE, LEASE OR FINANCING, OR WITHDRAWAL WITHOUT NOTICE, AND OF ANY SPECIAL LISTING CONDITIONS IMPOSED BY OUR PRINCIPALS NO WARRANTIES OR REPRESENTATIONS ARE MADE AS TO THE CONDITION OF THE PROPERTY OR ANY HAZARDS CONTAINED THEREIN ARE ANY TO BE IMPLIED.

 **NAI Mertz** | 21 Roland Avenue  
Mount Laurel, NJ 08054  
+1 856 234 9600 | [naimertz.com](http://naimertz.com)

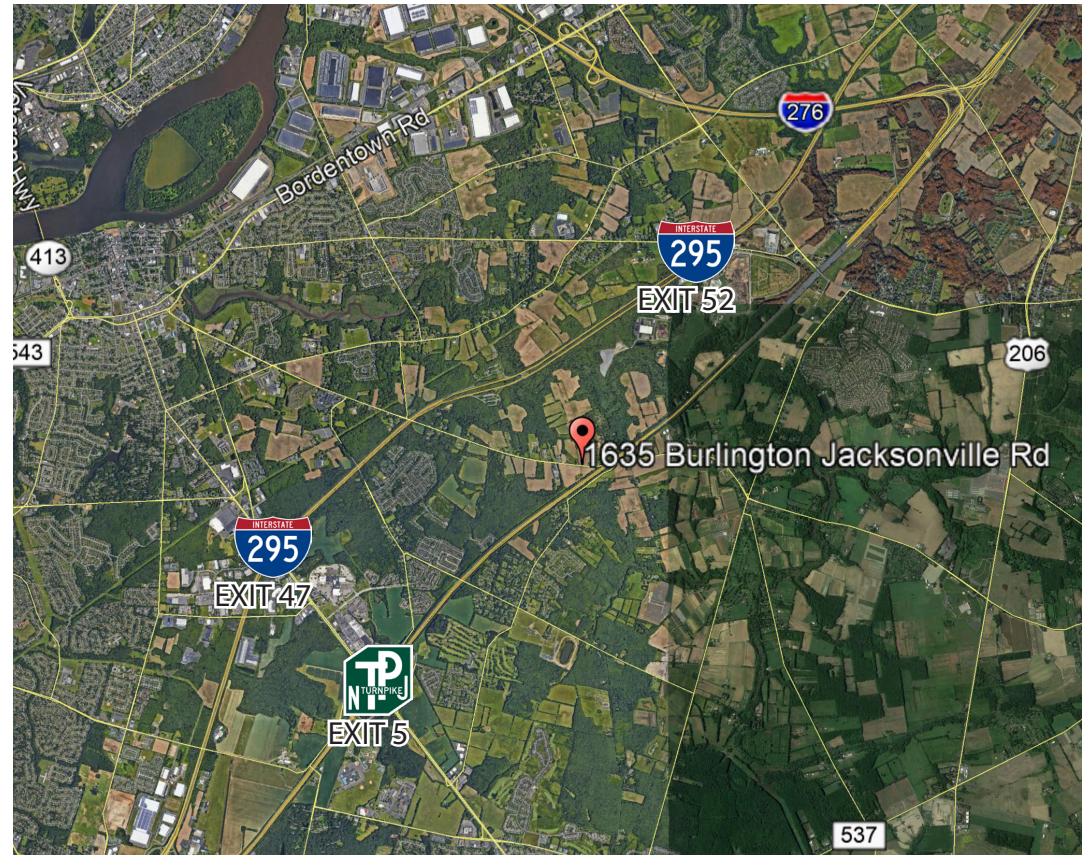
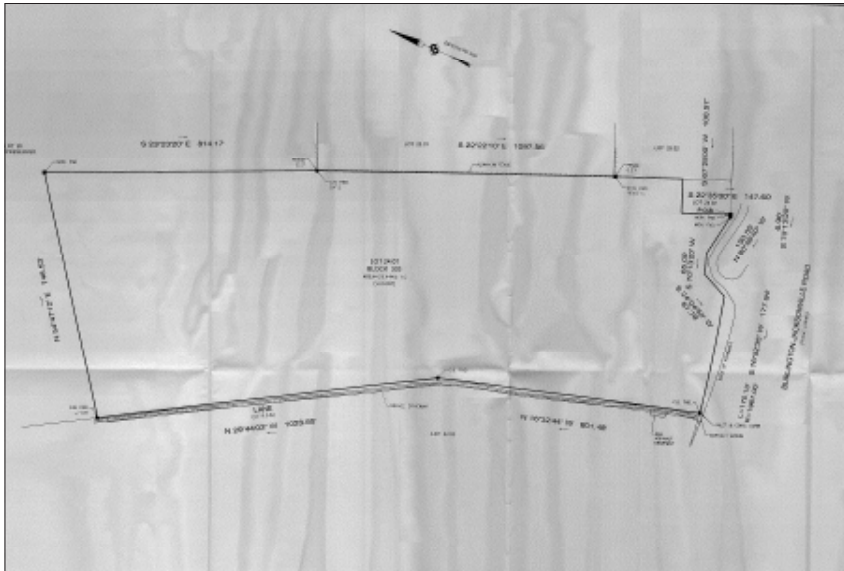
**NAI Mertz**

# 1635 Burlington Jacksonville Road | Springfield Twp, NJ

## Property Information

ACREAGE	29.44 acres
PARCEL/APN#	0334_303_24.01_QFARM
TAXES	\$682.65 (2019, currently taxed as QFARM)
ZONING	AR-10: Agricultural Rural District
POTENTIAL USE	<ul style="list-style-type: none"> <li>• Medical marijuana agriculture</li> <li>• Agriculture</li> <li>• Solar farm</li> <li>• Mini farm/ residential development</li> </ul> (Full zoning code available upon request)
MISCELLANEOUS	Located next to Arram Dawn Farm horse riding school Many farms, farmers market's and nurseries nearby

## Tax Map



## Location

Just off Jacksonville Road. In close proximity to I-295 (Exit 47 & 52) and the NJ Turnpike (Exit 5). 5.5 miles to Pennsylvania via the Burlington-Bristol Bridge. 4.2 mi from Town Crossing Shopping Center which includes Target, The Home Depot, Regal Cinema, hotels and dining options

## Demographics

	1 Mile	3 Mile	5 Mile
Population	3,211	34,386	132,280
Total Households	3,195	34,065	132,114
Median HH Income	\$106,944	\$77,578	\$69,691