

# MRG

For Lease



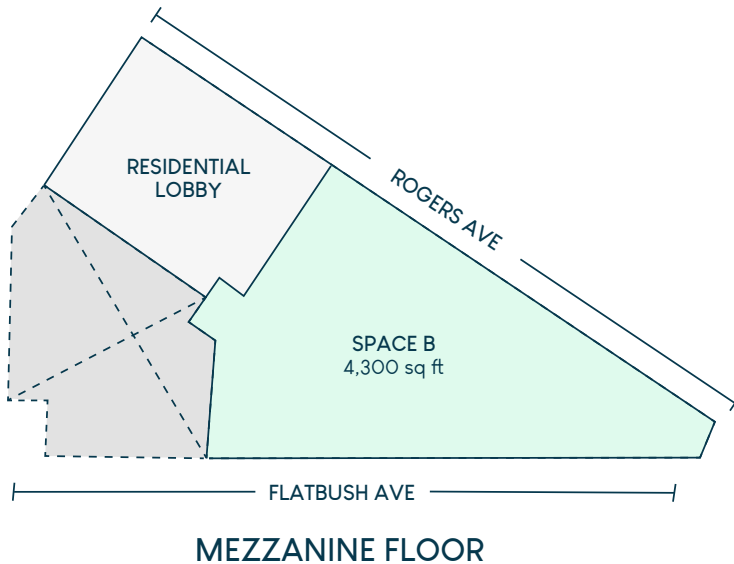
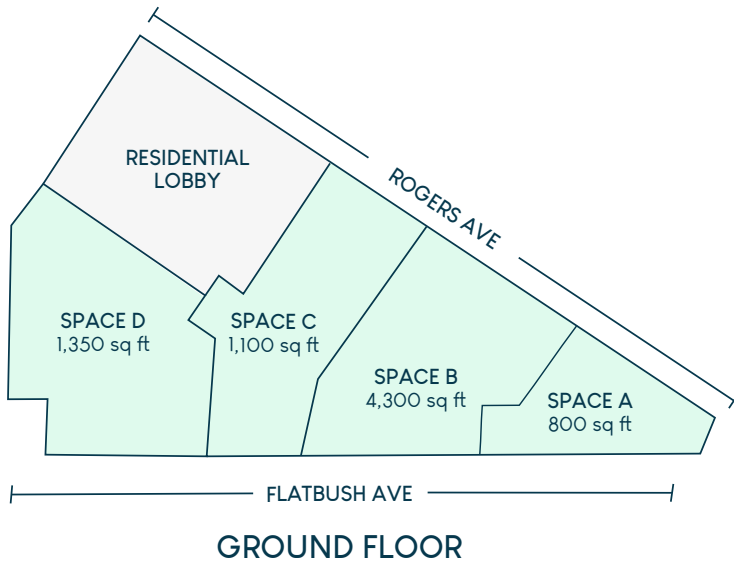
# 1407 Flatbush Ave

Restaurant / Cafe For Lease

800 - 7,365 sq ft | 1407 Flatbush Ave | Brooklyn, NY 11210

# MRG

# FLOOR PLANS



## OVERVIEW

- **Address:** 1407 Flatbush Ave, Brooklyn, NY 11210
- **Cross Streets:** Farragut Road and East 26th Street
- **Neighborhood:** Flatbush

## SPACE DETAILS

- **Size:** 800 – 7,365 sq ft
- **Space:** Space A: 800 sq ft, Space B: 4,300 sq ft, Space C: 1,100 sq ft, Space D: 1,350 sq ft
- **Ceiling Height:** 16 ft
- **Frontage:** 125 ft

## HIGHLIGHTS

- 210 ft of wrap around frontage
- HVAC
- Built out kitchen
- 3,300 sq ft mezzanine
- Divisible
- High ceilings

## TRANSPORTATION

- 5 min walk to B8, B49, 5 min walk to B103
- 6 min walk to train 2, 5, 14 min walk to train B, Q
- 28 min drive to LGA, 23 min drive to JFK, 35 min drive to EWR

## DEMOGRAPHICS

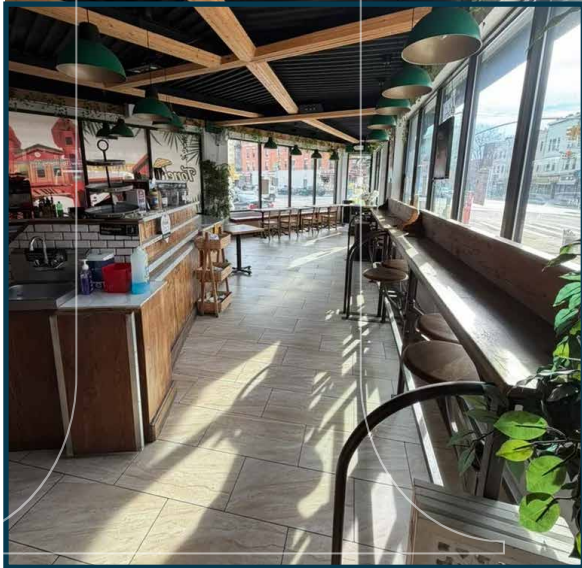
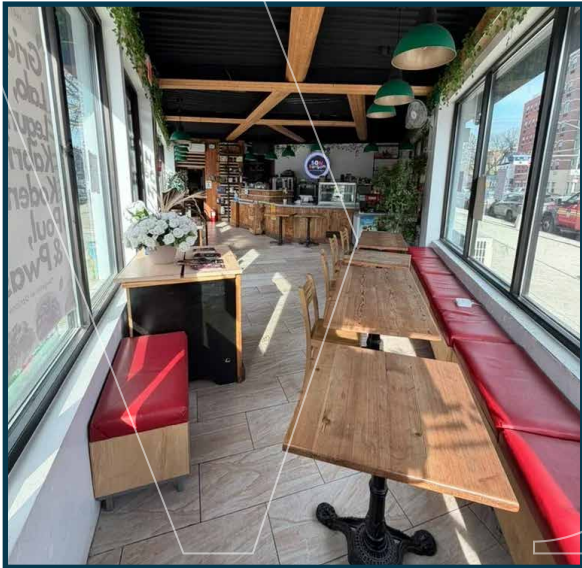
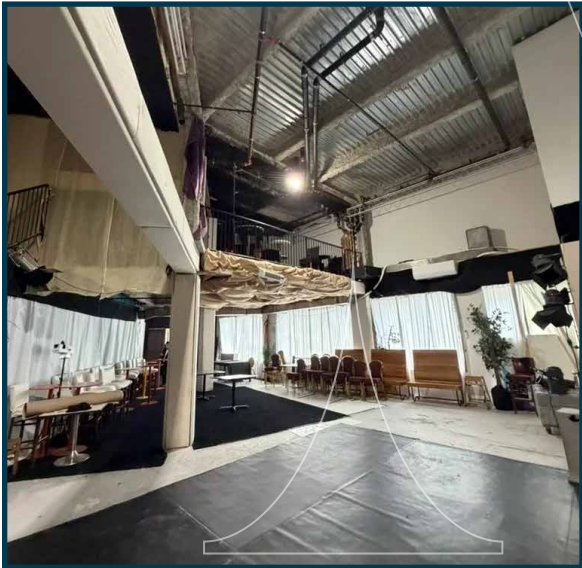
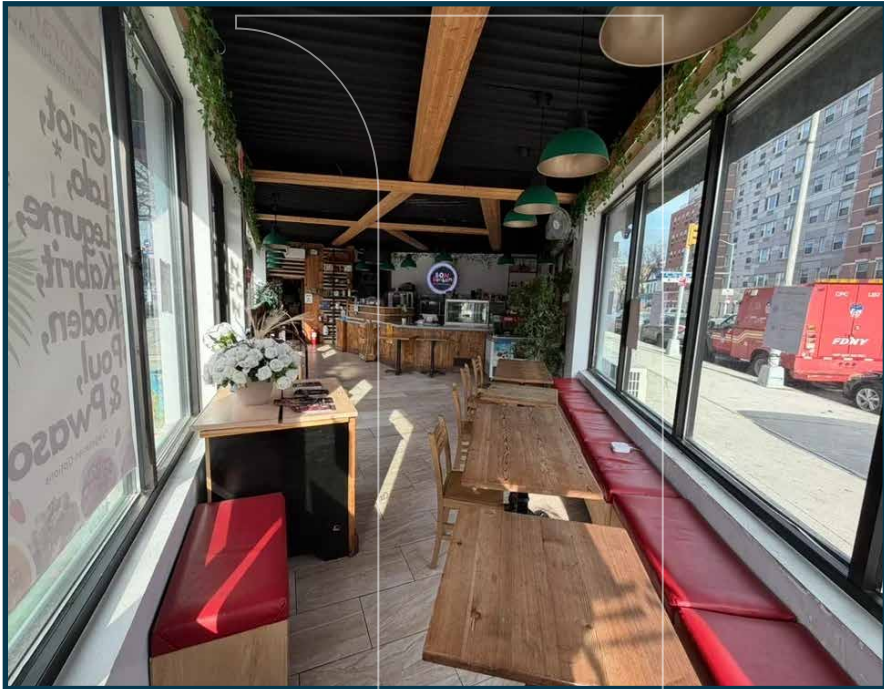
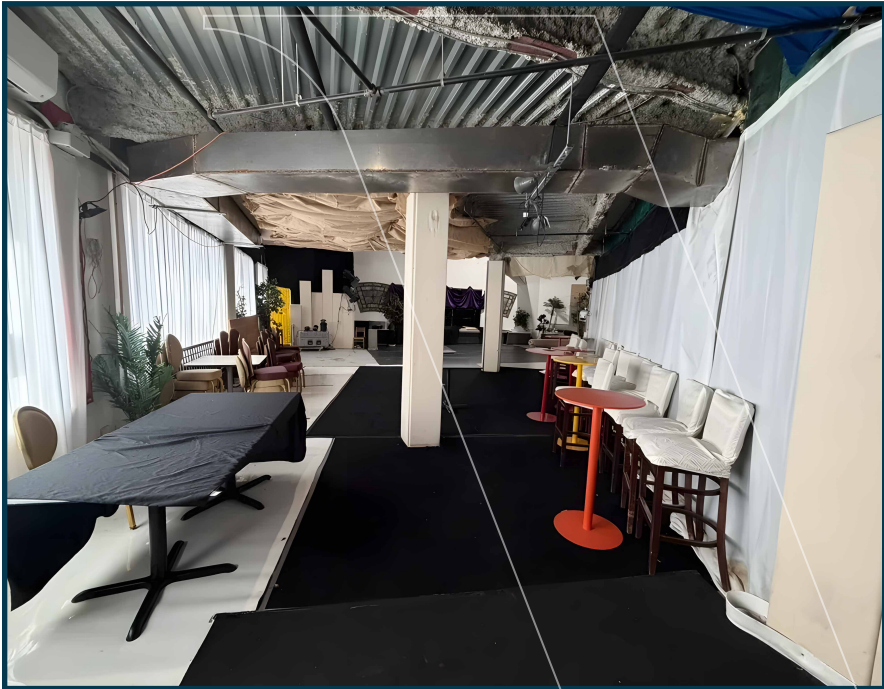
- **Population:** 153,391
- **Median Household Income:** \$70,416
- **Median Home Value:** \$985,000

## NEIGHBORS

YMCA, Woodstack, Footprints cafe, YoYo Chicken, Regency Health and Home Care, Flatbush Veterinary Clinic, Avanti, Fleur De Lis Beauty & Esthetics, Talotsing, Yellowstone Medical



INTERIOR PHOTOS



# MRG

## 1407 Flatbush Ave Brooklyn, NY 11210

FOR MORE INFORMATION  
PLEASE CONTACT:

**MOSHE AKIVA**

212-314-4684 Ext. 103  
Moshe@mrgny.com

**VICTOR SAFENIA**

212-314-4684 Ext. 107  
Victors@mrgny.com

