

JO.CO. BANK SITE-FOR SALE

Retail Lots FOR SALE Zone CP-2

Retail Pad Site Zoned CP-2



DEMOGRAPHICS

One Mile

Income	\$89,479
Household Information	5,340
Population Amount	11,517

Three Mile

Income	\$98,559
Household Information	38,527
Population Amount	90,724



AMMENITIES

- Prime Income & Population Market-
- Major Johnson County Traffic Artery-
- Adjacent to Kansas City Public Credit Union, Target Costco St. Lukes Hospital, Overland Park Police and other major retailers
- Zoned CP-2-Zoning



LS COMMERCIAL REAL ESTATE

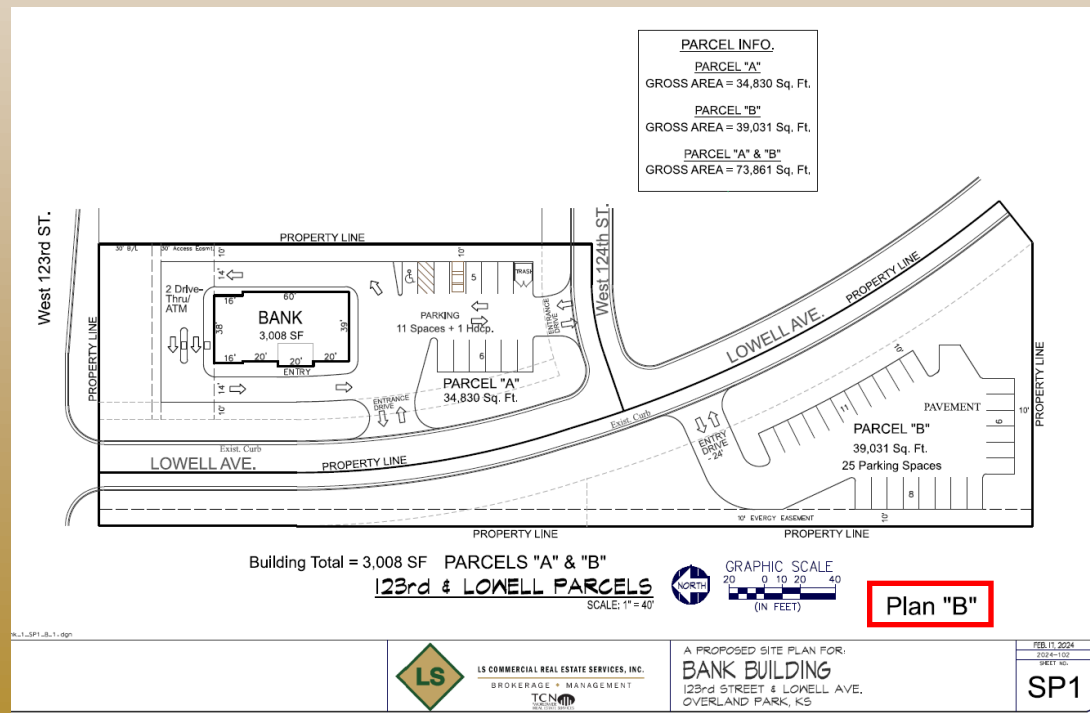
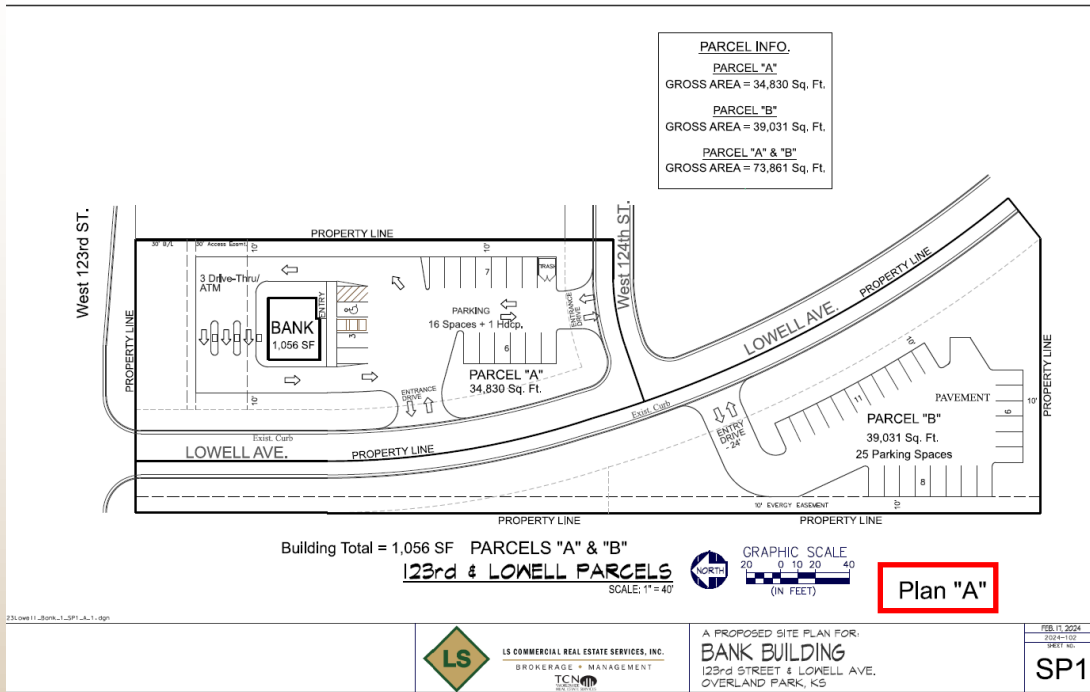
BROKERAGE | DEVELOPMENT | MANAGEMENT

CONTACTS | **John Smith** smith@lscr.com **Scott Chapin** schapin@lscr.com

8301 W.125TH STREET | SUITE 210 | OVERLAND PARK, KANSAS 66213
P 913.681.5888 | F 913.681.7869 | www.lscr.com

JO.CO. BANK SITE-FOR SALE

Retail Lots FOR SALE Zone CP-2

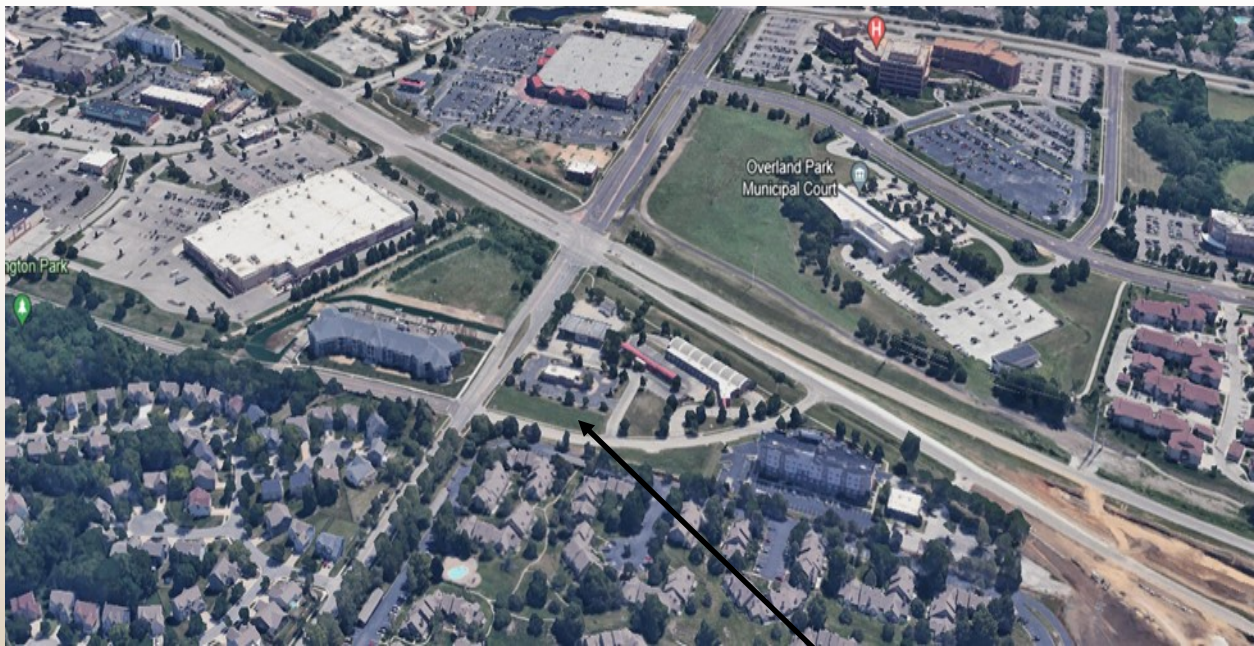


LS COMMERCIAL REAL ESTATE

BROKERAGE | DEVELOPMENT | MANAGEMENT

CONTACTS | **John Smith** smith@lscr.com **Scott Chapin** schapin@lscr.com

8301 W.125TH STREET | SUITE 210 | OVERLAND PARK, KANSAS 66213
 P 913.681.5888 | F 913.681.7869 | www.lscr.com



LS COMMERCIAL REAL ESTATE

BROKERAGE | DEVELOPMENT | MANAGEMENT

CONTACTS | **John Smith** smith@lscr.com **Scott Chapin** schapin@lscr.com

8301 W.125TH STREET | SUITE 210 | OVERLAND PARK, KANSAS 66213
P 913.681.5888 | F 913.681.7869 | www.lscr.com