

Medical | For Lease

CBRE

10845 Kuykendahl

10845 Kuykendahl Road
The Woodlands, TX 77382
www.cbre.com/properties

3,158 SF 2nd Generation Dental Space Available for Lease



10845 Kuykendahl

10845 Kuykendahl Road | The Woodlands, TX 77382



Highlights

Single-story, multi-tenant medical office building,
with one space left

- 2nd generation dental space consisting of 3,158 SF
- Featuring 10 exam rooms, 2 doctor's offices, 3 restrooms, and a large waiting area
- Located on the hard corner of Kuykendahl Road and Flintridge Drive, just south of Woodlands Pkwy, in The Woodlands
- Surrounded by numerous residential communities including Creekside
- Building signage available

3,158

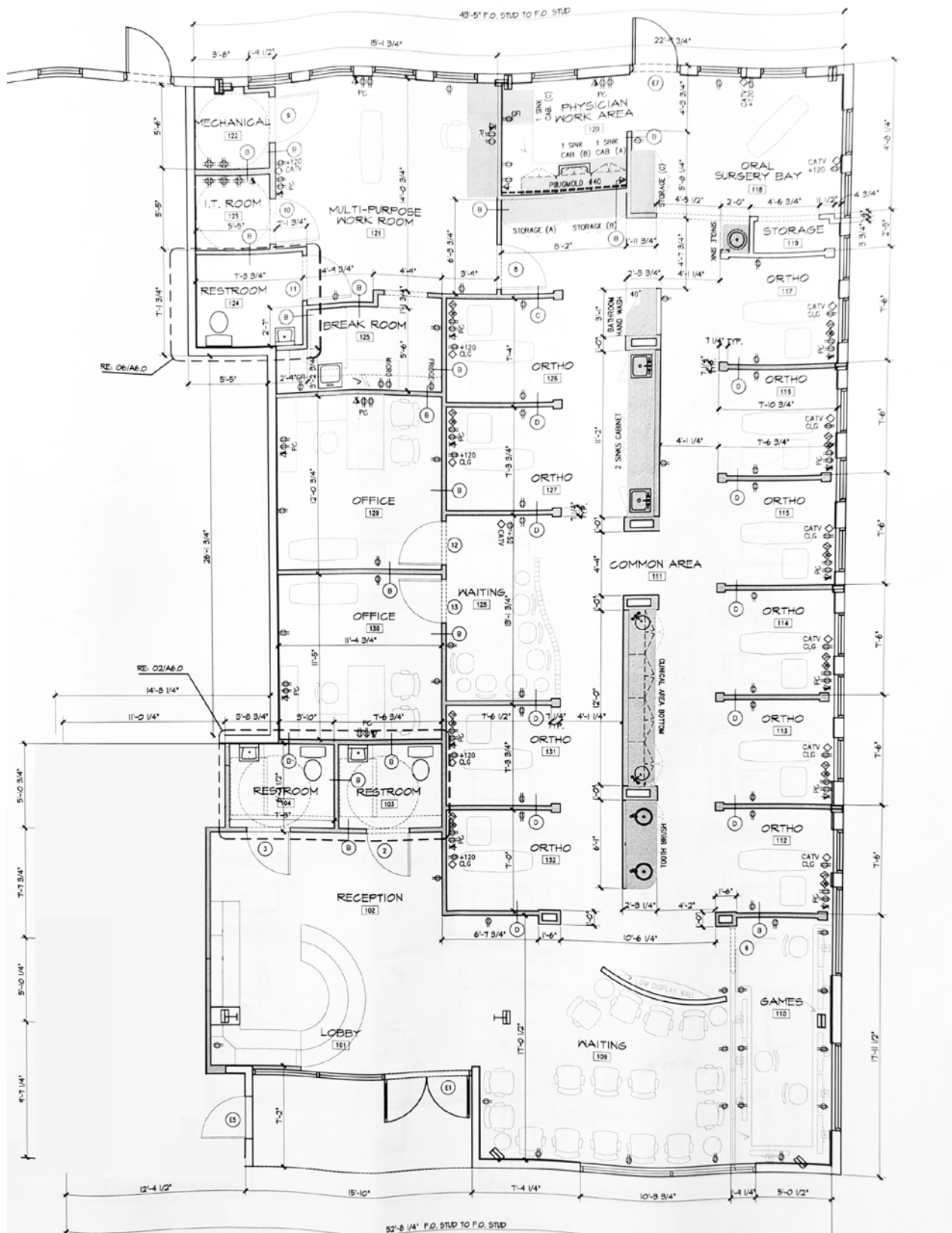
Suite SF

4.5

Parking Ratio (per 1,000)

2015

Year Built



10845 Kuykendahl
10845 Kuykendahl Road | The Woodlands, TX 77382

Location



Demographics

	1 MILE	3 MILES	5 MILES
2024 Population	6,793	79,717	170,037
Daytime Population	6,501	78,469	169,983
Average Household Income	\$276,615	\$214,762	\$184,121
Median Home Value	\$681,973	\$510,495	\$464,453

For Lease



10845 Kuykendahl

10845 Kuykendahl Road | The Woodlands, TX 77382

For Lease



Contact Us

Max Lozmack

Vice President

+1 713 598 9393

max.lozmack@cbre.com

© 2025 CBRE, Inc. All rights reserved. This information has been obtained from sources believed reliable, but has not been verified for accuracy or completeness. You should conduct a careful, independent investigation of the property and verify all information. Any reliance on this information is solely at your own risk. CBRE and the CBRE logo are service marks of CBRE, Inc. All other marks displayed on this document are the property of their respective owners, and the use of such logos does not imply any affiliation with or endorsement of CBRE. Photos herein are the property of their respective owners. Use of these images without the express written consent of the owner is prohibited.

www.cbre.com/properties

CBRE