



# Cold Storage Facility



**HIGH STREET**  
LOGISTICS PROPERTIES

## For Lease 48,060 SF

### Strategic Location

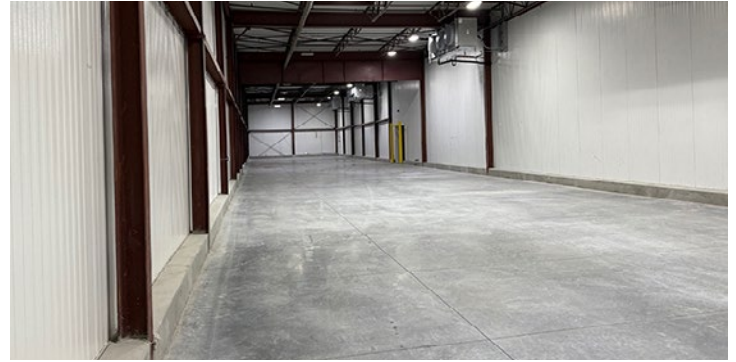
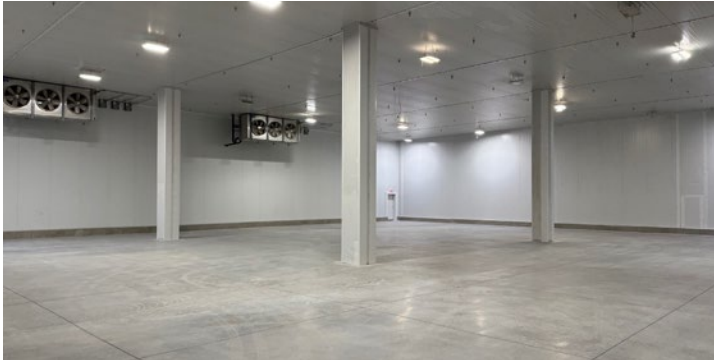
- **Only 1.5 miles to I-495**  
Capital Beltway
- Located near Washington, DC, ideal for **serving the broader DMV market** including Northern Virginia and Baltimore.
- Situated in the **Hampton Park** industrial park

## 9001 E. Hampton Drive Capitol Heights, MD

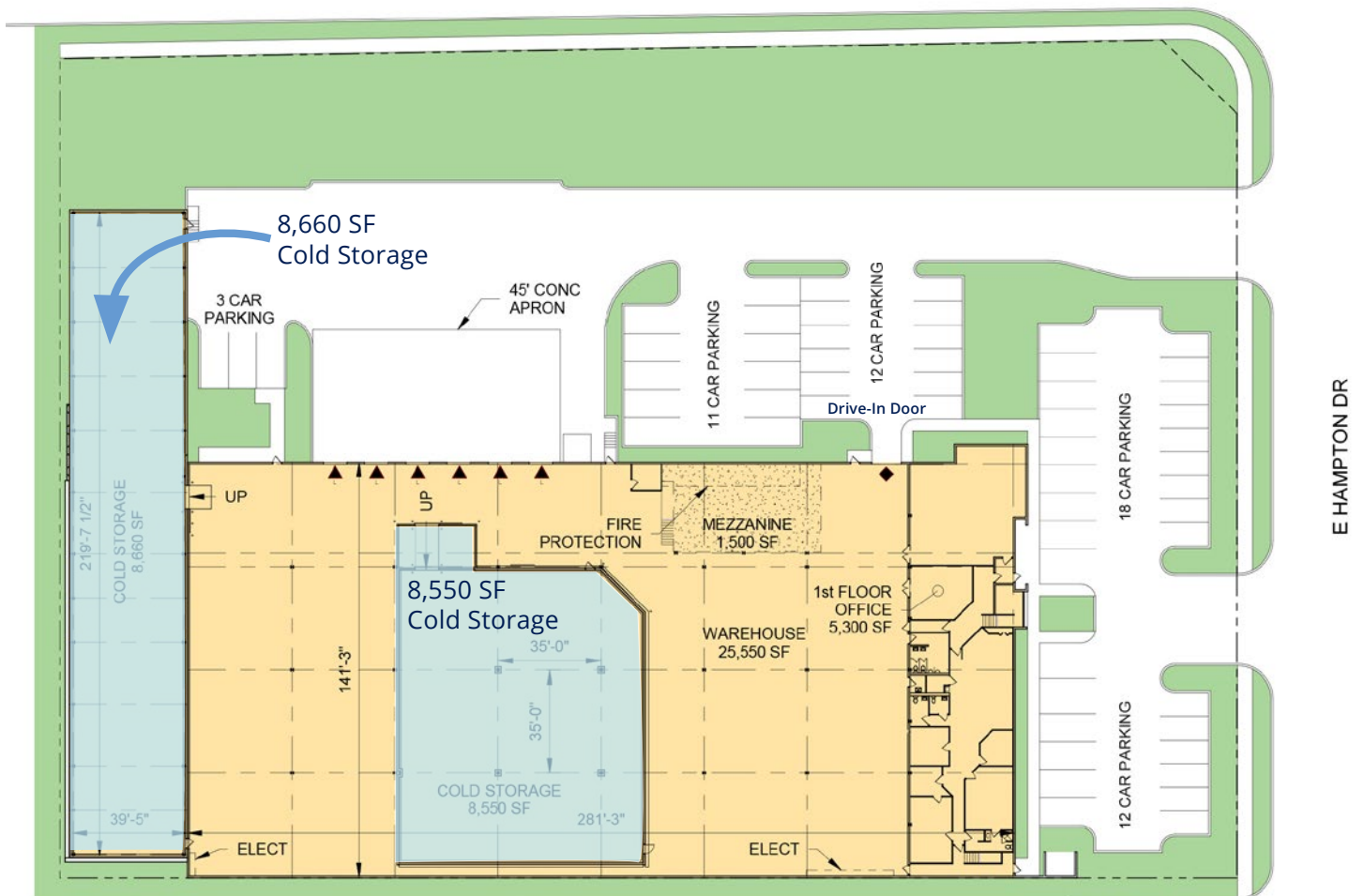
### Building Features

- 17,210 sf Freezer Space
- 25,550 sf Warehouse
- 5,300 sf Office
- 6 Loading Docks
- 1 Drive-in
- 24' Clear
- Power @ 2,000 amps 120/208
- Zoned I-E
- 56 Surface Parking Spaces
- 2.58 Acre Lot

# Site Plan



HAMPTON PARK BLVD



**Brian Watts**

Executive Vice President  
+1 410 319 2408  
brian.watts@colliers.com

**Jason Sullivan, SIOR**

Executive Vice President  
+1 410 319 2409  
jason.sullivan@colliers.com

**Melissa Parrish**

Associate Vice President  
+1 410 319 2412  
melissa.parrish@colliers.com

**Brian Siegel, SIOR**

Executive Vice President  
+1 410 319 2410  
brian.siegel@colliers.com

**Thomas Gentner**

Executive Vice President  
+1 410 319 2407  
tom.gentner@colliers.com

7001 Columbia Gateway Drive | Suite 220 | Columbia, MD 21046 | P: +1 410 319 2411 | colliers.com

Copyright © 2025 Colliers International. Information herein has been obtained from sources deemed reliable, however its accuracy cannot be guaranteed. The user is required to conduct their own due diligence and verification.

**Colliers**