

100 CLINTON SQUARE BUILDING

OFFICE BUILDING FOR LEASE

JOSHUA W. PODKAMINER, SIOR, CCIM
315.423.9390
jwp@jwpcommercial.com

J|W|P
COMMERCIAL

FOR LEASE | 100 CLINTON SQUARE BUILDING
EXECUTIVE SUMMARY



OFFERING SUMMARY

Lease Rate:	\$15.50 - 18.50 SF/yr (MG)
Building Size:	60,701 SF
Available SF:	291 - 7,000 SF
Year Built:	1984
Renovated:	2018
Market:	Syracuse, NY - Onondaga County
Submarket:	Central Business District

PROPERTY OVERVIEW

The 100 Clinton Square Building is a multi-tenant Class A Office Building located on the Northeast Corner of Clinton Square that continues to be one of the most convenient locations in Downtown Syracuse.

PROPERTY HIGHLIGHTS

- Traditional and Modern Build-out Options
- Common Area Conference Room (Fully renovated in 2017)
- Common Area Fitness Center
- Mother's Room
- Excellent Onsite Parking (221 Spaces)
- Full-Time Lot Attendant
- Onsite Management
- Views Overlooking Downtown and Clinton Square

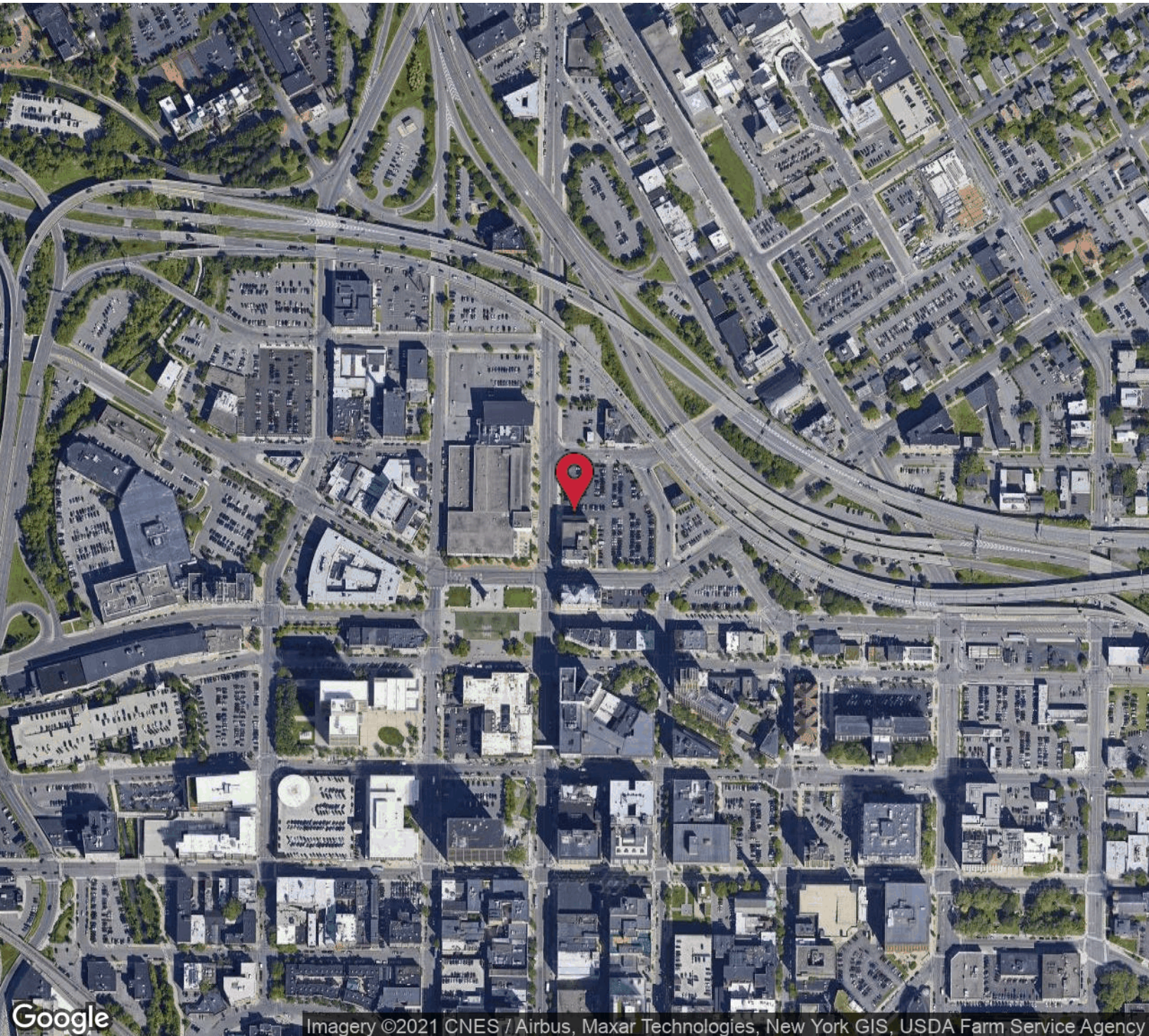
JOSHUA W. PODKAMINER, SIOR, CCIM
315.423.9390
jwp@jwpcommercial.com

FOR LEASE | 100 CLINTON SQUARE BUILDING
FITNESS CENTER PHOTOS



JOSHUA W. PODKAMINER, SIOR, CCIM
315.423.9390
jwp@jwpcommercial.com

FOR LEASE | 100 CLINTON SQUARE BUILDING
LOCATION MAPS

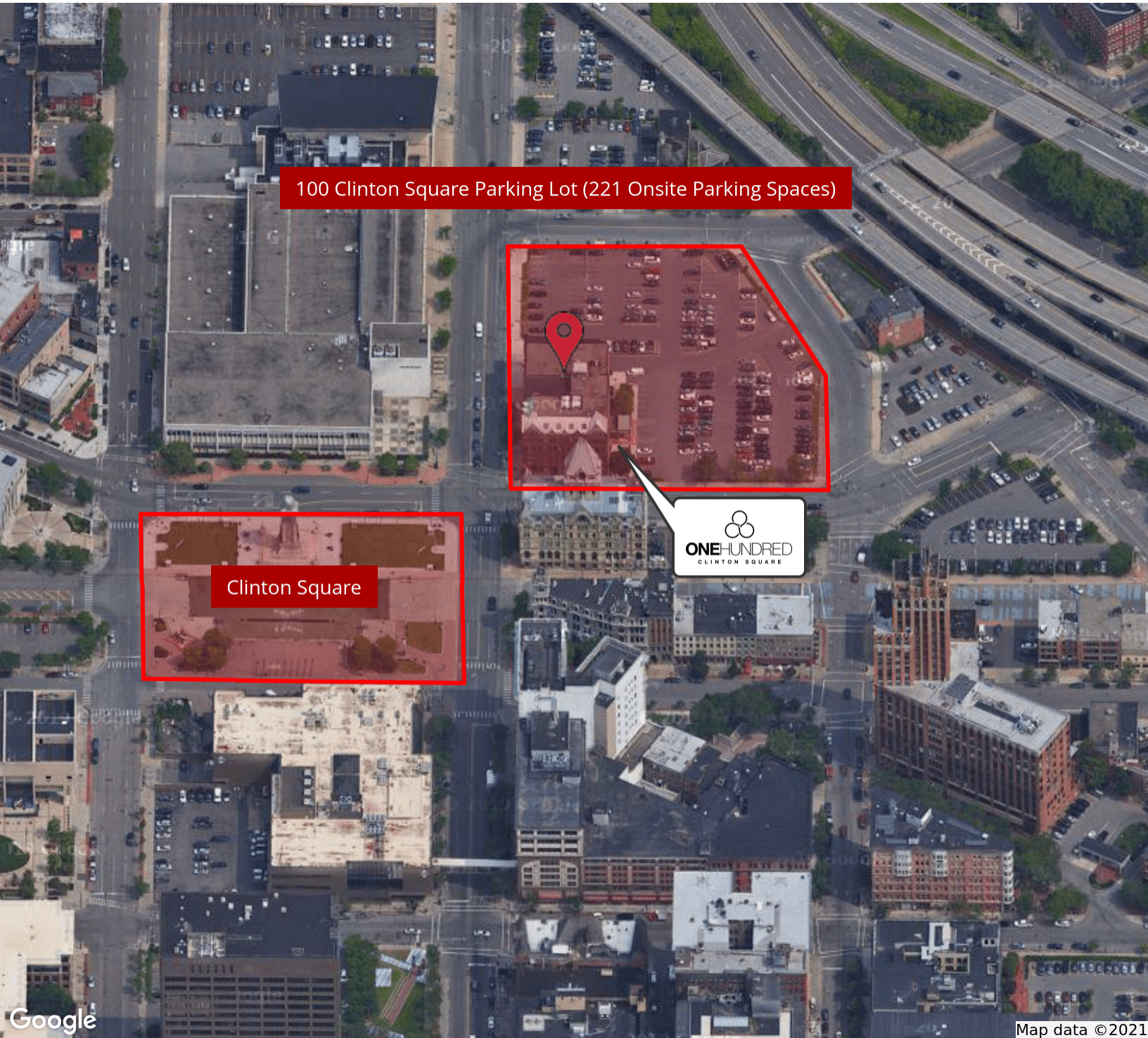


Imagery ©2021 CNES / Airbus, Maxar Technologies, New York GIS, USDA Farm Service Agency

JOSHUA W. PODKAMINER, SIOR, CCIM
315.423.9390
jwp@jwpcommercial.com

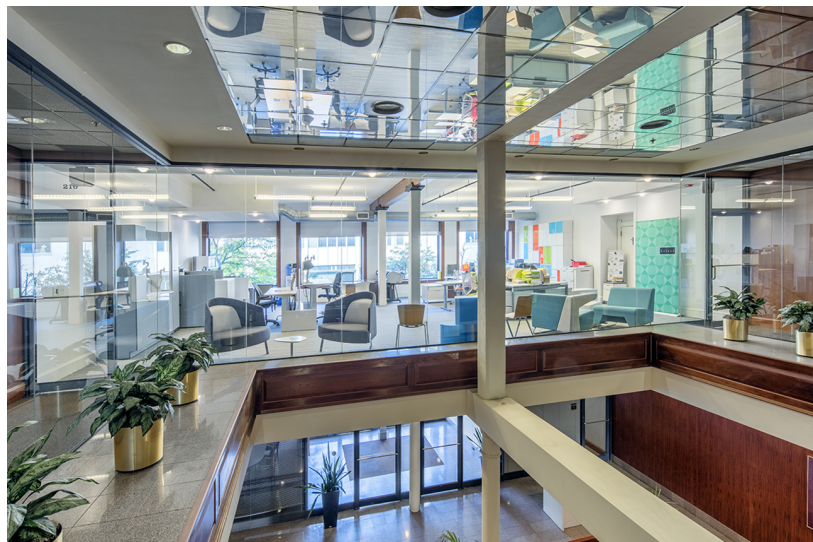
No warranty, express or implied, is made as to the accuracy of any information contained herein. All information contained herein is from sources deemed to be reliable and is submitted subject to errors, omissions, changes in price or other conditions, and withdrawal without notice. Principals, and agents for principals, should not rely solely upon the information contained herein.

FOR LEASE | 100 CLINTON SQUARE BUILDING
AERIAL



JOSHUA W. PODKAMINER, SIOR, CCIM
315.423.9390
jwp@jwpcommercial.com

FOR LEASE | 100 CLINTON SQUARE BUILDING
ADDITIONAL PHOTOS



JOSHUA W. PODKAMINER, SIOR, CCIM
315.423.9390
jwp@jwpcommercial.com

FOR LEASE | 100 CLINTON SQUARE BUILDING
ADDITIONAL PHOTOS



JOSHUA W. PODKAMINER, SIOR, CCIM
315.423.9390
jwp@jwpcommercial.com

FOR LEASE | 100 CLINTON SQUARE BUILDING
CONFERENCE CENTER PHOTOS



JOSHUA W. PODKAMINER, SIOR, CCIM
315.423.9390
jwp@jwpcommercial.com



JOSHUA W. PODKAMINER, SIOR, CCIM

Managing Member

jwp@jwpcommercial.com

Direct: **315.423.9390** | Cell: **315.415.6030**

PROFESSIONAL BACKGROUND

Joshua W. Podkaminer, SIOR, CCIM is a native of Syracuse, New York. Josh and his wife, Rebecca, have four children and live in the nearby Jamesville - Dewitt area. Josh is active with his family and the community. Hobbies include travel, fly fishing, gardening (vegetable and pumpkin patch,) and a focus of being involved in his children's activities. Josh grew up around the commercial construction business and started working as a laborer on construction sites at the age of 14, which plays a significant role in his interest, and many friendships, with people in the construction trades. After graduating from Hobart College in 2000, Josh joined Montgomery Partners / Emhoff Associates as a real estate salesperson and quickly worked towards his real estate brokerage license. He purchased his first residential rental property in 2000, which expanded into a student housing business, and associated management, with properties immediately adjacent to Syracuse University. Real estate ownership and development has continued with projects including the Franklin Center Office Building, in the heart of Franklin Square, and OneGroup Center at 706 North Clinton Street in the Inner Harbor. The brokerage and management businesses were consolidated, and renamed, in 2015 into JWP Commercial, which today provides real estate brokerage, management, development, and consulting services with a focus throughout the Syracuse, NY and Onondaga County marketplace.

EDUCATION

Fayetteville-Manlius Schools, Manlius, New York
Lawrenceville School, Lawrenceville, New Jersey
Hobart and William Smith Colleges, Geneva, New York

MEMBERSHIPS

SIOR (Society of Industrial and Office Realtors)
CCIM (Certified Commercial Investment Member)

JWP COMMERCIAL
126 North Salina Street
Syracuse, NY 13202
315.415.6030