

OFFICE PROPERTY // FOR LEASE

300 SF EXECUTIVE SUITE - RARE OPPORTUNITY IN "THE VILLAGE" OF GROSSE POINTE

16824 KERCHEVAL PLACE
GROSSE POINTE, MI 48230



- 300 SF executive suite available
- Open floor plan with two (2) private offices
- Aggressive gross rental rate
- Private parking lot at the rear of the building
- Surrounded by popular restaurants, cafes, and business services
- Minutes from Downtown Detroit & I-94 Expressway



P.A. COMMERCIAL
Corporate & Investment Real Estate

26555 Evergreen Road, Suite 1500
Southfield, MI 48076
248.358.0100

pacommercial.com

We obtained the information above from sources we believe to be reliable. However, we have not verified its accuracy and make no guarantee, warranty or representation about it. It is submitted subject to the possibility of errors, omissions, change of price, rental or other conditions, prior sale, lease or financing, or withdrawal without notice. We include projections, opinions, assumptions or estimates for example only, and they may not represent current, past or future performance of the property. You and your tax and legal advisors should conduct your own investigation of the property and transaction.

16824 KERCHEVAL PLACE, GROSSE POINTE, MI 48230 // FOR LEASE

EXECUTIVE SUMMARY



Lease Rate	\$800 PER MONTH (GROSS)
-------------------	--------------------------------

OFFERING SUMMARY

Building Size:	13,000 SF
Available SF:	300 SF
Lot Size:	0.17 Acres
Year Built:	1920
Renovated:	2020
Zoning:	C-2
Market:	Detroit
Submarket:	The Pointes/Harper Woods

PROPERTY OVERVIEW

Rare opportunity to lease a small office space in "The Village" of Grosse Pointe. This exceptional property offers a second-floor 300 SF executive suite with an open floor plan with two private offices. Enjoy the convenience of a private parking lot at the rear of the building and take advantage of an aggressive gross rental rate. With its desirable location just minutes from Downtown Detroit and the I-94 Expressway, this property provides the ideal combination of accessibility and amenities for your business needs.

LOCATION OVERVIEW

Grosse Pointe Village, nestled along the picturesque shores of Lake St. Clair, is a charming community known for its historic architecture, tree-lined streets, and affluent demographic. Grosse Pointe offers a unique blend of small-town charm with close proximity to the bustling city of Detroit. The Village stands out for its walkable downtown area, which is home to boutique shops, restaurants, and a variety of professional services. Situated just 10 miles from downtown Detroit, businesses have easy access to the amenities and opportunities of the larger city while maintaining a quieter, more personal atmosphere.



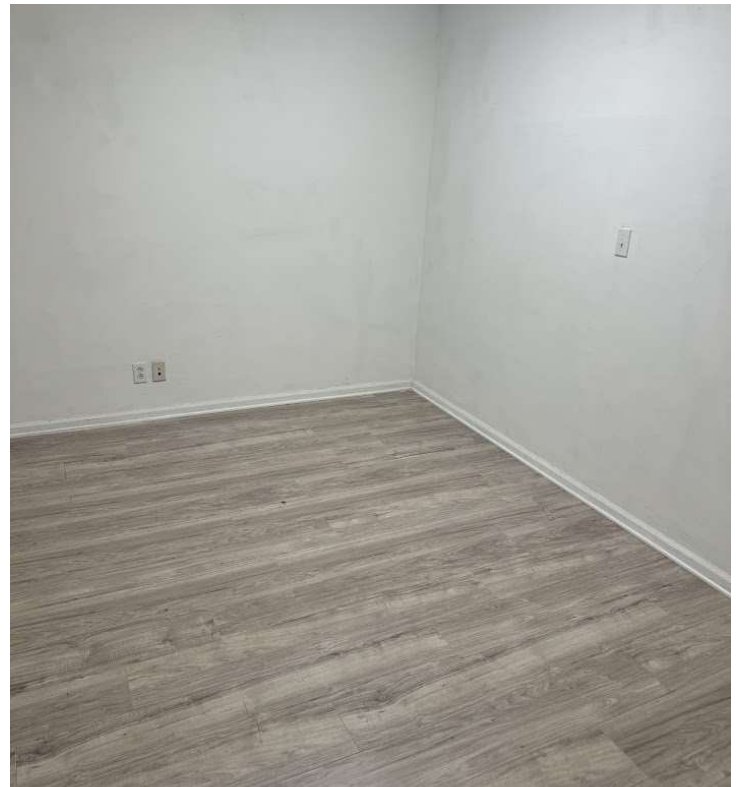
John E. De Wald, CPA PARTNER
D: 248.663.0504 | C: 313.510.3777
johnde@pacommercial.com

Phillip Myers SENIOR ASSOCIATE
D: 248.281.9904 | C: 586.242.4047
phil@pacommercial.com

We obtained the information above from sources we believe to be reliable. However, we have not verified its accuracy and make no guarantee, warranty or representation about it. It is submitted subject to the possibility of errors, omissions, change of price, rental or other conditions, prior sale, lease or financing, or withdrawal without notice. We include projections, opinions, assumptions or estimates for example only, and they may not represent current, past or future performance of the property. You and your tax and legal advisors should conduct your own investigation of the property and transaction.

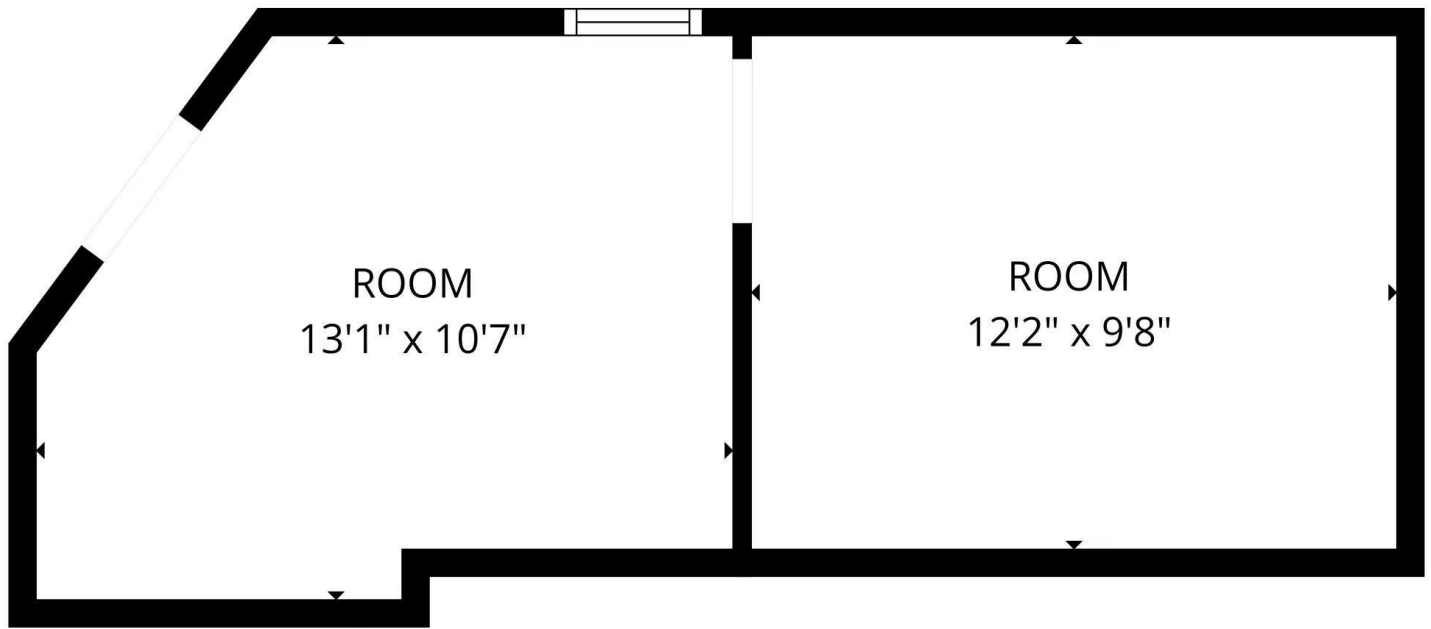
16824 KERCHEVAL PLACE, GROSSE POINTE, MI 48230 // FOR LEASE

ADDITIONAL PHOTOS



16824 KERCHEVAL PLACE, GROSSE POINTE, MI 48230 // FOR LEASE

FLOOR PLANS



Total GLA: 276 sq. ft | Total: 276 sq. ft
1st floor: 276 sq. ft

FLOOR PLAN CREATED BY CUBICASA APP. MEASUREMENTS DEEMED HIGHLY RELIABLE BUT NOT GUARANTEED.

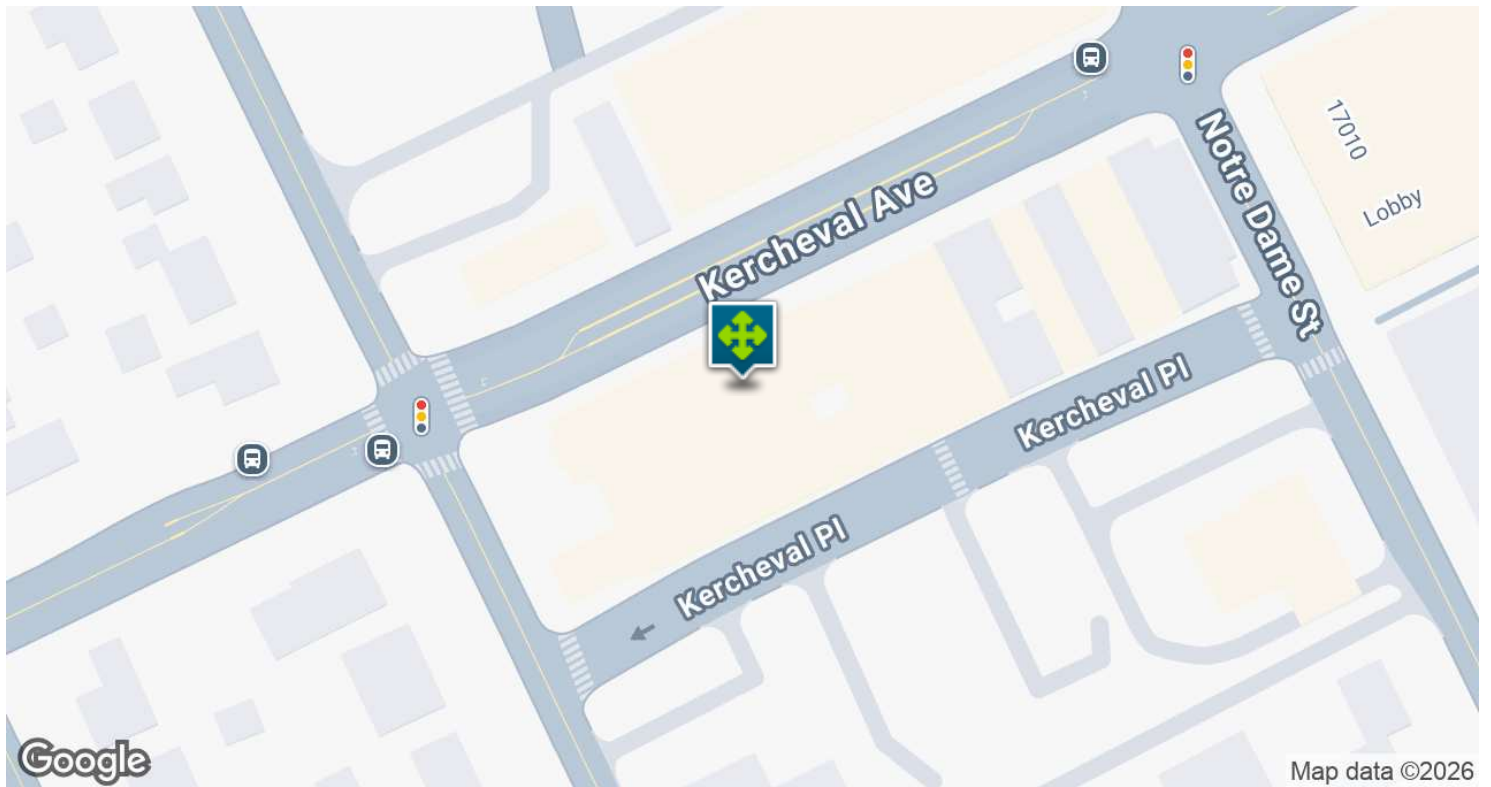
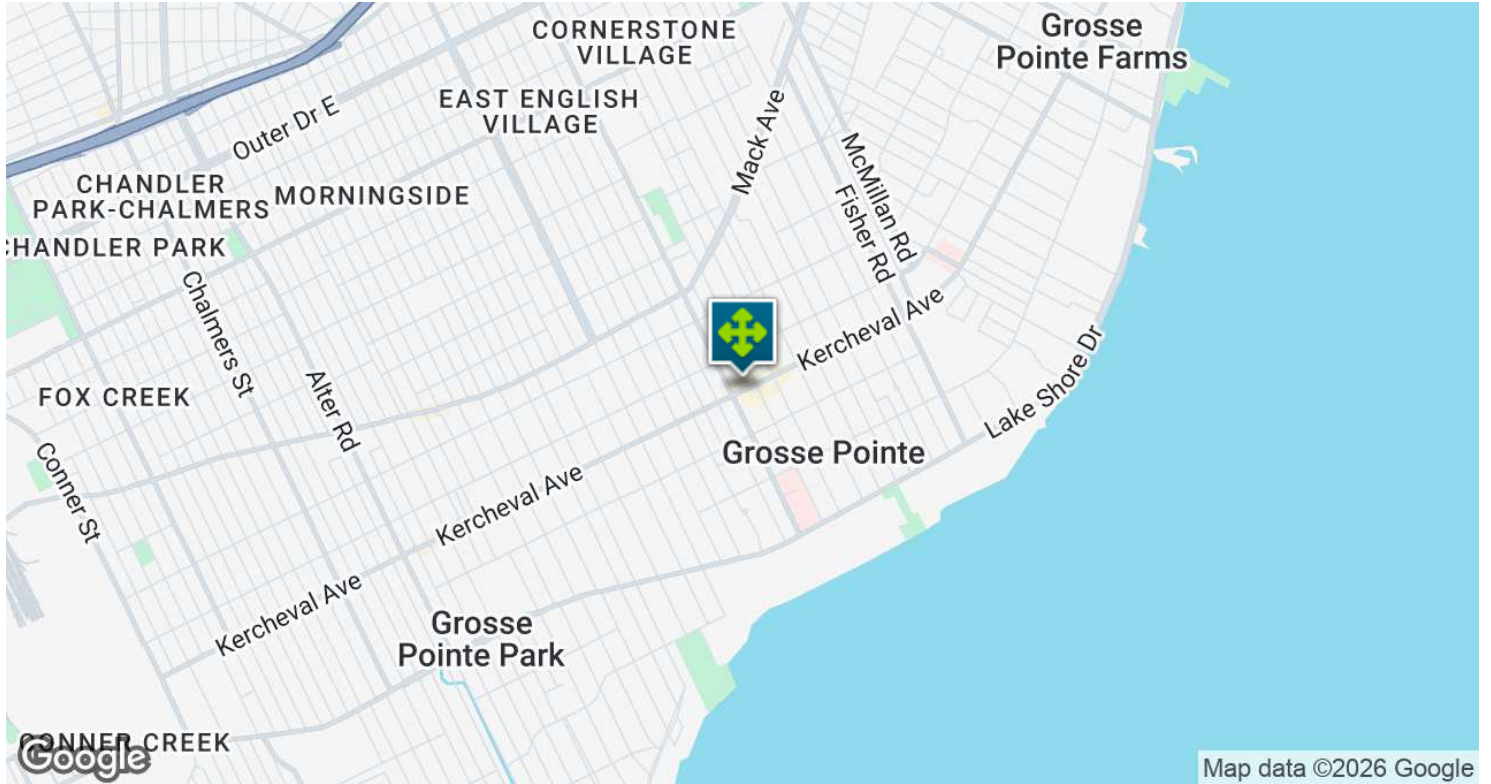
16824 KERCHEVAL PLACE, GROSSE POINTE, MI 48230 // FOR LEASE

RETAILER MAP



16824 KERCHEVAL PLACE, GROSSE POINTE, MI 48230 // FOR LEASE

LOCATION MAP



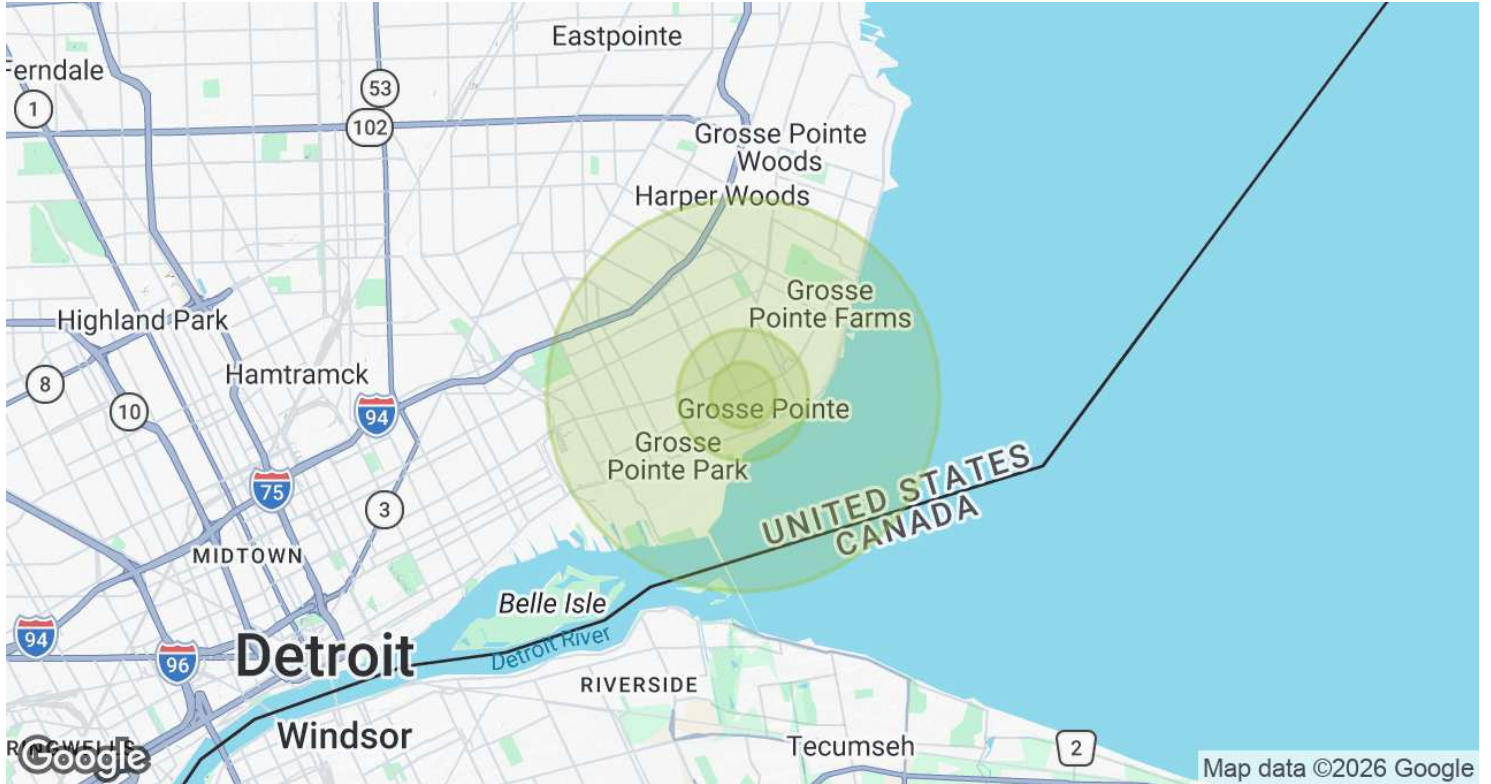
John E. De Wald, CPA PARTNER
D: 248.663.0504 | C: 313.510.3777
johnde@pacommercial.com

Phillip Myers SENIOR ASSOCIATE
D: 248.281.9904 | C: 586.242.4047
phil@pacommercial.com

We obtained the information above from sources we believe to be reliable. However, we have not verified its accuracy and make no guarantee, warranty or representation about it. It is submitted subject to the possibility of errors, omissions, change of price, rental or other conditions, prior sale, lease or financing, or withdrawal without notice. We include projections, opinions, assumptions or estimates for example only, and they may not represent current, past or future performance of the property. You and your tax and legal advisors should conduct your own investigation of the property and transaction.

16824 KERCHEVAL PLACE, GROSSE POINTE, MI 48230 // FOR LEASE

DEMOGRAPHICS MAP & REPORT



POPULATION	0.5 MILES	1 MILE	3 MILES
Total Population	3,605	15,629	87,163
Average Age	48.2	44.5	38.6
Average Age (Male)	45.4	43.0	36.3
Average Age (Female)	50.2	46.5	40.5
HOUSEHOLDS & INCOME	0.5 MILES	1 MILE	3 MILES
Total Households	1,486	6,198	33,192
# of Persons per HH	2.4	2.5	2.6
Average HH Income	\$190,319	\$174,629	\$113,389
Average House Value	\$440,811	\$430,042	\$286,497

2023 American Community Survey (ACS)

16824 KERCHEVAL PLACE, GROSSE POINTE, MI 48230 // FOR LEASE

CONTACT US



FOR MORE INFORMATION, PLEASE CONTACT:



John E. De Wald, CPA

PARTNER

D: 248.663.0504

C: 313.510.3777

johnd@pacommercial.com



Phillip Myers

SENIOR ASSOCIATE

D: 248.281.9904

C: 586.242.4047

phil@pacommercial.com

P.A. Commercial

26555 Evergreen Road, Suite 1500

Southfield, MI 48076

P: 248.358.0100

F: 248.358.5300

pacommercial.com

Follow Us!

