



3000 Center Green Drive

Suite 130, Boulder, CO

Angela Topel

angela@gibbonswhite.com
(303) 586-5921

Michael-Ryan McCarty

mccarty@gibbonswhite.com
(303) 586-5939

Patrick Weeks

patrick@gibbonswhite.com
(303) 586-5935

www.gibbonswhite.com



Property Info & Gallery



View Map

Gorgeous Boulder Office at Incredible Rate

Available Space	1,712 sq. ft.
Lease Rate / sq. ft.	\$15.00 NNN
Expenses / sq. ft.	\$13.22*

*Not Including Utilities

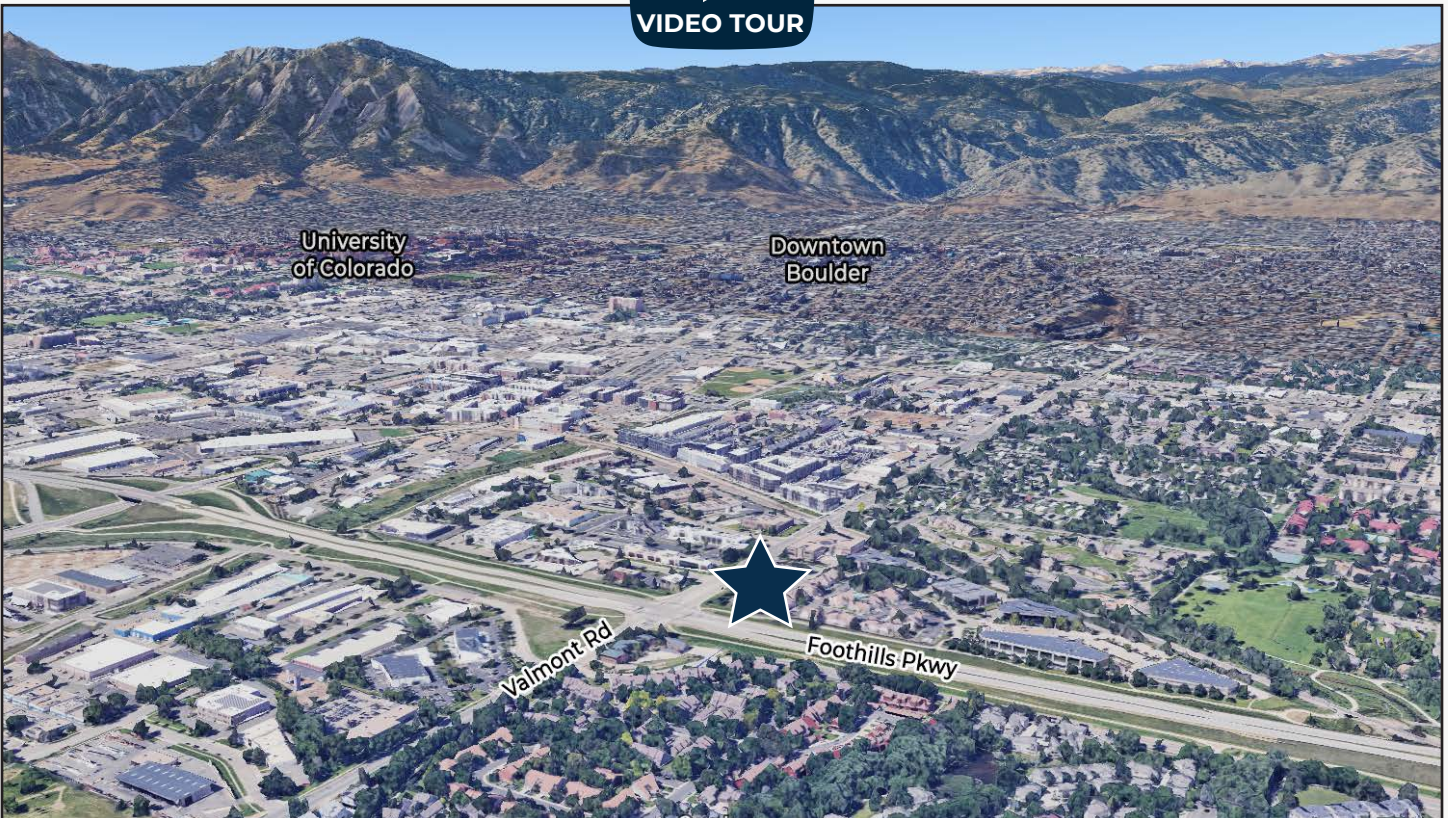
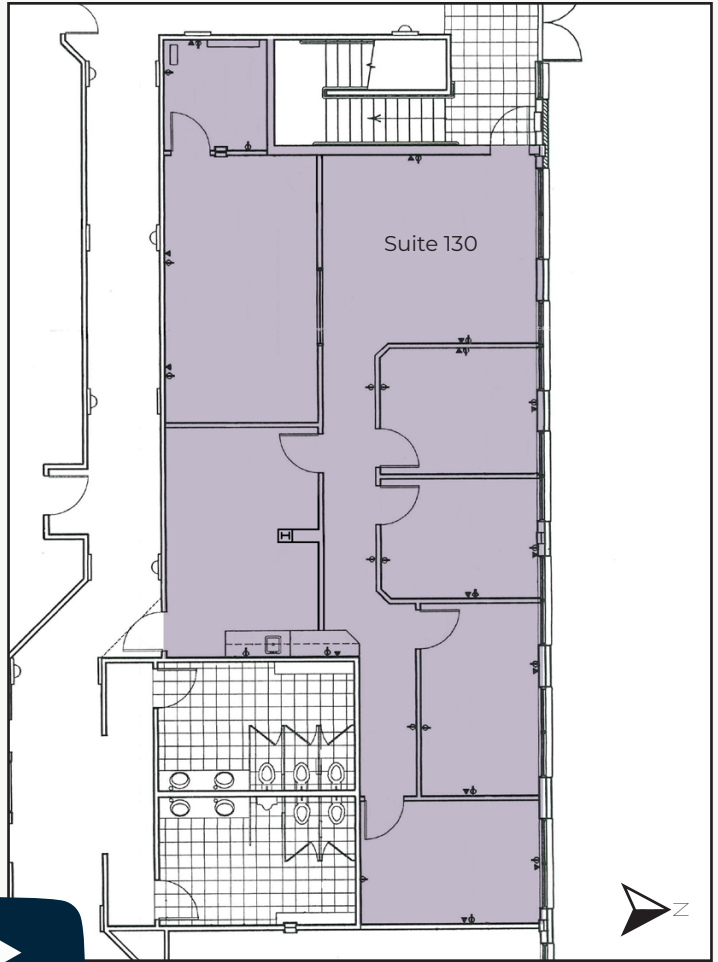
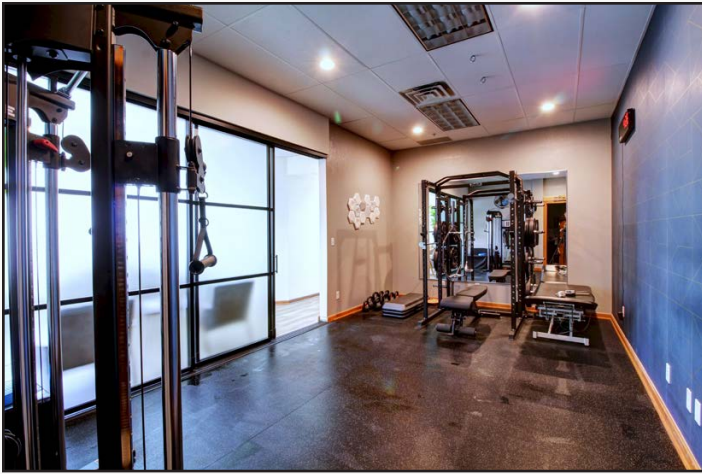
- Central Boulder Office Space with Beautiful Finishes at an Incredible Rate
- Ideal Suite for a Wide Range of Uses including Medical, Physical Therapy, Massage & Professional Office
- Conveniently Located Adjacent Foothills Parkway for Easy Access to US 36, Downtown Boulder & Longmont
- Sublease through March 31, 2025 with Longer Direct Term Available

The information included has been obtained from sources believed reliable. While we do not doubt the accuracy of the information, it has not been verified and no guarantee, warranty, or representation is being made.



2305 Canyon Blvd, Suite 200, Boulder, CO 80302 - (303) 442-1040

© 2024 Gibbons-White, Inc.



The information included has been obtained from sources believed reliable. While we do not doubt the accuracy of the information, it has not been verified and no guarantee, warranty, or representation is being made.