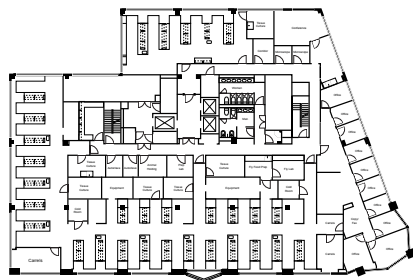
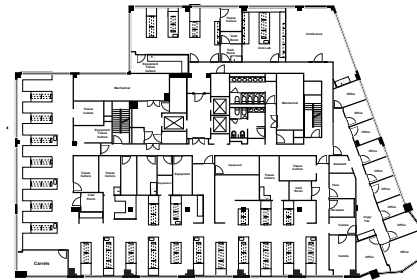


# WORLD-CLASS LAB & OFFICE AVAILABILITIES

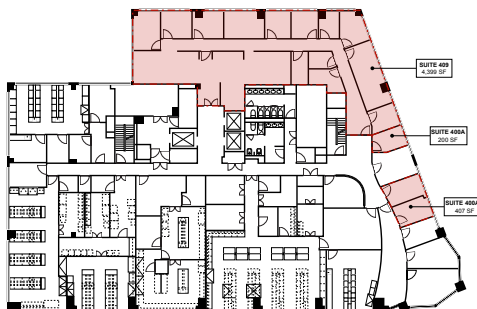
## 800 W BALTIMORE STREET | BUILDING ONE



**SECOND FLOOR**  
21,000 SF  
Available Now

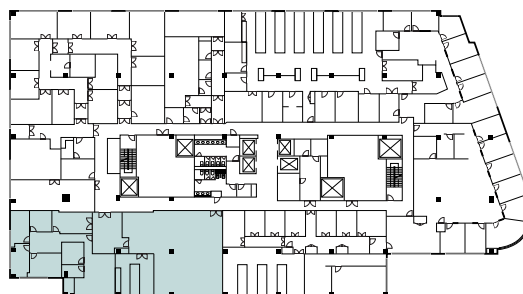


**THIRD FLOOR**  
21,000 SF  
Available Now

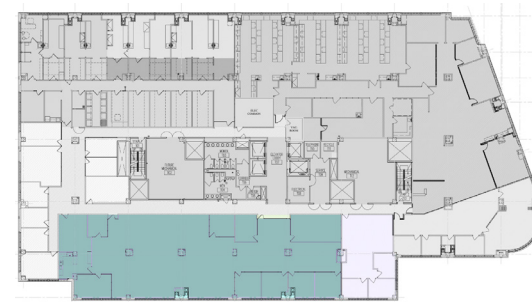


**FOURTH FLOOR**  
5,006 RSF Available Now  
15,291 RSF Available February 2026

## 801 W BALTIMORE STREET | BUILDING TWO



**SUITE 303**  
Suite 303 – 5,929 RSF Available Now



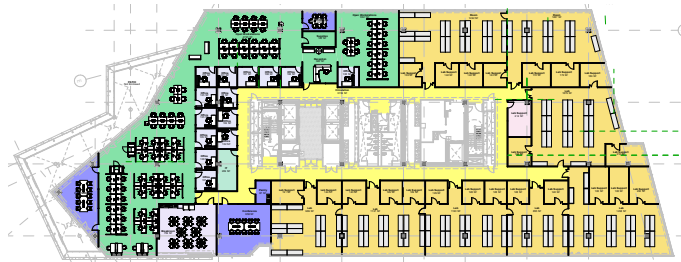
**SUITE 505**  
10,571 RSF Available October 2024

# WORLD-CLASS LAB & OFFICE AVAILABILITIES

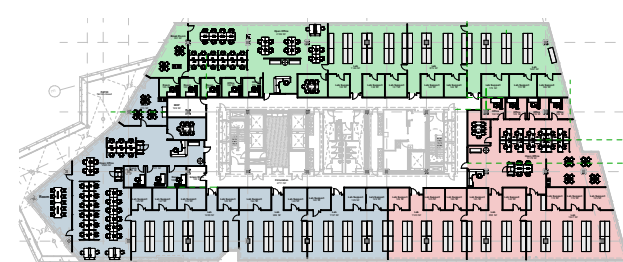
4 N MARTIN LUTHER KING JR BOULEVARD | 4MLK



SAMPLE SINGLE TENANT LAYOUT



SAMPLE MULTI-TENANT LAYOUT



9,400 – 165,220 RSF Available Now  
128,820 RSF Contiguous

## CONTACT

Frank Graybeal  
Executive Vice President  
+1 301 215 4114  
[Frank.Graybeal@cbre.com](mailto:Frank.Graybeal@cbre.com)

