

LEGEND OF SYMBOLS & ABBREVIATIONS

- | | | | |
|------|----------------------------|---|----------------------------|
| APN | Assessor parcel number | ↖ | Single wing catch basin |
| B5L | Building setback line | ⚡ | Fire department connection |
| CB | Catch basin | ⚡ | Electric meter |
| CLF | Chain link fence | ⚡ | Electric box |
| CMP | Corrugated metal pipe | ⚡ | Nail found |
| CONC | Concrete | ⚡ | Water vault |
| CRBF | Capped rebar found | ⚡ | Traffic pole |
| DB | Deed book | ⚡ | Traffic box |
| DI | Drain inlet | ♿ | Handicap (hc) |
| ESMT | Easement | ⚡ | Weir |
| FDC | Fire department connection | ⚡ | Cable box |
| L.L. | Land lot | ⚡ | Clean out |
| LS | Landscaping | ⚡ | Bollard |
| M | Measured | ⚡ | Sign |
| N/F | Now or formerly | ⚡ | Irrigation control valve |
| PG | Page | ⚡ | Gas meter |
| POB | Point of Beginning | ⚡ | Sanitary sewer manhole |
| POC | Point of Commencement | ⚡ | Telephone manhole |
| R | Recorded | ⚡ | Fire hydrant |
| R/W | Right of way | ⚡ | Water valve |
| RBF | Rebar found | ⚡ | Water meter |
| SF | Square feet | ⚡ | Guy wire |
| SW | Sidewalk | ⚡ | Telephone pedestal |
| SWK | Sidewalk | ⚡ | Light pole |
| T | Transformer | ⚡ | Power pole |
| TYP | Typical | ⚡ | Drop inlet |
| WF | Wood fence | ⚡ | Double wing catch basin |
| WV | Water valve | ⚡ | Single wing catch basin |
| ① | Parking spaces | ⚡ | Iron pin found |
| Ⓢ | Nail set | ⚡ | Concrete monument found |
| Ⓢ | Capped 1/2" rebar set | ⚡ | Building overhang/canopy |
| Ⓢ | | ⚡ | Chain link fence |
| Ⓢ | | ⚡ | Steel fence |
| Ⓢ | | ⚡ | Wire fence |
| Ⓢ | | ⚡ | Wood fence |
| Ⓢ | | ⚡ | Overhead power line |
| Ⓢ | | ⚡ | Adjoining property line |
| Ⓢ | | ⚡ | Land lot line |
| Ⓢ | | ⚡ | Parcel |
| Ⓢ | | ⚡ | Right-of-way |
| Ⓢ | | ⚡ | Building setback line |
| Ⓢ | | ⚡ | Easement |

As-Surveyed Description

All that tract or parcel of land lying and being in Land Lots 83 and 110 of the 12th District of Clayton County, Georgia and being more particularly described as follows:

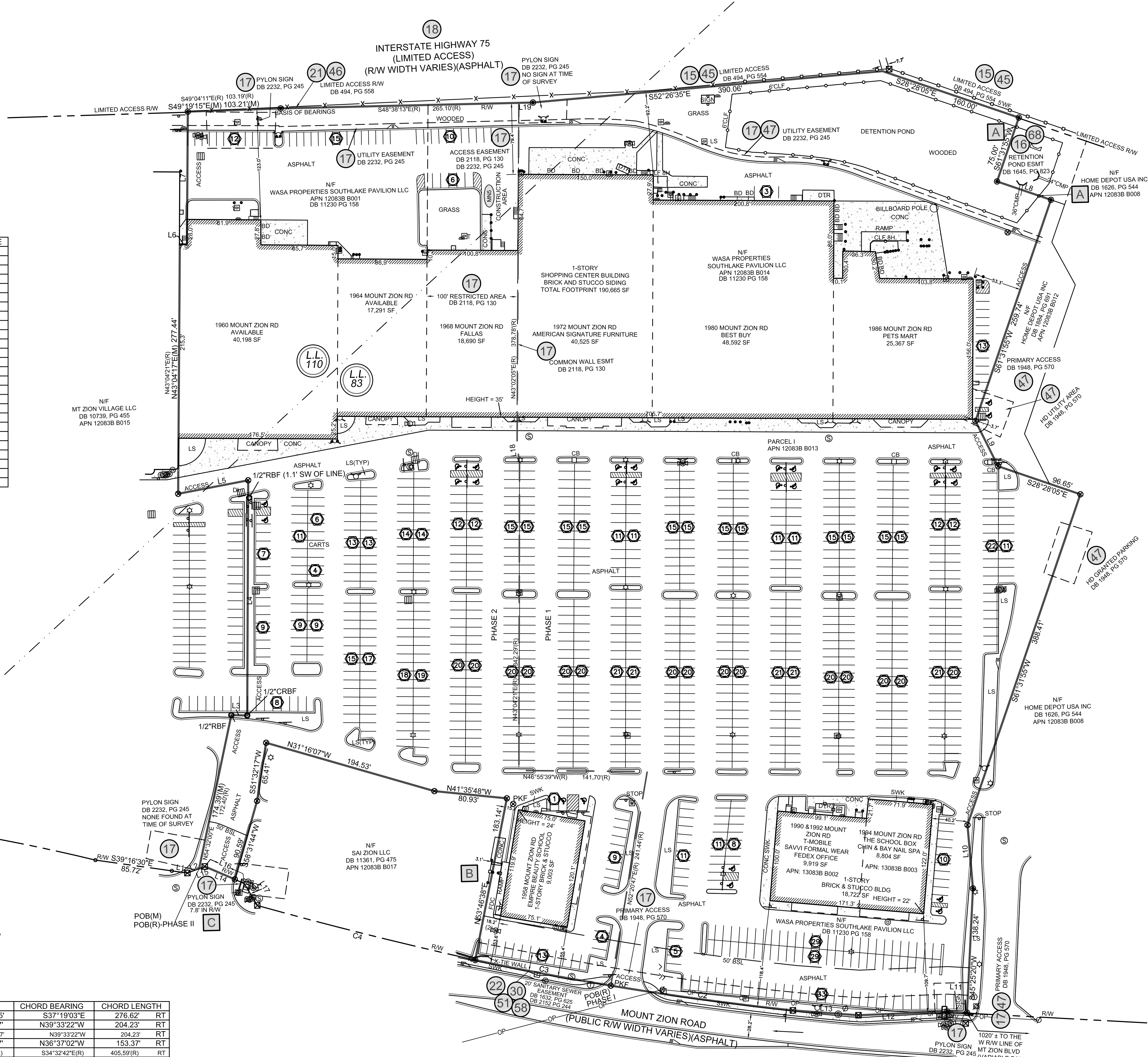
To find The True Point of Beginning, commence at a point on the intersection of the land lot line common to Land Lots 83 and 110, aforesaid District and County, with the northeasterly right-of-way line of Mount Zion Road (having a variable right-of-way width); thence, following aforesaid right-of-way line for the next 4 courses and distances, proceed along a curve to the right having a radius of 2170.95 feet and an arc length of 276.81 feet, said arc being subtended by a chord with a bearing of South 37 degrees 19 minutes 03 seconds East and a length of 276.82 feet, to a point; thence South 39 degrees 16 minutes 30 seconds East for a distance of 85.72 feet to a point; thence South 39 degrees 16 minutes 30 seconds East for a distance of 17.44 feet to a concrete right-of-way monument found; thence South 68 degrees 01 minute 10 seconds East for a distance of 13.97 feet to a point and The True Point of Beginning.

From The True Point of Beginning, as thus established, leaving said right-of-way, proceed North 54 degrees 32 minutes 00 seconds East for a distance of 174.39 feet to a 1/2-inch rebar found; thence South 45 degrees 52 minutes 14 seconds East for a distance of 17.67 feet to a capped 1/2-inch rebar found; thence North 42 degrees 55 minutes 53 seconds East for a distance of 261.42 feet to a magnetic nail found; thence North 58 degrees 12 minutes 08 seconds West for a distance of 79.24 feet to a magnetic nail found; thence North 43 degrees 04 minutes 17 seconds East for a distance of 277.44 feet to a point; thence South 46 degrees 55 minutes 39 seconds East for a distance of 7.52 feet to a point; thence North 43 degrees 04 minutes 21 seconds East for a distance of 147.38 feet to a capped 1/2-inch rebar set on the southwesterly right-of-way line of Interstate Highway 75; thence, following said right-of-way line for the next 4 courses and distances, proceed South 49 degrees 19 minutes 15 seconds East for a distance of 103.21 feet to a capped 1/2-inch rebar set; thence South 28 degrees 28 minutes 05 seconds East for a distance of 280.40 feet to a capped 1/2-inch rebar set; thence South 52 degrees 26 minutes 35 seconds East for a distance of 390.06 feet to a point being 7.7' in the northeasterly direction from a concrete monument found; thence South 28 degrees 28 minutes 05 seconds East for a distance of 160.00 feet to a capped 1/2-inch rebar set; thence, leaving said right-of-way, proceed South 61 degrees 31 minutes 55 seconds West for a distance of 75.00 feet to a capped 1/2-inch rebar set; thence South 28 degrees 28 minutes 05 seconds East for a distance of 63.28 feet to a capped 1/2-inch rebar set; thence South 61 degrees 31 minutes 55 seconds West for a distance of 259.74 feet to a PK nail set in concrete; thence South 16 degrees 10 minutes 18 seconds West for a distance of 56.21 feet to a PK nail set in concrete; thence South 28 degrees 28 minutes 05 seconds East for a distance of 96.65 feet to a PK nail set in asphalt; thence South 61 degrees 31 minutes 55 seconds West for a distance of 388.41 feet to a PK nail set in asphalt; thence South 37 degrees 47 minutes 44 seconds West for a distance of 70.78 feet to a capped 1/2-inch rebar set; thence South 45 degrees 25 minutes 20 seconds West for a distance of 138.24 feet to a capped 1/2-inch rebar set on the northeasterly right-of-way line of Mount Zion Road; thence, following said right-of-way line for the next 5 courses and distances, proceed North 4 degrees 13 minutes 48 seconds West for a distance of 22.00 feet to a capped 1/2-inch rebar set; thence North 49 degrees 38 minutes 18 seconds West for a distance of 98.72 feet to a concrete monument found; thence North 43 degrees 06 minutes 13 seconds West for a distance of 73.02 feet to a concrete monument found; thence along a curve to the right having a radius of 3487.77 feet and an arc length of 204.26 feet, said arc being subtended by a chord with a bearing of North 39 degrees 33 minutes 22 seconds West and a length of 204.23 feet, to a PK nail set in concrete; thence along a curve to the right having a radius of 3487.77 feet and an arc length of 153.38 feet, said arc being subtended by a chord with a bearing of North 36 degrees 37 minutes 02 seconds West and a length of 153.37 feet, to a capped 1/2-inch rebar set; thence, leaving said right-of-way, proceed North 53 degrees 46 minutes 38 seconds East for a distance of 183.14 feet to a PK nail set in asphalt; thence North 41 degrees 48 seconds West for a distance of 80.83 feet to a PK nail set in asphalt; thence North 31 degrees 16 minutes 07 seconds West for a distance of 194.53 feet to a PK nail set in asphalt; thence South 51 degrees 32 minutes 17 seconds West for a distance of 65.41 feet to a PK nail set in asphalt; thence South 58 degrees 31 minutes 44 seconds West for a distance of 90.59 feet to a PK nail set in concrete; thence North 24 degrees 07 minutes 41 seconds West for a distance of 36.28 feet to a concrete monument found; thence North 68 degrees 01 minute 10 seconds West for a distance of 6.76 feet to a point and The True Point of Beginning.

Containing within said bounds 18,779 acres (818,019 square feet) more or less.
 THE LANDS SURVEYED, SHOWN AND DESCRIBED HEREON ARE THE SAME LANDS AS DESCRIBED IN THE TITLE COMMITMENT PROVIDED BY FIDELITY NATIONAL TITLE INSURANCE COMPANY, COMMITMENT NO. 192031GA, DATED September 5, 2019 at 12:00 AM.

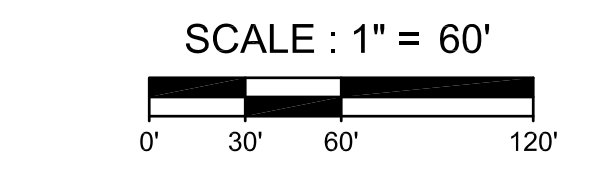
ALTA/NSPS LAND TITLE SURVEY
 PREPARED FOR
Southlake Pavilion Update
 DATE OF FIELD SURVEY: Sept. 26, 2019
 NETWORK PROJECT NUMBER: 201904602_001
1-(800)-SURVEYS (787-8397)
 TRANSACTION SERVICES
 www.bockandclark.com mayhelpyou@bockandclark.com www.nv5.com

SURVEY • ZONING • ENVIRONMENTAL • ASSESSMENT



LINE TABLE

LINE	BEARING	DISTANCE
L1	S39°16'30"E	17.44'
L2	S68°01'10"E(M)	13.97'(M)
L3	S73°04'16"E(R)	14.33'(R)
L4	S45°52'14"E	17.67'
L5	S48°55'39"E(R)	17.58'(R)
L6	N42°55'53"E	261.42'
L7	N43°04'21"E(R)	261.13'(R)
L8	N58°12'08"W	79.24'
L9	N58°03'39"W(R)	79.32'(R)
L10	S46°55'39"E	7.92'
L11	N43°04'21"E	147.38'
L12	S28°28'05"E	63.26'
L13	S16°10'18"W	56.21'
L14	S37°47'44"W	70.78'
L15	N44°13'48"W	22.00'
L16	N49°38'18"W	98.72'
L17	N43°06'13"W(M)	73.02'(M)
L18	N42°37'05"W(R)	73.05'(R)
L19	N24°07'41"W(M)	36.28'(M)
L20	N24°51'56"W(R)	38.87'(R)
L21	N68°01'10"W(M)	6.76'(M)
L22	S73°04'16"E(R)	4.23'(R)
L23	N24°51'56"E(R)	50.34'(R)
L24	S17°05'34"W(R)	26.85'(R)
L25	N28°41'15"E(R)	21.28'(R)
L26	S48°38'13"E(R)	15.30'(R)



CURVE TABLE

CURVE	ARC LENGTH	RADIUS	CHORD BEARING	CHORD LENGTH
C1	276.81'	2170.95'	S37°19'03"E	276.82' RT
C2	204.26'	3487.77'	N39°33'22"W	204.23' RT
C3	153.38'	3487.77'	N36°37'02"W	153.37' RT
C4	405.82'(R)	3487.77'(R)	S34°32'42"E(R)	405.59'(R) RT