

**±7,187 SF
FOR LEASE**

11 GODDARD, IRVINE



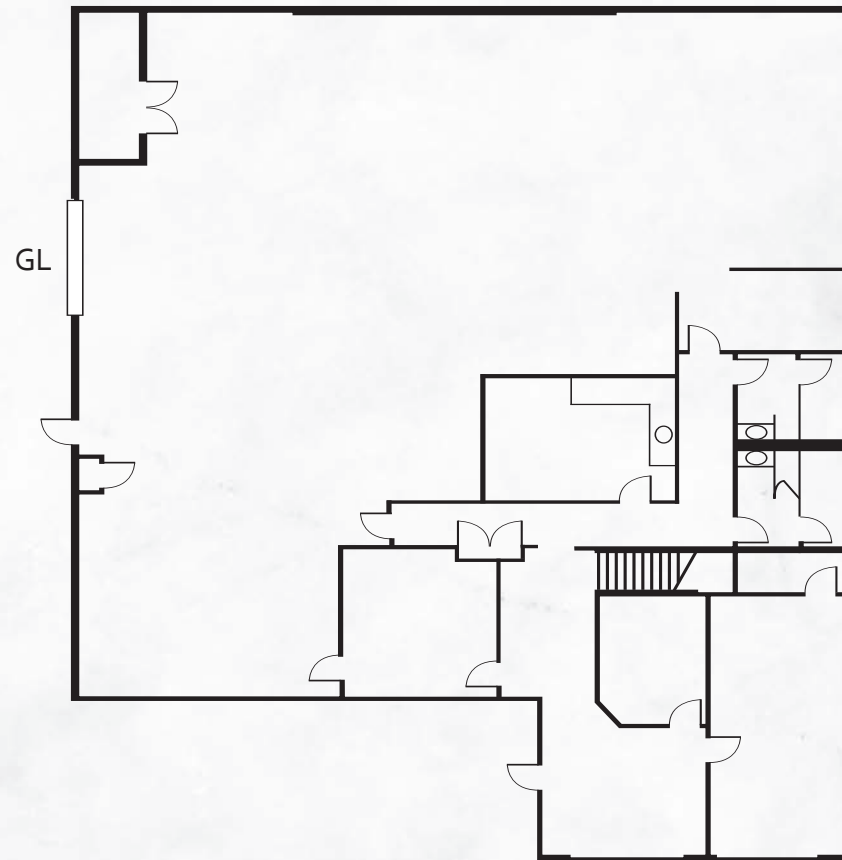
CBRE

PROPERTY HIGHLIGHTS

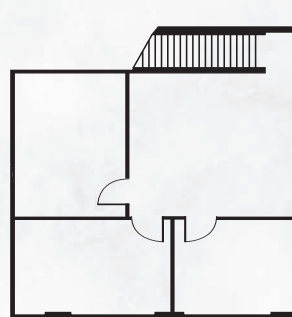
- » ±7,187 SF Industrial Building
- » ±2,000 SF of High End Office Space
- » ±20 Foot Warehouse Clearance
- » 400 Amps of 208/120 Volt Power
- » Professional Business Park
- » 2.8:1,000 Parking Ratio
- » One (1) Ground Level Loading Door
- » Fully Sprinklered
- » Prime Irvine Spectrum Location
- » Excellent access to the 5, 405 and 133 Freeways



FIRST FLOOR



SECOND FLOOR



FLOOR PLAN

For more information, please contact:

CBRE

BRIAN COLE

Senior Vice President

Lic. 01770986

T +1 949 725 8610

brian.cole@cbre.com

JONATHAN CARR

Associate

Lic. 0227785

T +1 949 725 8418

jonathan.carr@cbre.com

11 GODDARD, IRVINE | ±7,187 SF FOR LEASE

© 2025 CBRE, Inc. All rights reserved. This information has been obtained from sources believed reliable, but has not been verified for accuracy or completeness. You should conduct a careful, independent investigation of the property and verify all information. Any reliance on this information is solely at your own risk. CBRE and the CBRE logo are service marks of CBRE, Inc. All other marks displayed on this document are the property of their respective owners, and the use of such logos does not imply any affiliation with or endorsement of CBRE.