



## AVAILABLE FOR LEASE

±300 SF - ±315 SF OFFICE SPACES

2001 OMEGA ROAD , SAN RAMON, CA 94583

LOCAL EXPERTISE. INTERNATIONAL REACH. WORLD CLASS.

Mark Rinkle

Principal  
mrinkle@lee-associates.com  
925-737-4145  
LIC NO 01512632

Mike Smith

Principal  
mikesmith1@lee-associates.com  
925-737-4151  
LIC NO 00837386

Kirsten Johnsen

Associate  
kjohnsen@lee-associates.com  
925-519-7818  
LIC NO 02133540



5

PROPERTY HIGHLIGHTS



Office Building  
 Suite 207: ±315 SF  
 Suite 210: ±300 SF  
 Available immediately  
 Operable windows  
 Signage opportunity

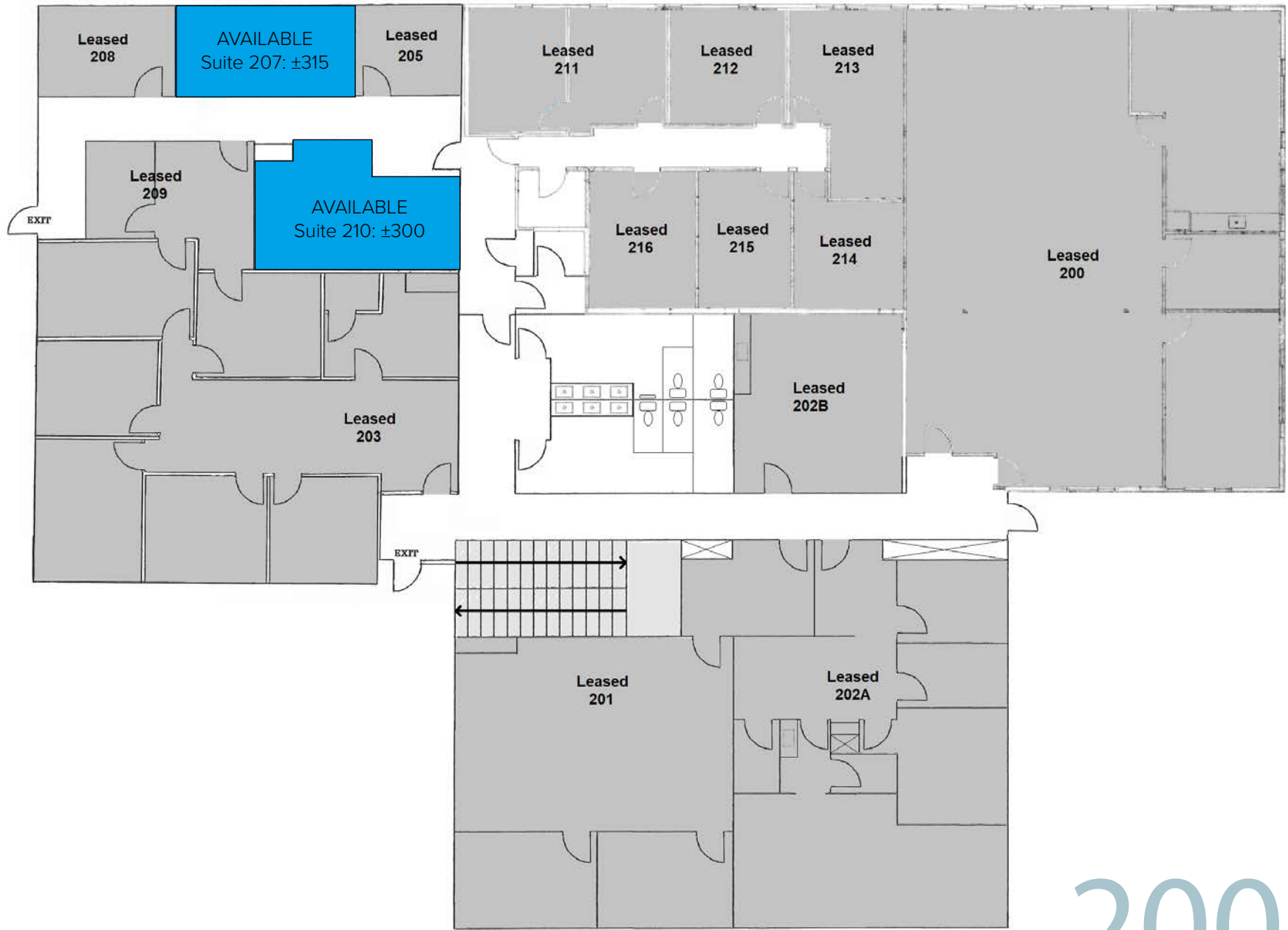
SUITE 207 - VIRTUAL TOUR  
 SUITE 210 - VIRTUAL TOUR



Some individually controlled HVAC units  
 Great views of surrounding hillside  
 Parking with some covered spaces  
 Excellent freeway access  
 Lease rate:  
 Please refer to Floor Plan

2001  
 OMEGA ROAD

Suite 207: ±315 SF - \$900/month full service  
Suite 210: ±300 SF - \$845/month full service



SITE PLAN

2001  
OMEGA ROAD

# FOR LEASE

±300 SF - ±315 SF OFFICE SPACES AVAILABLE

2001 OMEGA ROAD | SAN RAMON, CA 94583



**Mark Rinkle**

Principal  
mrinkle@lee-associates.com  
925-737-4145  
LIC NO 01512632



**Mike Smith**

Principal  
mikesmith1@lee-associates.com  
925-737-4151  
LIC NO 00837386



**Kirsten Johnsen**

Associate  
kjohnsen@lee-associates.com  
925-519-7818  
LIC NO 02133540

All information furnished regarding property for sale, rental or financing is from sources deemed reliable, but no warranty or representation is made to the accuracy thereof and same is submitted to errors, omissions, change of price, rental or other conditions prior to sale, lease or financing or withdrawal without notice. No liability of any kind is to be imposed on the broker herein.

Lee & Associates® East Bay, Inc. Corp. ID 01194869 5000 Pleasanton Ave, Suite 220, Pleasanton, CA 94566

LEE-ASSOCIATES.COM

**2001**  
**OMEGA ROAD**